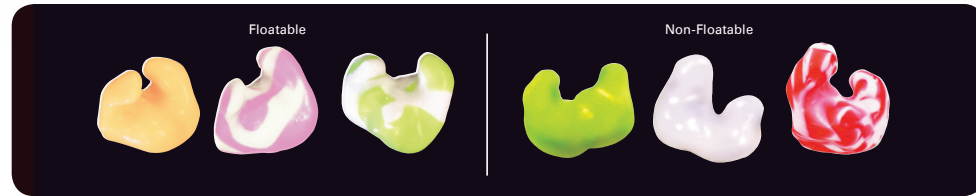


ADDITIONAL MOLDS

SWIM MOLDS

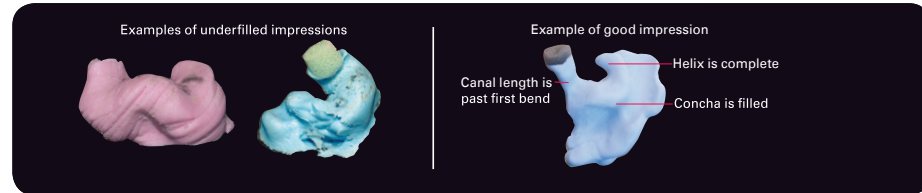
- Made of New-Sil material to provide best sealing qualities to keep most water out
- Swim molds are not guaranteed to be 100% leak proof
- Can be made floatable and non-floatable
- Can be made in a variety of colours
- Come with handles and string as standard option
- Floatable molds are a pastel colour only



IMPRESSIONS

Tips for making a good impression

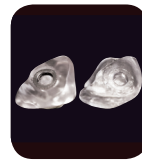
- Use good quality impression material
- Make sure the impression material is mixed properly
- Make sure the entire concha is filled regardless of style being ordered
- Make sure there is good length to the canal
- Do not press on the impression material after filling the ear or while it is drying
- Check the impression to see if the patient's ear will accommodate the earmold/hearing aid you are asking for
- The earmold will only be as good as the impression it is made from



COMMUNICATION EARMOLDS

Tips for making a good impression

- Can be used for Body Aids, and Assistive Listening Devices (ALDs)
- Other uses include custom earmolds for pilots, anesthetise, police communicators, etc.



#1 Receiver



Audio Receiver Mold



Pilot Mold Adapter



Tubing Adapters



Listening Mold

- #2 Skeleton earmold made of Acrylic
- At the end of the #13 tubing is a #420A listening cup which fits over the earmold, hearing aid, or whatever you wish to monitor.
- Excellent choice for audiologists, hearing aid specialists, lab technicians, school teachers and others

TUBING OPTIONS



#13 Tubing

Available in regular, heavy wall and super heavy wall thicknesses. (Standard is #13HW).



Gold Tube Lock System

A tubing system that uses a brass retention ring to hold the tube in position in the earpiece. Designed for soft materials. Not recommended for silicone.



Dri Tube

Specially formulated tube helps prevent moisture buildup caused by humidity or perspiration. Available in #13 and #13HW.



Plastic Tube Lock System

A tubing system that uses an acrylic retention ring to hold the tube in position in the earpiece. Designed for all soft materials. Easily replaced without damage to silicone.



Horn Tubing

Uses the horn effect to increase gain in the high frequency region. Available in 3 mm and 4 mm diameter.



Pediatric Tube System

System uses a #16 tube glued into a #13 tube which is held place with a plastic tube lock. System is acoustically invisible. Ideal for fitting small, narrow canals where the tubing must go to the end of the sound bore. Available in Silicone and New-Sil only.

At Bernafon we know that every ear is unique. We are passionate about superior performance, superior comfort and superior fit. Bernafon earmolds and you: *the perfect fit.*

BERNAFON CUSTOM EARMOLDS

by *Earmold Design*

Making Quality Handcrafted Earmolds for Over 35 Years

Bernafon Canada Ltd.
PH 519 748 6669
TF 1 800 265 8250
FX 1 888 748 9158

www.bernafon.ca

bernafon[®]
Your hearing • Our passion

CUSTOM EARMOLDS FOR HEARING AIDS



#1 Special

- Fills the entire ear
- Material is thick and not sculpted
- Can be made from all available materials
- Designed for severe to profound losses
- Good for individuals who require an optimal acoustic seal due to severity of their loss and the power required from their hearing aids



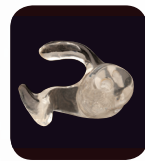
#2 Skeleton

- Fills entire ear for retention with centre section removed to make it lighter in weight for comfort
- Can be made from all available materials
- Can be vented
- Designed for mild to severe hearing losses
- Good for a wide range of applications
- Good for dexterity issues



#3 Full Shell

- Fills the entire ear but is slightly sculpted
- Designed for moderate to severe hearing losses
- Can be made from all available materials
- Can be ordered thick with less sculpting
- Can be vented
- Can be made with a helix lock for better retention
- Good for children and more severe profound losses



#4 Half-Skelton

- Solid canal portion with helix and tail in lower portion of the concha rim
- Can be made from all available materials
- Can be vented
- Designed for mild to severe hearing losses
- Good for individuals who do not require full retention and/or have a convex ear bowl
- Good for dexterity issues



#5 1/4 Skeleton (Canal Lock)

- Solid canal portion with a small tail in the lower portion of the concha rim for retention
- Can be made from all available material
- Can be vented
- Designed for mild to severe hearing losses
- Good for individuals who do not require full retention
- Good for dexterity issues



Half-Shell

- Solid material that fills half the concha bowl
- Can be made from all available materials
- Can be vented
- Designed for mild to severe hearing losses
- Good option for individuals with helix problems
- Good for dexterity issues



Canal

- Solid canal portion
- Can be made from all available material
- Can be vented
- Designed for mild to severe hearing losses
- Not good for individuals with small, narrow or short ear canals



RITE Earmolds

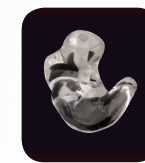
- Earmolds made specifically for receiver in the ear products
- Can be made in the following styles: Mini Canal, Micromold, Powermold, Lite Tip, Canal, Skeleton, Shell T, 1/2 Skeleton, Canal Lock and 1/2 Shell
- Can be made from the following materials: Lucite, New-Sil, Formaseal, Silicone and Shor 70
- Mold style will be determined by receiver type
- Can be vented
- Designed for mild to severe hearing losses
- Good option for individuals who have retention or fit issues with instant fit dome solutions



SpiraFlex (Thin Tube) Earmolds

- Earmolds made specifically for Slim Tubes
- Can be made in the following styles: Mini Canal, Canal, Skeleton, Shell T, 1/2 Skeleton, Canal Lock, 1/2 Shell
- Can be made from the following material: Lucite, New-Sil, Formaseal, Silicone and Shor 70
- Can be vented
- Designed for mild to moderate hearing losses
- Good option for individuals who have retention or fit issues with instant fit dome solutions

MATERIAL CHARACTERISTICS



Lucite

- Acrylic material
- Produces a hard-texture earmold
- High durability
- Good for acoustic and fit modifications
- No shrinkage
- Not hypoallergenic
- Standard colour is tinted pink but can be coloured or clear
- Use cement to adhere tubing
- Easy to modify in office



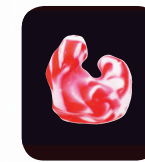
Heat-Cured Lucite

- Lucite material that is heat cured
- Same properties as lucite
- Reduced chance of allergic reactions
- Standard colour is clear and can be tinted pink but not coloured
- Use cement to adhere tubing



Formaseal

- PVC material
- Produces a soft textured mold
- High durability
- Some shrinkage
- Not hypoallergenic
- Standard colour has pinkish tinge but can be tinted
- Colours will look like stained glass
- Can use cement to adhere tubing or can use metal tube locks



New-Sil

- High grade silicone
- Produces the softest textured earmold
- Moderate durability
- No shrinkage
- Reduced chance of allergy when made in translucent clear
- Standard colour is translucent but can be coloured or made in flesh tint
- Tubing cannot be glued but must be friction fit with plastic or gold tube locks
- Moderately difficult to modify in office due to softness



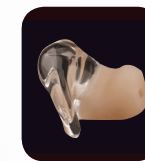
Polyethylene

- Plastic material
- Produces a semi rigid mold with a wax-like texture
- Moderate durability
- No shrinkage
- Our most hypoallergenic mold
- Standard colour is an opaque white. Cannot be coloured and does not stain.
- Tubing is friction fit using a push/pull elbow



Silicone

- Medical grade material
- Produces a soft textured earmold
- High durability
- No shrinkage
- Standard colour is opaque pink tint. Cannot be coloured
- Tubing cannot be glued but is friction fit with tube locks
- Difficult to modify in office due to softness



Flex Canal

- Combination of heat cured lucite and silicone (canal)
- Produces an earmold with a hard textured concha and soft textured canal
- High durability
- No shrinkage
- Low allergy
- Standard colour is transparent pink with flesh coloured canal. Cannot be coloured
- Use cement to adhere tubing to the lucite portion

ACCOUSTICALLY TUNED MOLDS

- Various shapes but are intended to be an open fit mold
- Designed for CROS/BICROS and high frequency hearing loss applications
- Recommended material for these molds is Lucite
- **Can be used with regular tubes and slim tubes**



2HF



IROS Mold



2HF with Bridge



Free Field



2HF with Extension

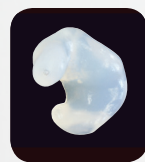


Sound Separator/
Sound Separator
Extended



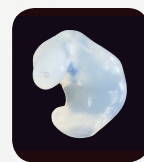
2HF with Bridge
and Extension

CUSTOM HEARING PROTECTION



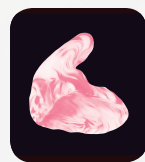
Sentinel

- NRR 26 (Class A, AL)
- Full concha earmold style
- New-Sil is recommended material although can also be made from Formaseal, Acrylic or Silicone
- Choice of colours
- Can be made with handles and cords (not standard)
- Intended for industry and recreation



Noisebraker

- NRR 20 (Class B)
- Full concha earmold style containing Noise Reduction filter
- New-Sil is recommended although can also be made from Formaseal, or Silicone



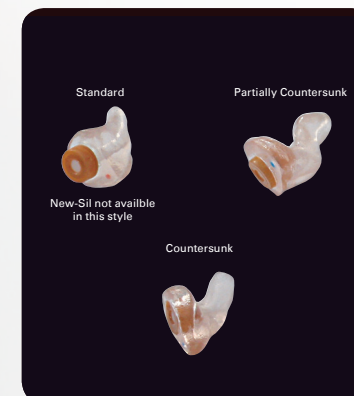
Sleep Plugs

- Half shell style ear mold which is underfilled to provide a more comfortable fit while sleeping
- Can have Noisebraker filter added
- Will not provide significant attenuation.
- Designed to remove the "sharpness" of sounds while keeping the user connected to their environment
- New-Sil is recommended although can also be made from Formaseal, or Silicone

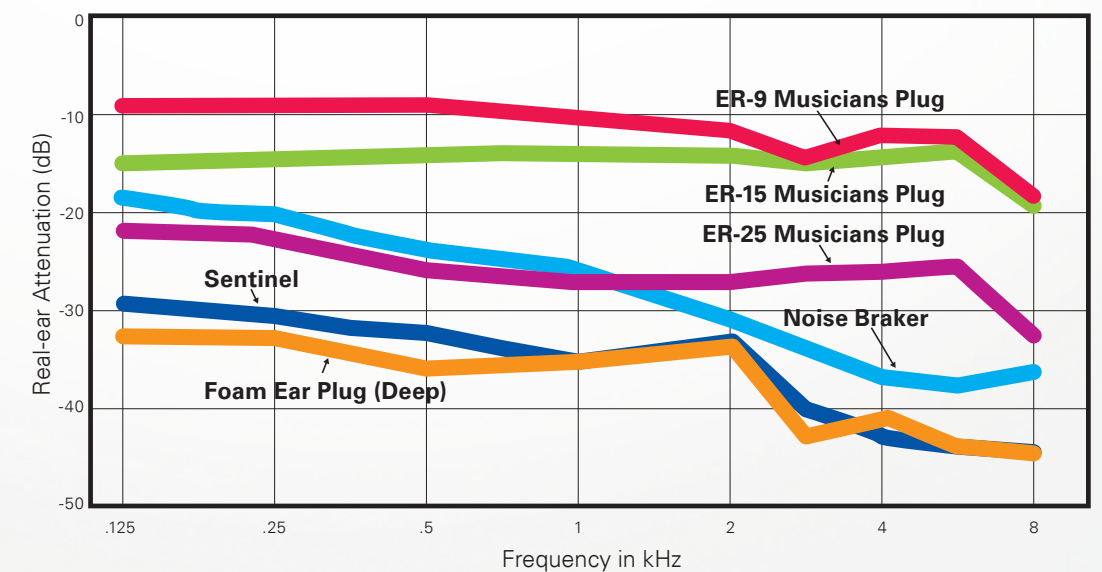
MUSICIAN PLUGS

ER-9, ER-15, ER-25

- NRR 9, 15 and 25
- Standard style is a Formaseal canal mold with the filter snapping into a vinyl ring
- Can also be countersunk and partially countersunk
- Flat response with attenuation for environments not over 105 dB
- Formaseal is most commonly used although New-Sil or Silicone can also be used
- The standard filter colour is beige but clear, red, blue, brown and clear solid filters are available upon request



Earplug Attenuation



*NRR Ratings: please note that Noise Reduction Ratings are based on maximum attenuation values. Earmold fit and improper insertion will reduce these values. To determine exact ear specific attenuation levels, real ear measurements are recommended.