

THE NATURAL CHOICE FOR POWER AND PERFORMANCE



JUNA 9 | 7
SAPHIRA 5 | 3
NEVARA 1

POWER BTE

bernafon[®]
Your hearing · Our passion

The Power and Potential You Need

The all-new Power BTE (or P BTE) is another great reason to choose Bernafon hearing instruments. Powerful, robust, and modern are just a few attributes to describe it. The P BTE is now available in Bernafon's newest hearing aid families, Juna 9|7, Saphira 5|3, and Nevara 1. Unlock the full power and potential of Swiss-engineered technology with this new Bernafon hearing instrument.

The P BTE is for your clients who need that extra power in their life. It is also for your clients who attach importance to robust and reliable Swiss technology. Moreover, it is for your clients who have a good sense of contemporary design. And it is for you, who works diligently for a successful fitting.

The Performance and Design You Expect




With a peak MPO of 138 dB SPL, this hearing instrument is ideal for your clients with moderate to severe hearing losses of up to 100 dB HL.

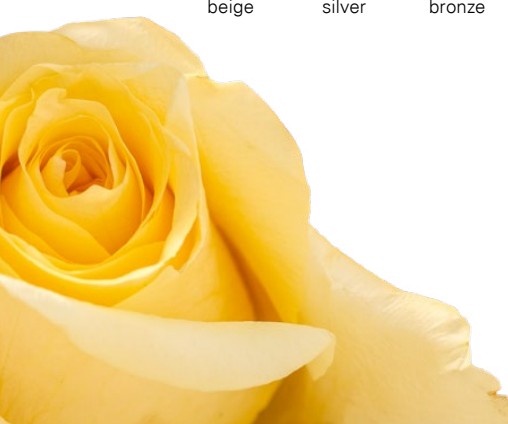


P BTE with Bernafon's S-shape design

Following the Bernafon S-shape design, the P BTE comes in the ergonomic form of a human ear. This makes it extremely comfortable to wear. It is also built to go the distance together with your clients. All key components are hydrophobic coated to repel liquid and provide a high degree of protection against dust and moisture.

The P BTE is available in nine attractive color combinations. There are discreet as well as more prominent colors to choose from, to appeal to lots of different clients and their individual preferences.

BASE SHELL MAC (METALLIC ANTHRACITE)				BASE SHELL MSIL (METALLIC SILVER)				
								
SABE	MSIL	ANBR	MAC	SABE	MAC	COBR	JEBL	COBU
sand beige	metallic silver	antique bronze	metallic anthracite	sand beige	metallic anthracite	cocoa brown	jet black	cobalt blue



The Ideal Fit You Envisage

Achieve the ideal fit with the miniFit system. It is a reliable, versatile, and flexible system that is also used for the Pico RITE. For the P BTE, use the standard earhook or select from the range of miniFit thin tubes, domes, and custom molds.

miniFit

	THIN TUBE 0.9	THIN TUBE 1.3
INSTANT FIT		
Open Dome (6, 8, 10 mm)	●	●
Bass Dome, Double Vent (6, 8, 10, 12 mm)	●	●
Bass Dome, Single Vent (6, 8, 10, 12 mm)	●	●
Power Dome (6, 8, 10, 12 mm)	●	●
CUSTOM FIT		
Micro Mold	●	●
Lite Tip	●	●

The miniFit domes are made out of silicon and provide a high retention force on the thin tube and in the ear. Silicon also helps to prolong the durability of the domes. The discreet Micro Mold and Lite Tip custom molds are now available for this powerful BTE.

A dedicated miniFit Thin Tube Kit including tubes, domes, and tools is available for easier storage and handling.

For a convenient fitting session, you can use FittingLINK. Your clients simply wear the FittingLINK device around their neck and the connection to their new hearing instrument(s) starts. This allows you to program the hearing instrument(s) without the need for additional programming cables.



A Super-Strong Portfolio for You

Bernafon's product offer has never been as strong and as versatile as it is today. With the introduction of the Power BTE, you can choose from a complete range of BTE, RITE, and custom hearing instrument models.

Suggest our premium Juna hearing instruments featuring state-of-the-art technology to your most demanding clientele. Or try Saphira, our mid-range product family including many top-end features and a full set of options for wireless connectivity. Or consider Nevara, Bernafon's latest basic hearing instrument family for those who simply want to hear better. The new P BTE is available in them all.



Manufacturer:
Bernafon AG
Morgenstrasse 131
3018 Bern
www.bernafon.com

Local Manufacturer and Distributor:
Bernafon Canada
500 Trillium Drive, Unit 15
Kitchener, Ontario
Canada N2R 1A7
www.bernafon.ca

For more information, check out our Product Selector on the Bernafon website.

bernafon
Your hearing • Our passion