

ECKEL

NOISE CONTROL TECHNOLOGIES

Audiology Series
Spec Sheets
2019
www.audiologyrooms.com

**Audiology Booths
Rooms & Suites**

Clinical &
Diagnostic
Practice



**Going
Strong
65+**

Eckel Booths, Rooms & Suites
a Foundation of the Audiology
Industry For 65+ Years

**Standard
& Custom
Engineered
Solutions**

Audiology Suites & Multi-Stations

Toll-free 1-800-563-3574 | International +1-613-543-2967 | www.audiologyrooms.com
ISO 9001:2015 and ISO 14001:2015

“ Due to High Traffic Corridors
Many Hospitals Insist on
Double Wall Examination
Rooms...

Noise Control

Never looked so good.
Best-in-class Eckel
Audiometric Rooms &
Suites are the first
choice of Audiologists.

Audiology Work Spaces

Eckel Clinical Audiometric Rooms & Suites
Your Practice Reflects Your Standard of Patient Care

Single Wall Rooms CL10/ HL10 Series

Ideal for industry and private clinics. The smaller models have an inlet silencer in the rear wall and an exhaust silencer integrated in the ceiling. In the larger models, both silencers are in the ceiling panels. All models have a clinical jack panel for greater versatility. The wall panels are mounted on the audiology room floor which in

turn rests on “air cushion” vibration isolator rails. Ideal for sound field measurements, brain stem audiometry, hearing aid evaluation.

Double Wall Rooms C20 / H20 Series

Features higher noise reduction characteristics which are a must in areas where the ambient noise levels are excessively high. The interior wall panels are mounted on the

Audiology Room floor while the exterior walls are placed on the floor of the building. Each double wall Audiology Room is provided with a combination in-swing and out-swing, flush sill, magnetic seal doors. Suitable for clinical and research applications

Single Wall Suite

Two single wall examination rooms can be united to form an audiology suite. The noise reduction characteristics correspond to the attenuation of a single wall room. However, the attenuation of one room with regards to the other resembles the attenuation characteristics of a double wall.

Clinical Audiology Rooms & Suites

The audiology suites are equipped with a wide 762mm (30") window as are the majority of our rooms. This offers a particular advantage when testing young children, so they can see their parents during testing. These suites are ideal for applications requiring strict acoustic control in both test and control environments.

Single Wall Control Double Wall Exam Rooms

Many hospitals insist on this suite. The double wall examination room assures maximum patient cooperation while the single wall control room permits live voice speech testing without any interference from outside noise. The control room has a single door and the examination room has a double door system. These audiometric suites are available with or without a floor in the control room.

Wall & Ceiling Construction

Wall panels are 4" (100mm) and fabricated of galvanized solid steel outer surface and perforated steel inner surface. Ceiling panels include an integrated silenced ventilation system and 6" (150mm) thick with galvanized solid steel outer surface and perforated steel inner surface. Acoustic insulation is dependent on panels and designed to provide independently tested transmission loss of selected panel system (C or CL).

Isolated Floor Construction

Floor panels are available in 2", 3" and 4" (50.8mm, 76.2mm, 101.6mm) thick fabricated from galvanized steel outer and in-

ner (walking) surfaces. The floor panels are supplied with heavy duty framing members and inner surface to support consistent use and accommodation for clients requiring wheelchair accessibility. Acoustic insulation is consistent with that of the wall and ceiling panels. All floors are installed on isolation mounts to protect against structure borne noise sources. Overall step up height is approximately 7" (175mm) from outside.

Doors

Standard door clear openings are 32" (810mm) W x 73 3/4" (960mm) H. The doors are designed to provide similar acoustic performance as the walls and to sit flush when installed. Hardware consists of chrome plated hinges with a cam rise mechanism to ensure both proper seating of the door and ease of closing. A 1" (25mm) door pull handle is used, assuring ease of operation and ADA compliance. Door windows from small to full size are available as an option. Alternate door sizes can be accommodated.

Observation Window

Observation windows are provided, typical nominal size 24" (610mm) W x 30" (750mm) H, fabricated from two layers of laminated safety glass set in an extruded PVC window frame. Alternate sizes are available to suit specific needs.

Jack Panels

Jack panels are installed on all (Jack Panels continued) rooms and suites both single and double wall. Standard jack pan-

els are supplied with twelve .25" (6.3mm) phone jacks, two USB connections and one 1" (25mm) diameter pass-thru. Non-standard configurations are available to suit unique or specific jack requirements.

CSA Approved Electrical – C22.2 601.1 Medical Equip- ment

All rooms are supplied with CSA approved, pre-wired 120 volts recessed internal electrical, including internal and external facing recessed hospital grade duplex receptacles. Power is supplied via a power cord connected to the customer's 120 volts source or may be hard wired upon request. Country specific electric and cord configurations are available for international customers (240v option also available).

Ceiling Integrated Silencer Systems

The integrated silenced ventilation system consists of factory installed extract air fans and a passive intake air flow. The fans are quiet, low power consumption, fans. For customers wanting to connect to their existing HVAC system optional vent collars are available.

Paint Finish

Rooms supplied in a polyurethane enamel low gloss paint finish in Eckel White, Beige, or Warm Grey. Custom color matching and fabric finishes are available on request.



Advanced Audiology Suite Specifications

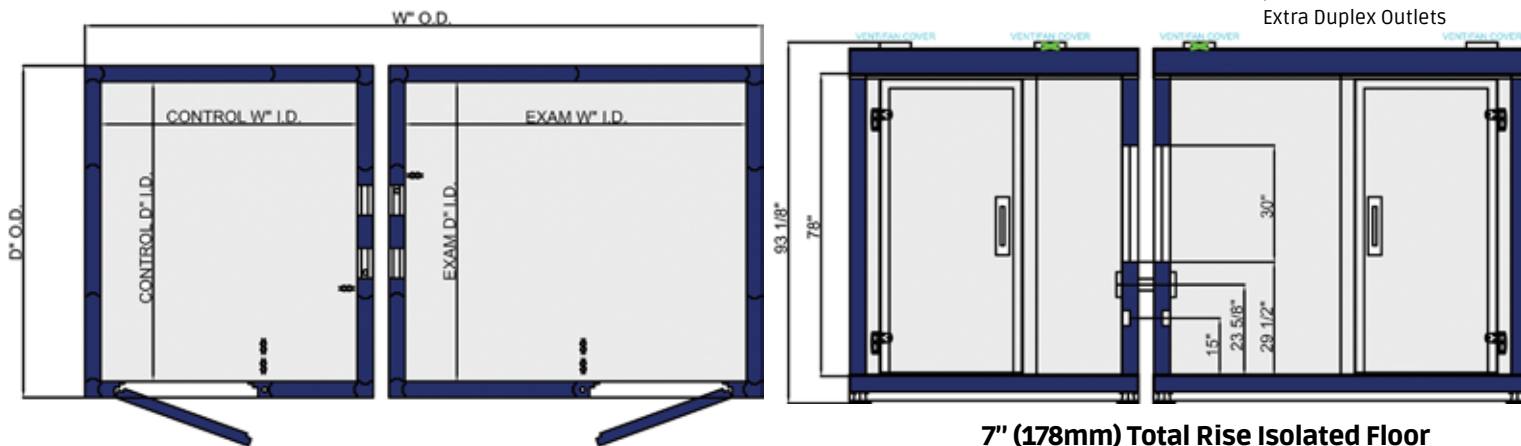
S 34 to S 57 Single Wall Control/Single Wall Exam/Clinical Audiology Suites

Cam-Lock (C) & H Batten (H)

All rooms and suites are available in Cam-Lock or H Batten configurations.

Optional Features

HVAC Collars (1 set) Single Wall Rooms (Includes Internal Utility Box For Thermostat by Others)
20" BY 60" (508mm x 1524mm) Window in Door
Upgrade TO 36" Clear Opening Door
Sprinkler Access Hole
Extra Duplex Outlets



7" (178mm) Total Rise Isolated Floor

Model C (Cam-Lock) H (H-Batten)	Outside Dimensions Width (W) x Depth (D) x Height (H)	Inside Dimensions Width (W) x Depth (D) x Height (H)	Floor Area sq ft / sq m	Weight lb / kg
S-34 / H-34	12'9" x 6'2" x 7'9" 3886mm x 1880mm x 2362mm		78.6 sq. ft. 7.3 sq. m.	5589 lb 2535 kg
	S-34 CONTROL ROOM	4'8" x 5'6" x 7'9" 1422mm x 1676mm x 1981mm		
	S-34 EXAM ROOM	6'5" x 5'6" x 6'6" 1956mm x 1676mm x 1981mm		
S-45 / H-45	14'6" x 7'1" x 7'9" 4420mm x 2159mm x 2362mm		102.7 sq. ft. 9.54 sq. m.	6754 lb 3063 kg
	S-45 CONTROL ROOM	5'6" x 6'5" x 6'6" 1676mm x 1956mm x 1981mm		
	S-45 EXAM ROOM	7'4" x 6'5" x 6'6" 2235mm x 1956mm x 1981mm		
S-56 / H-56	16'4" x 8'0" x 7'9" 4978mm x 2438mm x 2362mm		130.6 sq. ft. 12.13 sq. m.	8013 lb 3635 kg
	S-56 CONTROL ROOM	6'5" x 7'4" x 6'6" 1956mm x 2235mm x 1981mm		
	S-56 EXAM ROOM	8'3" x 7'4" x 6'6" 2515mm x 2235mm x 1981mm		
S-57 / H-57	18'2" x 8'11" x 7'9" 5537mm x 2718mm x 2362mm		162.0 sq. ft. 15.05 sq. m.	9363 lb 4247 kg
	S-57 CONTROL ROOM	7'4" x 8'3" x 6'6" 2235mm x 2515mm x 1981mm		
	S-57 EXAM ROOM	9'2" x 8'3" x 6'6" 2794mm x 2515mm x 1981mm		

Eckel's Audiology Suites are ideal for high noise, high traffic areas.

Advanced Audiology Suite Specifications

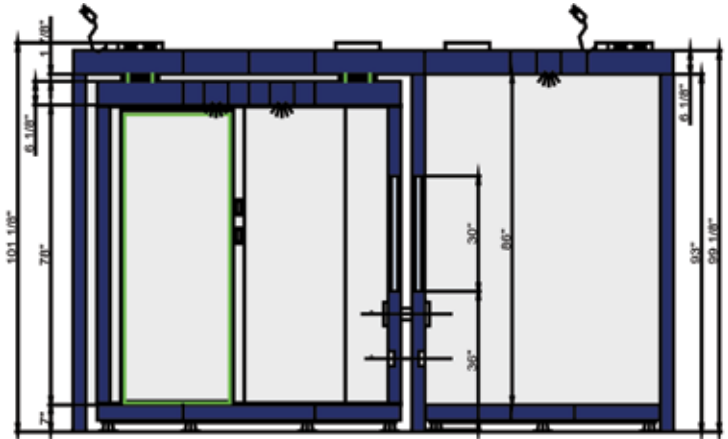
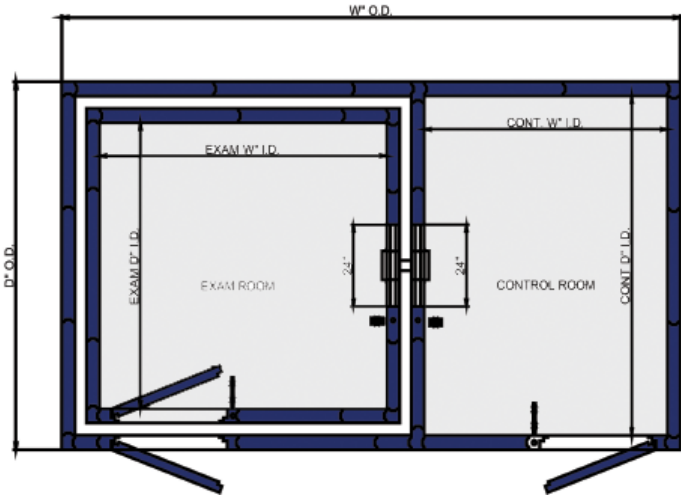
S 121 to S 124 Single Wall Control/Double Wall Exam/Clinical Audiology Suites

Cam-Lock (C) & H Batten (H)

All rooms and suites are available in
Cam-Lock or H Batten
configurations.

Optional Features

HVAC Collars (1 set) Single Wall Rooms (Includes
Internal Utility Box For Thermostat by Others)
20" BY 60" (508mm x 1524mm) **Window in Door**
Upgrade TO 36" Clear Opening Door
Sprinkler Access Hole
Extra Duplex Outlets



7" (178mm) Total Rise Isolated Floor

Model C (Cam-Lock) H (H-Batten)	Outside Dimensions Width (W) x Depth (D) x Height (H)	Inside Dimensions Width (W) x Depth (D) x Height (H)	Floor Area sq ft / sq m	Weight lb / kg
S-121 / H-121	14'6" x 8'0" x 8'5" 2261mm x 2565mm x 2565mm		116.0 sq ft 10.78 sq m	10070 lb 4568 kg
	S-121 / H-121 CONTROL ROOM	5'6" x 7'4" x 7'2" 1676mm x 2235mm x 2184mm		
	S-121 / H-121 EXAM ROOM	6'8" x 6'0" x 6'6" 2032mm x 1829mm x 1981mm		
S-122 / H-122	16'4" x 8'11" x 8'5" 4978mm x 2718mm x 2565mm		145.6 sq ft 13.53 sq m	11825 lb 5364 kg
	S-122 / H-122 CONTROL ROOM	6'5" x 8'3" x 7'2" 1956mm x 2515mm x 2184mm		
	S-122 / H-122 EXAM ROOM	7'7" x 6'11" x 6'6" 2311mm x 2108mm x 1981mm		
S-123 / H-123	18'2" x 9'10" x 8'5" 5537mm x 2997mm x 2565mm		178.6 sq ft 16.59 sq m	13686 lb 6208 kg
	S-123 / H-123 CONTROL ROOM	7'4" x 9'2" x 7'2" 2235mm x 2794mm x 2184mm		
	S-123 / H-123 EXAM ROOM	8'6" x 7'10" x 6'6" 2591mm x 2388mm x 1981mm		
S-124 / H-124	20'0" x 10'9" x 8'5" 6096mm x 3277mm x 2565mm		215.0 sq ft 19.97 sq m	15656 lb 7101 kg
	S-124 / H-124 CONTROL ROOM	8'3" x 10'1" x 7'2" 2515mm x 3073mm x 2184mm		
	S-124 / H-124 EXAM ROOM	9'5" x 8'9" x 6'6" 2870mm x 2667mm x 1981mm		

Double Wall Advanced Noise Control Suite

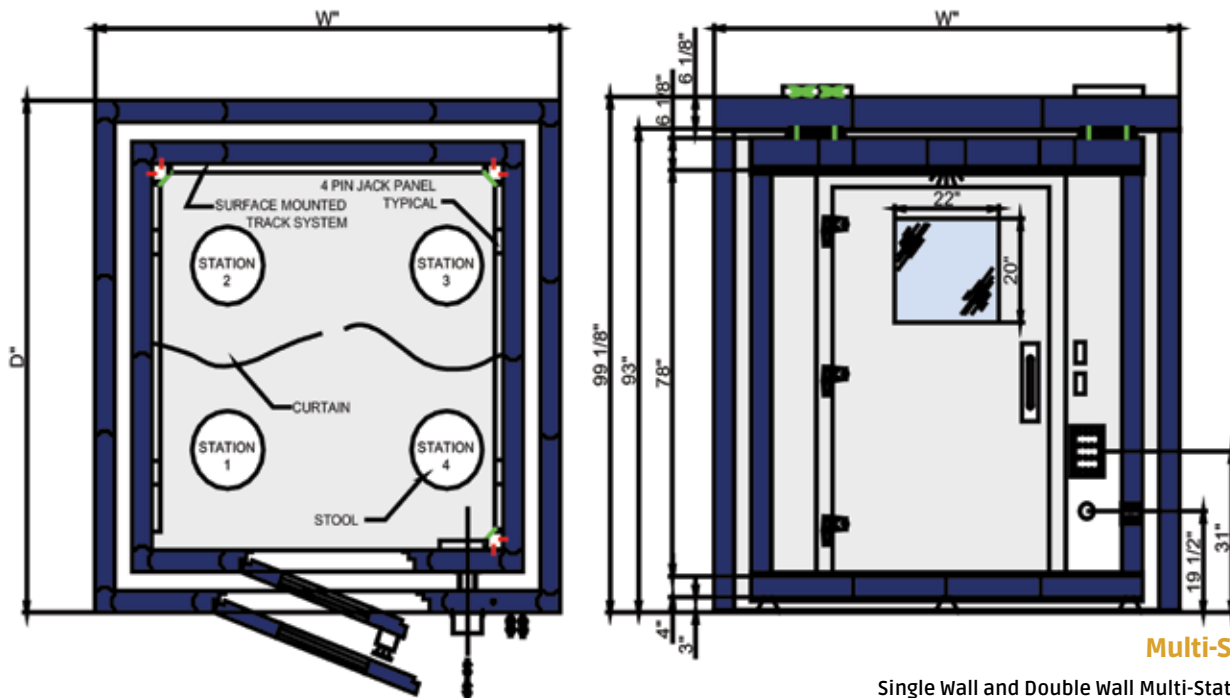
Multi-Station Audiology Suite Specifications

**C DW Multi-Station
Double Wall
Exam/Clinical Audiology Suite**

Cam-Lock (C) & H Batten (H)
All rooms and suites are available in
Cam-Lock or H Batten
configurations.

Optional Features
HVAC Collars (1 set) Single Wall Rooms (Includes
Internal Utility Box For Thermostat by Others)
20" BY 60" (508mm x 1524mm) Window in Door
Upgrade TO 36" Clear Opening Door
Sprinkler Access Hole
Extra Duplex Outlets

7" (178mm) Total Rise Isolated Floor



Multi-Station

Single Wall and Double Wall Multi-Stations are available in 2,4,6,8, and 10 station configurations. (Pictured above with 4 stations)

Model C (Cam-Lock) H (H-Batten)	Outside Dimensions Width (W) x Depth (D) x Height (H)	Inside Dimensions Width (W) x Depth (D) x Height (H)	Floor Area sq ft / sq m	Weight lb / kg
C DW M2 / H DW M2	8' 2 3/8" x 5' 6 3/8" x 8' 3 1/8" 2499mm x 1686mm x 2518mm	6' 2 3/8" x 3' 6 5/16" x 6' 6" 1889mm x 1075mm x 1981mm	45.34 sq. ft. 4.21 sq. m.	3414 lb 1549 kg
C DW M4 / H DW M4	8' 2 3/8" x 8' 2 3/8" x 8' 3 1/8" 2499mm x 2499mm x 2518mm	6' 2 3/8" x 6' 2 3/8" x 6' 6" 1889mm x 1889mm x 1981mm	47.40 sq. ft. 4.40 sq. m.	4385 lb 1989 kg
C DW M6 / H DW M6	8' 2 3/8" x 9' 4 9/32" x 8' 3 1/8" 2499mm x 2852mm x 2518mm	6' 2 3/8" x 7' 4 9/32" x 6' 6" 1889mm x 2242mm x 1981mm	76.70 sq. ft. 7.13 sq. m.	4807 lb 2180 kg
C DW M8 / H DW M8	8' 2 3/8" x 10' 5 7/8" x 8' 3 1/8" 2499mm x 2588mm x 2362mm	6' 2 3/8" x 8' 5 7/8" x 6' 6" 1889mm x 2588mm x 1981mm	85.99 sq. ft. 7.99 sq. m.	5919 lb 2685 kg
C DW M10 / H DW M10	8' 2 3/8" x 12' 10" x 8' 3 1/8" 2499mm x 3912mm x 2518mm	6' 2 3/8" x 10' 10" x 6' 6" 1889mm x 3302mm x 1981mm	105.2 sq. ft. 9.77 sq. m.	6072 lb 2754 kg





Custom finishes help to comfort children and families

Limitless Possibility

Eckel has a wide variety of customized panel, room and suite treatments to make your audiology environment a reflection of you and the clients you serve.



A finish of greens and white make a state of the art audiology system in Ireland shine. Eckel's customized approach to end-user satisfaction allows our clients and their customers to enjoy a wide array of attractive color and image overlay treatments.

Eckel's engineered noise control products and systems are strong to the finish with a wide variety of custom treatments to appeal to the style and tastes of your valued clientele.

Dream it!

Push the limits of your imagination! Eckel Design Teams deliver a variety of creative custom finishes, corporate branding, bright imagery and memorable color combinations to

present your audiology business ahead of the competition. Children and adults alike are thrilled to find brilliant pictures and colours over the expected sterility of traditional workplace environments.



An audiologist and her hot pink suite bring joy to a child.



ECKEL

NOISE CONTROL TECHNOLOGIES

Innovative Technologies to
Better the Human
Experience

35 Allison Avenue PO Box 776
Morrisburg, Ontario K0C 1X0
Canada
Phone: +1-613-543-2967

Eckel Product Inquiries
1-800-563-3574
support@eckelacoustics.com
sales@eckelacoustics.com

100 Groton-Shirley Rd
Ayer, Massachusetts 01432
United States
Phone: +1-978-772-0840

Audiology Suites & Multi-Stations 2019

Find Your Local e3
Equipment Expert

Toll-free 1-800-323-4371

info@e3diagnostics.com

www.e3diagnostics.com

e3 Representative: _____

