



# RELIABLE CLINICAL TYMPANOMETER



TYMPSTAR PRO

# CONTINUING THE STANDARD FOR CLINICAL IMMITTANCE

## GSI TYMPSTAR PRO RELIABLE AND ERGONOMIC

The GSI TymStar Pro™ sets the clinical standard for performing a full range of middle ear measurements on patients of all ages. GSI's familiar user interface will instantly feel comfortable to audiologists. GSI understands that efficiency is required in today's busy audiology practice and strives to provide hearing healthcare professionals versatility, efficiency, and reliability in a comprehensive middle ear analyzer.



## GSI SUITE OFFERS REPORTING AND COUNSELING

With one button press, immittance test results are transferred from the TymStar Pro to GSI Suite software where audiometric, tympanometric, and OAE test results may be combined into a single comprehensive report. Viewing tympanometry, reflex, and Eustachian tube function results assist the clinician with explaining the middle ear evaluation.





3 KEY

# BENEFITS



## **CONFIDENCE IN TESTING**

The TymStar Pro is a comprehensive middle ear analyzer that takes precision to the next level. Evaluate neural integrity, reflex pathways, and Eustachian tube function with one touch. Have complete confidence during reflex threshold testing with artifact-free tracings. Eliminate the “null” point that cancels out the reflex with multiplex pulsed tone stimulation for ipsilateral reflex recordings.



## **STREAMLINE DAY TO DAY OPERATIONS**

Benefit from Auto Start in both screening and diagnostic tympanometry. Save time and improve consistency in testing with user defined auto sequence testing by performing tympanometry, reflex threshold, and reflex decay testing with a single button press. Define patient or user specific test protocols that will adjust settings for immediate testing.

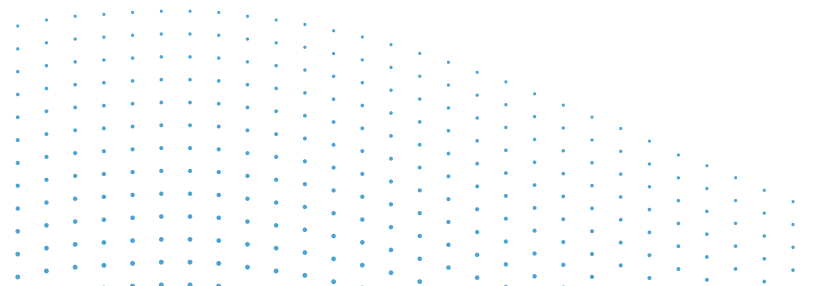


## **EVERY PATIENT POPULATION**

Take advantage of multiple probe tone frequencies and Multi-Hz testing. Test a diverse patient population with differing middle ear pathologies with 226, 678, and 1000 Hz probe tones. Validate electrode placement for cochlear implant patients with ESRT. Start and stop tests and switch test ears from the probe box so you can interface with difficult to test patients.







# KEY DEVICE FEATURES

## **TOUCH SCREEN MONITOR**

The 12 inch color display allows the examiner to change parameters with a single touch of the screen.

## **CUSTOMIZABLE USER TESTS**

The predefined protocols save time and create consistency in testing. Define auto sequence tests that are consistent with billing codes.

## **ZOOM FUNCTION**

For detailed analysis, use the zoom to analyze test results. Verify peak pressure and mark/verify reflex thresholds.

## **MULTIPLE PROBE TONE FREQUENCIES**

Test a diverse patient population with 226, 678, and 1000 Hz probe tones. These standard probe tones allow efficient testing on all.

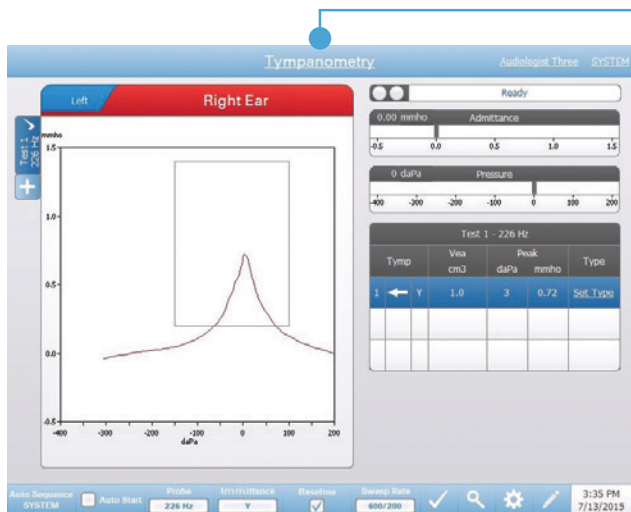
## **STAND-ALONE PC ENABLED**

EMR/EHR compatible with GSI Suite for reporting and counseling.

## **5 TEST TYPE BUTTONS**

Fast transition between tests for accurate and efficient testing. Tests include Screening, Tymp, Reflex, ETF, and More Tests.

# QUICK AND CONVENIENT TESTING



## DIAGNOSTIC AUTOMATIC

Automatically display peak pressure, admittance at peak, and ear canal volume. Assign a tymp type (A, B, C, A(s), A(d)), or customize a type to suit your reporting needs. Initiate testing from the device, shoulder probe box, or utilize Auto Start to begin the test as soon as a seal is obtained. Take full control with a manual pressure sweep with up to three tracings per tab.

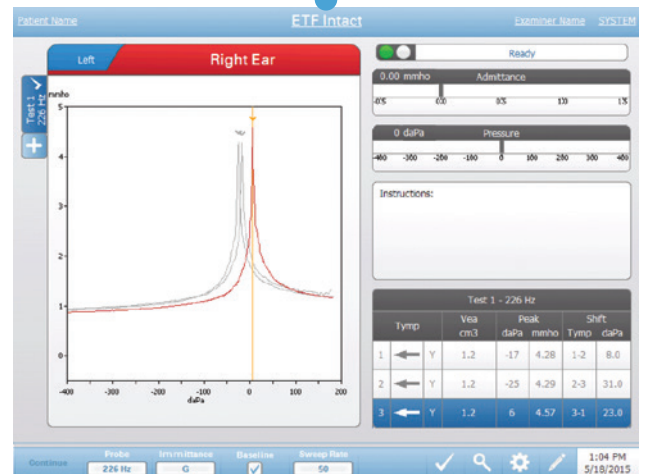
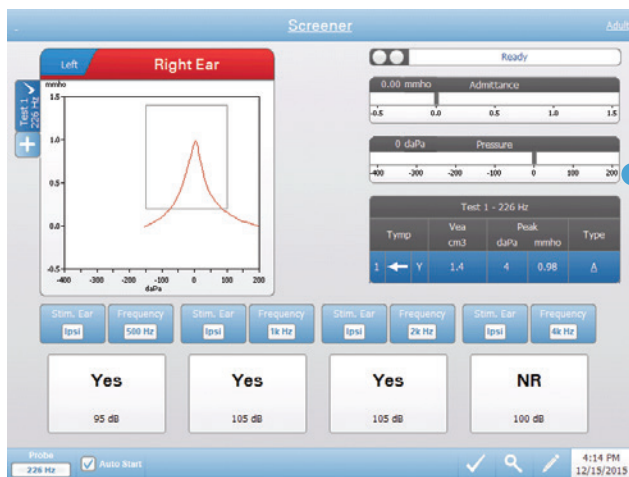
## MULTI FREQUENCY

The Multi-Hz test provides clinicians the tools needed to confidently identify resonance frequency of the middle ear system. This powerful test can be completed five times faster than its predecessor with comprehensive results displayed in 13 seconds. Multi-Hz offers the efficiency and accuracy needed to assess pathologies in the middle ear system.



# EUSTACHIAN TUBE FUNCTION

Evaluate Eustachian tube function on patients with intact or perforated tympanic membranes. Quickly document a patulous Eustachian tube with a dedicated and customizable test type. Test and patient instructions will appear when appropriate for smooth transition between steps.



## SCREENING TYMPANOMETRY

Quickly perform an evaluation of the middle ear in the screening mode. Automatic start on seal for both 226 and 1000 Hz probe tones ensures fast test times. It is possible to automatically run up to four screening reflexes in any combination of ipsilateral or contralateral stimulation.



# RELIABLE CLINICAL TYMPANOMETER

## TECHNICAL SPECIFICATIONS

### DIMENSIONS AND WEIGHT

**W x D x H:** 16 in x 11 in x 14.5 in (41 cm x 28 cm x 77 cm)

**Weight:** 12 lb (5.5 kg)

**Test Types:** Tympanometry, Acoustic Reflex Threshold, Reflex Decay, Eustachian Tube Function (Intact, Perforated, and Patulous)

**Protocols:** Diagnostic, Screening, Multi-component Tympanometry, Auto Sequence, and User Defined

**Display:** Internal color touch screen and optional external HDMI monitor

**Interface:** USB (keyboard, mouse, Flash Drive, PC communications)

**Printout:** External printer

**Probe Tone:**

- 226 Hz (85 dB SPL  $\pm$  1.5 dB)
- 678 Hz (72 dB SPL  $\pm$  1.5 dB)
- 1000 Hz (69 dB SPL  $\pm$  1.5 dB)

- Accuracy:  $\pm$  1%
- Harmonic Distortion: Less than 1%

### ADMITTANCE MEASUREMENTS

**Range:** 226 Hz (-10 to +10 mmho) 678 Hz (-21.0 to +21 mmho) 1000 Hz (-32.0 to +32 mmho)

**Sensitivity Scale:** Auto scales to appropriate range, manual selection also possible in Reflex Modes only

**Accuracy (226 Hz):**

- **Tymp Mode:**  $\pm$  5% of reading or  $\pm$  0.1 mmho, whichever is greater
- **Reflex Mode:**  $\pm$  5% of reading or  $\pm$  0.02 mmho, whichever is greater

### PRESSURE MEASUREMENTS

(Load volume of 0.2 to 7.0 ml)

**Range:** Normal = +200 to -400 daPa, Wide = +400 to -600 daPa

**Accuracy:**  $\pm$  10% of reading or  $\pm$  10 daPa, whichever is greater

**Sweep Rate:** 12.5, 50.0, 200, 600 and 600/200 daPa and manual

**Sweep Accuracy:** 10% of nominal rate

**Maximum Limits (in 0.5cc cavity):** -800 daPa and +600 daPa

### REFLEX MEASUREMENTS

**Stimuli:** 250, 500, 1k, 2k, 4k, BBN, LBN, HBN, click, external input, non-acoustic

**Frequency Accuracy:**  $\pm$  3%

**Harmonic Distortion (THD):** Less than 5% (measured acoustically)

**Noise Signals:** (3 dB bandwidths)

**Low Band:** 400 -1600 Hz

**High Band:** 1,600 -4000 Hz

**Broad Band:** 400 -4000 Hz

**Intensity Range:** 35 to 120 dB HL

**Step Size:** 5 dB, 1 dB and 2 dB

**Calibration Accuracy:**  $\pm$  3 dB

**Step Accuracy:**  $\pm$  0.5 dB

**ON/OFF Ratio:** 70 dB minimum

### STANDARD ACCESSORIES

- Probe assembly (including contralateral insert phone)
- Ear tip sample kit
- Calibration test cavity
- Cleaning kit
- Probe mount kit (shoulder, clip, wrist band)
- User Quick Guide
- Reference Instruction Manual

### ENVIRONMENTAL

**Storage:** +32° F (0° C) to +122° F (50° C)

**Operating:** +59° F (+15° C) to +95° F (+35° C)

**Transport:** -4° F (-20° C) to +122° F (+50° C)

**Humidity:** 90% at 95° F (+35° C) (non-condensing)

**Atmospheric Pressure:** 98 kPa to 104 kPa

### POWER

**Power Consumption:** 60 Watts Maximum

**Input Voltage:** 100-240 VAC

**Input Frequency:** 50-60 Hz

**Average Operating Current Idle:** 220 mA

**Average Operating Current Running Test:** 290 mA

### QUALITY SYSTEM

Manufactured, designed, developed, and marketed under an ISO 13485 certified quality system

### COMPLIANCE

- Designed, tested, and manufactured to meet the following domestic (USA), Canadian, European, and International Standards:
- IEC 60601-1, EN 60601-1 International Standards for Medical Electrical Equipment
- CAN/CSA-C22.2 No. 60601-1
- ANSI S3.39, IEC 60645-5, ISO 389
- Medical Device Directive (MDD) 93/42/EEC

