

# AUDERA PRO ABR QUICK GUIDE

The operating manual contains information pertinent to the use of the GSI Audera Pro, including safety information, as well as maintenance and cleaning recommendations. Read the manual in its entirety prior to use of the Audera Pro on a patient.

## TESTING ENVIRONMENT

It is important that the test environment be conducive to collecting good quality test data free from excessive noise. The GSI Audera Pro should be used in a suitable acoustically quiet testing environment such as a sound booth or quiet room. To minimize the amount of electrical noise, it is recommended that the Audera Pro be plugged directly into a dedicated, earth-grounded electrical outlet. Any unnecessary equipment such as computer monitors, cellphones, fluorescent lights, electronic beds, etc should be turned off during testing. To minimize muscle artifact and to encourage relaxation or sleep, a comfortable recliner or non-metal, comfortable bed should be used.

## PREPARE THE SOFTWARE

1. From the opening window, click on the search patient icon to select an existing patient or click on the new patient icon to create a new patient file and enter First Name and Last Name (required). Click OK.
2. Select the EP icon to launch the evoked potential module.
3. Go to Protocol, Modality to load the ABR test type and default test settings or click on the load settings icon to select a saved protocol.

**SEARCH  
PATIENT**



**NEW  
PATIENT**



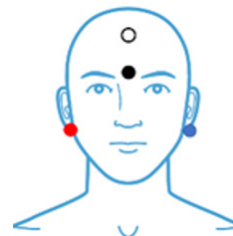
**EP  
ICON**



## PREPARE THE PATIENT

1. Scrub the skin at four locations: right and left mastoids or ear lobes, high forehead and low forehead.
2. Using the 4-snap lead patient cable, apply the snap electrodes on the patient's head as shown in Figure A.
3. Check the electrode impedance by selecting the impedance icon from the side toolbar. See Figure B. Under 5 K ohms is ideal. If necessary, re-scrub if the impedance is higher than 5k ohms.
4. Explain the test procedure to the patient.
5. Place the patient in a comfortable position on the bed/recliner and place the transducers. Ensure the transducer cables are separated from the patient cable and electrode leads.

**FIGURE A**



**FIGURE B**



**IMPEDANCE  
ICON**

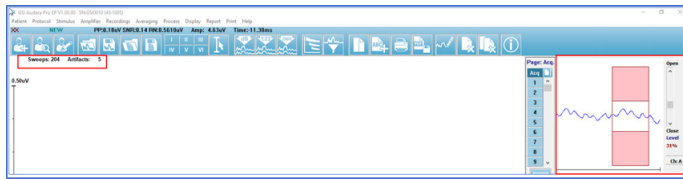


## PERFORM THE ABR

1. Begin the collection by selecting the Acquire button from the Collection toolbar.

2. During collection, monitor the incoming EEG ensuring it falls within the acceptable range (white) and review the running Sweep accepted and rejected counts in the upper left side of the collection screen. See Figure C.

**FIGURE C**



**SPLIT SCREEN**

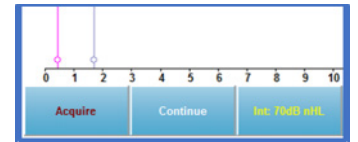


**ADD CURSORS**



3. During collection it may be helpful to:
  - a. Select the Split Screen icon which toggles between full and split between full screen and split screen.
  - b. Select Add Cursors located at the bottom left of the recording area to assist in waveform marking.
  - c. Sort the displayed waveforms according to intensity level, order of acquisition or click rate by selecting the appropriate icon.

**RECORDING AREA**



**WAVEFORM SORTING**



## MAKING WAVEFORMS

1. Click on the desired waveform to mark. It will appear green to indicate it is the Active waveform.
2. Select the peak label from the tool bar. Selected label will appear red.
3. Hover the mouse slightly above the peak or below the peak and click once for the marker to appear. Fine tune the marker using the arrow keys on the keyboard or drag the marker to the desired location.
3. An alternate way to mark a wave is to hover the mouse over the desired point, right click and go to Mark Peak and select appropriate label.

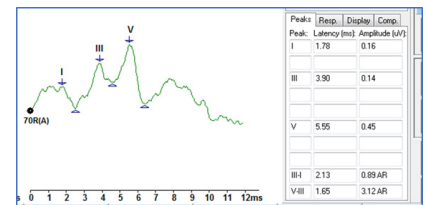
*NOTE: A marked point consists of the label and two peak indicators. The peak indicators are displayed as a down arrow and triangle. The top arrow indicates the latency. The bottom triangle may be used to mark the trough of the wave to obtain the amplitude measure. Drag the bottom triangle to the desired location on the wave to obtain the amplitude.*

4. To view the recording information of the active waveform including peak latencies and amplitudes, select the Recording Information icon on the side toolbar.

**PEAK LABELS**



**FIGURE D**



**RECORDING INFORMATION**



## PRINT THE REPORT

1. Arrange the collected waveforms on the page by using the Waveform Sorting options or dragging the waveforms to the desired locations.
2. On the side toolbar, select the Page Settings icon and select "Send all data on this page to" the desired page (1-9).
3. To add report information such as case history, test findings, or recommendations, go to Report, Add Text.
4. To save the report select Report, Save Report.
5. Select Print menu and select desired printout.

**PAGE SETTINGS**

