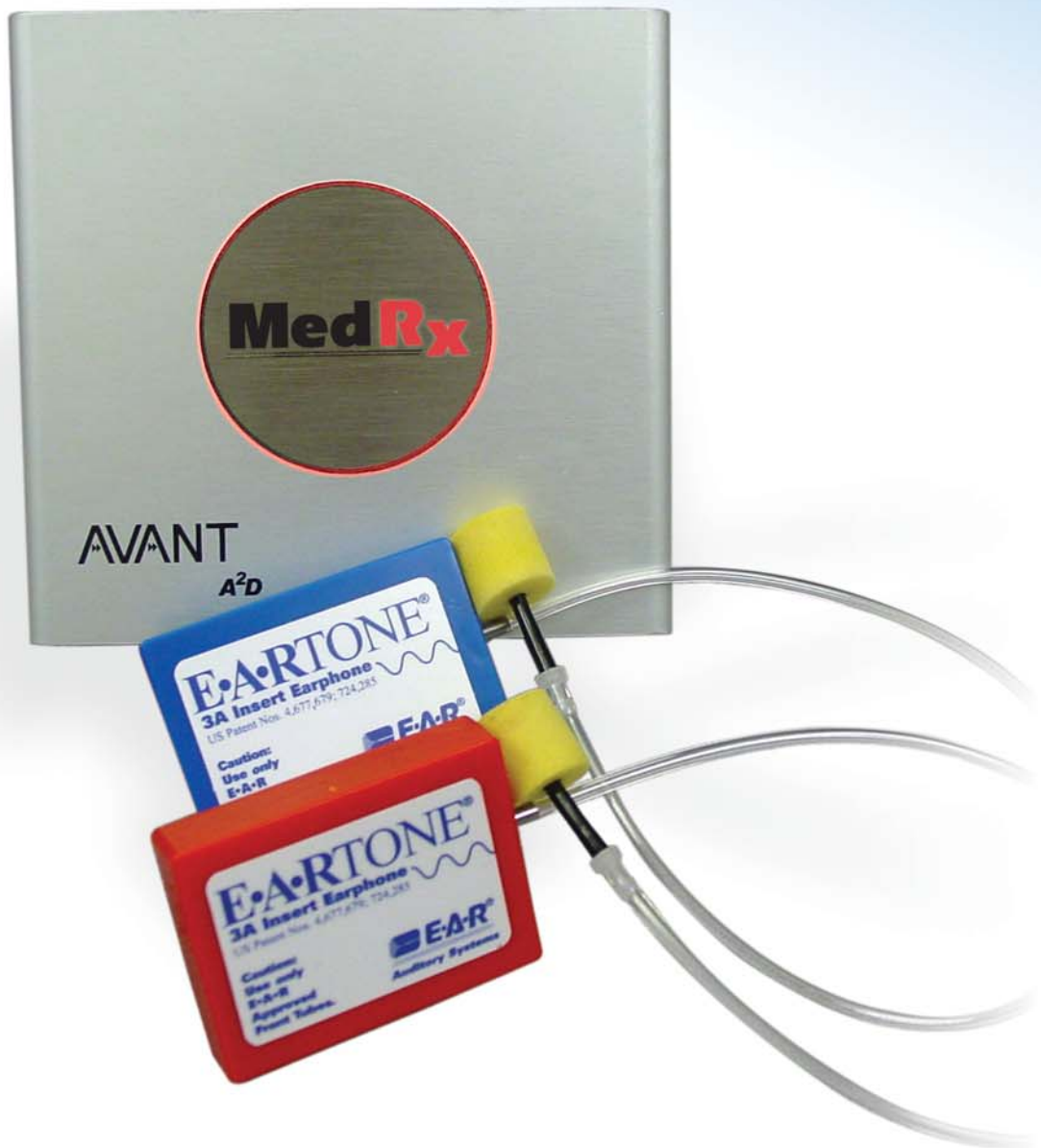


INSTALLATION MANUAL

# AVANT A<sup>2</sup>D Audiometer



**MedRx** INC.™

Let Our Image Enhance Your Image

AVANT A<sup>2</sup>D Manual • Rev. 1 • Effective 3/17/06

# Contents

AVANT™ A²D Software Installation .....	3
AVANT™ A²D Driver Installation .....	4
AVANT™ A²D Setup .....	5-7
Loading Calibration Files .....	7
Wiring Diagrams .....	8
Limited Warranty .....	9

To Connect Your **Video Otoscope**  
See Separate Video Otoscope Manual Supplied  
With Your Order

**MedRx** INC™

www.medrx-usa.com

1200 Starkey Rd., #105, Largo FL 33771

Toll Free: (888) 392-1234 • (727) 584-9600

Fax: (727) 584-9602 • Email: medrx@medrx-usa.com

# Software Installation

## Do Not Plug in the AVANT A<sup>2</sup>D USB Cable yet!

- Insert the AVANT A<sup>2</sup>D CD-ROM into the CD drive. Wait until the **Setup program starts**. If the Setup does not start, open the Windows Explorer and double-click on the CD-ROM icon.
- On the Setup screen, choose **Install AVANT A<sup>2</sup>D**. Follow the instructions on the screen.

Note: The installation may ask you to update DirectX. If it does, follow the DirectX setup instructions on the screen.

Continue with Driver Installation on next page.

# Driver Installation

- **Connect the USB cable** from the AVANT A<sup>2</sup>D to your computer when prompted. **Wait for the system to copy and install default drivers.**
- Once Windows has finished installing default drivers, choose **Install Drivers** on the AVANT A<sup>2</sup>D Setup screen. Follow the installation procedure (choose *Next* button) until the installation is finished.

Note: If the driver signature check screen appears, ignore it by clicking 'Continue Anyway'

- **Exit the Setup screen** when the driver installation is finished.

Continue with AVANT A<sup>2</sup>D Setup on the next page.

Note: On Windows XP the driver is installed only for one USB connector on your computer or hub. If you need to plug the AVANT A<sup>2</sup>D to a different USB connector, you will need to reinstall the driver. Note: Drive installation is necessary only once per USB connector.

# AVANT A²D Setup

**The AVANT A²D Software and the drivers must be installed before proceeding**

- Start the AVANT Audiometer software by clicking on the **AVANT A²D icon** on Windows desktop.
- From the AVANT A²D main screen choose **File** and then choose **Advanced Options**.
- On the Advanced Option screen choose the **Audio tab**.
- On the Audio page click on **Audio Properties** to open **Sound and Multimedia Properties** screen.

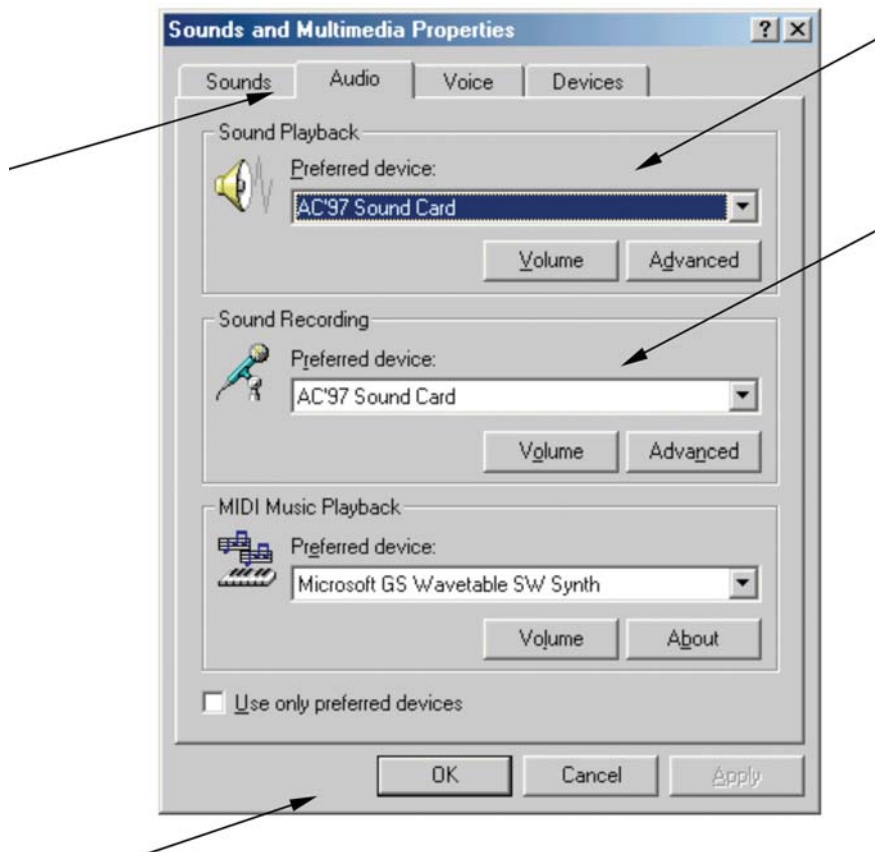
Continued on next page.

# Software Setup Cont.

- On the Sound and Multimedia Properties screen, make sure the **Audio** page is selected.
- Click the **Preferred device** box for both Sound Playback and Sound Recording. In both cases make sure to select the preferred devices **different** from the **MedRx A²D Audio**.

Normally they should be set to the sound card that is installed on your computer. If you do not have a sound card installed on your computer, leave the preferred devices set to **MedRx A²D Audio**.

- Once the preferred devices are set, click on the **OK button**.



**(Note:** Windows uses the preferred devices for regular needs, such as playing back event sounds or music files. Setting the preferred device different from the one used by the AVANT Audiometer will prevent Windows and AVANT Audiometer from trying to use the same sound device at the same time.)

## Software Setup Cont.

- On the AVANT Audio properties page, click on the **Output Device** box and select **MedRx A<sup>2</sup>D Audio** from the list.
- Make sure the **Input Device** and **Mixer Device** are also set to **MedRx A<sup>2</sup>D Audio**. If not, click on the appropriate box and change the device.
- When finished, click on **OK**.

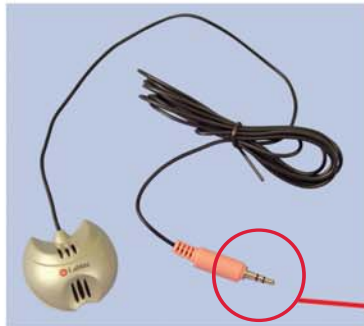
## Loading Calibration Files

- From the AVANT A<sup>2</sup>D main screen, choose **Functions**, then **Calibrate**, and then **Load Calibration Files**. The Load Calibration screen will open.
- **Insert the AVANT A<sup>2</sup>D Calibration CD-ROM** disk into CD-ROM drive.
- Click **Load** on the Load Calibration screen. The program will search for the calibration files and load them.

Patient Handswitch

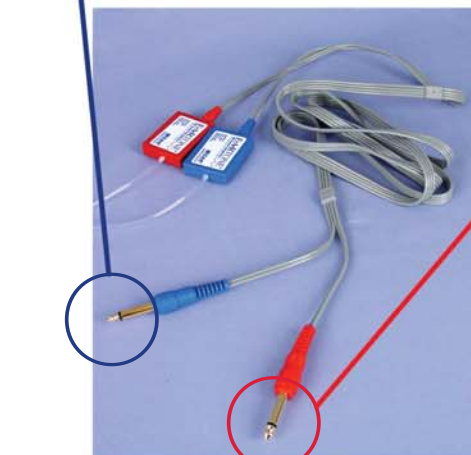


USB Cable

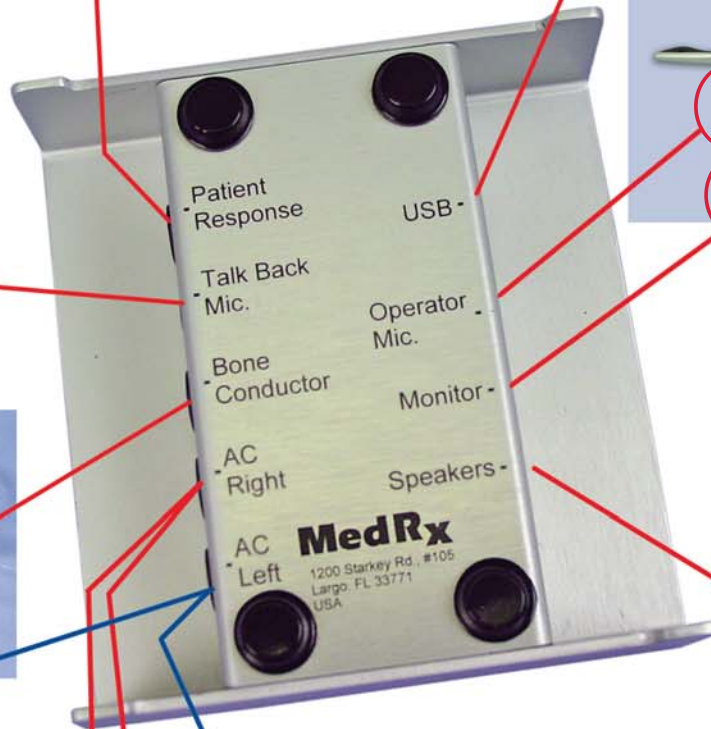


Talk Back Mic

Bone Conductor



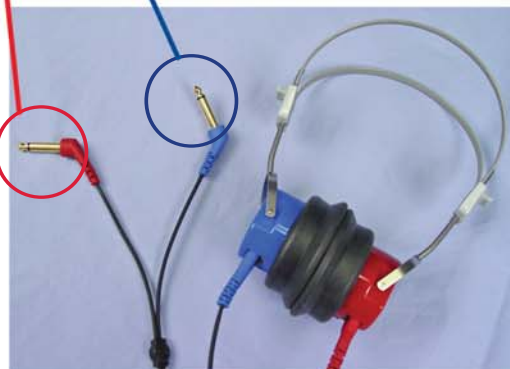
Insert Earphones



Headset



To Sound Booth Amplified Speakers



TDH Headset (Optional)



# Limited Warranty

MedRx, Inc warrants the AVANT A²D System to be free from defects in material and workmanship for one year from the time of purchase. If this system fails to perform as specified during this period, the purchaser is responsible for calling MedRx at (888) 392-1234. The company's representative will advise the owner to either return specific components or the entire system to:

**MedRx, Inc.**  
**1200 Starkey Road #105**  
**Largo, FL 33771**

MedRx will repair or replace any defective parts, fully test the system and/or components and ship the system promptly back to the owner. There is no cost for this warranty service, provided the system is one year old or less and has not been misused, abused or damaged. Such damage includes, but is not limited to, dropping, exposure to excessive heat greater than 100°F and water/liquid damage.

Repair or replacement of the system as provided under this warranty is the sole and exclusive remedy of the purchaser. MedRx shall not be liable for any consequential or incidental damages, or for breach of any express or implied warranty. Except to the extent of applicable law, any implied warranty, merchantability or fitness of this product is limited to the duration of this warranty.

MedRx will, at its discretion, service and repair out of warranty components at the purchaser's request, charging for parts and labor as necessary.

The limited warranty is deemed void if software or hardware is installed on the AVANT A²D which is not pre-approved by MedRx, Inc. Approved software includes NOAH™ and HIMSA approved hearing aid manufacture programming modules for fitting hearing aids.

MedRx, Inc is not responsible for problems resulting from installation of unapproved software or hardware. In the event of unapproved software or hardware installed on the system causing a conflict with the AVANT A²D functions, MedRx will service the problem for a fee to be determined at the time of service.

Consult your MedRx Technical support member for other alternatives for back up.