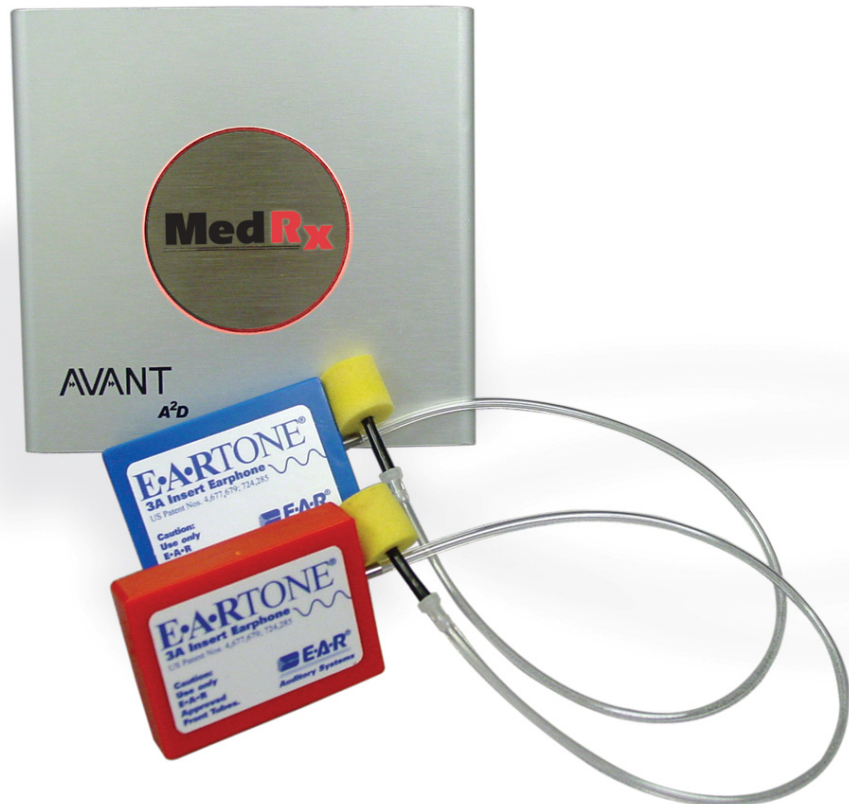


INSTALLATION MANUAL

AVANT™

A²D Audiometer



MedRx INC.®

This Page Intentionally Left Blank

Contents

Getting to Know Your AVANT™ A ² D	4
Software Installation	6
Driver Installation	8
Loading the Calibration Files	11
Limited Warranty	12



#0086

MedRxINC®

www.medrx-usa.com

1200 Starkey Rd., #105, Largo FL 33771

Toll Free: (888) 392-1234 • (727) 584-9600

Fax: (727) 584-9602 • Email: medrx@medrx-usa.com

MedRx's Authorized Representative in Europe

(Regulatory affairs only)

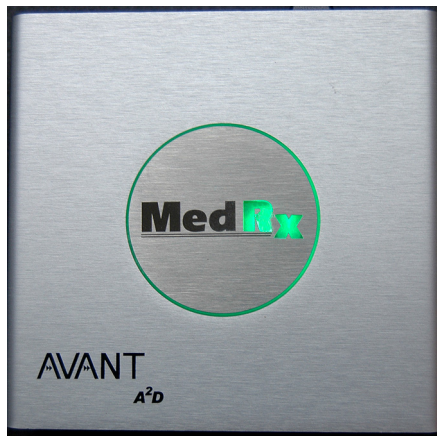
Emergo Europe, Molenstraat 15

2513 BH The Hague, The Netherlands

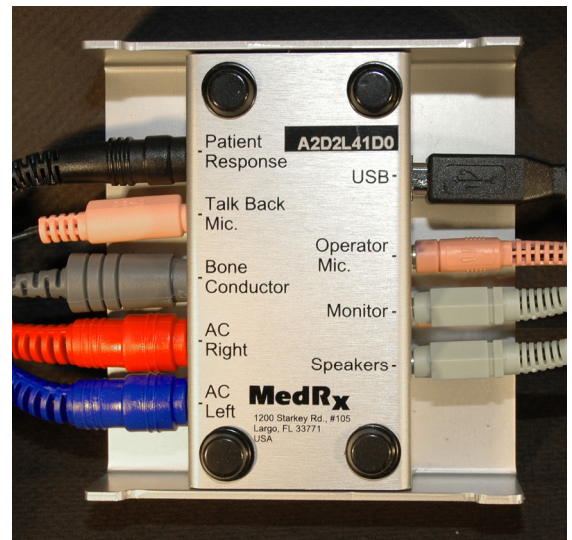
Tel: (31) (0) 70 345-8570 • Fax: (31) (0) 70 346-7299

Getting to Know Your AVANT A²D Audiometer

The AVANT A²D represents a new era of ultra compact diagnostic audiometry for your office. Compact yet rugged, this PC-Based system is USB powered and supports all ANSI and IEC audiometric tests. The following section of this manual will familiarize you with the physical features and accessories of the A²D system.

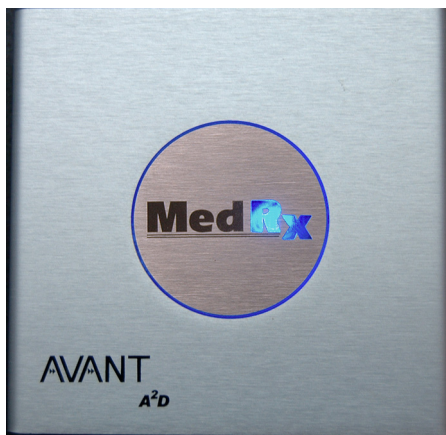


Front View

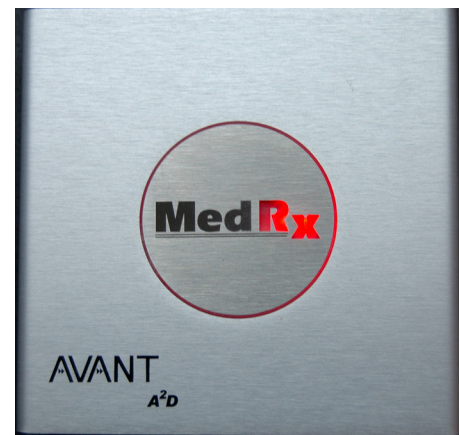


Rear View

A unique feature of the AVANT A²D Audiometer is the switching light panel which indicates which ear is selected in the software. When the unit is powered up, but no ear is selected, the light shines green as shown above. During testing, the light shines blue when the left ear is selected and red when the right is selected as shown below.

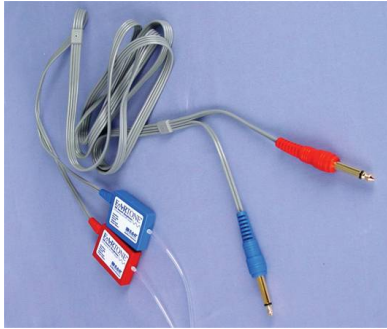


Left Ear Selected



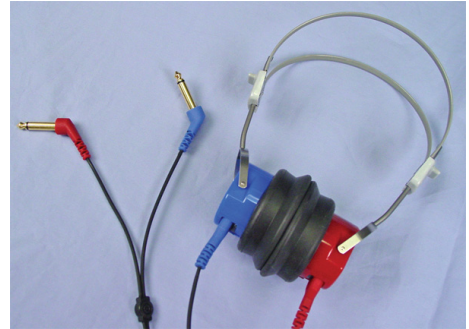
Right Ear Selected

Transducers and Accessories

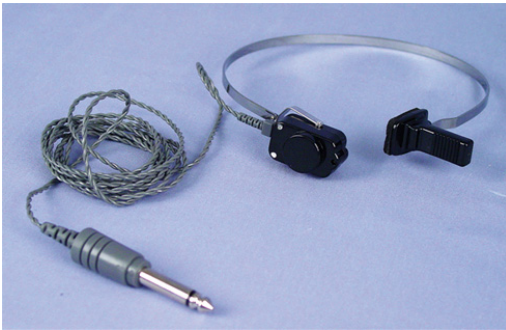


Insert Earphones

NOTE: The AVANT A²D supports both Insert and TDH earphone, however only one set of earphones is included with each system.



TDH-39 Earphones



Bone Conductor



Talkback Microphone



Patient Response Switch



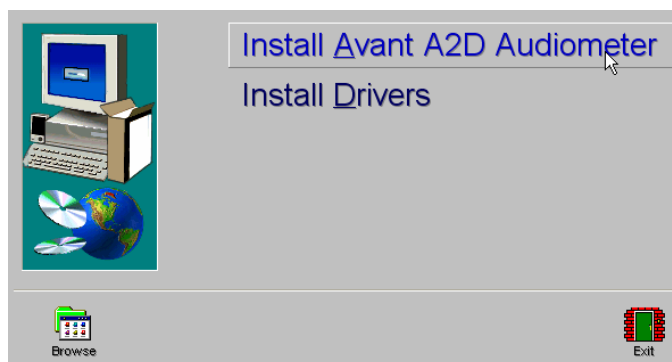
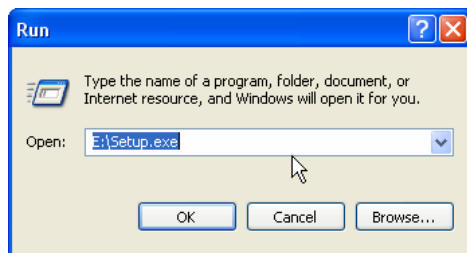
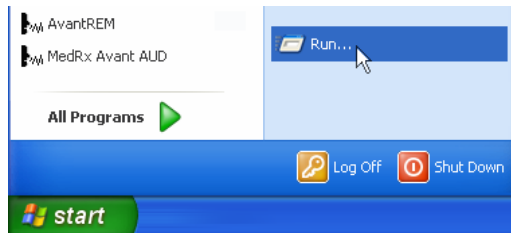
Operator Mic and Monitor



USB Cable

Software Installation

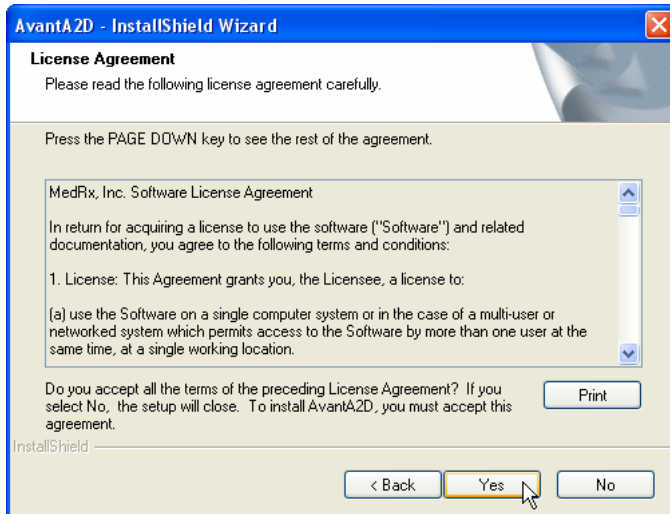
Do Not Plug in the AVANT A²D USB Cable yet!



1. Insert the AVANT A²D CD-ROM into the CD drive. Wait until the Setup program starts.
 - If the Setup program does not automatically start, click:
 - **Start**
 - **Run**
 - Type **d:/setup.exe** in the window where 'd' is the drive letter assigned to the CD ROM drive on your computer.

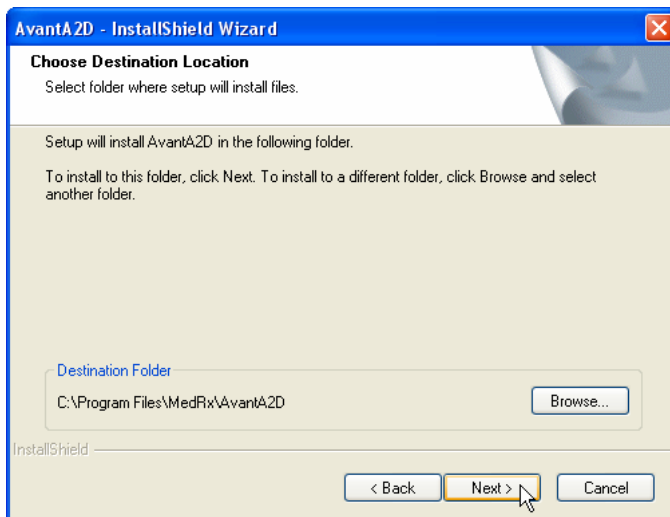
2. On the Setup screen, choose **Install AVANT A2D Audiometer**.

3. This is the Welcome screen.
 - To continue, Click **Next**.



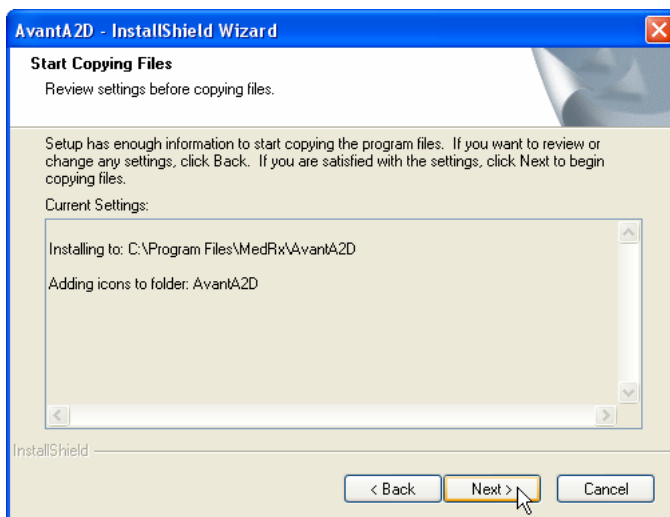
4. Read the Software License Agreement. This important document defines the acceptable usage of the A²D Audiometer.

- After reading the Agreement, click **Yes**.



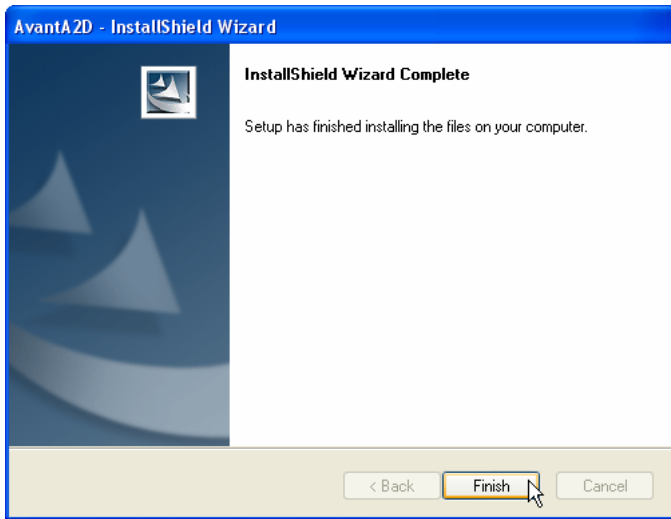
5. This screen indicates the location of the program files. The default location is recommended for most users. If necessary, this location can be changed.

- To continue with the default settings, click **Next**.
- To change the location of the files (advanced users or system administrators only) click **Browse**.



6. This screen summarizes the installation configuration.

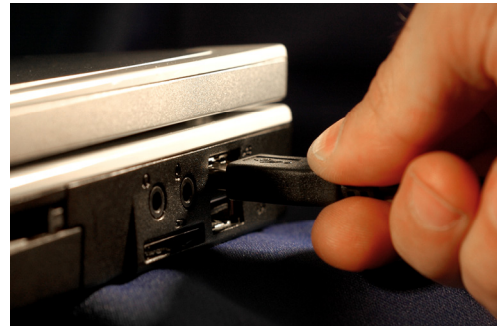
- To continue, click **Next**.
- To make changes, click **Back**.



7. When the installation is complete, click **Finish**.

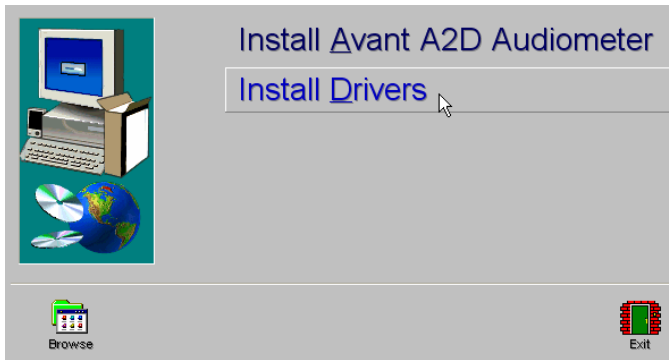
Driver Installation

Connect the USB cable from the AVANT A²D to your computer as shown below.

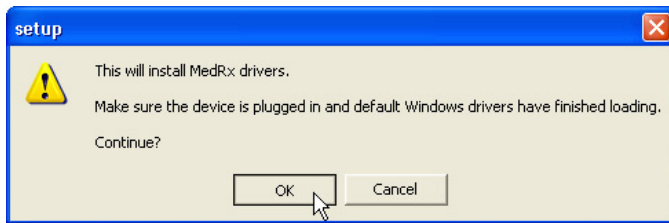


Wait for the system to copy and install default drivers. During this process, you will see the following prompts in your system tray (lower right corner of the screen).





1. After the Window drivers have been installed, click **Install Drivers**.



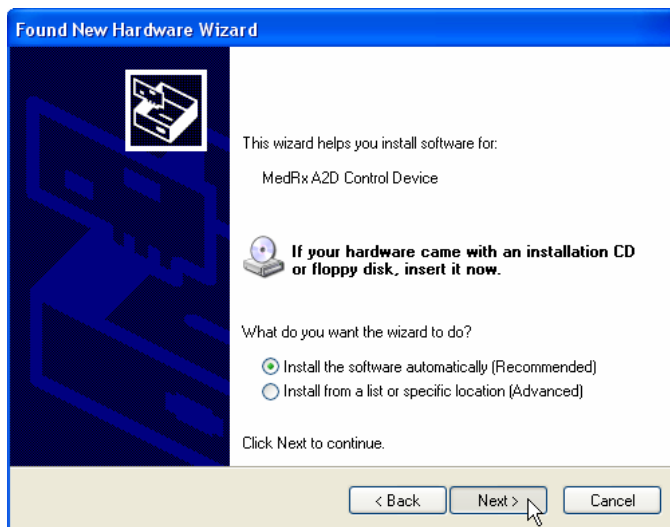
2. When this screen appears, click **OK**.



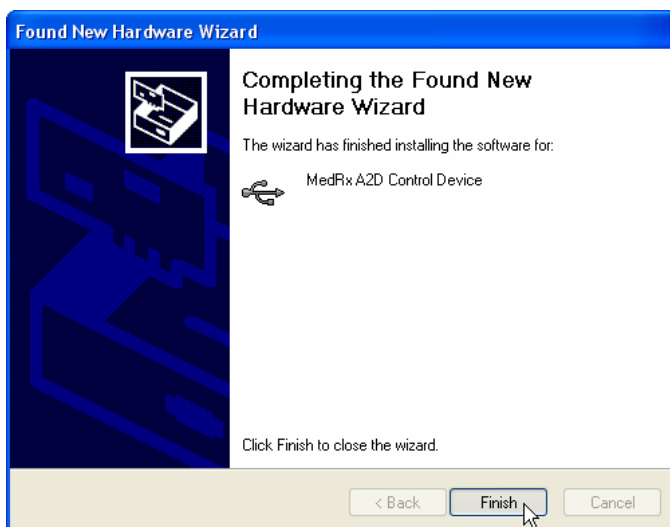
3. When the driver signature check screen appears, click **Continue Anyway**.



4. When this window appears,
 - Select “No, not at this time”.
 - Click **Next**.



5. When this screen appears,
 - Select “Install the software automatically (recommended)”.
 - Click **Next**.



6. When the driver installation is complete, this screen will appear.
 - Click **Finish**.

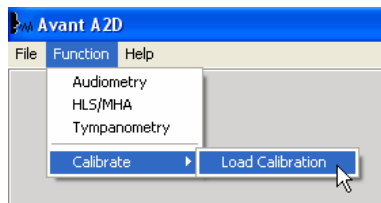
Exit the Setup screen when the driver installation is finished.

Loading Calibration Files

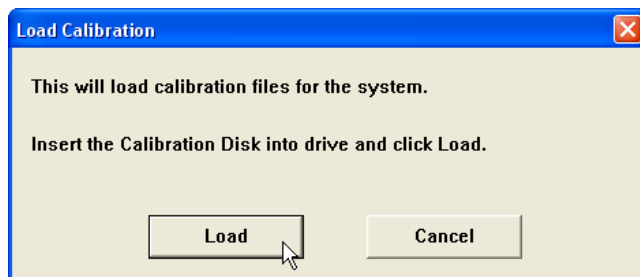


Each AVANT A²D audiometer is calibrated in compliance with the ANSI S3.6 standard. This calibration procedure results in a series of files that the A²D software reads to keep the hardware in calibration. These files are supplied on a CD bearing the same serial number as your A²D device.

The final step before using your AVANT A²D to evaluate hearing is to load these device-specific calibration files onto the computer used to control the A²D device.

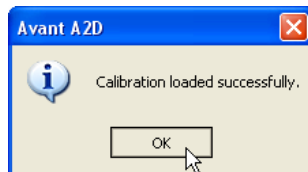


1. With the Calibration CD in the drive, open the AVANT A²D software and click
 - **Function**
 - **Calibrate**
 - **Load Calibration**



2. After a few seconds, the CD will "spin up" and this message will appear.

- **Click Load**



3. When the files are finished being loaded, this message will appear.
 - Click **OK** to complete loading the calibration.

Congratulations

Your AVANT A²D system is now set up and ready to use to perform comprehensive hearing evaluations. Please consult the AVANT A²D Training Manual and the Interactive Help within the software for instructions and procedures. The Training Manual is included in the AVANT A²D packaging in PDF format.

Limited Warranty

MedRx, Inc warrants the AVANT A²D System to be free from defects in material and workmanship for one year from the time of purchase. If this system fails to perform as specified during this period, the purchaser is responsible for calling MedRx at (888) 392-1234. The company's representative will advise the owner to either return specific components or the entire system to:

MedRx, Inc.
1200 Starkey Road #105
Largo, FL 33771

MedRx will repair or replace any defective parts, fully test the system and/or components and ship the system promptly back to the owner. There is no cost for this warranty service, provided the system is one year old or less and has not been misused, abused or damaged. Such damage includes, but is not limited to, dropping, exposure to excessive heat greater than 100°F and water/liquid damage.

Repair or replacement of the system as provided under this warranty is the sole and exclusive remedy of the purchaser. MedRx shall not be liable for any consequential or incidental damages, or for breach of any express or implied warranty. Except to the extent of applicable law, any implied warranty, merchantability or fitness of this product is limited to the duration of this warranty.

MedRx will, at its discretion, service and repair out of warranty components at the purchaser's request, charging for parts and labor as necessary.

The limited warranty is deemed void if software or hardware is installed on the AVANT A²D which is not pre-approved by MedRx, Inc. Approved software includes NOAH™ and HIMSA approved hearing aid manufacturer programming modules for fitting hearing aids.

MedRx, Inc is not responsible for problems resulting from installation of unapproved software or hardware. In the event of unapproved software or hardware installed on the system causing a conflict with the AVANT A²D functions, MedRx will service the problem for a fee to be determined at the time of service.

Consult your MedRx Technical support member for other alternatives for back up.