

# INSTALLATION MANUAL

# AVANT™ *A<sup>2</sup>D<sup>+</sup> Audiometer*



**MedRx**®



# Contents

Getting to Know Your AVANT™ A <sup>2</sup> D <sup>+</sup> .....	4
Software Installation .....	6
Driver Installation – Windows 7 .....	8
Driver Installation – Windows XP .....	11
Loading Calibration Files .....	13
EMC Precautions .....	14
Safety .....	17
Limited Warranty .....	18



#0086



[www.medrx-usa.com](http://www.medrx-usa.com)



1200 Starkey Rd., #105, Largo FL 33771 U.S.A.

Toll Free: (888) 392-1234 • (727) 584-9600

Fax: (727) 584-9602 • Email: [medrx@medrx-usa.com](mailto:medrx@medrx-usa.com)



**MedRx's Authorized Representative in Europe**

(Regulatory affairs only)

Emergo Europe, Molenstraat 15

2513 BH The Hague, The Netherlands

Tel: (31) (0) 70 345-8570 • Fax: (31) (0) 70 346-7299

# Getting to Know Your AVANT A<sup>2</sup>D<sup>+</sup> Audiometer

The AVANT A<sup>2</sup>D<sup>+</sup> represents a new era of ultra compact diagnostic audiometry for your office. Compact yet rugged, this PC-Based system is USB powered and supports ANSI and IEC audiometric tests. The following section of this manual will familiarize you with the physical features and accessories of the A<sup>2</sup>D<sup>+</sup> system.



Unit Powered On – No Ear Selected



Rear View

A unique feature of the AVANT A<sup>2</sup>D<sup>+</sup> Audiometer is the light panel which indicates which ear is selected in the software. When the unit is powered up, but no ear is selected, the light shines green as shown above. During testing, the light shines blue when the left ear is selected and red when the right is selected as shown below.



Left Ear Selected



Right Ear Selected

## Transducers and Accessories



**Insert Earphones**



**Headset Optional**



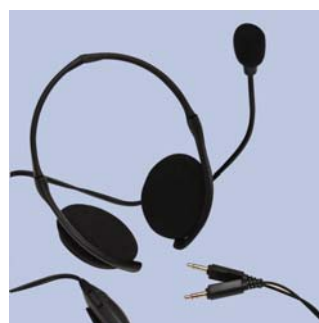
**Bone Conductor**



**Talkback Microphone**



**Patient Response Switch**



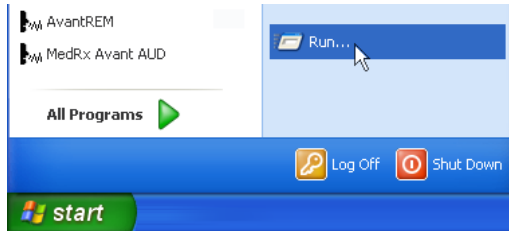
**Operator Mic and Monitor**



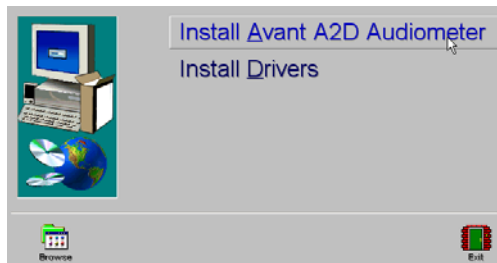
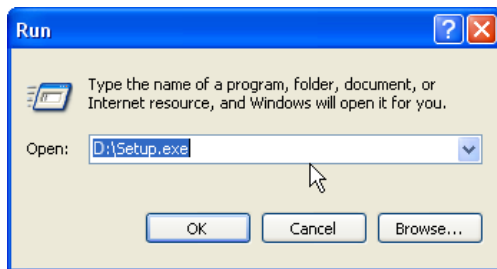
**USB Cable**

# Software Installation

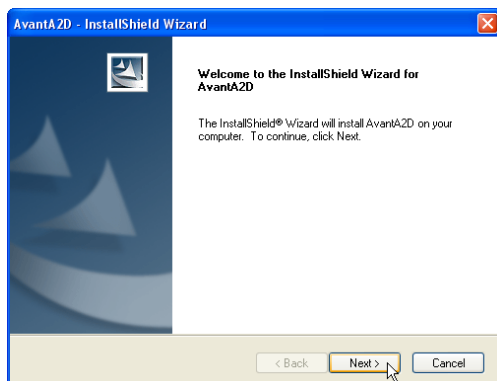
**Do Not Plug in the AVANT A<sup>2</sup>D<sup>+</sup> USB Cable yet!**



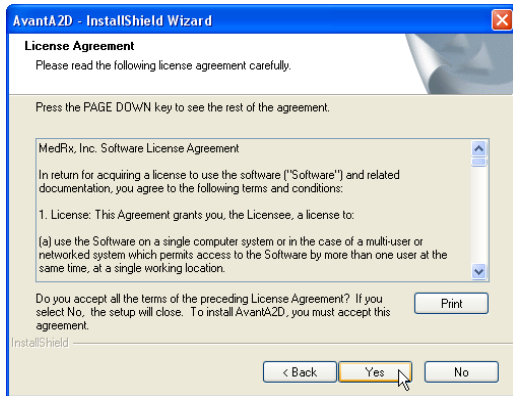
1. Insert the AVANT A<sup>2</sup>D<sup>+</sup> CD-ROM into the CD drive. Wait until the Setup program starts.
  - If the Setup program does not automatically start, click:
    - **Start.**
    - **Run.**
    - Type **D:\Setup.exe** in the window where 'D' is the drive letter assigned to the CD ROM drive on your computer.



2. On the Setup screen, choose **Install AVANT A2D Audiometer.**

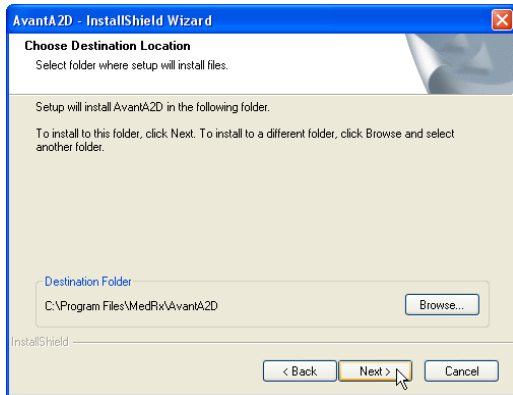


3. This is the Welcome screen.
  - To continue, Click **Next.**



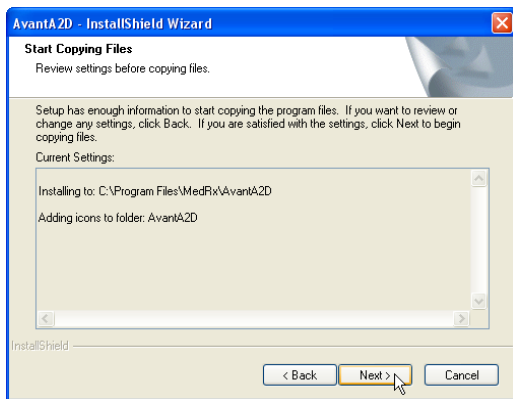
4. Read the Software License Agreement. This important document defines the acceptable usage of the A<sup>2</sup>D<sup>+</sup> Audiometer.

- After reading the Agreement, click **Yes**.



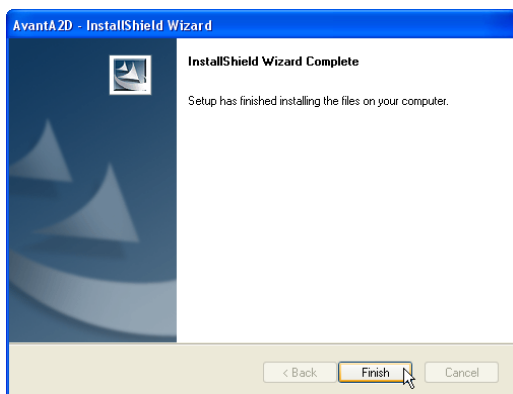
5. This screen indicates the location of the program files. The default location is recommended for most users. If necessary, this location can be changed.

- To continue with the default settings, click **Next**.
- To change the location of the files (advanced users or system administrators only) click **Browse**.



6. This screen summarizes the installation configuration.

- To continue, click **Next**.
- To make changes, click **Back**.



7. When the installation is complete, click **Finish**.

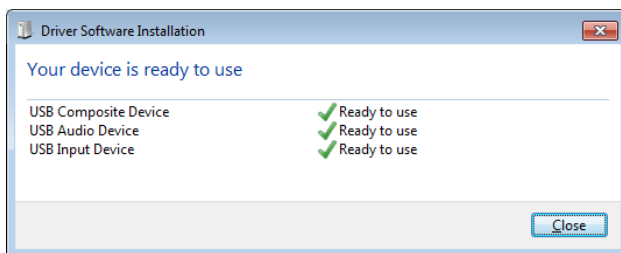
# Driver Installation - Windows 7

(see page 11 for Windows XP Driver Installation)

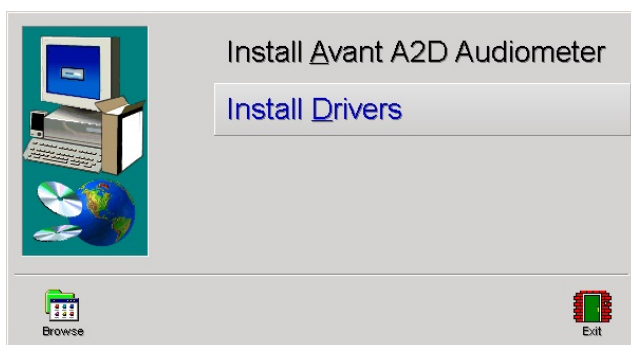


Your AVANT A2D Plus is USB powered.

1. Connect the USB cable from the AVANT A2D Plus™ to your computer as shown above.
2. Wait for the system to copy and install default drivers. During this process, you will see the following screen.

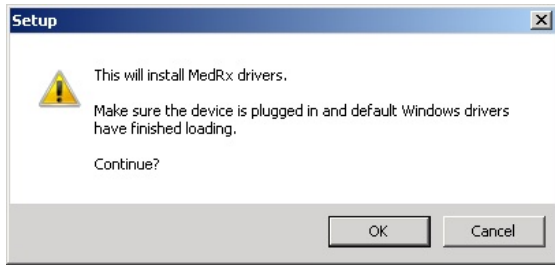


3. When this screen appears and all devices are "Ready to use", click **Close**.



4. On the Avant A2D Setup screen, click **Install Drivers**.

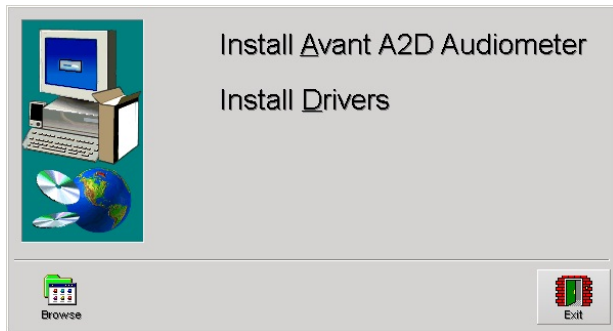




5. When this screen appears, click **Ok**.

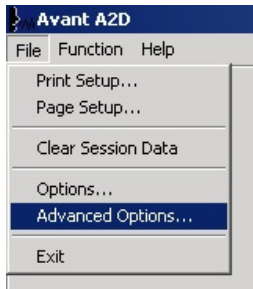


6. If this warning screen appears, click **Install this driver software anyway**.

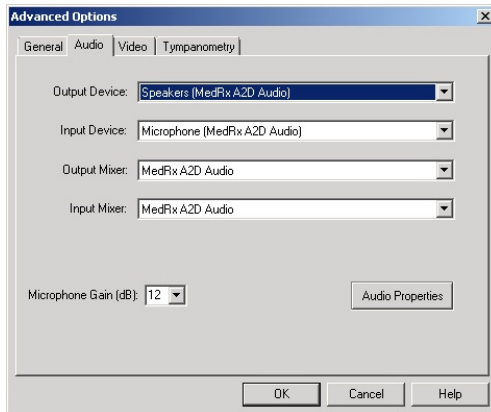


7. On Setup Window click **Exit**

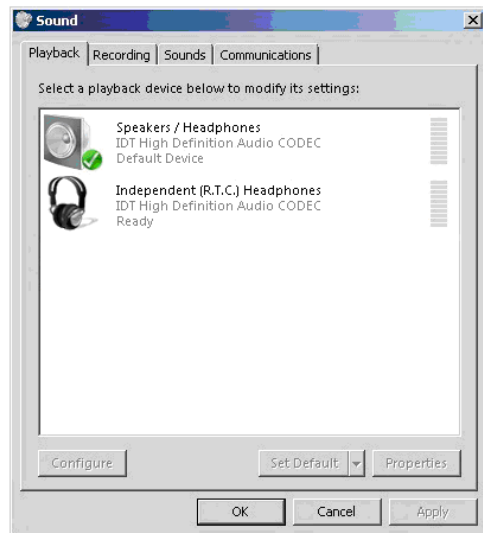
Next you need to set the Default Windows sound card settings. This will route all non-AVANT™ Windows sounds to the internal sound card of your computer. These sounds include event notifications such as new e-mail and error warnings as well as audio and video playback.



1. Launch the **AVANT A2D** software.
2. Open the **Advanced Options** from File menu as shown.



3. Open **Audio tab**.
4. When the audio properties are configured properly, during driver installation, the Audio Tab will appear like the image on the left. If not, use the pull-down lists to adjust the settings to match the image.
5. Click **Audio Properties**.



6. In Windows Sound control panel, make sure the MedRx Audio Device is not set as default. If it is default, change this by clicking on your system (non-MedRx) audio device and then choose Set Default.
- NOTE:** The internal sound card on your computer will likely not have the same name as this screen shot. Consult your computer's documentation for the name of the internal sound card and set this control accordingly.
7. Click **OK**.

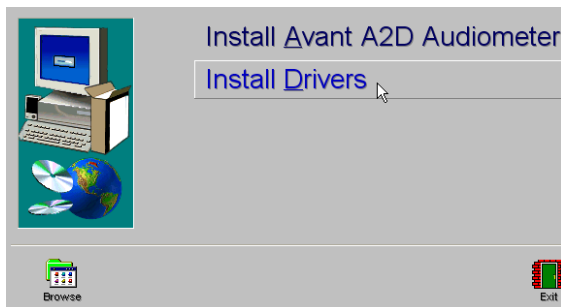
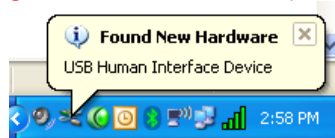
**Continue with: Page 13  
“Loading Calibration Files”**

# Driver Installation – Windows XP

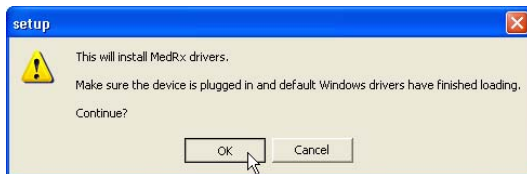
Connect the USB cable from the AVANT A<sup>2</sup>D<sup>+</sup> to your computer as shown below.



Wait for the system to copy and install default drivers. During this process, you will see the following prompts in your system tray (lower right corner of the screen).



1. After the Windows drivers have been installed, click **Install Drivers**.



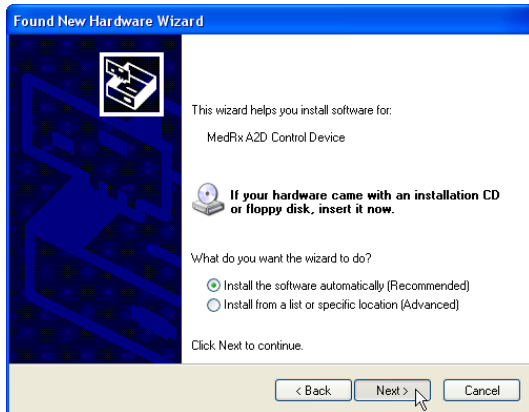
2. When this screen appears, click **OK**.



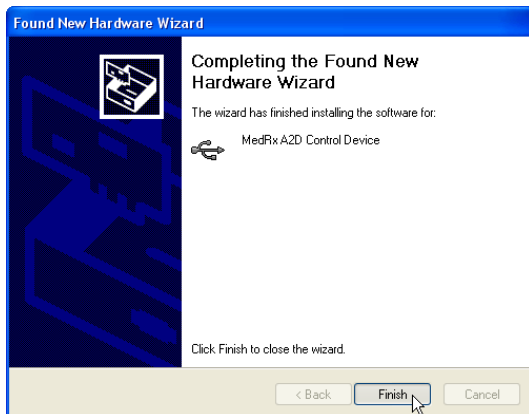
3. When the driver signature check screen appears, click **Continue Anyway**.



4. When this window appears,
  - Select “No, not at this time”.
  - Click **Next**.



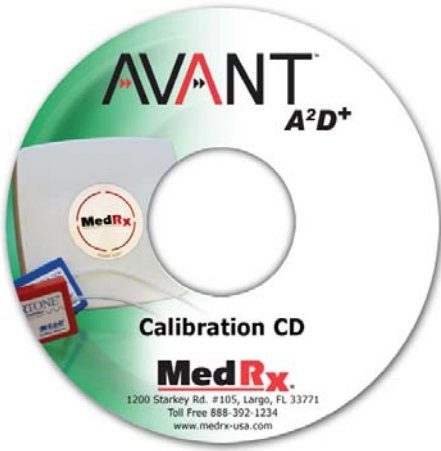
5. When this screen appears,
  - Select “Install the software automatically (recommended)”.
  - Click **Next**.



6. When the driver installation is complete, this screen will appear.
  - Click **Finish**.
7. **Exit the Setup screen** when the driver installation is finished.

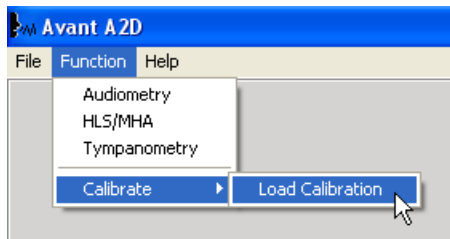
**Continue with: Page 13  
“Loading Calibration Files”**

# Loading Calibration Files

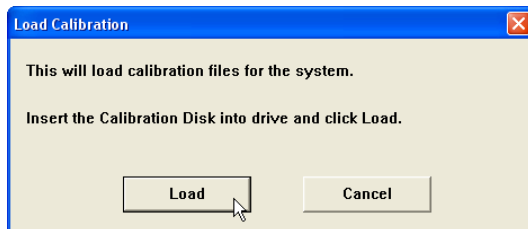


Each AVANT A<sup>2</sup>D<sup>+</sup> audiometer is calibrated in compliance with the ANSI S3.6 standard. This calibration procedure results in a series of files that the A<sup>2</sup>D<sup>+</sup> software reads to keep the hardware in calibration. These files are supplied on a CD bearing the same serial number as your A<sup>2</sup>D<sup>+</sup> device.

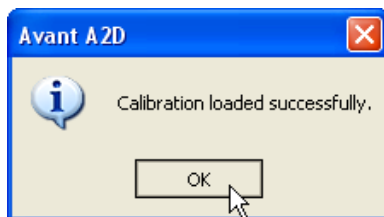
The final step before using your AVANT A<sup>2</sup>D<sup>+</sup> to evaluate hearing is to load these device-specific calibration files onto the computer used to control the A<sup>2</sup>D<sup>+</sup> device.



1. With the Calibration CD in the drive, open the AVANT A<sup>2</sup>D<sup>+</sup> software and click:
  - **Function.**
  - **Calibrate.**
  - **Load Calibration.**



2. After a few seconds, the CD will “spin up” and this message will appear.
  - Click **Load.**



3. When the files are finished being loaded, this message will appear:
  - Click **OK** to complete loading the calibration.

## EMC Precautions

The Avant A2D+ needs special precautions regarding EMC and needs to be installed and put into service according to the following EMC information.

List of all cables and maximum lengths of cables, transducers and accessories:


Transducer / Accessories	Maximum Cable length
USB Cable	2,9 meters
Insert Earphones	2,9 meters
All Headsets	2,9 meters
All Speakers	2,9 meters

## Warnings!

- The use of accessories, transducers and cables other than those specified, with the exception of transducers and cables sold by the manufacturer of the Avant A2D+ as replacement parts for internal components, may result in increased emissions or decreased immunity of the Avant A2D+.
- The Avant A2D+ should not be used adjacent to or stacked with other equipment and if adjacent or stacked use is necessary, the Avant A2D+ should be observed to verify normal operation in the configuration in which it will be used.
- The Avant A2D+ may be interfered with by other equipment, even if that other equipment complies with CISPR emission requirements.
- The Avant A2D+ does not have life supporting function
- Portable and mobile RF communications equipment can affect the Avant A2D+.

<b>Guidance and manufacturer's declaration – electromagnetic emissions</b>		
The Avant A2D+ is intended for use in electromagnetic environment specific below. The customer or the user of the Avant A2D+ should assure that it is used in such an environment.		
<b>Emission test</b>	<b>Compliance</b>	<b>Electromagnetic environment - guidance</b>
RF emissions CISPR 11	Group 1	The Avant A2D+ uses RF energy only for its internal function. Therefore, its RF emissions are very low and are not likely to cause any interference in nearby electronic equipment.
RF emissions CISPR 11	Class B	The Avant A2D+ is suitable for use in all establishments, including domestic establishments and those directly connected to the public low - voltage power supply network that supplies buildings used for domestic purposes.
Harmonic emissions IEC 61000-3-2	Non applicable	
Voltage fluctuations / flicker emissions IEC 61000-3-3	Non applicable	

<b>Guidance and manufacturer's declaration – electromagnetic immunity</b>			
The Avant A2D+ is intended for use in electromagnetic environment specific below. The customer or the user of the Avant A2D+ should assure that it is used in such an environment.			
<b>Immunity test</b>	<b>IEC 60601 test level</b>	<b>Compliance level</b>	<b>Electromagnetic environment - guidance</b>
Electrostatic discharge (ESD)  IEC 61000-4-2	+/- 6 kV contact +/- 8 kV air	+/- 6 kV contact +/- 8 kV air	Floors should be wood, concrete or ceramic tile. If floors are covered with synthetic material, the relative humidity should be at least 30%.
Electrical fast transient / burst IEC 61000-4-4	+/- 2 kV for power supply lines +/- 1 kV for input / output lines	+/- 2 kV for power supply lines +/- 1 kV for input / output lines	Mains power quality should be that of a typical commercial or hospital environment.
Power frequency (50/60 Hz) Magnetic field  IEC 61000-4-8	3 A/m	3 A/m	Power frequency magnetic fields should be at levels characteristic of a typical location in a typical commercial or hospital environment.

<b>Guidance and manufacturer's declaration – electromagnetic immunity</b>			
The Avant A2D+ is intended for use in electromagnetic environment specific below. The customer or the user of the Avant A2D+ should assure that it is used in such an environment.			
<b>Immunity test</b>	<b>IEC 60601- test level</b>	<b>Compliance level</b>	<b>Electromagnetic environment - guidance</b>
			Portable and mobile RF communications equipment should be used no closer to any part of the Avant A2D+, including cables, than the recommended separation distance calculated from the equation applicable to the frequency of the transmitter. <b>Recommended separation distance:</b>
Conducted RF IEC 61000-4-6	$3 V_{\text{eff}}$	$3 V_{\text{eff}}$	$d = 1,17 \times \sqrt{P}$
Radiated RF IEC 61000-4-3	$3 \text{ V/m}$ 80 MHz to 2,5 GHz	$3 \text{ V/m}$	$d = 1,17 \times \sqrt{P}$ 80 to 800 MHz  $d = 2,33 \times \sqrt{P}$ 800 MHz to 2,5 GHz
			Where P is the maximum output power rating of the transmitter in watts (W) according to the transmitter manufacturer and d is the recommended separation distance in meters (m). Field strengths from fixed RF transmitters, as determined by an electromagnetic site survey <sup>a</sup> , should be less than the compliance level in each frequency range <sup>b</sup> . Interference may occur in the vicinity of equipment marked with the following symbol:  


NOTE 1	At 80 MHz and 800 MHz, the higher frequency ranges applies.
NOTE 2	These guidelines may not apply in all situations. Electromagnetic propagation is affected by absorption and reflection from structures, objects and people.
a	Field strengths from fixed transmitters, such as base stations for radio (cellular/cordless) telephones and land mobile radios, amateur radio, AM and FM radio broadcast and TV broadcast cannot be predicted theoretically with accuracy. To assess the electromagnetic environment due to fixed RF transmitters, an electromagnetic site survey should be considered. If the measured field strength in the location in which the Avant A2D+ is used exceeds the applicable RF compliance level above, the Avant A2D+ should be observed to verify normal operation. If abnormal performance is observed, additional measures may be necessary, such as reorienting or relocating the Avant A2D+.
b	Over the frequency range 150 kHz to 80 MHz, field strengths should be less than 3 V/m.

Recommended separation distances between Portable and mobile RF communications equipment and the Avant A2D+			
The Avant A2D+ is intended to use in an electromagnetic environment in which radiated RF disturbances are controlled. The customer or the user of the Avant A2D+ can help prevent electromagnetic interference by maintaining a minimum distance between portable and mobile RF communications equipment (transmitters) and the Avant A2D+ as recommended below, according to the maximum output power of the communications equipment.			
Rated maximum output power of transmitter W	Separation distance according to frequency of transmitter meters		
	150 kHz to 80 MHz $d = 1,17 \times \sqrt{P}$	80 MHz to 800 MHz $d = 1,17 \times \sqrt{P}$	800 MHz to 2,5 GHz $d = 2,33 \times \sqrt{P}$
0,01	0,12	0,12	0,233
0,1	0,37	0,37	0,74
1	1,17	1,17	2,33
10	3,7	3,7	7,40
100	11,7	11,7	23,3
For transmitters rated at a maximum output power not listed above, the recommended separation distance d in meters (m) can be estimated using the equation applicable to the frequency of the transmitter, where P is the maximum output power rating of the transmitter in watts (W) according to the transmitter manufacturer.			
NOTE 1 At 80 MHz and 800 MHz the separation distance for the higher frequency range applies.			
NOTE 2 These guidelines may not apply in all situations. Electromagnetic propagation is affected by absorption and reflection from structures, objects and people.			



# Safety

Regarding electrical safety, this device is to be used only by professionals in the hearing healthcare industry.

It is Class II Medical Electrical (ME) equipment that is part of an ME system.  Power is supplied by the USB cable connected to a computer. An in-line optical isolator with medical power supply is recommended to achieve optimum safety. A medical grade computer is recommended and a medical grade isolation transformer will help minimize ground current. It is recommended that powered speakers are connected to an isolation transformer. The use environment should be between 10°C and 35°C, humidity within 30% to 90%. All components with patient contact are made of bio-compatible materials.

The colored lights on the device conform to the standard color designations for audiology. They signify that either the left (blue) channel is active or the right (red) channel is active, or no channel is active (green). The colors do not signify any dangerous or faulty condition. Mild soapy water is the preferred cleaning solution.

All repairs should be sent to Medrx for evaluation and / or repair.

Symbols that may be used:



Read the instruction manuals for safe usage of the device. (operating instructions)



or **SN** Indicates that the device serial number will follow.



Type B applied part.



Manufacturer (Medrx)



Authorized Representative in Europe

# Congratulations

Your MedRx system is now set up and ready for use. Please consult the Training Manual and the Interactive Help Files within the software for instructions and procedures. The Training Manual is available in PDF format on CD and at [www.medrx-usa.com](http://www.medrx-usa.com) in our Download Section.

## Limited Warranty

MedRx, Inc warrants this product to be free from defects in material and workmanship for one year from the time of purchase. If this system fails to perform as specified during this period, the purchaser is responsible for calling MedRx at (888) 392-1234 or (727) 584-9600. The company's representative will advise the owner to either return specific components or the entire system to:

**MedRx, Inc.**  
**1200 Starkey Road #105**  
**Largo, FL 33771 USA**

MedRx will repair or replace any defective devices, fully test the system and/or components and ship the system promptly back to the owner. There is no cost for the repair or return shipping, provided the system is one year old or less and has not been misused, abused or damaged. Such damage includes, but is not limited to, dropping, exposure to excessive heat greater than 100°F and water/liquid damage.

Repair or replacement of the system as provided under this warranty is the sole and exclusive remedy of the purchaser. MedRx shall not be liable for any consequential or incidental damages or for breach of any express or implied warranty. Except to the extent of applicable law, any implied warranty, merchantability or fitness of this product is limited to the duration of this warranty.

MedRx will, at its discretion, service and repair out of warranty products at the purchaser's request, charging for parts and labor as necessary.

The limited warranty is deemed void if software or hardware is installed on this product which is not pre-approved by MedRx, Inc. Approved software includes NOAH™ and HIMSA approved hearing aid manufacturer programming modules for fitting hearing aids.

MedRx, Inc is not responsible for problems resulting from installation of unapproved software or hardware. In the event of unapproved software or hardware installed on the system causing a conflict, MedRx will service the product for a fee to be determined at the time of service.

Any extension of this warranty past the initial one-year warranty is subject to the following (where applicable).

1. A \$300 deductible per repair.
2. Extended warranty does not include cables, connectors or peripherals.
3. Extended warranty of the Video Otoscope covers optics only.





#0086

**MedRx**

[www.medrx-usa.com](http://www.medrx-usa.com)



1200 Starkey Rd., #105, Largo FL 33771 U.S.A.

Toll Free: (888) 392-1234 • (727) 584-9600

Fax: (727) 584-9602 • Email: [medrx@medrx-usa.com](mailto:medrx@medrx-usa.com)



**MedRx's Authorized Representative in Europe**

(Regulatory affairs only)

Emergo Europe, Molenstraat 15

2513 BH The Hague, The Netherlands

Tel: (31) (0) 70 345-8570 • Fax: (31) (0) 70 346-7299