

TRAINING MANUAL

AVANT[™] Stealth AUDIOMETER



Clinical Audiometer

MedRx[®]

This Page Left Intentionally Blank

Contents

Introduction.....	4
AVANT™ Audiometer Software Overview	5
AVANT™ Audiometer Software Options	6
Preparing for Testing	9
Placing The Earphones On The Patient	10
Placing the Bone Conductor	11
Performing Audiometric Testing	12
Pure Tone Audiometry.....	13
Speech Audiometry	15
Hearing Loss Simulator	18
Master Hearing Aid	18
Printing	20
Limited Warranty	21



#0086



www.medrx-usa.com



1200 Starkey Rd., #105, Largo FL 33771 U.S.A.

Toll Free: (888) 392-1234 • (727) 584-9600

Fax: (727) 584-9602 • Email: medrx@medrx-usa.com



MedRx's Authorized Representative in Europe

(Regulatory affairs only)

Emergo Europe, Molenstraat 15

2513 BH The Hague, The Netherlands

Introduction

The AVANT Stealth Audiometer represents a new era of PC-based diagnostic audiometry for your office. This PC-Based system supports current ANSI and IEC audiometric tests. This manual assumes that the system hardware and software are installed and working properly. Please refer to the *MedRx AVANT Stealth Audiometer Installation Manual* for assistance. The *AVANT Stealth Audiometer Installation Manual* is included in the original AVANT Stealth Audiometer packaging in both printed and PDF formats.

The scope of this manual is to get you “up and running” with the AVANT Stealth Audiometer System. Please consult the interactive Help System within the software for more detailed information of features and functionality. To access this tool, press the F1 key at any time, or click the Help icon or the menu bar with your mouse.

The AVANT Audiometer Software

General Overview

The AVANT Audiometer software can run stand-alone or through the NOAH™ System or the TIMS® Office System.

Launching the Software

Stand Alone



1. Double click the **AVANT Audiometer** shortcut on your Windows Desktop.

NOAH and TIMS

1. Launch NOAH.
2. In NOAH 4:
 - Click **AVANT Audiometer** icon on the toolbar.

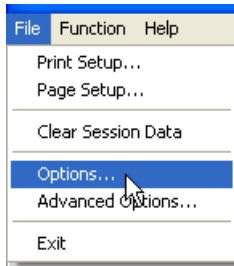


Software Options

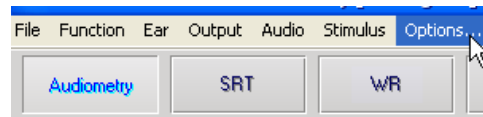
Basic Options

Several option screens are available which allow the user to customize the AVANT Audiometer Software to meet their needs.

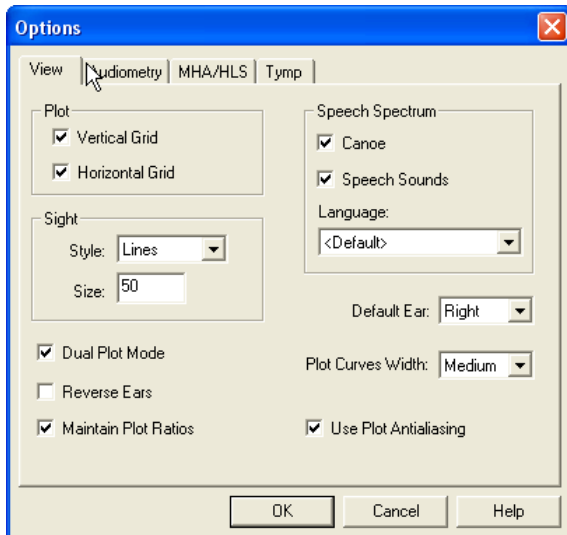
Access these options from the File Menu on the AVANT Audiometer Main Screen as shown below.



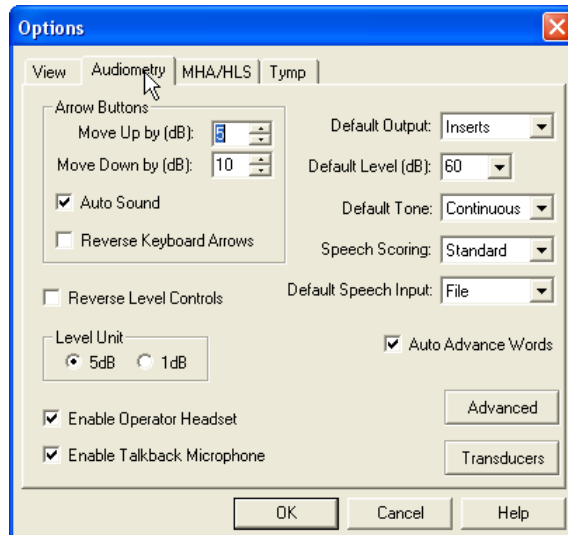
The Options may also be accessed from the Audio screen by clicking Options on the menu as shown below.



The screen shots below detail the Basic Options available in the AVANT Audiometer software.

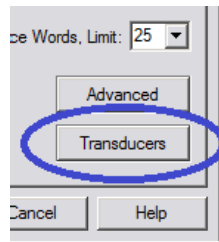


The View tab allows you to set the default appearance of the test screen.

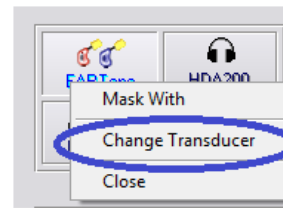


The Audiometry tab sets the look and behavior of the AVANT Stealth Audiometer.

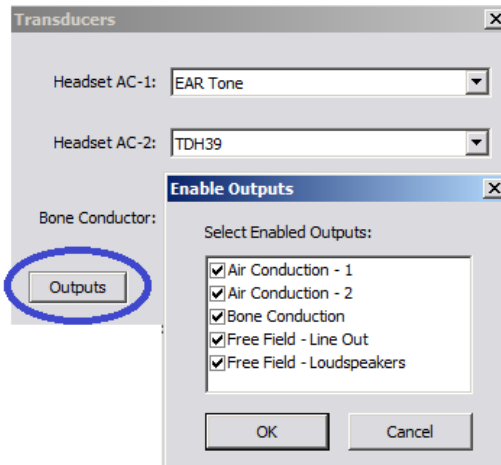
Option 1: On the Audiometry Options screen click **Transducers** to assign specific transducers to the audiometer outputs.



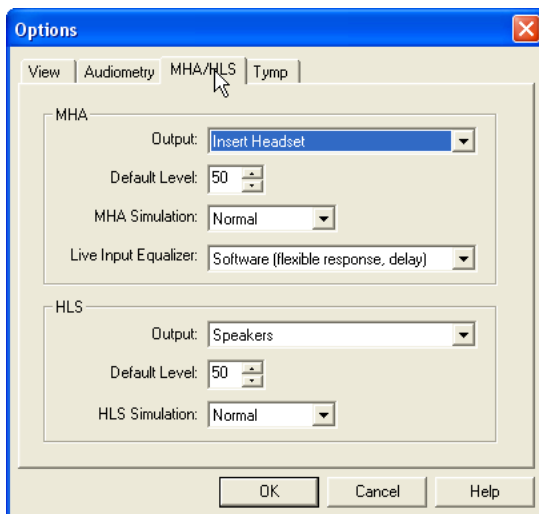
Option 2: You can change transducers by **Right-Clicking** on any transducer icon on the Audiometry screen.



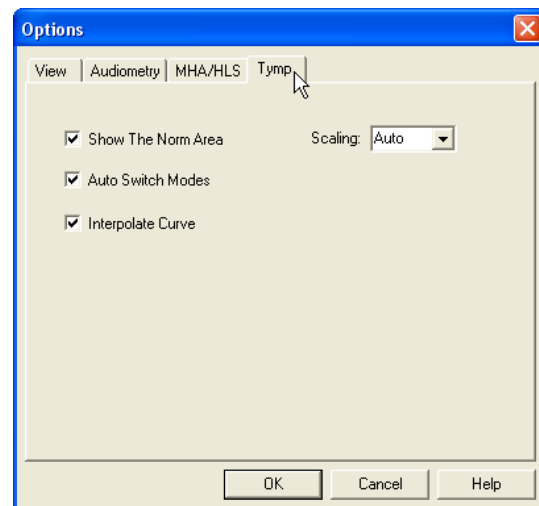
The Transducers dialog box will then appear. Select the appropriate transducer for each output.



To add or remove outputs, click **Outputs** to enable or disable transducer buttons on the Audiometry screen



The MHA/HLS tab sets the default look and behavior of the Master Hearing Aid and Hearing Loss Simulator.

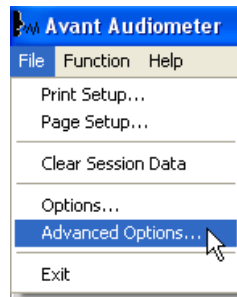


If your system has a Tympanometer connected, this tab will assist in configuring the look of the display.

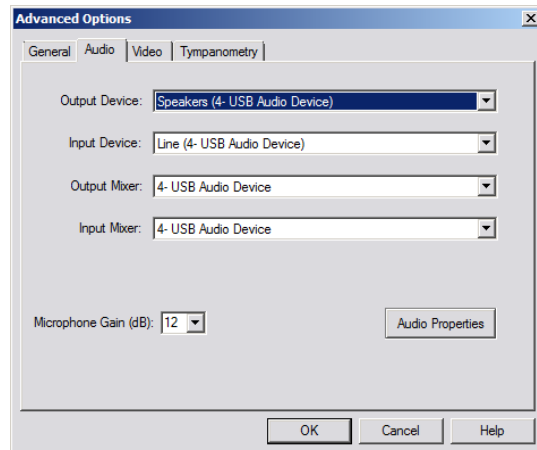
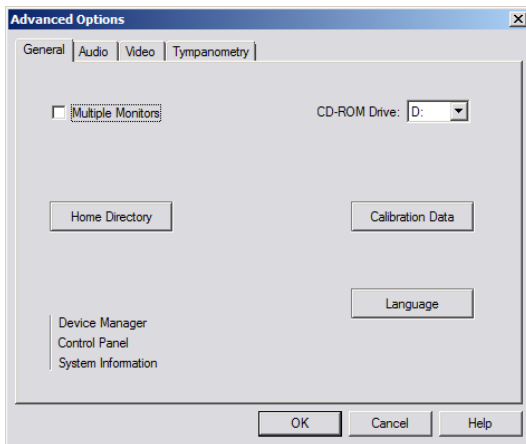
NOTE: Remember, that more information is always available in the Interactive Help System by clicking the Help Icon or pressing the F1 key.

Advanced Options

The Advanced Options screen allows you to configure your system to meet your individual clinical needs. It also provides MedRx Technical Support with tools for helping you troubleshoot technical issues. Access this screen from the File Menu on the AVANT Audiometer Main Screen as shown to the right.

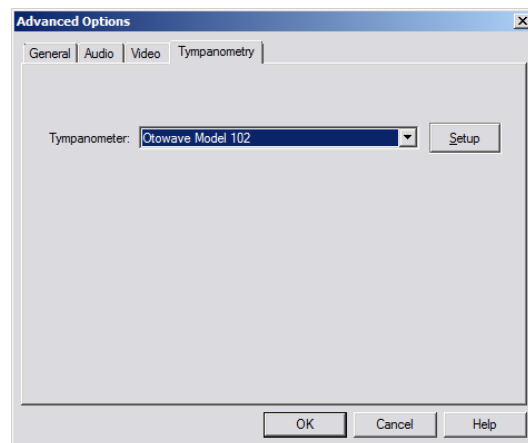
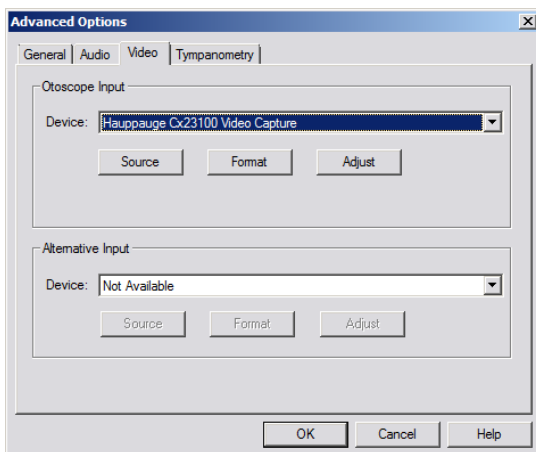


The key features of each tab are described below. For more in-depth information, consult the interactive Help system within the software by pressing the F1 key or clicking the Help icon.



The General Tab configures the overall AVANT Stealth Audiometer behavior with respect to other Windows programs, specifically NOAH.

Use the Audio Tab to select the proper audio device for your AVANT Stealth Audiometer. This tab also provides access to the Windows Audio controls. Note: The device settings may vary with different computers. Consult technical support before changing.



If your system has a Video Otoscope, the Video Tab allows you to select the appropriate device driver.

If your system has a Tympanometer connected, use this tab to identify it and ensure the driver and software that control it are correctly installed.

Preparing for Testing

Connecting the Peripherals

After you install the software for your AVANT Stealth Audiometer you need to connect the rest of the peripherals before testing a patient. (See the AVANT Stealth Audiometer Installation Manual).

Using the pictures below, locate each of the accessories and plug them into the labeled jacks on your Stealth.

The External Power Supply is required to utilize the built-in 2x20 Watt Amplifiers and the High Frequency Option.



IP30 Insert Earphones (Standard)



Insert Earphones (Optional)



TDH-39 or DD45 Earphones



HDA 200 (Optional) High Frequency



Operator Mic & Monitor



Speakers (Optional)



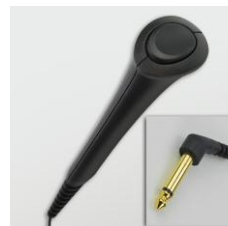
Bone Conductor



Power Supply



USB Cable



Patient Response Switch



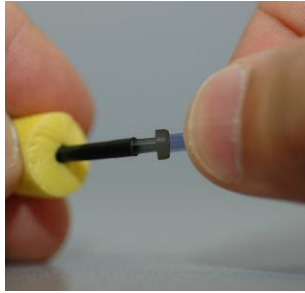
Talkback Mic

Placing the Earphones on the Patient

The AVANT Stealth Audiometer standard configuration includes IP30 Insert Earphones. 3A Insert Earphones, TDH 39 earphones are also available by request. The figures below illustrate how to properly place these earphones on the patient.

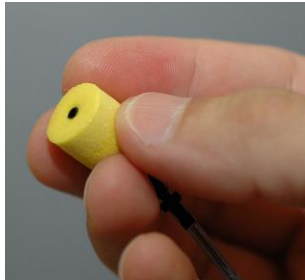
Insert Earphones

IMPORTANT: The foam tips used for the insert earphones are for **SINGLE PATIENT USE ONLY**. Do not attempt to wash and re-use them.



1. Place a new set of foam tips on the earphone tubes as shown. These tips are designed for single patient use and should not be washed and reused.

- **NOTE:** When removing foam tips after use, be sure the clear plastic tubing nipple remains attached to the long earphone tube.

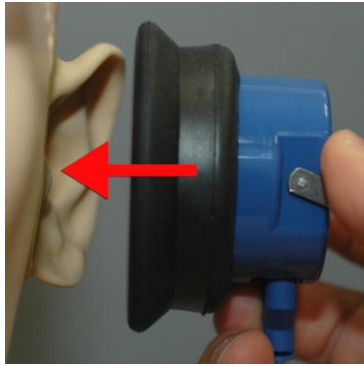


2. Carefully compress the tip between your fingers to allow it to fit into the patient's ear canal as shown. Do not roll the tip between your fingers.



3. Pull up and back on the patient's pinna to straighten the ear canal.
4. Place the compressed foam tip deep within the ear canal.
5. When properly placed, the outer surface of the insert tip will be flush with the opening of the ear canal as shown.

TDH 39 Earphones



1. Place the earphones on the patient's head so the center of the earphone is directly over the opening of the ear canal.
2. Adjust the headband so the earphones remain in place, but be careful not to make it so tight as to cause patient discomfort.

Optional Extended High Frequency Earphones (HDA 200)

Note: The HDA 200 Earphones are part of an upgrade option for the AVANT Stealth Audiometer. If you need to test frequencies beyond 8000 Hz, you must notify MedRx. This option carries a price differential which will be detailed at the time of order.



1. Place the earphones on the patient's head so the center of the earphone is directly over the opening of the ear canal.
2. Adjust the headband so the earphones remain in place, but be careful not to make it so tight as to cause patient discomfort.

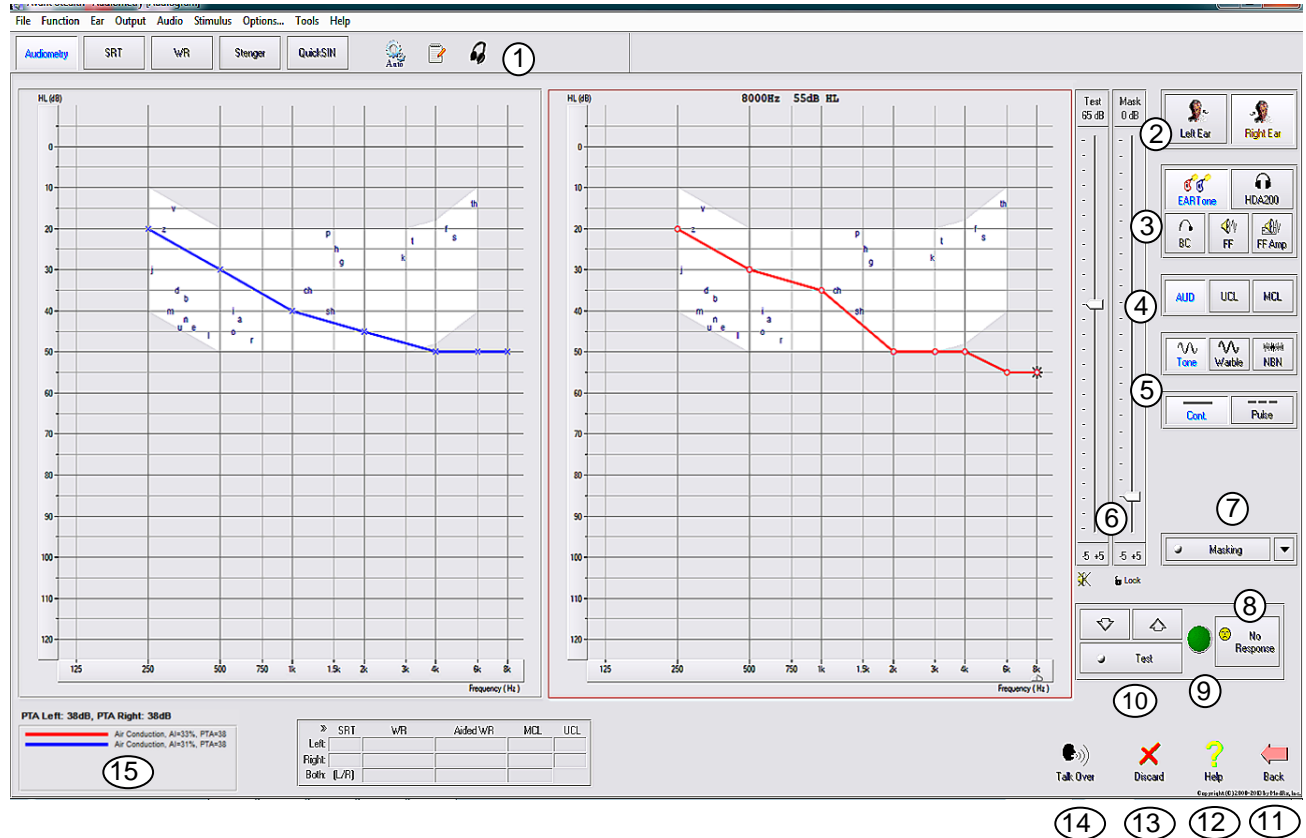
Placing the Bone Conductor



1. Locate the mastoid process behind the pinna. This is a bony shelf just behind where the ear meets the head.
2. Carefully place the bone conductor on the mastoid process and hold it in place.
3. Place the headband over the head to the opposite temple.
4. Carefully and slowly loosen your grip to check if the bone vibrator and headband will stay in place.
5. If either moves, reposition until both the headband and bone vibrator are secure.

Performing Audiometric Testing

From the AVANT Audiometer home screen, click on the “Audiometry” tab to access the audiometry function. The screen shot below shows the controls which are available from the AVANT Audiometer main window. The sections of the manual that follow explain how to use these tools to perform hearing evaluations using your AVANT Stealth Audiometer.



1. Test selection tool bar
2. Ear selection
3. Output selectors
4. Test Type Selectors
5. Tone Type Selectors
6. Output Level Potentiometers
7. Masking interrupter and routing selector
8. No Response button
9. Patient Response Indicator
10. Test Interrupter
11. Back To The Main Screen
12. Help
13. Discard Current Measurement
14. Talk Over
15. Legend

To exit the program, click on the “Back” button then click “Exit”.


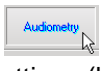



Pure Tone Audiometry

Pure Tone Audiometry measures the patient's peripheral hearing sensitivity, or the softest levels they can hear pure tones at a variety of frequencies. These thresholds are plotted on a standard graph called an audiogram. The AVANT Audiometer software controls the hardware, stores the data (if running within NOAH or TIMS) and prints a standard audiogram report. Pure tone Audiometry can be performed via earphones, free field speakers (Air Conduction) or a Bone Conductor (Bone Conduction). Warble settings are adjustable by the Operator. The Sound Field must be calibrated on-site, using 4 ohm speakers connected to the Free Field connectors.

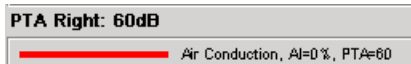
Pretesting Procedures/Recommendations:

- Before performing audiometry, careful inspection of the ear canal should be performed. This is best done with Video Otoscopy. After ensuring the ear canal is clear, place the appropriate transducer on the patient as shown on pages 10 & 11.

Pure Tone Audiometry via Earphones (IP30 Inserts, 3A Inserts or TDH 39)

1. From the Main Window, click the  button on the right side menu bar.
2. By default, the  button will be selected once you enter the main Audiometry Screen. Other default settings (based on typical clinical practice and procedures) are:
 - Right Ear
 - AC (Air Conduction)
 - Tone Stimulus
 - Continuous Tone
3. Instruct the patient that they will hear several very quiet (soft) tones (beeps) and that they should signal (raise their hand, press the patient response button, etc.) as soon as they hear it. It is helpful to also say "even if it seems very far away".
4. Begin at 1000 Hz in the Right ear (unless the patient reports better hearing in the left ear).
5. Present a tone at 60 dB by pressing and holding the space bar or clicking and holding the  button.
6. If the patient does not hear the tone (does not signal), raise the level 5 dB using the up arrow on your keyboard or by clicking the  button and present again.
7. Repeat step 6 until the patient signals that they hear the tone.
8. When the patient signals they hear the tone, decrease the level by 10 dB using the down arrow on your keyboard or by clicking the  button and present the tone again.
9. Repeat steps 6 through 8 until the patient responds to a tone at the same level 2 times with the level ascending and establishing a threshold.
10. Using the right arrow key, change the test frequency to 2000 Hz and repeat steps 5 through 9 to establish the threshold at 2000 Hz. The threshold at the previous frequency is recorded when the test frequency is changed.
 - NOTE: If the threshold at 2000 Hz is more than 20 dB different (less than or greater than) the threshold at 1000 Hz, repeat steps 5 through 9 at 1500 Hz (the "half octave" between 1000 Hz and 2000 Hz).
11. Repeat steps 5 through 9 for 4000 Hz, 8000 Hz, 500 Hz and 250 Hz. Testing half octaves as needed.
12. Repeat steps 4 through 11 in the opposite ear.

NOTE: The software automatically calculates the 3-frequency Pure Tone Average (PTA) which is displayed above and inside the legend as follows:

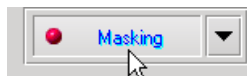


Pure Tone Audiometry via the Bone Conductor

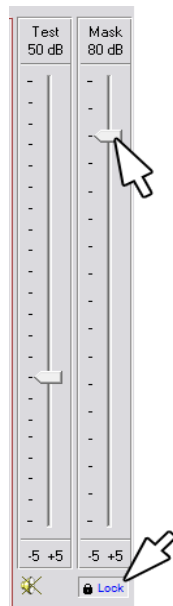
1. Following the instructions on page 11, place the Bone Conductor on the mastoid process behind the ear with better air conduction thresholds as measured above. If the thresholds are equal, place the Bone Conductor on the mastoid process behind the right ear.
2. Establish pure tone bone conduction thresholds as described above for 1000 Hz, 2000 Hz, 4000 Hz, 500 Hz and 250 Hz.
3. If the Bone Conduction (BC) threshold at a given frequency is less (better) than the Air Conduction (AC) threshold by 15 dB or more, you must confirm the threshold by performing masking. Masking is always recommended for frequencies above 2000 Hz to achieve valid results.
4. Repeat steps 1-3 for opposite ear.

Masking for Pure Tone Audiometry

There are several accepted methods for masking. This manual will not promote one over another, however, to use the masking function on the AVANT Stealth Audiometer, follow the steps below.

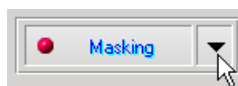


1. Click the Masking button. The red light will appear indicating that the masking is on.



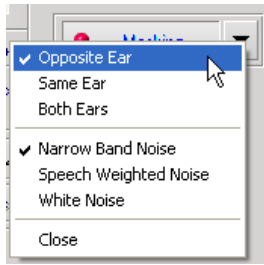
2. Use your mouse to adjust the Masking Level slider shown on the left to the appropriate level based on your preferred method of masking.

3. If you wish to maintain the balance of signal and masking (for example, masking always 30 dB above the signal), click the Lock button after setting the masking and signal levels.



4. The default for pure tone audiometry is to deliver narrow band masking to the ear opposite the test ear. If you wish to use a different stimulus, or route the masking to the same or both ears, click on the arrow to the right of the Masking On button.

5. Use your mouse to select the new masking type and routing for



your specific application.

6. When you are finished making changes to the Masking, click Close.

Optional High Frequency Audiometry

The AVANT Stealth Audiometer is available with the option to perform extended range high frequency pure tone audiometry. This is used clinically to evaluate noise induced hearing loss, ototoxicity and tinnitus. High frequency testing uses the same procedure as described on page 13 for pure tone audiometry.



To start High Frequency audiometry, select a transducer that supports high frequencies, such as the HDA 200.

The High Frequency control will appear on the right panel and will allow choosing frequency ranges to be shown on the plot. The power supply must be connected to activate the high frequency control or when using the free field amplifier.

NOTE: Extended High Frequency Audiometry is an upgrade option for the AVANT Stealth Audiometer. If the high frequency control selectors do not appear on the right panel and if you need to test frequencies beyond 8000 Hz, you must notify MedRx. This option carries a price differential which will be detailed at the time of order.

Speech Audiometry

Speech audiometry evaluates how well the patient can hear and understand speech. The typical test battery includes tests of speech thresholds and tests of speech discrimination.

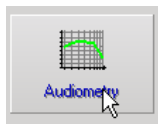
The sections below detail how to perform these tests on the AVANT Stealth Audiometer.

Speech Reception Threshold (SRT)

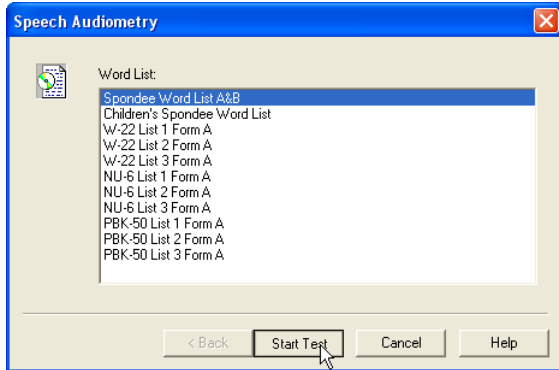
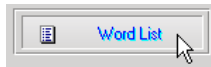
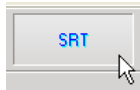
The Speech Reception Threshold (SRT) is defined as the lowest dB level at which the patient can repeat Spondee words with at least 50% accuracy. Spondee words are two syllable words with equal vocal emphasis on each syllable such as “baseball” or “hotdog”.

Instruct the patient that they will hear a series of two-syllable words that will get quieter as the test progresses. They are to repeat the words as best they can, even if they sound very far away. If they are not sure of a word, they should take a guess.

SRT is typically within +/- 5 dB of the patient's PTA which is displayed on the lower left corner of the screen. Set the level of the test signal to “a level of familiarization”, done typically 20 dB above the PTA.



1. From the AVANT Audiometer main screen, click the **Audiometry** button.



2. Click the **SRT** button located on the toolbar on the top of the screen.
3. Select the appropriate test **ear** icon.
4. Click the **Word List** button.
5. Select **Spondee Word Lists A&B** from the list.
6. Click **Start Test**.
7. Click the **Play** button or press the F9 key to present a word. The word will play through the chosen transducer as well as display on the screen.
8. If the patient correctly repeats the word, click the **Correct** icon or press F7.
9. If the patient incorrectly repeats the word, click the **Incorrect** icon or press F8.

Note that the score is calculated and displayed automatically in the bottom right corner of the screen.

If the patient exceeds a 50% score at a given presentation level, stop the test and decrease the level by 10 dB and repeat the steps above.

If the patient fails to achieve a 50% score after 6 words at a given level, stop the test, raise the level 5 dB and repeat the steps above.

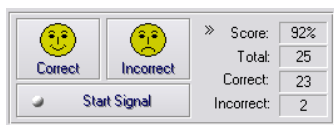
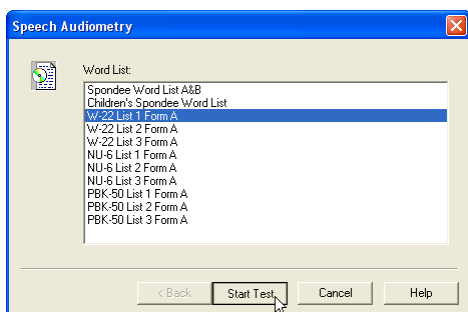
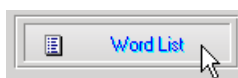
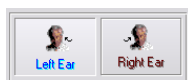
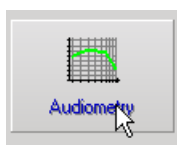
When the patient scores 50% at a given level, the test is complete. The software automatically plots the score on the SRT graph.

Repeat test on opposite ear.

Word Recognition (WR)

Speech Discrimination or Word Recognition (WR) is a discrimination, type test using speech as the stimulus. WR testing measures the percentage of mono-syllable words repeated correctly from a list. Unlike the SRT test, the WR test is performed at a fixed intensity (dB) level. WR is typically performed at a patient's speech MCL. If MCL is not performed, system default options include, PTA, PTA+20, PTA+30 and PTA+40.

Before beginning the test, instruct the patient that they will hear a series of one-syllable words. They are to repeat the words as best they can. If they are not sure of a word, they should take a guess.



1. From the AVANT Audiometer main screen, click the **Audiometry** button.
2. Click the **WR** button located on the toolbar on the top of the screen.
3. Select the appropriate test **ear** icon.
4. Click the **Word List** button.
5. Select the desired Word List from the list. The W-22 or NU-6 lists are good choices for most adult patients. When testing children, the PBK lists should be used.
6. Click **Start Test**.
7. Click the **Play** button or press the F9 key to present a word. The word will play through the chosen transducer as well as display on the screen.
8. If the patient correctly repeats the word, click the **Correct** icon or press F7.
9. If the patient incorrectly repeats the word, click the **Incorrect** icon or press F8.

Note that the score is calculated and displayed automatically. The test is complete when all words in the list have been presented. The software automatically plots the score on the WR graph.

Repeat test on opposite ear.

Hearing Loss Simulator

The **Hearing Loss Simulator (HLS)** demonstrates the effect of the client's hearing loss for the significant third party. The program attenuates an input signal to simulate the audiogram. The third party listens to the free field speakers. The third party can hear how their own voice is distorted by the hearing loss when the Record input option is used.

The Hearing Loss Simulator requires the client's Audiogram data. This data can be manually entered in the Audio screen of this or any other task.

How to perform the Hearing Loss Simulator task

- Select the HLS tab on the toolbar.
- Enter the Audiogram values manually if the data is not automatically imported to this screen.
- Select the input signal type: *Mic*, *File* or *Record*. Select the track and the *Play* button on the control panel. See below for instructions on how to use the Record option.
- The HLS output is directed to the free field loudspeakers.
- Select *Normal* to play the input signal as a person with normal hearing would perceive it. Select *Simulated* to turn on the simulation of the client's hearing loss. Toggle between these selections as necessary.
- The **Reset** option restores the audiogram to the original state. Use this option if you have modified the audiogram but want to undo the changes. The changes to the Audiogram that are made on the HLS screen are temporary and will not affect the client's original audiometry record.
- A volume control adjustment bar allows for manual adjustment of the output level of the free field speakers.
- To stop the playback, select the *Stop* button on the player.

Note: It is recommended you use a variety of tracks from the list to demonstrate the hearing loss.

Record Input Option

This option allows recording and playing back of the voice of the third party.

Master Hearing Aid

Master Hearing Aid (MHA) is an alternative to using a stock hearing aid to demonstrate the benefits of amplification to an inexperienced user. The system applies the fitting rules by default to the patient's audiogram and simulates a hearing aid. The patient listens to this signal through the headphones. Options for editing the gain applied to the audiogram are provided.

About the Master Hearing Aid Display

The Master Hearing Aid screen displays a graph with dB Gain on the vertical axis and Frequency in Hz on the horizontal axis. The plot on the graph represents the gain applied to the patient's Audiogram. The NAL-RP is applied by default. A new rule can be selected from the list on the right side of the display. A volume adjustment bar allows for manual adjustment of the output level. The control panel on the right of the display provides options for input signal source and the task icons for Normal and Simulate.

The Master Hearing Aid applies gain separately for each ear. If audiogram values are entered for the left and right ear, the selected fitting rules will be applied to each ear separately. Different rules may be entered for different ears (i.e. NAL-RP for left ear and BERGER for right ear). If an audiogram is entered only for one ear, the gain will not be adjusted for the opposite ear and the sound for that ear will be normal.

If **Binaural** mode is selected, the sound will be heard from both channels (left and right). If **Monaural** mode is selected, the sound will be heard only from the channel corresponding to the active ear when the channel for the opposite ear will be muted.

Input signal

Live voice (microphone) allows you to use the talk-over microphone for live speech input to the inserts. The clinician or significant third party can speak into the microphone for this activity. Note: there is a processing delay between the input and playback. Make sure that the client cannot hear the voice directly but only through the headset. If this is not possible, use the Recorder (describer below) to simulate speech input.

File allows the user to play sound files. The program supports MP3 and WAV files and comes with pre-set *MedRx Sounds Sensations* sound files. After the option is activated, use the player panel to control the playback.

CD allows the user to play music CDs. After the option is activated, use the player panel to control the playback.

Record input mode allows the clinician or third party to record a sample of their speech which can then be replayed for repeat comparisons under different amplification conditions for the patient. Refer to the interactive Help system by pressing F1 or clicking the Help icon to learn more about the recorder.

How to use the Master Hearing Aid:

1. Select the *Master Hearing Aid (MHA)* icon from the main screen.
2. Enter the Audiogram values manually if the data is not automatically imported to this screen.
3. Select the input signal type: *File, CD, Mic, or Record*.
4. Select *Monaural* or *Binaural*.
5. Select the *Normal* icon, which will send the input signal through to the inserts without modification. The patient is listening to the signal without any amplification benefit. Select the *Simulate* icon to modify the input signal according to the selected rule. This selection allows the patient to hear the benefits of amplification. Toggle between these two selections as necessary.
6. If the simulated frequency response needs to be adjusted, based on feedback from the patient, manually edit the response by clicking on the gain curve at the desired frequency and new gain level. The gain curve of the selected test ear on the control panel can be edited. To edit the other ear, click the appropriate test ear icon on the control panel first.

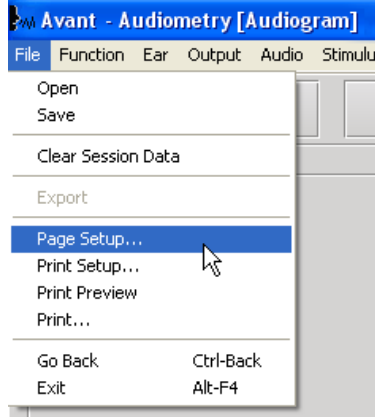
Hint: Use the *track return* icon on the player control panel to replay one track continuously.



The **Reset** option restores the rule to the original state. Use this option if you have modified the rule but want to undo the changes.

Printing

Printing within the AVANT Audiometer software is very simple.



From the File menu, click one of the following options:

Page Setup – Allows you to set margin sizes and the default text header for your reports.

Print Setup – selects the printer you want the report to be sent to.

Print Preview – Shows you what your report will look like before you print it.

Print – Sends the report to the printer. This option opens the Windows Print dialog which allows the user to select any installed printer and modify the properties (quality, number of copies, etc.) for the print job.

Limited Warranty

MedRx, Inc. warrants this product to be free from defects in material and workmanship for one year from the time of purchase. If this system fails to perform as specified during this period, the purchaser is responsible for calling MedRx at (888) 392-1234 or (727) 584-9600. The company's representative will advise the owner to either return specific components or the entire system to:

MedRx, Inc.
1200 Starkey Road #105
Largo, FL 33771 USA

MedRx will repair or replace any defective devices, fully test the system and/or components and ship the system promptly back to the owner. There is no cost for the repair or return shipping, provided the system is one year old or less and has not been misused, abused or damaged. Such damage includes, but is not limited to, dropping, exposure to excessive heat greater than 100°F and water/liquid damage.

Repair or replacement of the system as provided under this warranty is the sole and exclusive remedy of the purchaser. MedRx shall not be liable for any consequential or incidental damages or for breach of any express or implied warranty. Except to the extent of applicable law, any implied warranty, merchantability or fitness of this product is limited to the duration of this warranty.

MedRx will, at its discretion, service and repair out of warranty products at the purchaser's request, charging for parts and labor as necessary.

The limited warranty is deemed void if software or hardware is installed on this product which is not pre-approved by MedRx, Inc. Approved software includes NOAH™ and HIMSA approved hearing aid manufacturer programming modules for fitting hearing aids.

MedRx, Inc. is not responsible for problems resulting from installation of unapproved software or hardware. In the event of unapproved software or hardware installed on the system causing a conflict, MedRx will service the product for a fee to be determined at the time of service.

Any extension of this warranty past the initial one-year warranty is subject to the following (where applicable).

1. A \$300 deductible per repair.
2. Extended warranty does not include cables, connectors or peripherals.
3. Extended warranty of the Video Otoscope covers optics only.



#0086

MedRx

www.medrx-usa.com



1200 Starkey Rd., #105, Largo FL 33771 U.S.A.

Toll Free: (888) 392-1234 • (727) 584-9600

Fax: (727) 584-9602 • Email: medrx@medrx-usa.com



MedRx's Authorized Representative in Europe

(Regulatory affairs only)

Emergo Europe, Molenstraat 15

2513 BH The Hague, The Netherlands