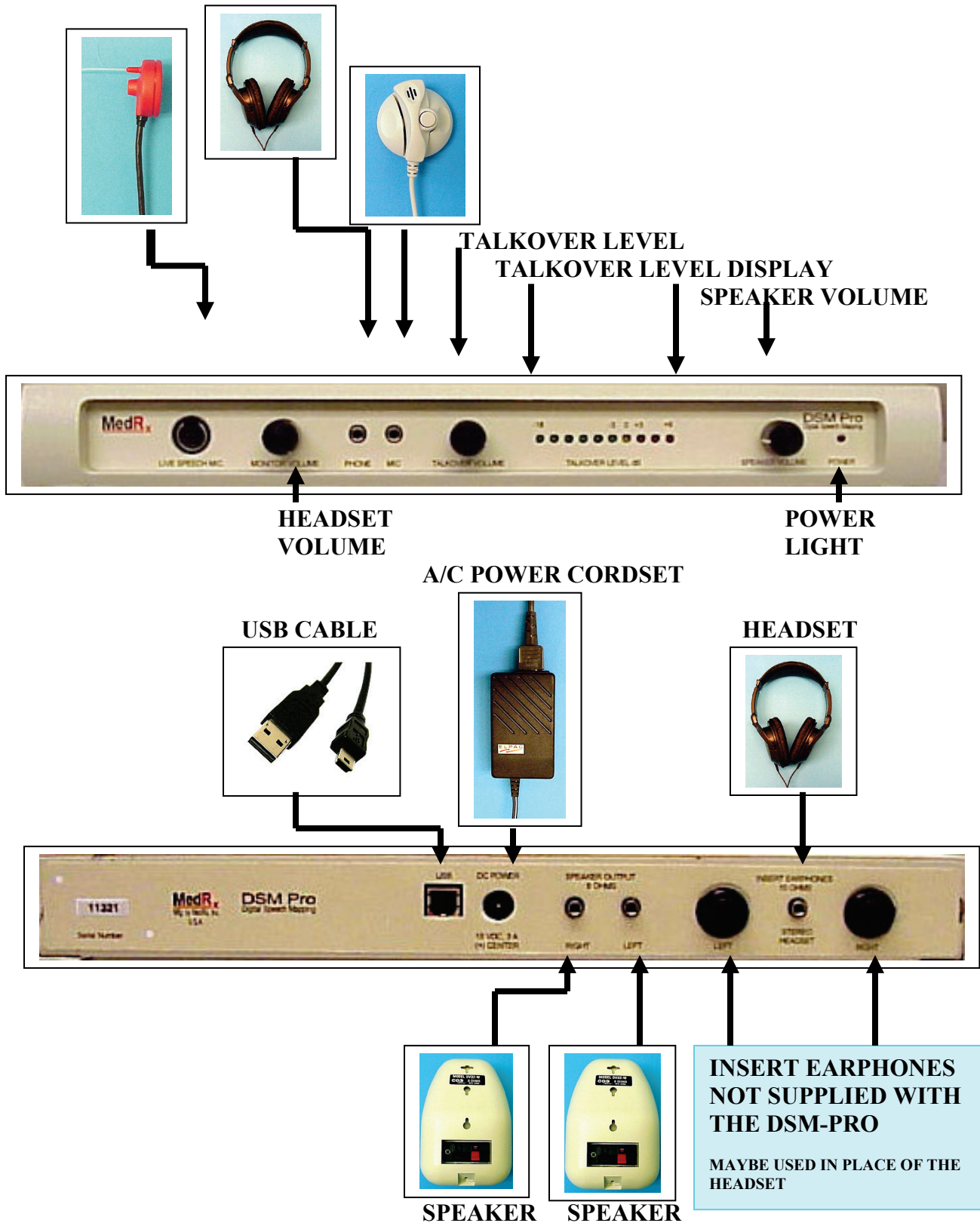


# DSM PRO™

## Installation Manual

© Copyright November 2003

# DSM PRO CONNECTIONS



## **DSM PRO Requirements**

- IBM-PC compatible computer
- Processor:
  - Intel® Pentium® 600MHz or faster
  - Intel® Celeron® 800MHz or faster
  - AMD Athlon® 600Mhz or faster
- Intel® or 100% compatible motherboard chipset
- Windows® 98SE (Second Edition only), Windows® 2000, Windows® Me or Windows® XP™
- 64MB RAM for Windows 98SE. 128MB RAM for Windows® 2000, Windows® Me or Windows XP™
- 250 MB of free hard disk space
- Display adapter supporting 65535 (16-bit) colors or higher
- Available USB port
- CD-ROM or DVD-ROM drive required for software installation

## Installation of DSM-PRO Software

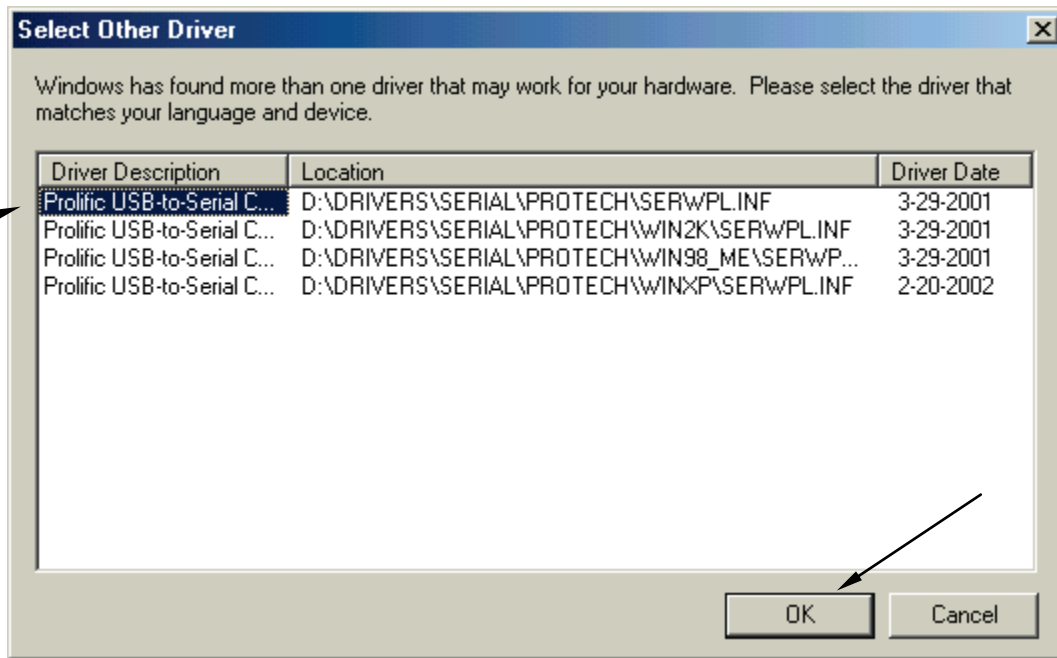
- Insert the DSM-PRO CD-ROM into the CD drive. Wait until the Setup program starts. If the Setup does not start, open the Windows Explorer and double-click on the CD-ROM icon.
- On the Setup screen, choose *Install DSM-PRO*. Follow the instructions on the screen.
- Once the DSM-PRO installation is complete, choose *Install DirectX* on the Setup screen if this option is available. Follow the instructions until the installation is complete.
- Reboot the computer.
- Follow the Driver Installation instructions to install the drivers for your operating system.
- Follow the DSM-PRO Setup instruction for setting up the software before the first use.

## Driver Installation for Windows ME

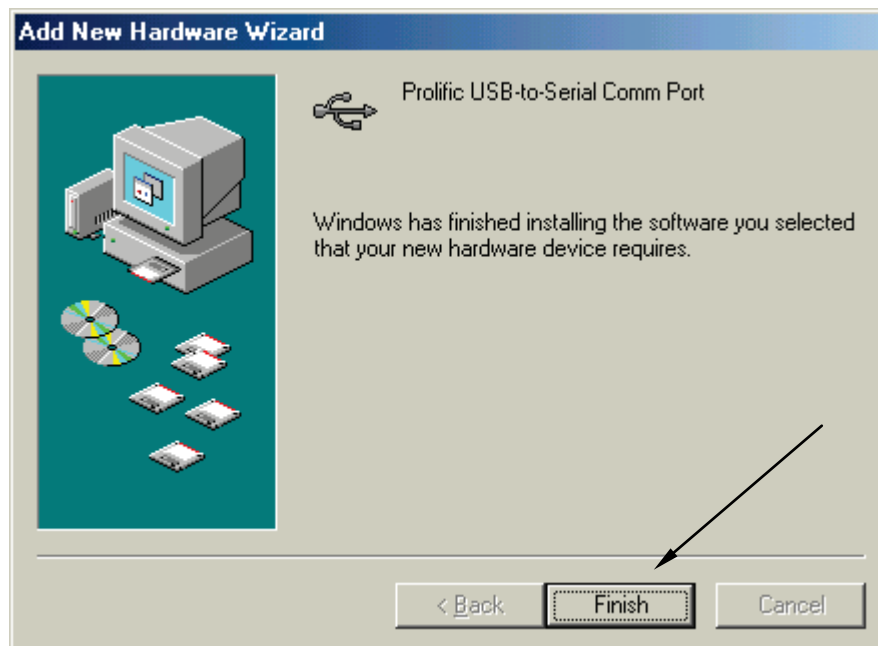
- Close all running applications.
- Insert the DSM-PRO CD-ROM into CD drive. If the DSM-PRO Setup screen appears, exit it by clicking on the *Exit* button.
- Connect the power source to the DSM Pro unit.
- Plug the USB cable into the DSM Pro and into any available USB port on your computer.
- Wait until Windows finds new hardware and displays the *Hardware Wizard* screen shown below.
- If Windows does not find new hardware, it usually means that USB support is not enabled on your machine. Check the machine BIOS settings and enable USB if necessary (you may need the help of a computer technician.)
- Make sure *Automatic search for a better driver* is selected and then click *Next*.



- Wait until Windows scans the CD-ROM, finds the driver, and displays the driver list. If the driver list is not displayed, skip to the next page.
- In the list, make sure the first item is selected and then click *OK*.



- Wait until the installation is complete. Click *Finish* when prompted.



- Wait until Windows finds another new hardware device - SB Audigy NX sound card - and displays the *Hardware Wizard*.
- Make sure *Automatic search for a better driver* is selected and then click *Next*.



- Wait until Windows find the driver on the CD-ROM and install is.
- Click on the *Finish* button when prompted.

**Please follow the DSM-PRO Setup instructions to complete the installation.**

## Driver Installation for Windows 98 Second Edition

(Note: The system is not compatible with Windows 95 or Windows 98 first edition.)

- Close all running applications.
- Insert the DSM-PRO CD-Rom into CD drive. If the DSM-PRO Setup screen appears, exit it.
- Connect the power source to the DSM Pro unit.
- Plug the USB cable into the DSM Pro and into any available USB port on your computer.
- Wait until Windows finds new hardware and displays the *Hardware Wizard* screen.
- If Windows does not find new hardware, it usually means that USB support is not enabled on your machine. Check the machine BIOS settings and enable USB if necessary (you may need the help of a computer technician.)





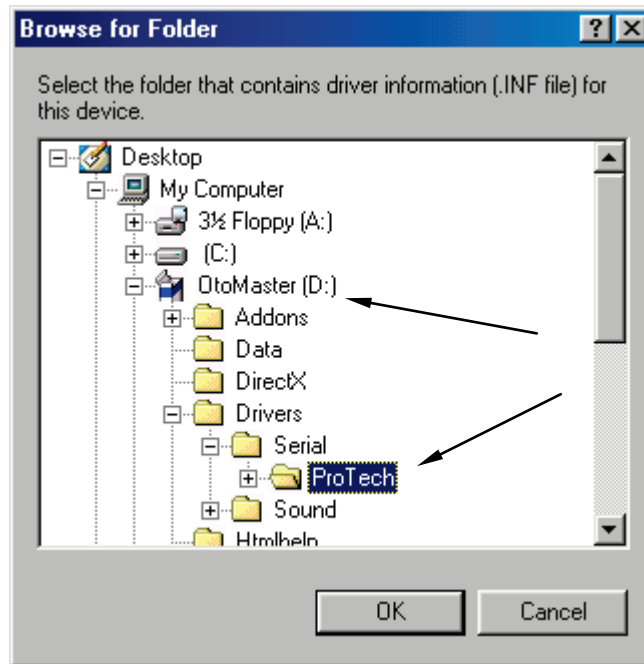
- Make sure *Search for the best driver* is selected and click *Next*.



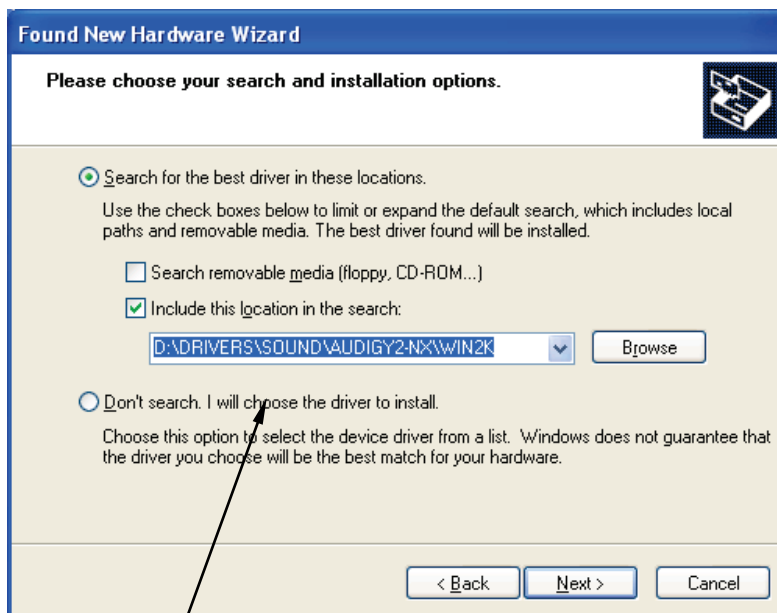
- Check *Specify a location* option and click on the *Browse* icon.



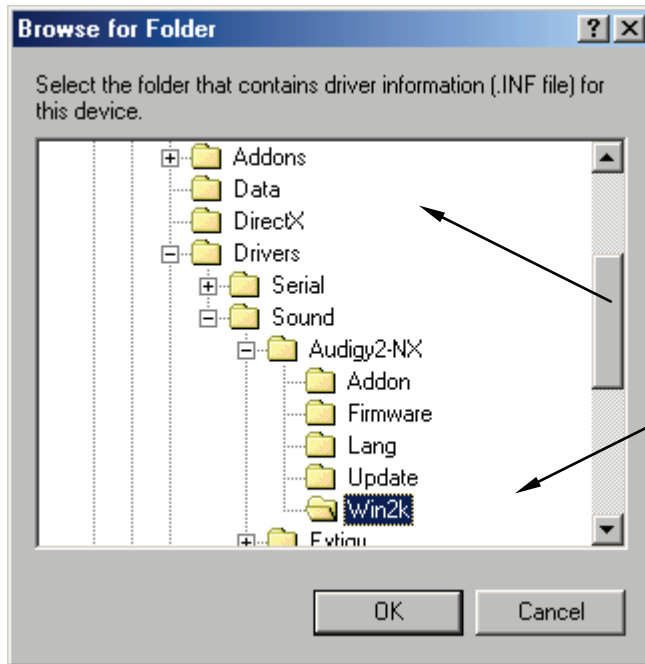
- Find and select the *DSM-PRO CD-ROM\Drivers\Serial\ProTech* directory as shown on the picture below. Click the OK button.



- On the next screen (not shown) click on the *Next* button and wait until the installation is complete. Click *Finish* when prompted.
- Wait until Windows finds another new hardware device - Audigy NX Sound Card - and starts installation for it.
- Follow the installation until Windows shows the following screen. Make sure *Specify a location* is selected and click on the *Browse*.



- Find and select the *DSM-PRO CD-ROM\Drivers\Sound\Audigy NX\Win2k* directory as shown on the picture below. Click the *OK* button.

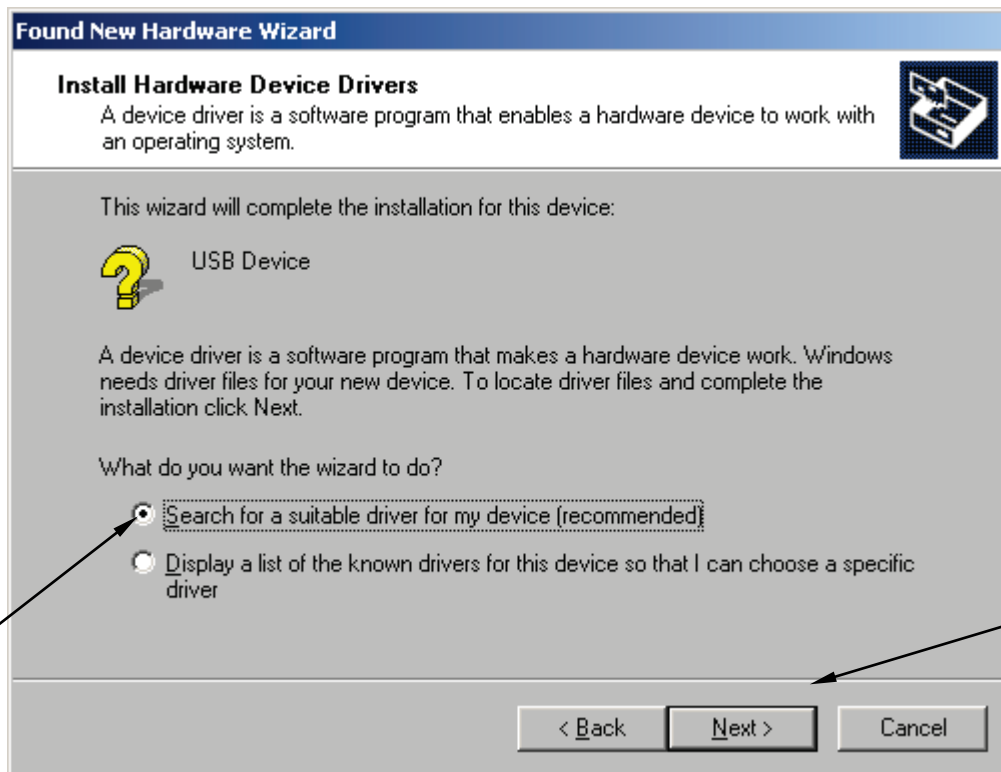


- Click *Next* on the next screen and wait until the installation is complete. Click *Finish* when prompted.

**Please follow the DSM-PRO Setup instructions to complete the installation.**

## Driver Installation for Windows 2000

- Close all running applications.
- Insert the DSM-PRO CD-Rom into CD drive. If the DSM-PRO Setup screen appears, exit it by clicking on *Exit*.
- Connect the power source to the DSM Pro unit.
- Plug the USB cable into the DSM Pro and into any available USB port on your computer.
- Wait until Windows finds new hardware and displays the *Hardware Wizard* screen. Click *Next* to continue.
  - If Windows does not find new hardware, it usually means that USB support is not enabled on your machine. Check the machine BIOS settings and enable USB if necessary (you may need the help of a computer technician.)
- On the *Install Hardware Device Drivers* screen make sure *Search for a suitable driver for my device* is selected and then click *Next*.

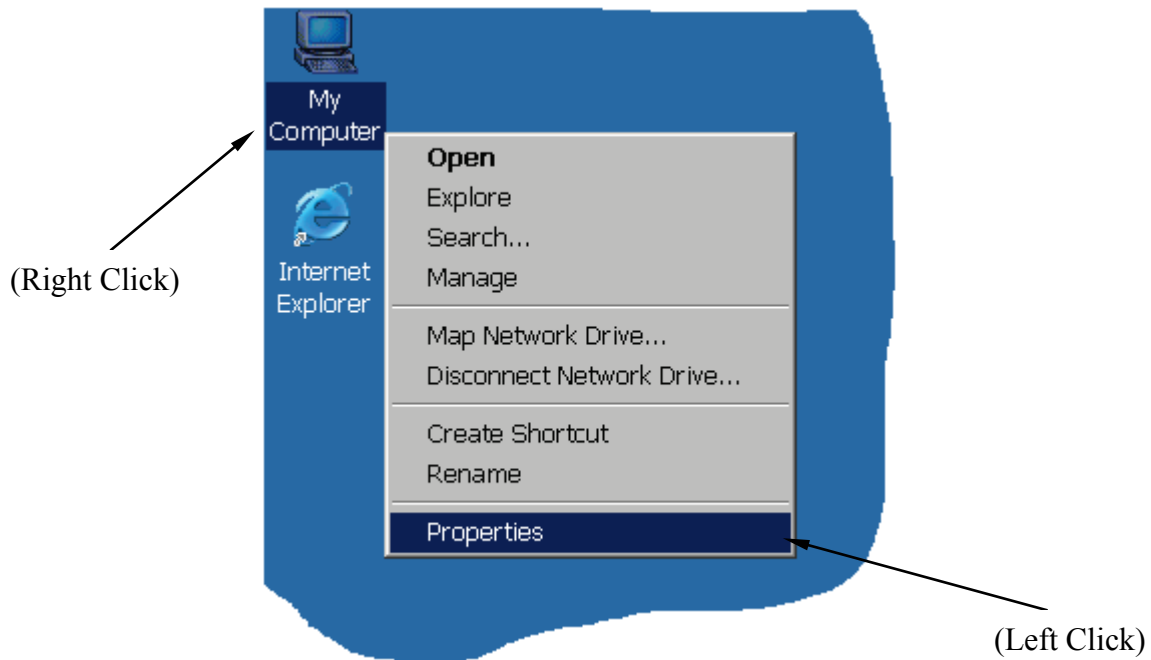


- On the *Locate Driver Files* screen make sure *CD-ROM drives* is selected and click *Next*.

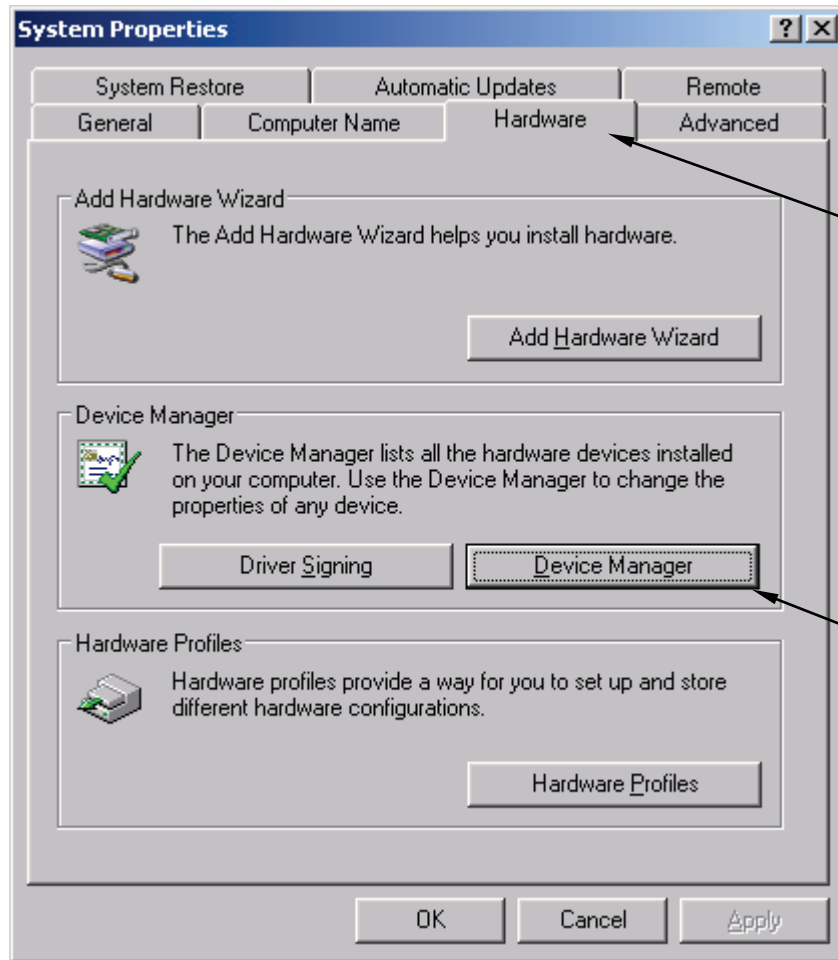


- Wait until Windows scans the CD-ROM and finds the driver.
- Follow the installation by clicking on *Next* and *Finish*.

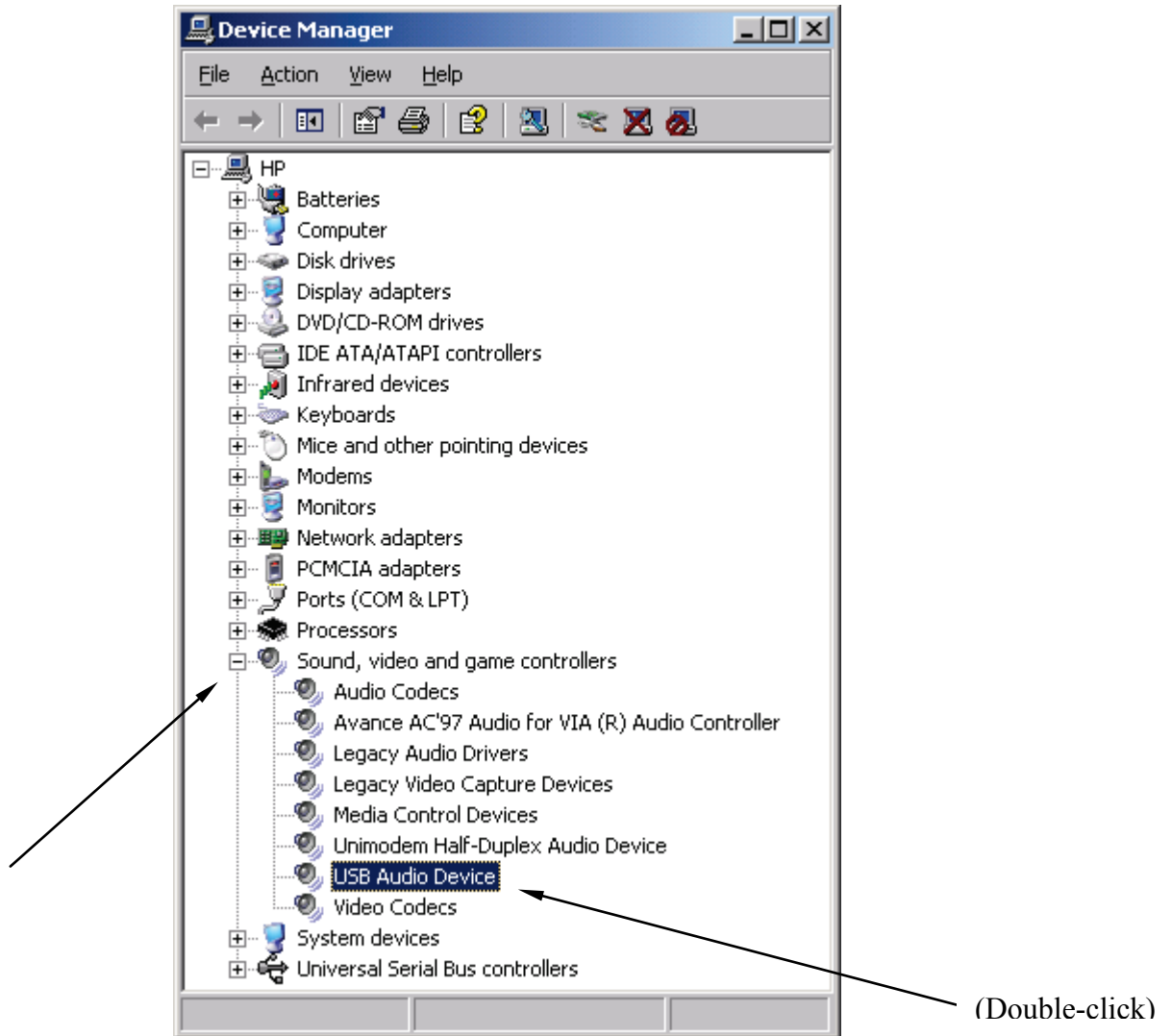
- Wait until Windows finds another new hardware device - SB Audigy NX sound card - and installs it. Wait until the installation is complete and Windows is not finding any more devices.
- By default, Windows 2000 installs a generic driver for the USB sound card. This driver is incorrect and therefore has to be replaced.
- To replace the driver click with the right mouse button on *My Computer* icon on the Desktop. From the menu, choose *Properties* (click with the left mouse button.)



- On the *System Properties* screen choose *Hardware* tab and then click on *Device Manager*.

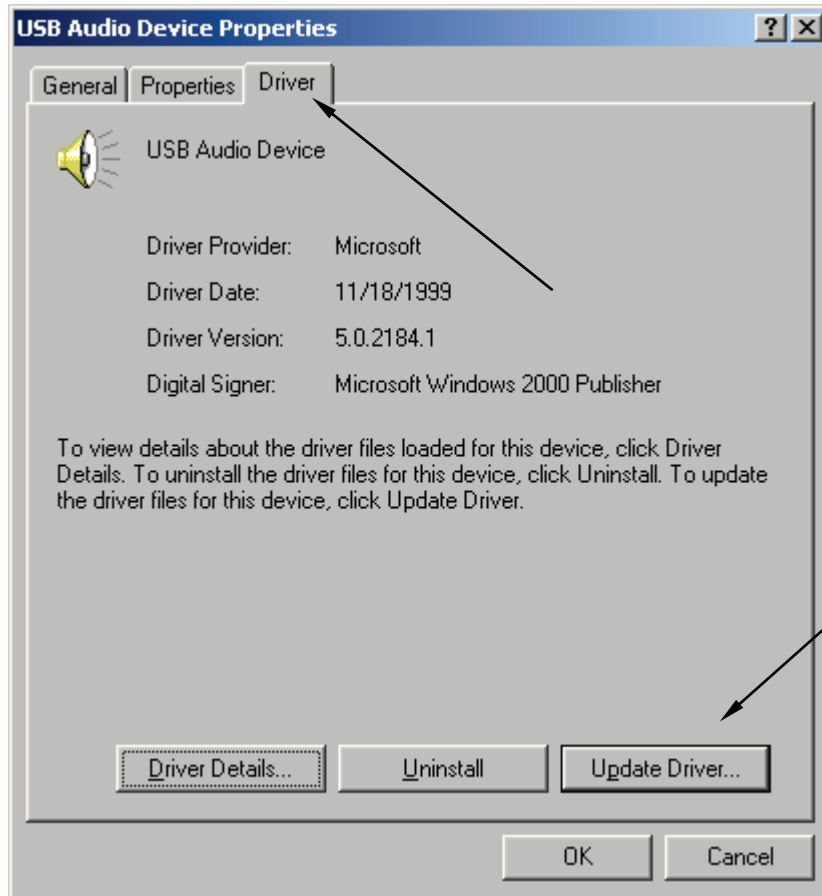


- In the device list, click on the [+] next to *Sound, video and game controllers*. In the expanded list, double-click on the *USB Audio Device*.



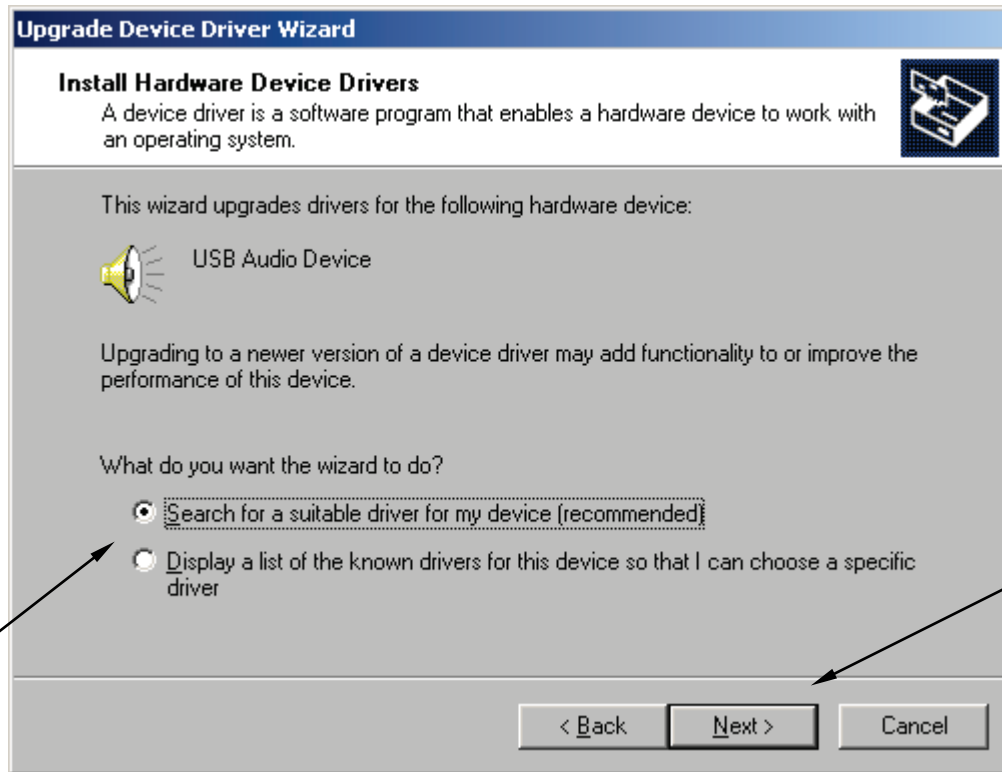


- On the Device properties screen, choose the *Driver* tab and then click on *Update Driver*.

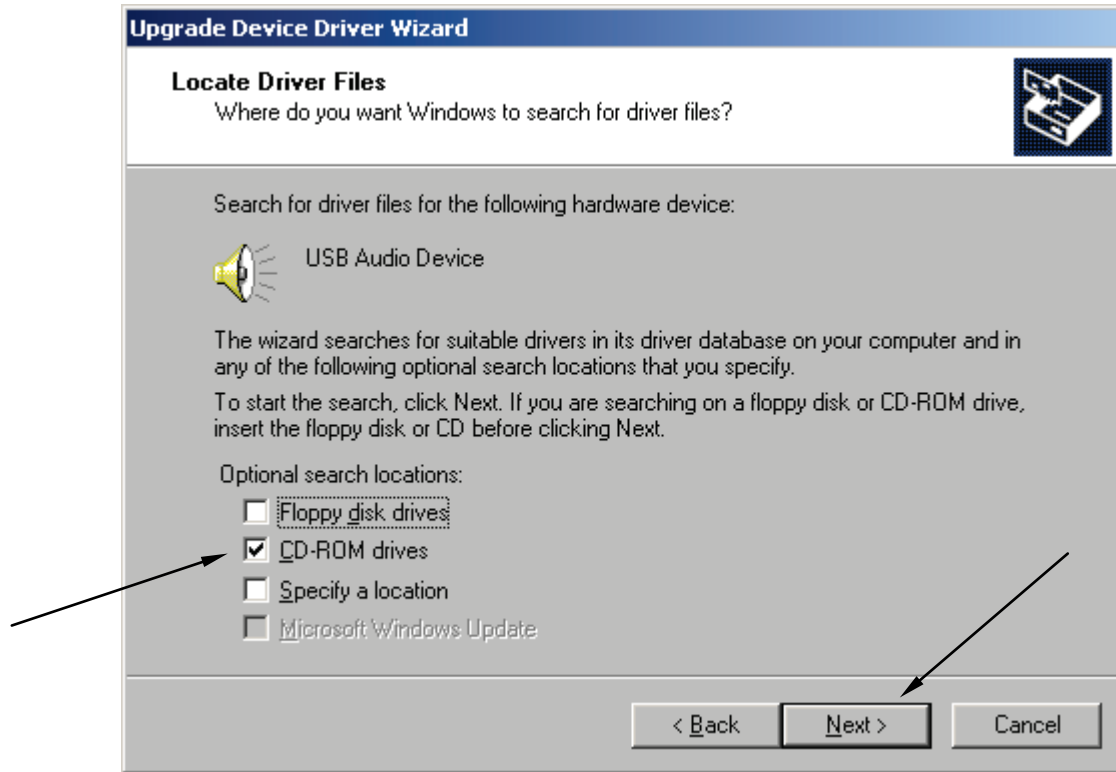


- On the *Upgrade Device Wizard* screen click *Next* to continue.

- On the *Install Hardware Device Drivers* screen make sure *Search for available driver for my device* is selected and click *Next*.



- On the *Locate Driver Files* screen make sure *CD-ROM drives* is selected and click *Next*.



- Wait until Windows scans the CD-ROM and finds the driver.
- Follow the installation by clicking on *Next* and *Finish*.
- Reboot the machine if asked.
- If you ever change the USB port on your computer for the DSM Pro, you will need to re-install the drivers for this port. When you plug the USB cable to a different USB port, Windows will prompt you to install new hardware. Follow the Driver Installation instructions to reinstall the drivers. You may not need to go to System Properties and update the USB Audio device anymore as Windows will know about the sound card driver already and will install it properly.

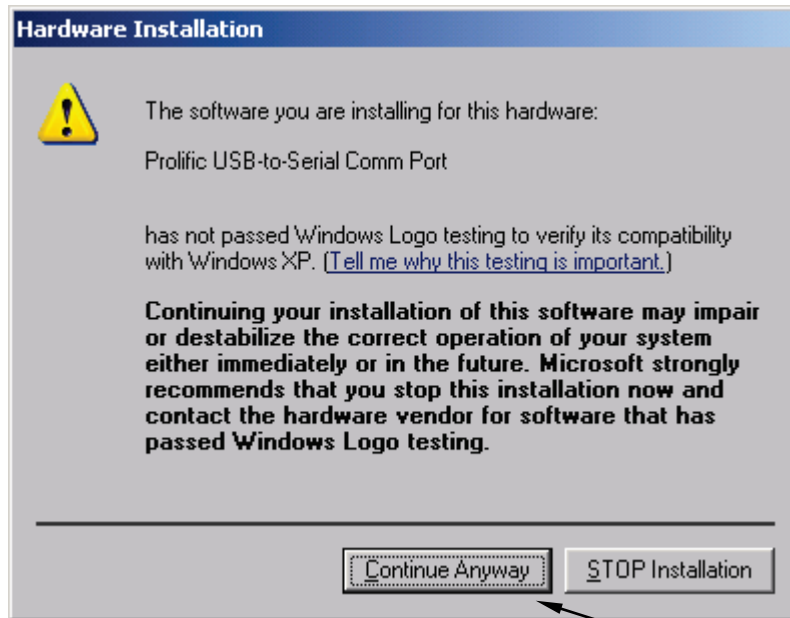
**Please follow the DSM-PRO Setup instructions to complete the installation.**

## Driver Installation for Windows XP

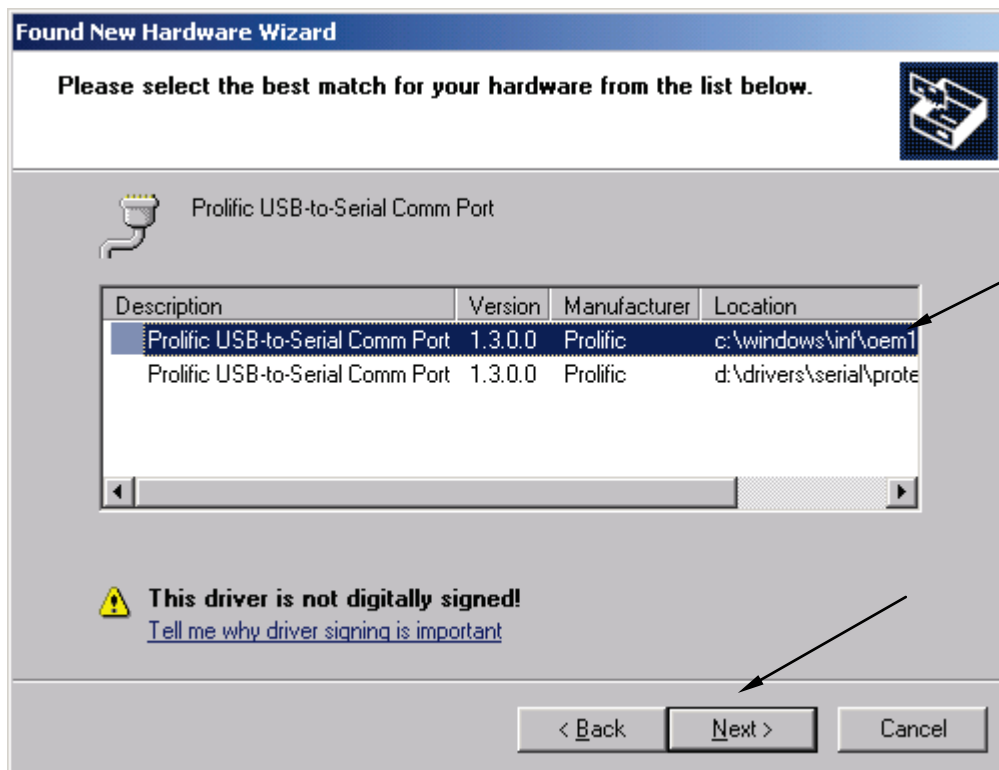
- Close all running applications.
- Insert the DSM-PRO CD-Rom into CD drive. If the DSM-PRO Setup screen appears, exit it by clicking on *Exit*.
- Connect the power source to the DSM Pro unit.
- Plug the USB cable into the DSM Pro and into any available USB port on your computer.
- Wait until Windows finds new hardware and displays the *Hardware Wizard* screen.
  - If Windows does not find new hardware, it usually means that USB support is not enabled on your machine. Check the machine BIOS settings and enable USB if necessary (you may need the help of a computer technician.)
- Make sure *Install the Software Automatically* is selected and then click *Next*.



- If the Logo Testing compatibility prompt appears, ignore it by clicking on *Continue Anyway*.



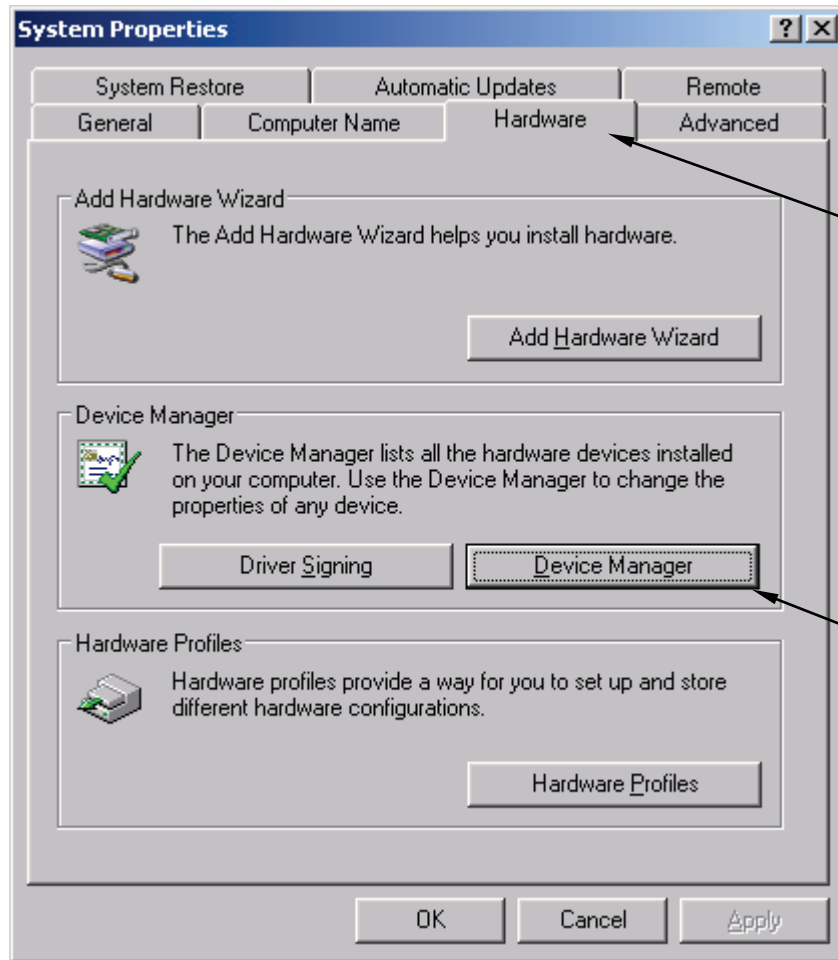
- Wait until Windows scans the CD-ROM and finds the driver.
- If Windows displays the driver list (shown below), make sure that the first item is selected and click *Next*. Wait until the installation is complete. Click *Finish* when prompted. If the driver list is not displayed, skip to the next page.



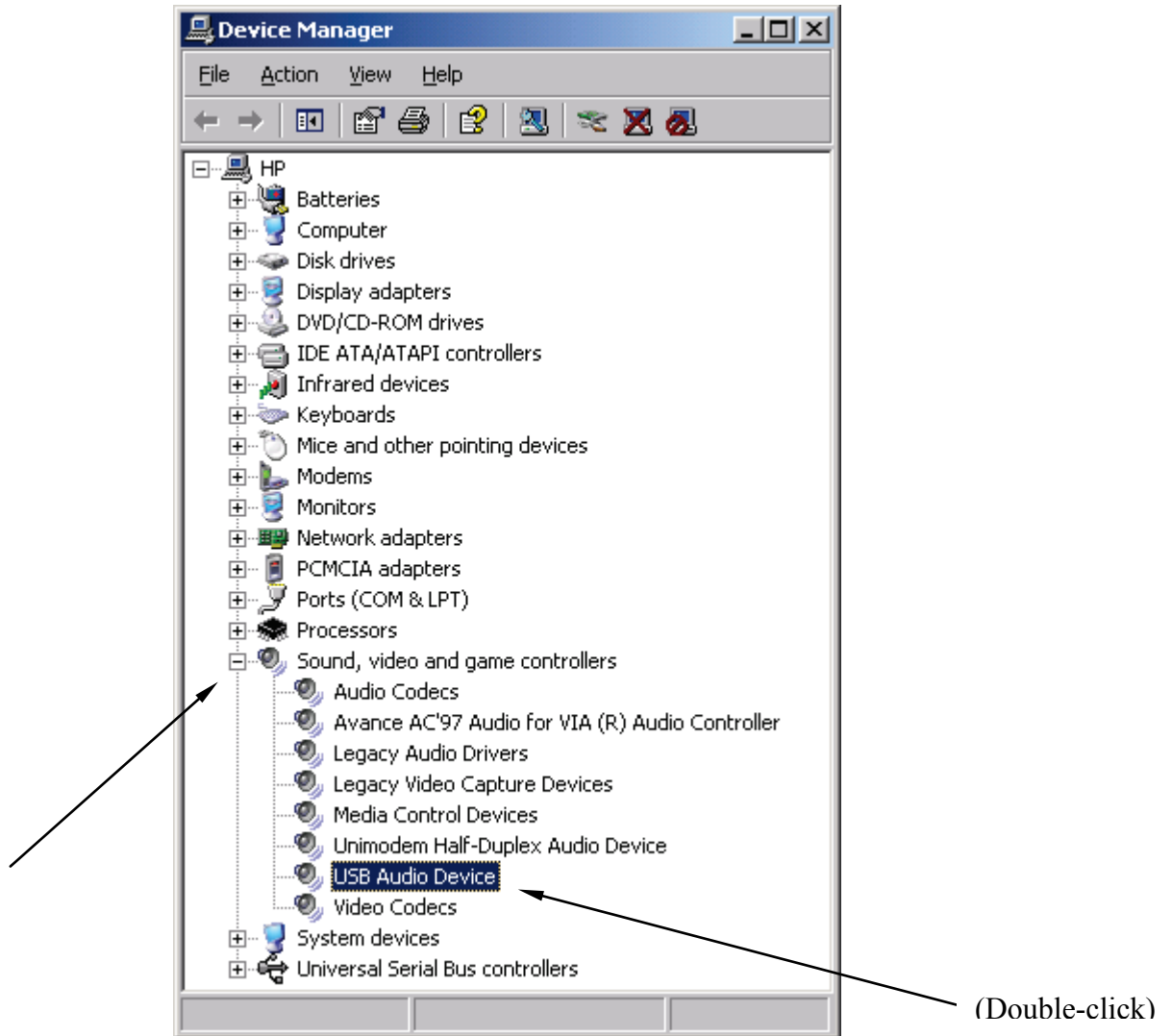
- Wait until Windows finds another new hardware device - SB Audigy NX sound card - and installs it. Wait until the installation is complete and Windows is not finding any more devices.
- By default Windows XP installs a generic driver for the USB sound card. This driver is incorrect and therefore has to be replaced.
- To replace the driver, click on the *Start* icon, then click with the right mouse button on the *My Computer* icon, and then choose (left-click) *Properties* from the menu.



- On the *System Properties* screen choose *Hardware* tab and then click on *Device Manager*.

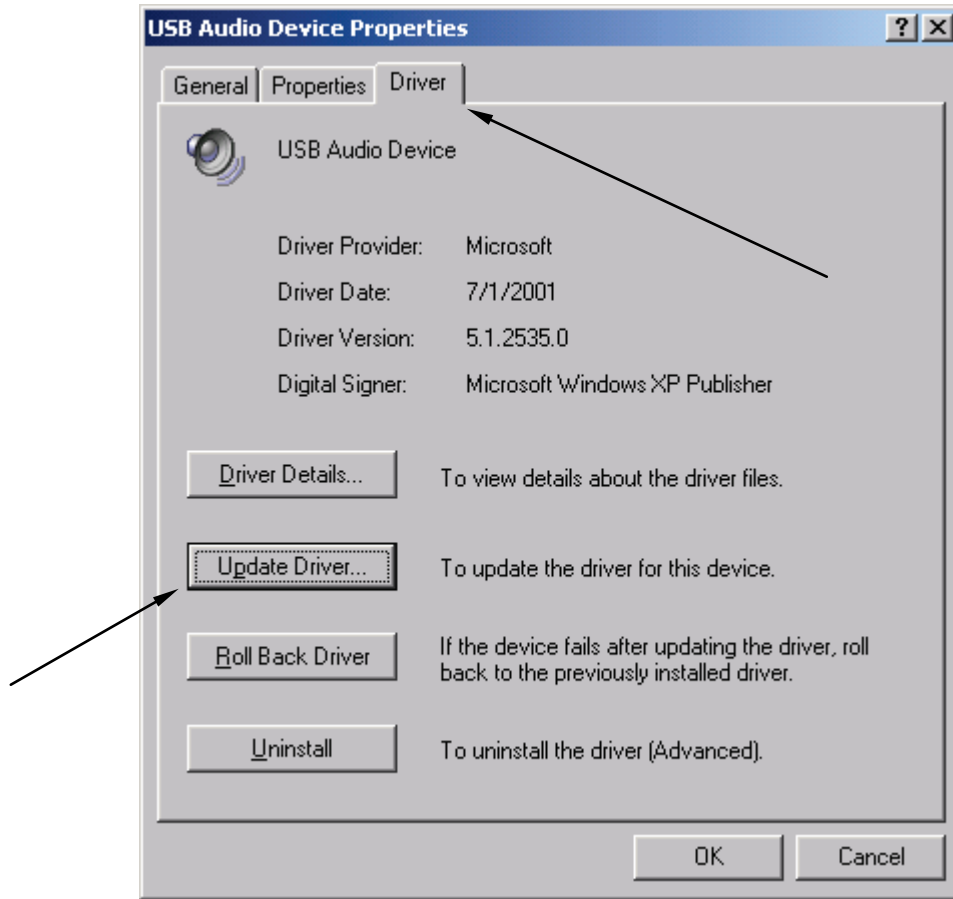


- In the device list, click on the [+] next to *Sound, video and game controllers*. In the expanded list, double-click on the *USB Audio Device*.





- On the Device properties screen, choose the *Driver* tab, and then click on *Update Driver*.



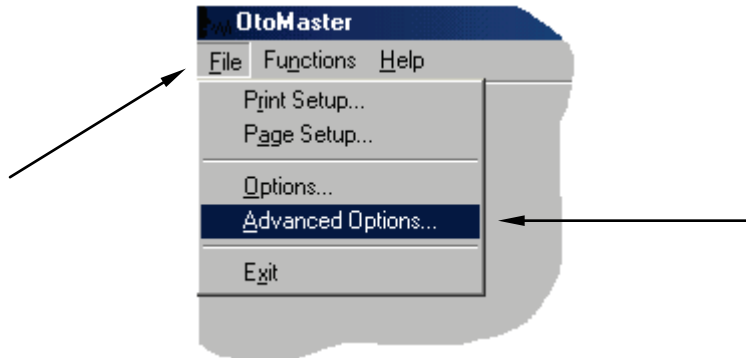
- Follow the instruction on the screen. On the *Hardware Wizard* screen, make sure *Install the Software Automatically* is selected and click *Next*. Wait until Windows install the drivers. Reboot the computer if asked.
- If you ever change the USB port on your computer for the DSM Pro, you will need to re-install the drivers for this port. When you plug the USB cable to a different USB port, Windows will prompt you to install new hardware. Follow the Driver Installation instructions to reinstall the drivers. You may not need to go to System Properties and update the USB Audio device anymore as Windows will know about the sound card driver already and will install it properly.

**Please follow the DSM-PRO Setup instructions to complete the installation.**

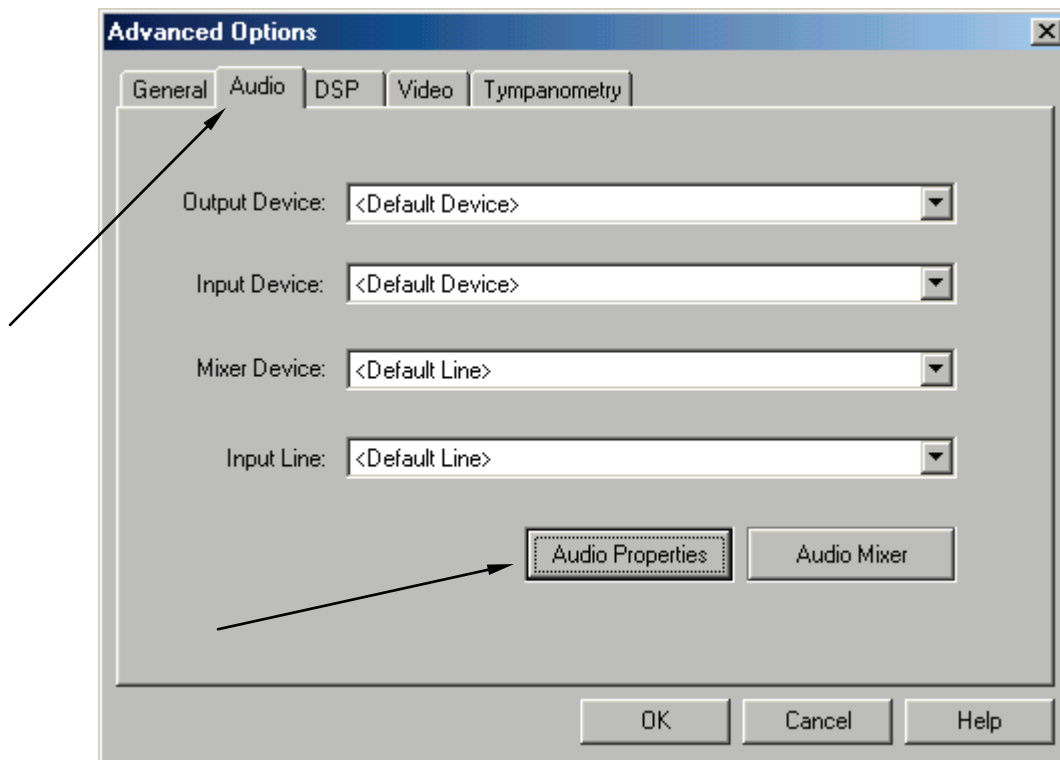
## DSM-PRO Software Setup

(The DSM-PRO Software and the drivers must be installed prior to following this document)

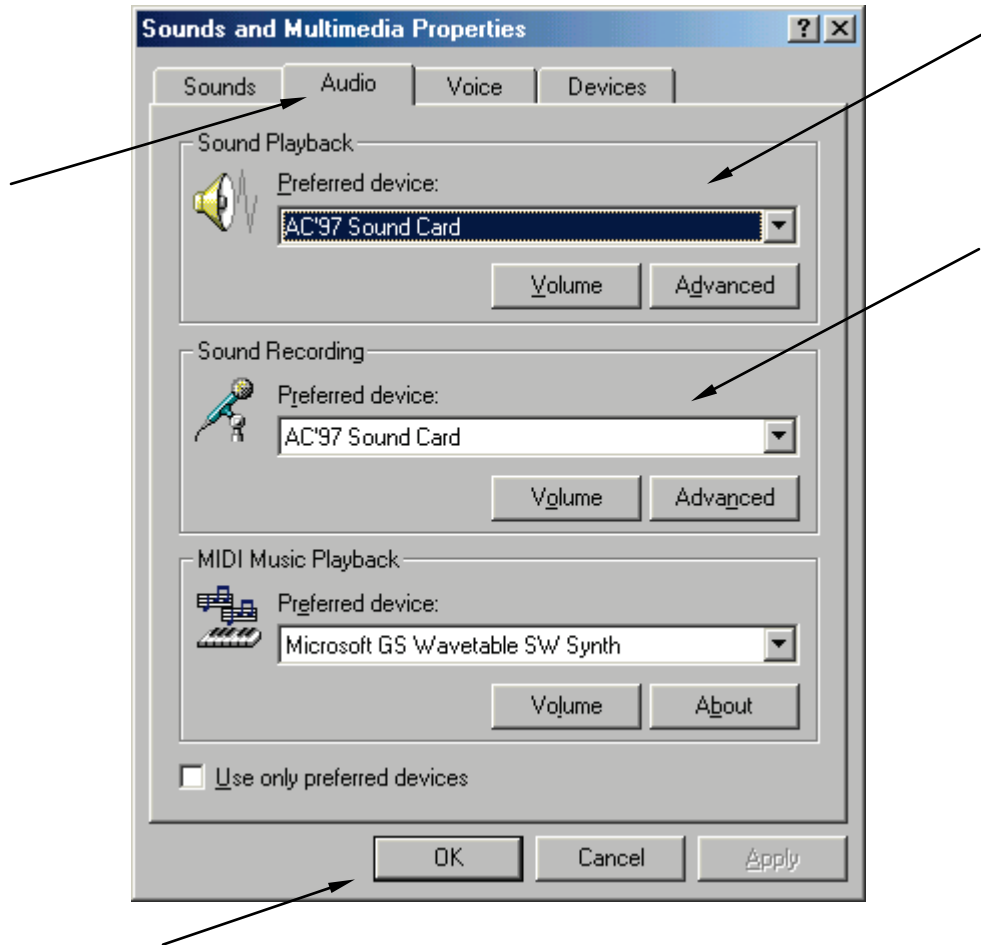
- Start the DSM-PRO software by clicking on the DSM-PRO icon on Windows desktop.
- From the DSM-PRO main screen choose *File*, then choose *Advanced Options*.



- On the *Advanced Option* screen choose the *Audio* tab.
- On the *Audio* page, click on *Audio Properties* to open *Sound and Multimedia Properties* screen.

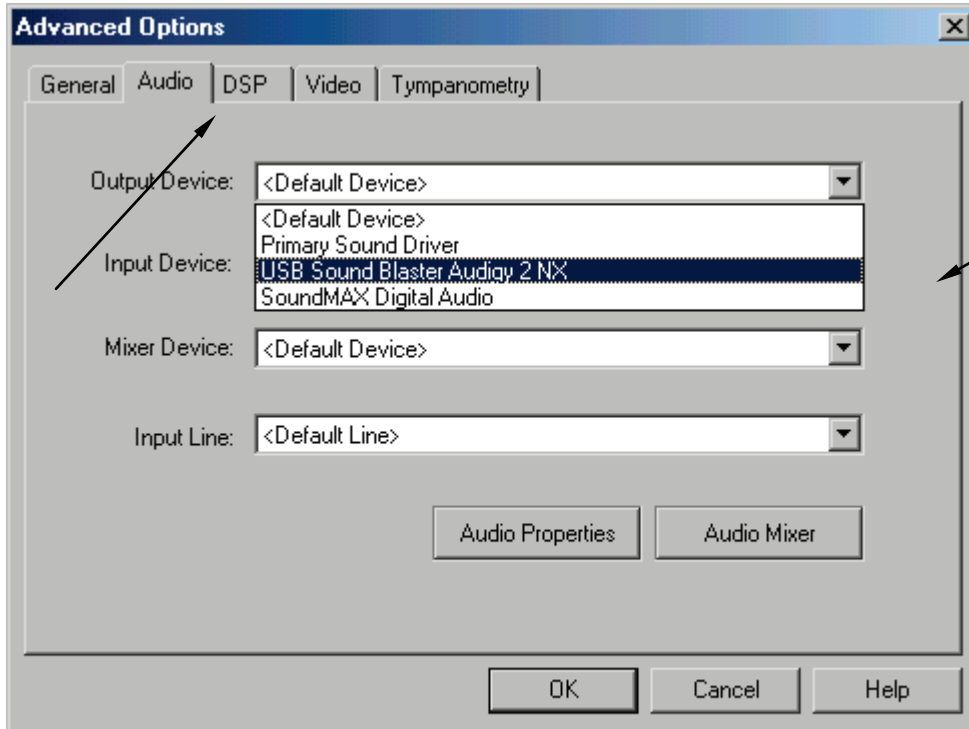


- On the *Sound and Multimedia Properties* screen, make sure the *Audio* page is selected.
- Click the *Preferred device* box for both *Sound Playback* and *Sound Recording*. In both cases make sure to select the preferred devices different from the *Sound Blaster Audigy NX*. Normally they should be set to the sound card that is installed on your computer. If you do not have a sound card installed on your computer, leave the preferred devices set to *Sound Blaster Audigy NX*. Once the preferred devices are set, click on the *OK* button.

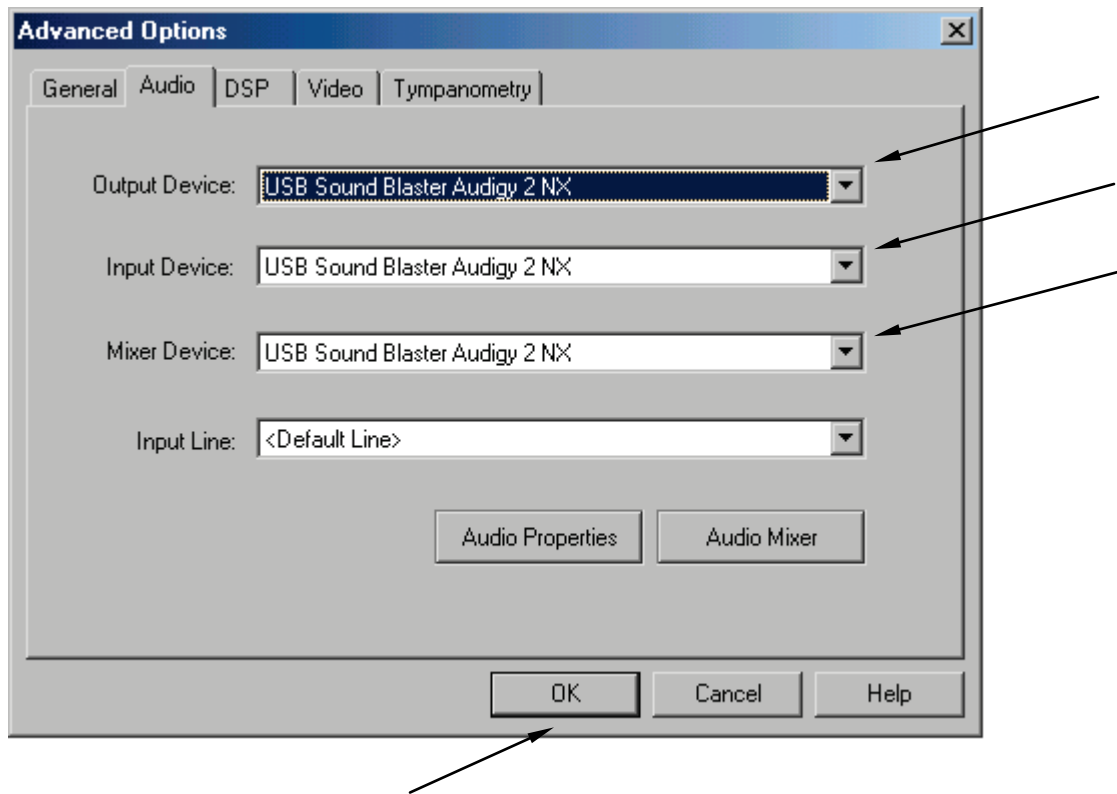


(Note: Windows uses the preferred devices for regular needs, such as playing back event sounds or music files. Setting the preferred device different from the one used by the DSM-PRO will prevent Windows and DSM-PRO trying to use the same sound device at the same time.)

- On the DSM-PRO *Audio* properties page, click on the *Output Device* box and select *Creative SB Audigy NX* from the list.

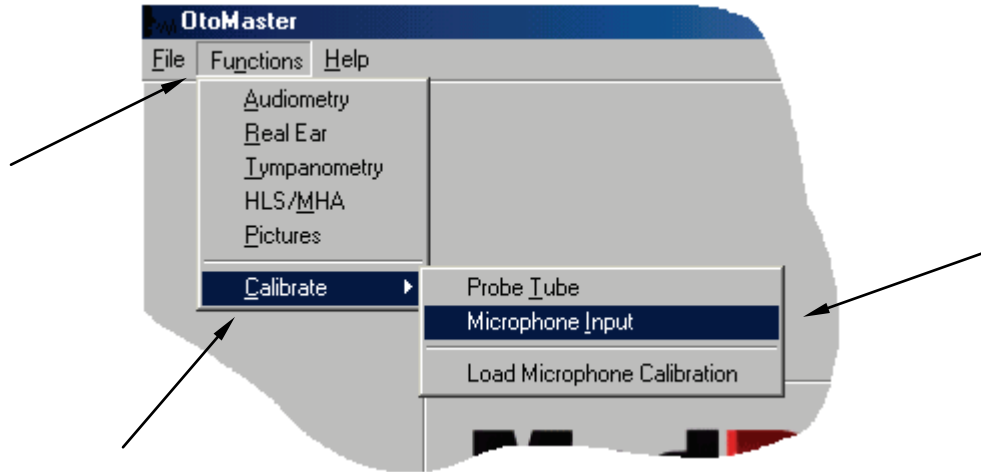


- Make sure the *Input Device* and *Mixer Device* are also set to *Creative SB Audigy NX*. If not, click on the appropriate box and change the device. When finished, click on *OK*.

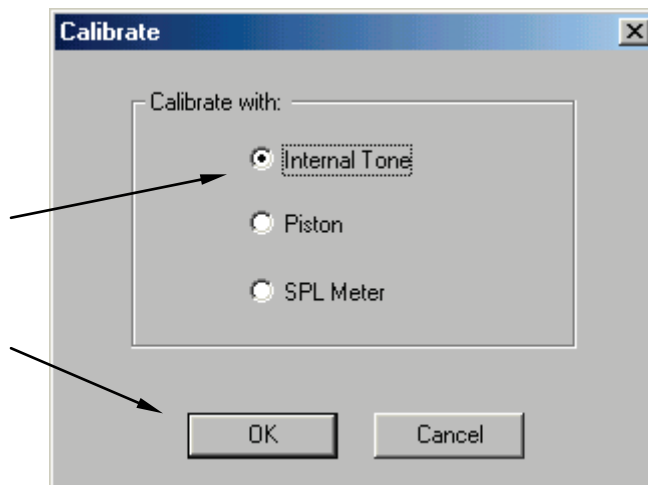


## Calibrating the System

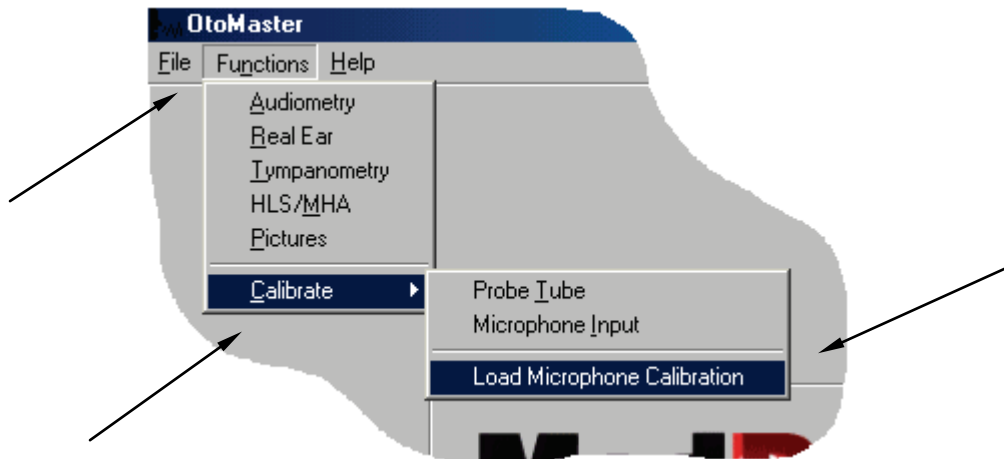
- From the DSM-PRO main screen, choose *Functions*, then *Calibrate*, then *Microphone Input*.

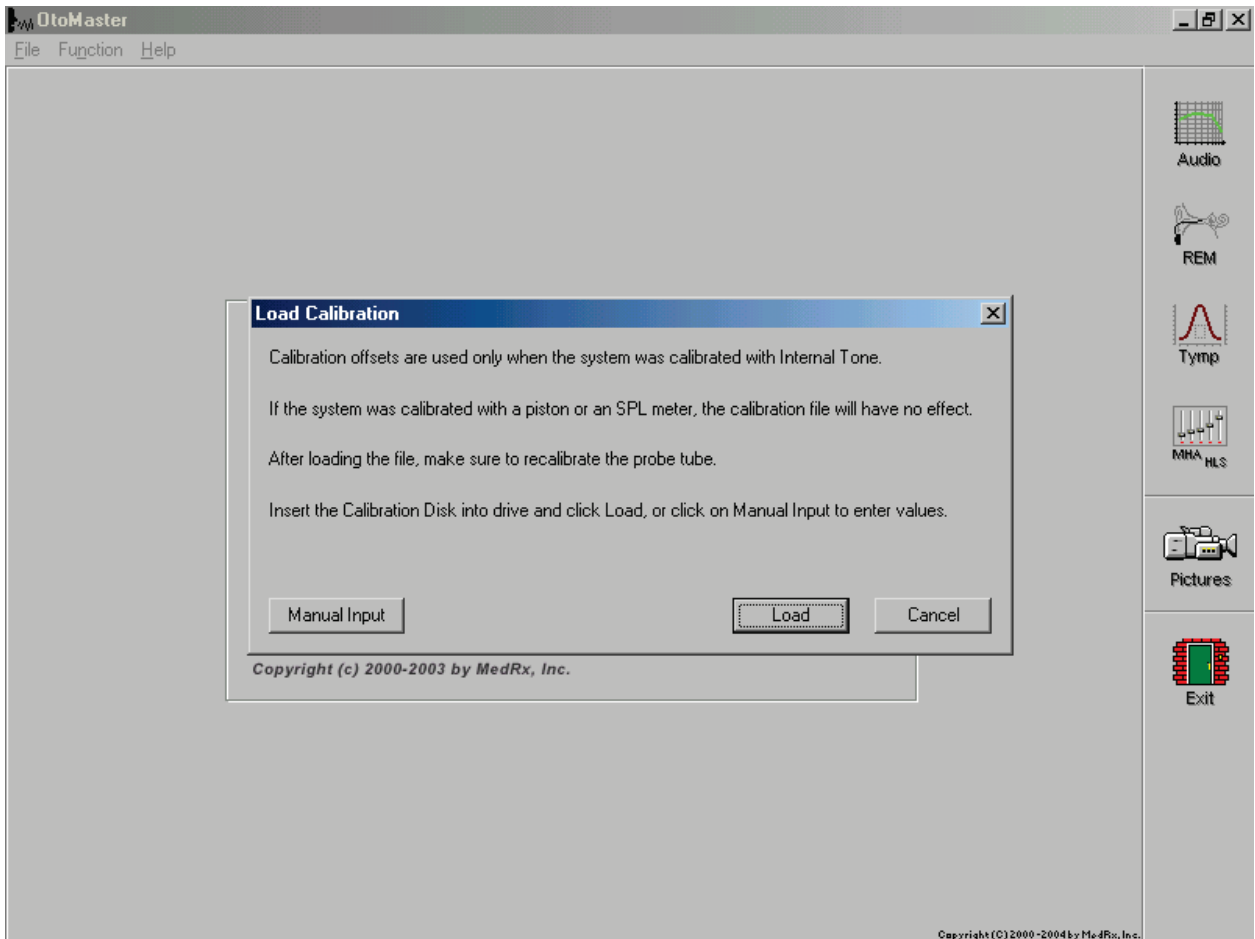


- On the Calibrate screen make sure the *Internal Tone* option is selected and click *OK*.



- On the Calibration screen (not shown), click on *Start* and wait until calibration is finished. Click on *Close* to exit the calibration screen.
- From the DSM-PRO main screen, choose *Functions*, then *Calibrate*, then *Load Microphone Calibration*.





You receive the 'Load Calibration' screen.

You have two choices:

- Load calibration floppy disk.
- Enter calibration offsets manually.

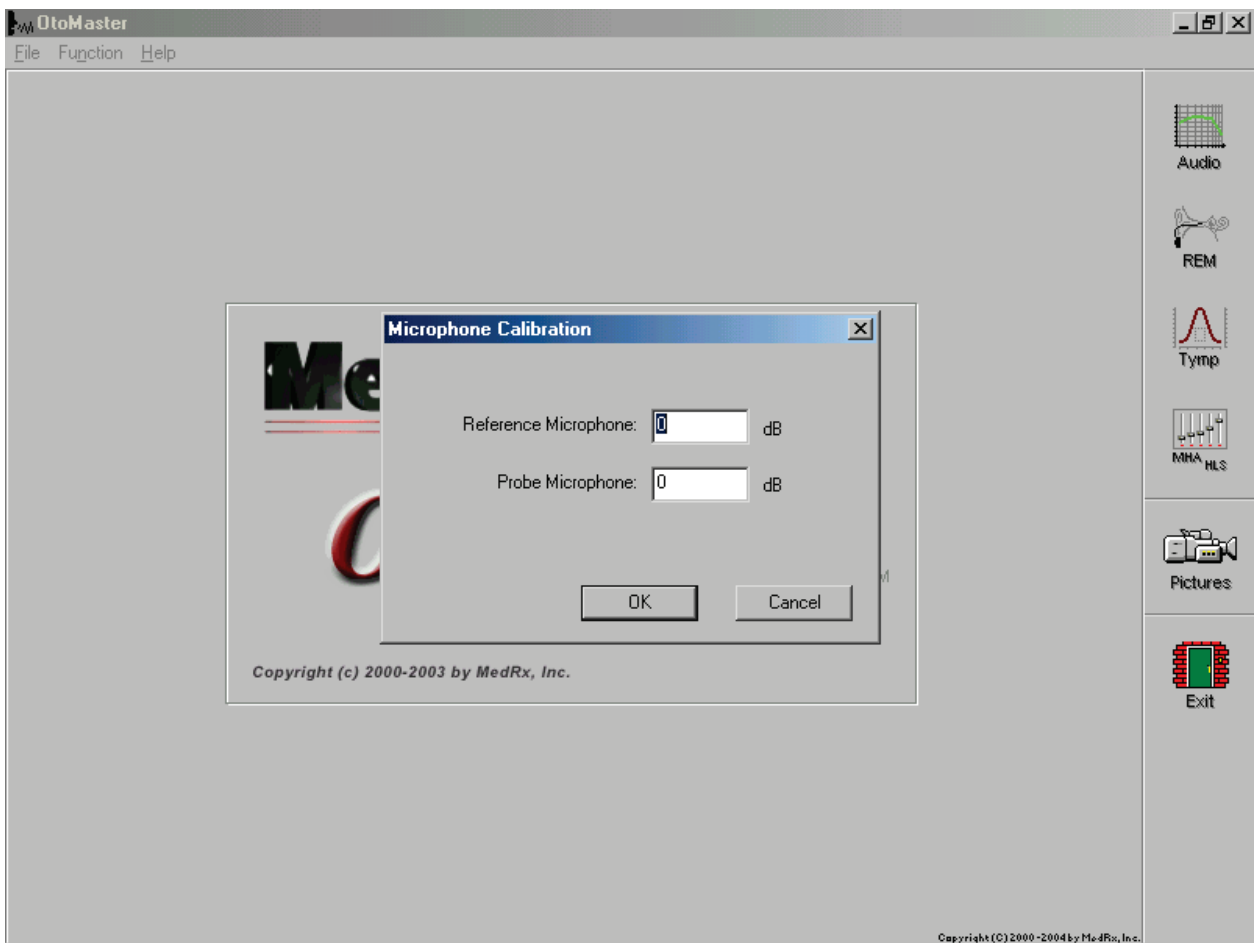
If using floppy disk:

Insert the calibration disk into the drive and select 'LOAD'.

If using manual input:

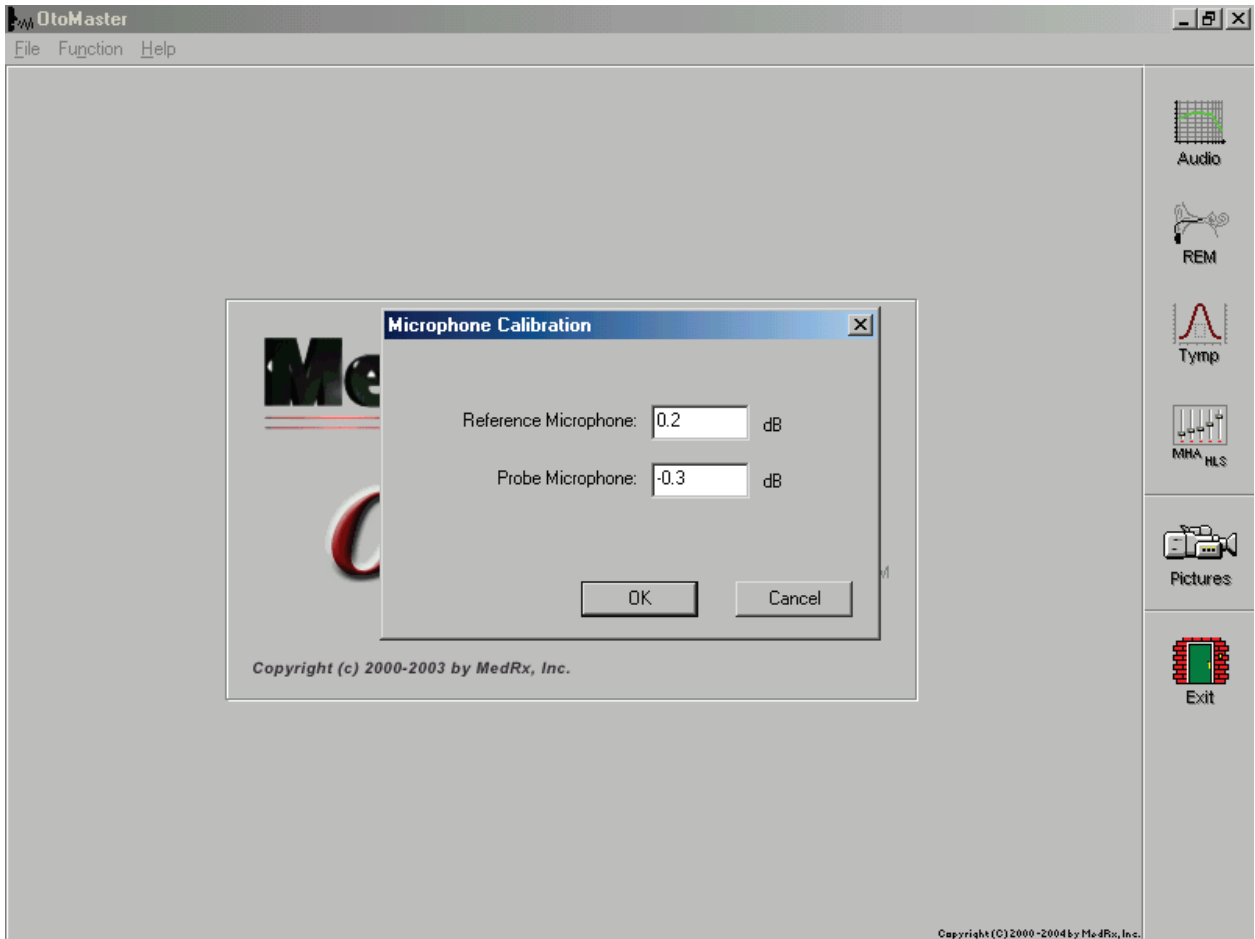
Select 'MANUAL INPUT' and receive following screen to enter values.





The manual input screen is set with Reference and Probe Microphone values of zero.

See following screen on how to enter your offset values.



When entering values, note the following rules.

Enter period for decimal value.

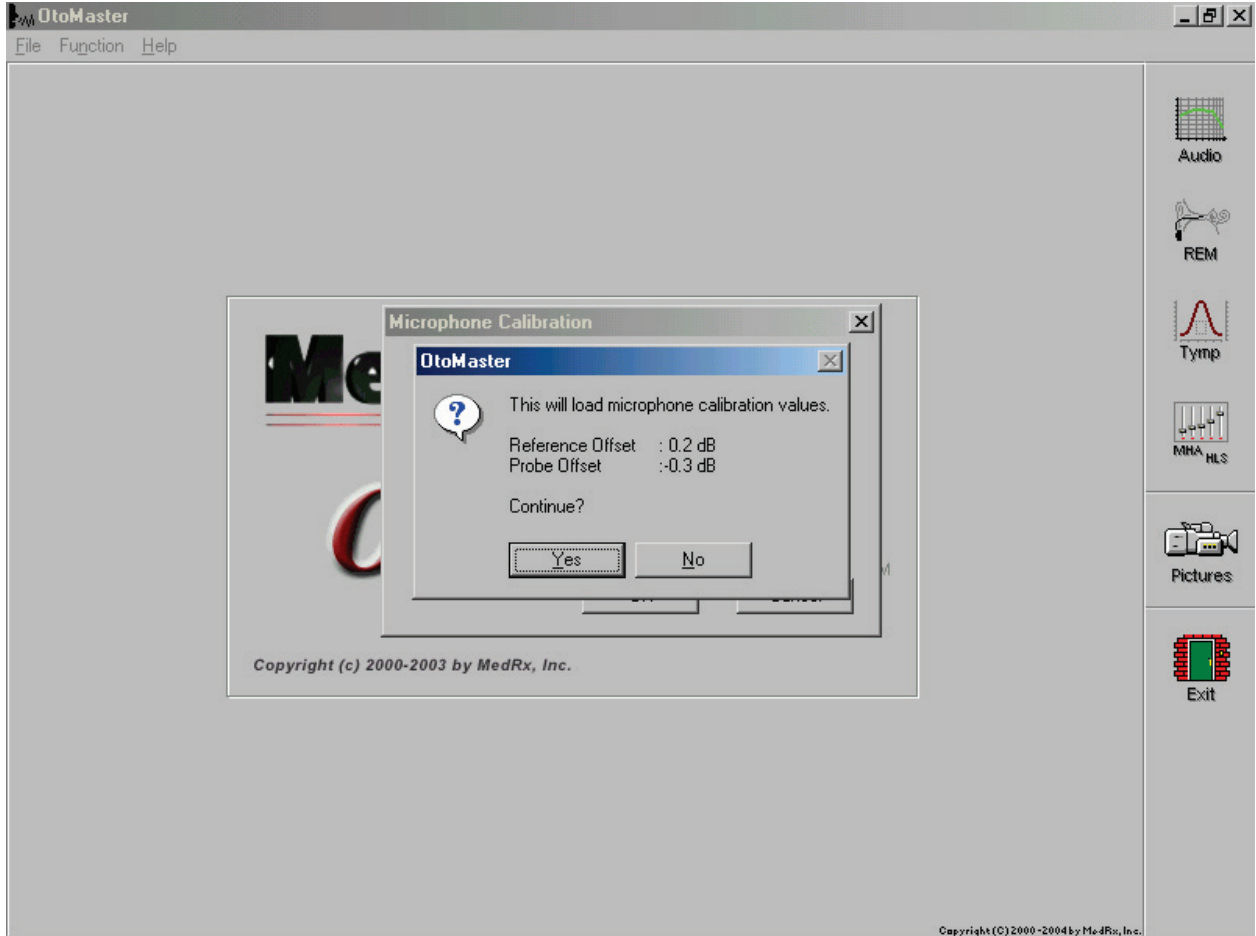
If value is negative you must enter minus (-) sign.

No plus sign is needed for positive value.

Double-check the values you entered before selecting 'OK'

This sample shows Reference Microphone entered as positive value and Probe Microphone entered as minus value.

After selecting 'OK' you will receive the following screen.

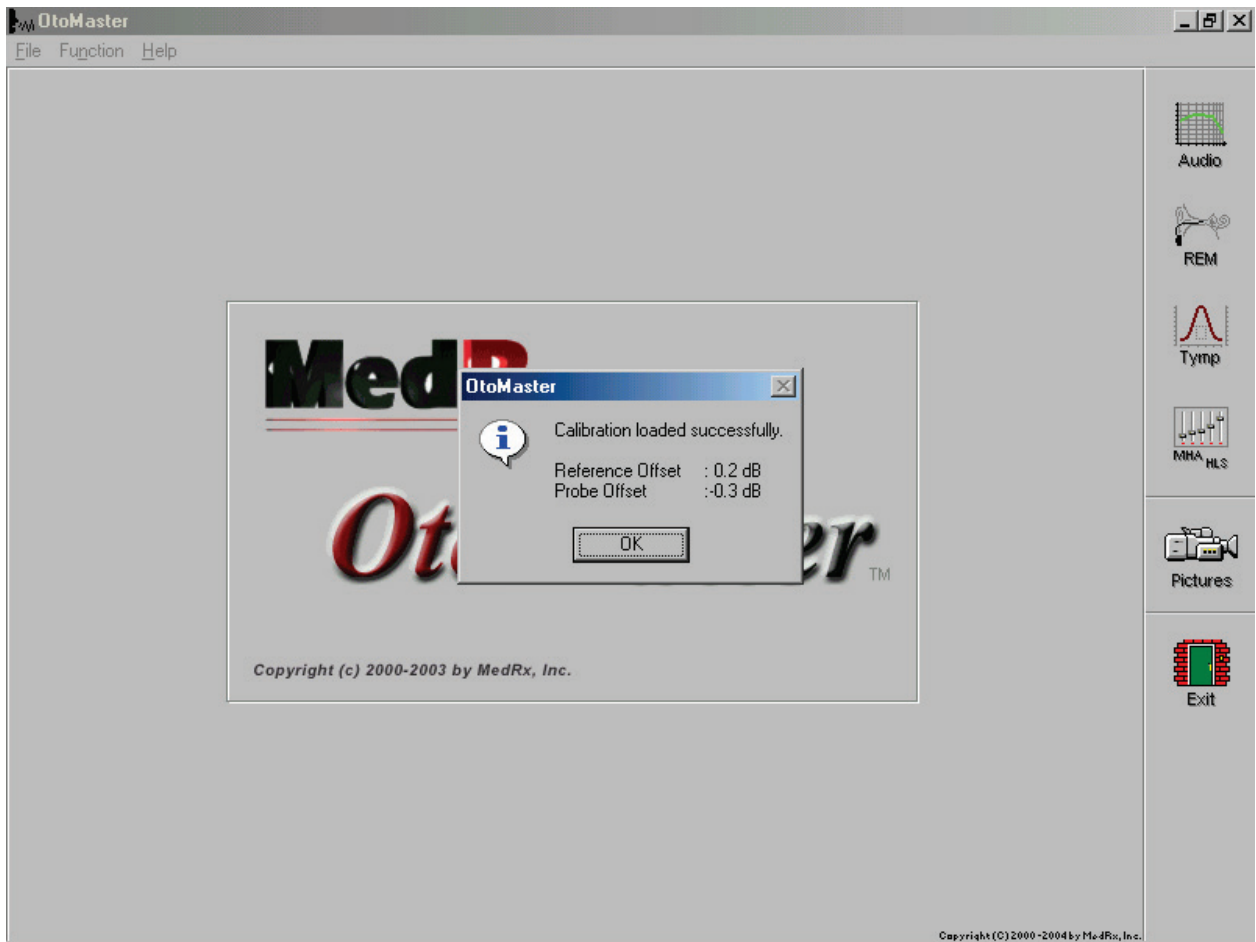


This screen is received if the values were entered manually or from floppy calibration disk.

Last chance to verify correct offset values.

Select 'YES' to load values.

You will receive the following screen.



Screen shows conformation the calibration values for Reference Offset and Probe Offset loaded successfully.

Click 'OK'. You are ready to select other functions from the OtoMaster Main Menu.

- **Installing DSM-PRO NOAH module**

- Insert the DSM-PRO CD-ROM into CD drive.
- Start NOAH.
- Follow the NOAH Module Installation procedure.
- When asked to provide the path to a new module, type: *D:\NOAH*  
(Note: D: is the actual CD-ROM drive letter. On some systems it may be different.)
- Wait until NOAH installs the module.

## Limited Warranty

MedRx, Inc warrants the **DSM PRO** System to be free from defects in material and workmanship for one year from the time of purchase. If this system fails to perform as specified during this period, the purchaser is responsible for calling MedRx at (888) 392-1234. The company's representative will advise the owner to either return specific components or the entire system to:

MedRx Inc.  
1200 Starkey Road, #105  
Largo, FL 33771

MedRx will repair or replace any defective parts, fully test the system and/or components and ship the system promptly back to the owner. There is no cost for this warranty service, provided the system is one year old or less and has not been misused, abused or damaged. Such damage includes, but is not limited to, dropping, exposure to excessive heat greater than 100°F and water/liquid damage.

Repair or replacement of the system as provided under this warranty is the sole and exclusive remedy of the purchaser. MedRx shall not be liable for any consequential or incidental damages, or for breach of any express or implied warranty. Except to the extent of applicable law, any implied warranty, merchantability or fitness of this product is limited to the duration of this warranty.

MedRx will, at its discretion, service and repair out of warranty components at the purchaser's request, charging for parts and labor as necessary.

The limited warranty is deemed void if software or hardware is installed on the **DSM PRO** which is not pre-approved by MedRx, Inc. Approved software includes NOAH and HIMSA approved hearing aid manufacture programming modules for fitting hearing aids. Installation of HIPRO box is approved.

MedRx, Inc is not responsible for problems resulting from installation of unapproved software or hardware. In the event of unapproved software or hardware installed on the system causing a conflict with the **DSM PRO** functions, MedRx will service the problem for a fee to be determined at the time of service.

MedRx has supplied with every system Microsoft Backup. MedRx strongly recommends that you backup your database daily to insure no loss of data.

Consult your MedRx Technical support member for other alternatives for back up.

### Components Registration

DSM PRO Serial Number _____	Light Source Serial Number _____
Probe Serial Number _____	Insert Ear Phone (Left) _____
Camera Number _____	Insert Ear Phone (Right) _____