



Installation Manual

© Copyright June 2004

TABLE OF CONTENTS

Installation of the AVANT Software and Drivers	3
Driver Installation for Windows ME	4
Driver Installation for Windows 2000	5
Driver Installation for Windows XP	7
AVANT Software Setup	9
Calibrating the System	10
Installing AVANT NOAH Module	11
Configuring HI-PRO Port	11
Limited Warranty	13
Probe Mic / HIPRO Wiring Diagram	14
USB, Power Cables and Microphone Wiring Diagram	15
Speakers, Conductors and Hand Switch Wiring Diagram	16
HIT Box Wiring Diagram	17
HIT Box Wiring Diagram without Battery Simulator Box	18
Multi Directional HIT Box Wiring Diagram	19
Multi Directional HIT Box without Battery Simulator Box	20

**TO CONNECT YOUR VIDEO OTOSCOPE SEE SEPARATE VIDEO OTOSCOPE
MANUAL SUPPLIED WITH YOUR ORDER.**

Installation of the AVANT Software and Drivers

- Insert the AVANT CD-ROM into the CD drive. Wait until the Setup program starts. If the Setup does not start, open the Windows Explorer and double-click on the CD-ROM icon.
- On the Setup screen, choose ***Install AVANT***. Follow the instructions on the screen. The installation may ask you to update DirectX. If it does, follow the DirectX setup instructions on the screen.
- Reboot the computer.
- Follow the **Driver Installation** instructions to install the drivers for *your operating system*.
- Follow the **AVANT Setup** instruction for setting up the software before the first use.

Driver Installation for Windows ME

1. Close all running applications.
2. Insert the AVANT CD-ROM into CD drive. If the AVANT Setup screen appears, exit it by clicking on the *Exit* button.
3. Connect the power source to the AVANT unit.
4. Plug the USB cable into the AVANT and into any available USB port on your computer.
5. Windows should find and install three new devices: two FTDI USB serial ports and SoundBlaster Audigy 2 NX sound card.
 - 5.1. If Windows does not find new hardware, it usually means that USB support is not enabled on your machine. Check the machine BIOS settings and enable USB if necessary (you may need the help of a computer technician.)
6. Wait until Windows finds new hardware and displays the *Hardware Wizard* screen.
7. Make sure *Automatic search for a better driver* is selected and then click *Next*.
8. Wait until Windows scans the CD-ROM, finds the driver, and installs it. Click *Finish* when prompted.
9. Repeat the last three steps when Windows finds more hardware to install.
10. Once Windows has finished installing the drivers, run the *Setup* program from the AVANT Installation disk. From the Setup screen, choose *Update Audio Driver*. Follow the instructions on the screen. Note: Updating the audio driver may take few minutes.

Please follow the AVANT Setup instructions to complete the installation.

Driver Installation for Windows 2000

1. Close all running applications.
2. Insert the AVANT CD-Rom into CD drive. If the AVANT Setup screen appears, exit it by clicking on *Exit*.
3. Connect the power source to the AVANT unit.
4. Plug the USB cable into the AVANT and into any available USB port on your computer.
5. Windows should find and install three new devices: two FTDI USB serial ports and SoundBlaster Audigy 2 NX sound card.
 - 5.1. If Windows does not find new hardware, it usually means that USB support is not enabled on your machine. Check the machine BIOS settings and enable USB if necessary (you may need the help of a computer technician.)
6. Wait until Windows finds new hardware and displays the *Hardware Wizard* screen.
7. Make sure ***Install the software automatically*** is selected and then click *Next*.
8. Wait until Windows scans the CD-ROM, finds the driver, and installs it. Click *Finish* when prompted.
9. Repeat the last three steps when Windows finds more hardware to install.
10. By default Windows 2000 installs a generic driver for the USB sound card. This driver is incorrect and therefore has to be replaced.
11. To replace the driver, click on the *Start* icon, then click with the right mouse button on the ***My Computer*** icon, and then choose (left-click) ***Properties*** from the menu. The *System Properties* screen will open.
12. On the *System Properties* screen choose ***Hardware*** tab and then click on ***Device Manager***.
13. In the device list, click on the [+] next to *Sound, video and game controllers*. In the expanded list, double-click on the *USB Audio Device*.
14. On the Device properties screen, choose the *Driver* tab, and then click on *Update Driver*.
15. Follow the instruction on the screen. On the *Hardware Wizard* screen, make sure ***Install the Software Automatically*** is selected and click *Next*. Wait until Windows installs the drivers. Reboot the computer if asked.
16. Once Windows has finished installing the drivers, run the ***Setup*** program from the AVANT Installation disk. From the Setup screen, choose ***Update Audio Driver***. Follow the instructions on the screen. Note: Updating the audio driver may take few minutes.

17. If you ever change the USB port on your computer for the AVANT, you will need to re-install the drivers for this port. When you plug the USB cable to a different USB port, Windows will prompt you to install new hardware. Follow the Driver Installation instructions to reinstall the drivers.

Please follow the AVANT Setup instructions to complete the installation.

Driver Installation for Windows XP

1. Close all running applications.
2. Insert the AVANT CD-ROM into CD drive. If the AVANT Setup screen appears, exit it by clicking on *Exit*.
3. Connect the power source to the AVANT unit.
4. Plug the USB cable into the AVANT and into any available USB port on your computer.
5. Windows should find and install three new devices: two FTDI USB serial ports and SoundBlaster Audigy 2 NX sound card.
 - 5.1. If Windows does not find new hardware, it usually means that USB support is not enabled on your machine. Check the machine BIOS settings and enable USB if necessary (you may need the help of a computer technician.)
6. Wait until Windows finds new hardware and displays the *Hardware Wizard* screen.
7. Make sure ***Install the software automatically*** is selected and then click *Next*.
 - 7.1. If the Logo Testing compatibility prompt appears, ignore it by clicking on ***Continue Anyway***.
8. Wait until Windows scans the CD-ROM, finds the driver, and installs it. Click *Finish* when prompted.
9. Repeat the last three steps when Windows finds more hardware to install.
10. By default Windows XP installs a generic driver for the USB sound card. This driver is incorrect and therefore has to be replaced.
11. To replace the driver, click on the *Start* icon, then click with the right mouse button on the ***My Computer*** icon, and then choose (left-click) ***Properties*** from the menu. The *System Properties* screen will open.
12. On the *System Properties* screen choose ***Hardware*** tab and then click on ***Device Manager***.
13. In the device list, click on the [+] next to *Sound, video and game controllers*. In the expanded list, double-click on the *USB Audio Device*.
14. On the Device properties screen, choose the *Driver* tab, and then click on *Update Driver*.
15. Follow the instruction on the screen. On the *Hardware Wizard* screen, make sure ***Install the Software Automatically*** is selected and click *Next*. Wait until Windows installs the drivers. Reboot the computer if asked.

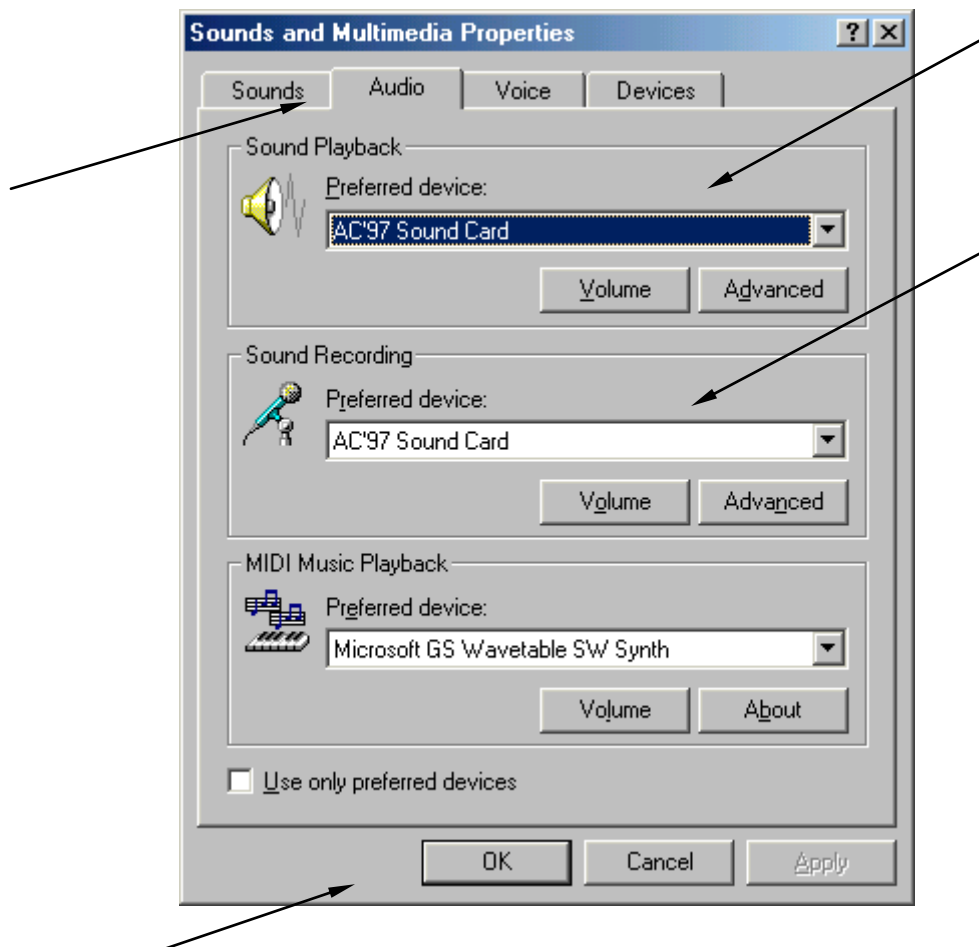
16. Once Windows has finished installing the drivers, run the *Setup* program from the AVANT Installation disk. From the Setup screen, choose *Update Audio Driver*. Follow the instructions on the screen. Note: Updating the audio driver may take few minutes.
17. If you ever change the USB port on your computer for the AVANT, you will need to re-install the drivers for this port. When you plug the USB cable to a different USB port, Windows will prompt you to install new hardware. Follow the Driver Installation instructions to reinstall the drivers.

Please follow the AVANT Setup instructions to complete the installation.

AVANT Software Setup

The AVANT Software and the drivers must be installed prior to following this document

- Start the AVANT software by clicking on the AVANT icon on Windows desktop.
- From the AVANT main screen choose *File*, and then choose *Advanced Options*.
- On the *Advanced Option* screen choose the *Audio* tab.
- On the *Audio* page, click on *Audio Properties* to open *Sound and Multimedia Properties* screen.
- On the *Sound and Multimedia Properties* screen, make sure the *Audio* page is selected.
- Click the *Preferred device* box for both *Sound Playback* and *Sound Recording*. In both cases make sure to select the preferred devices **different** from the *Sound Blaster Audigy 2 NX*. Normally they should be set to the sound card that is installed on your computer. If you do not have a sound card installed on your computer, leave the preferred devices set to *Sound Blaster Audigy 2 NX*. Once the preferred devices are set, click on the *OK* button.



(Note: Windows uses the preferred devices for regular needs, such as playing back event sounds or music files. Setting the preferred device different from the one used by the AVANT will prevent Windows and AVANT trying to use the same sound device at the same time.)

- On the AVANT *Audio* properties page, click on the *Output Device* box and select *Creative SB Audigy 2 NX* from the list.
- Make sure the *Input Device* and *Mixer Device* are also set to *Sound Blaster Audigy 2 NX*. If not, click on the appropriate box and change the device.
- Leave *Input Line* set to *<Default Line>*.
- When finished, click on *OK*.

Calibrating the System

- From the AVANT main screen, choose *Functions*, then *Calibrate*, and then *System*. The Calibration Screen will open.
- On the Calibration screen, click on *Start* and wait until calibration is finished. Click on *Close* to exit the calibration screen.
- From the AVANT main screen, choose *Functions*, then *Calibrate*, and then *Load Calibration Files*. The Load Calibration screen will open.
- Insert the AVANT Calibration CD-ROM disk into CD-ROM drive.
- Click *Load* on the Load Calibration screen. The program will search for the calibration files and load them.

Installing AVANT NOAH Module

- Insert the AVANT CD-ROM into CD drive.
- Start NOAH.
- Follow the NOAH Module Installation procedure.
- When asked to provide the path to a new module, type: *D:\NOAH*
(Note: D: is the actual CD-ROM drive letter. On some systems it may be different.)
(Note: In NOAH 3 it is necessary to point at *Install.ini* file when prompted.)
- Wait until NOAH installs the module.

Configuring HI-PRO Port

- If your AVANT has built-in HIPRO board, please follow the *Configuring HI-PRO Port* document.

Configuring HI-PRO Port

Prior to following this document, the AVANT drivers must be installed and AVANT software installed and configured

HI-PRO cannot use COM ports higher than COM3, therefore the HI-PRO port has to be configured to use one of the first three serial ports.

18. To detect which port will be used with the HI-PRO, start the AVANT by clicking on the AVANT icon on the desktop. From the AVANT front screen choose ***File***, and then ***Advanced Options***.
19. On the *Advanced Options* screen click on the ***Detect Port***. Wait until the port is detected.
20. Note which port has been detected (e.g. COM7.) Close the *Advanced Options* screen and exit the AVANT.
21. Click with the right mouse button on the ***My Computer*** icon, and then choose (left-click) ***Properties*** from the menu. The *System Properties* screen will open.
 - 21.1. *My Computer* icon is located either on the Windows Desktop, or in the Start menu on Windows XP.
22. Choose ***Device Manager***.
 - 22.1. In Windows 2000 and Windows XP *Device Manager* is located on the *Hardware* panel.
23. In the device list, click on the [+] sign next to ***Ports (COM & LPT)***. A list of ports will expand.

24. In the expanded list, locate **USB Serial Port** with the number different from the one detected by the AVANT (e.g. if COM6 and COM7 are listed as USB Serial Ports, and COM7 has been detected by the AVANT, select COM6.)
25. Double-click on the selected **USB Serial Port**.
26. Choose **Port Settings** tab.
27. Choose **Advanced**.
28. Change the **COM Port Number** to a number within COM1-COM4 range
(COM3 not recommended.)
 - 28.1. If the port says *In Use*, ignore it.
29. Choose *Ok* and then close the *System Properties*.
30. Check the HI-PRO communications by running the HI-PRO test. HI-PRO test can be found on the AVANT CD-ROM or in your fitting software.

Limited Warranty

MedRx, Inc warrants the **AVANT** System to be free from defects in material and workmanship for one year from the time of purchase. If this system fails to perform as specified during this period, the purchaser is responsible for calling MedRx at (888) 392-1234. The company's representative will advise the owner to either return specific components or the entire system to:

MedRx Inc.
1200 Starkey Road, #105
Largo, FL 33771

MedRx will repair or replace any defective parts, fully test the system and/or components and ship the system promptly back to the owner. There is no cost for this warranty service, provided the system is one year old or less and has not been misused, abused or damaged. Such damage includes, but is not limited to, dropping, exposure to excessive heat greater than 100°F and water/liquid damage.

Repair or replacement of the system as provided under this warranty is the sole and exclusive remedy of the purchaser. MedRx shall not be liable for any consequential or incidental damages, or for breach of any express or implied warranty. Except to the extent of applicable law, any implied warranty, merchantability or fitness of this product is limited to the duration of this warranty.

MedRx will, at its discretion, service and repair out of warranty components at the purchaser's request, charging for parts and labor as necessary.

The limited warranty is deemed void if software or hardware is installed on the **AVANT** which is not pre-approved by MedRx, Inc. Approved software includes NOAH and HIMSA approved hearing aid manufacture programming modules for fitting hearing aids. Installation of HIPRO box is approved.

MedRx, Inc is not responsible for problems resulting from installation of unapproved software or hardware. In the event of unapproved software or hardware installed on the system causing a conflict with the **AVANT** functions, MedRx will service the problem for a fee to be determined at the time of service.

MedRx has supplied with every system Microsoft Backup. MedRx strongly recommends that you backup your database daily to insure no loss of data.

Consult your MedRx Technical support member for other alternatives for back up.

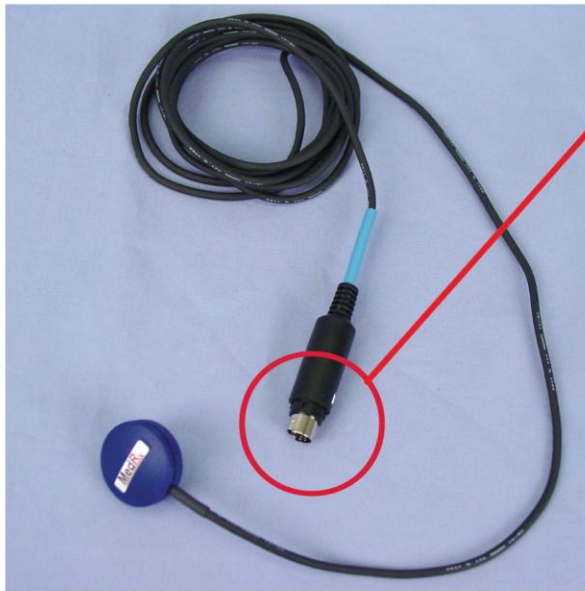
Probe Mic / HIPRO Wiring Diagram



Red Probe Mic
Right



HI-Pro/Hearing Aid Cables

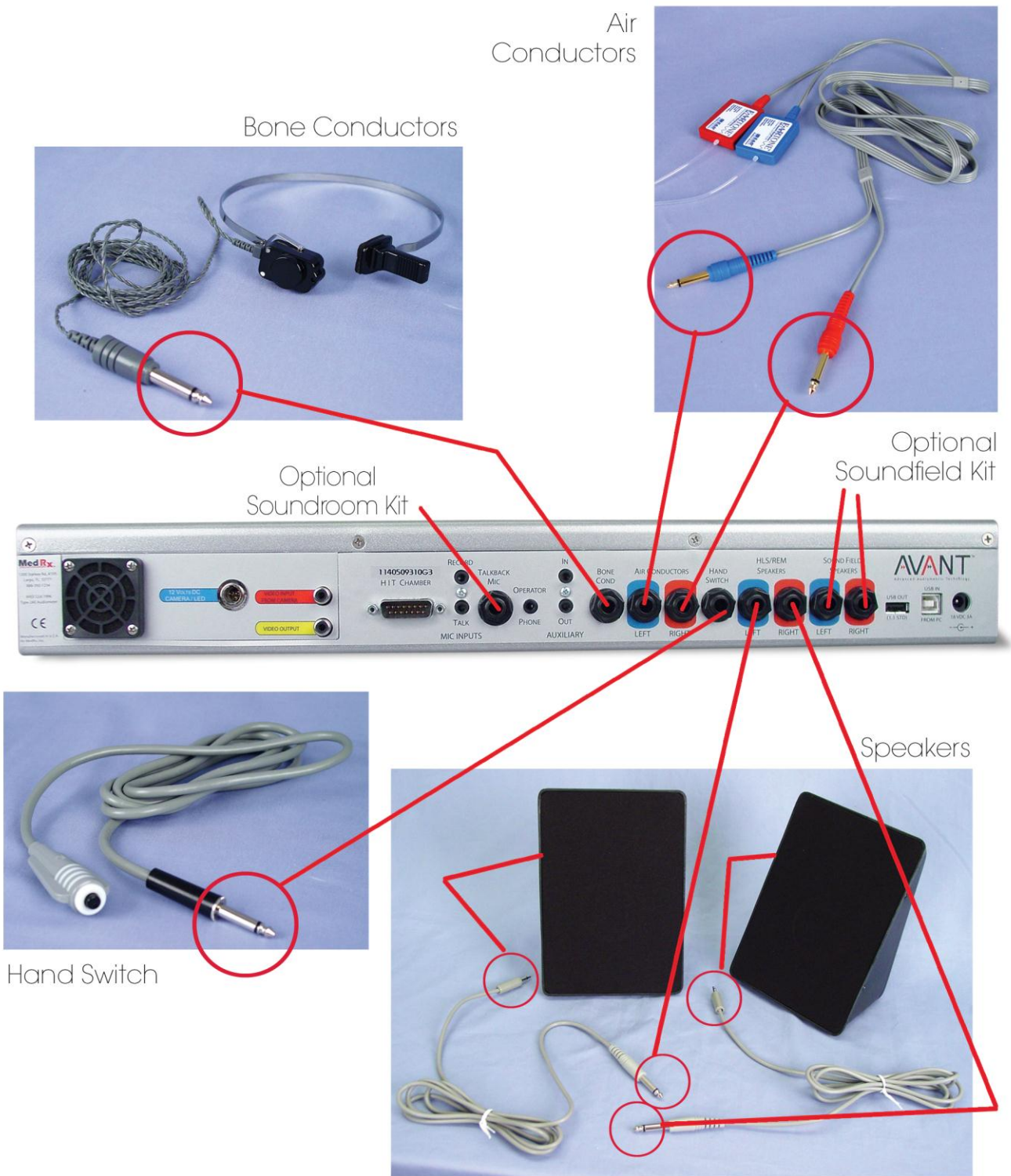


Blue Probe Mic
Left

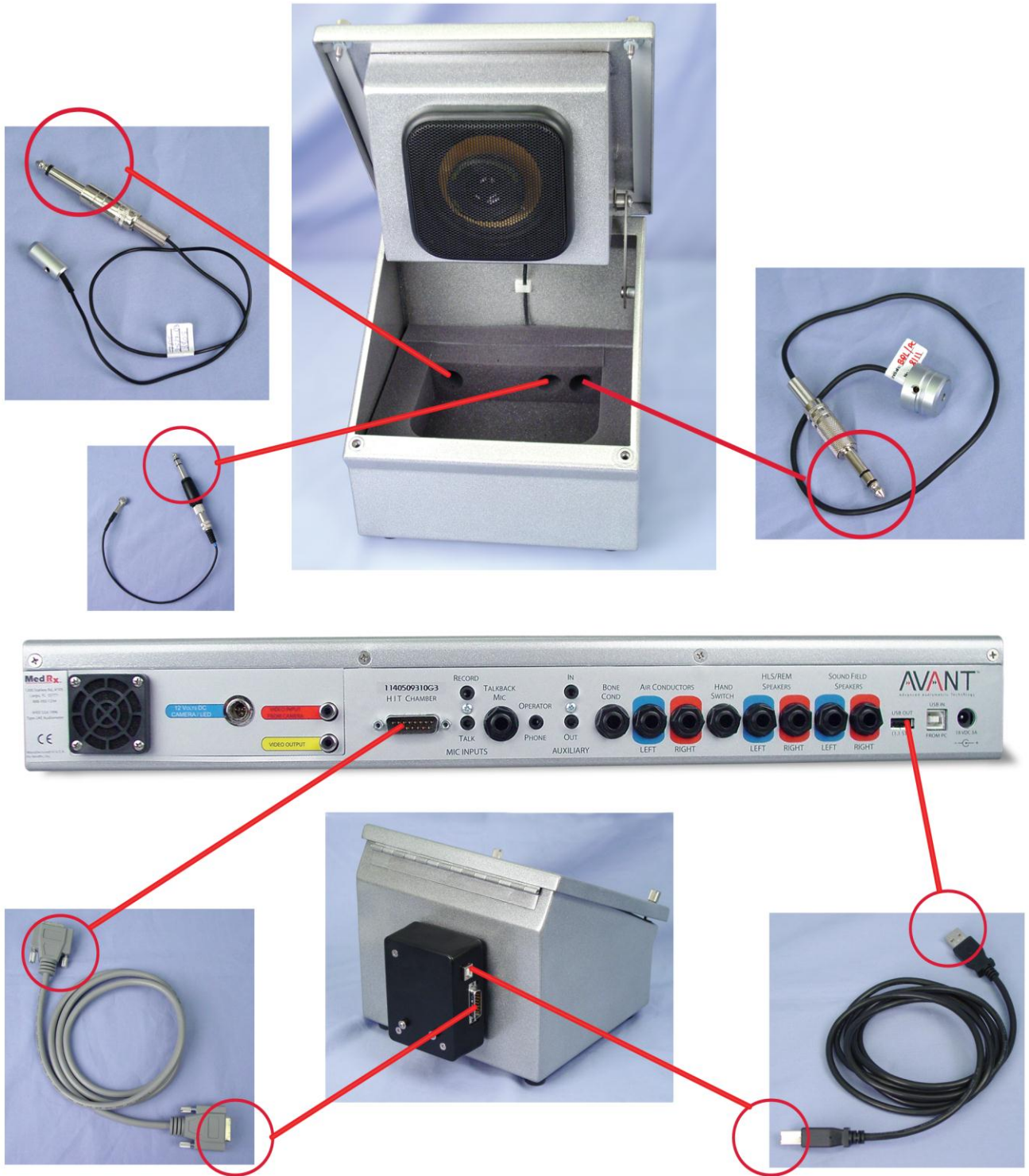
USB, Power Cables and Microphone Wiring Diagram



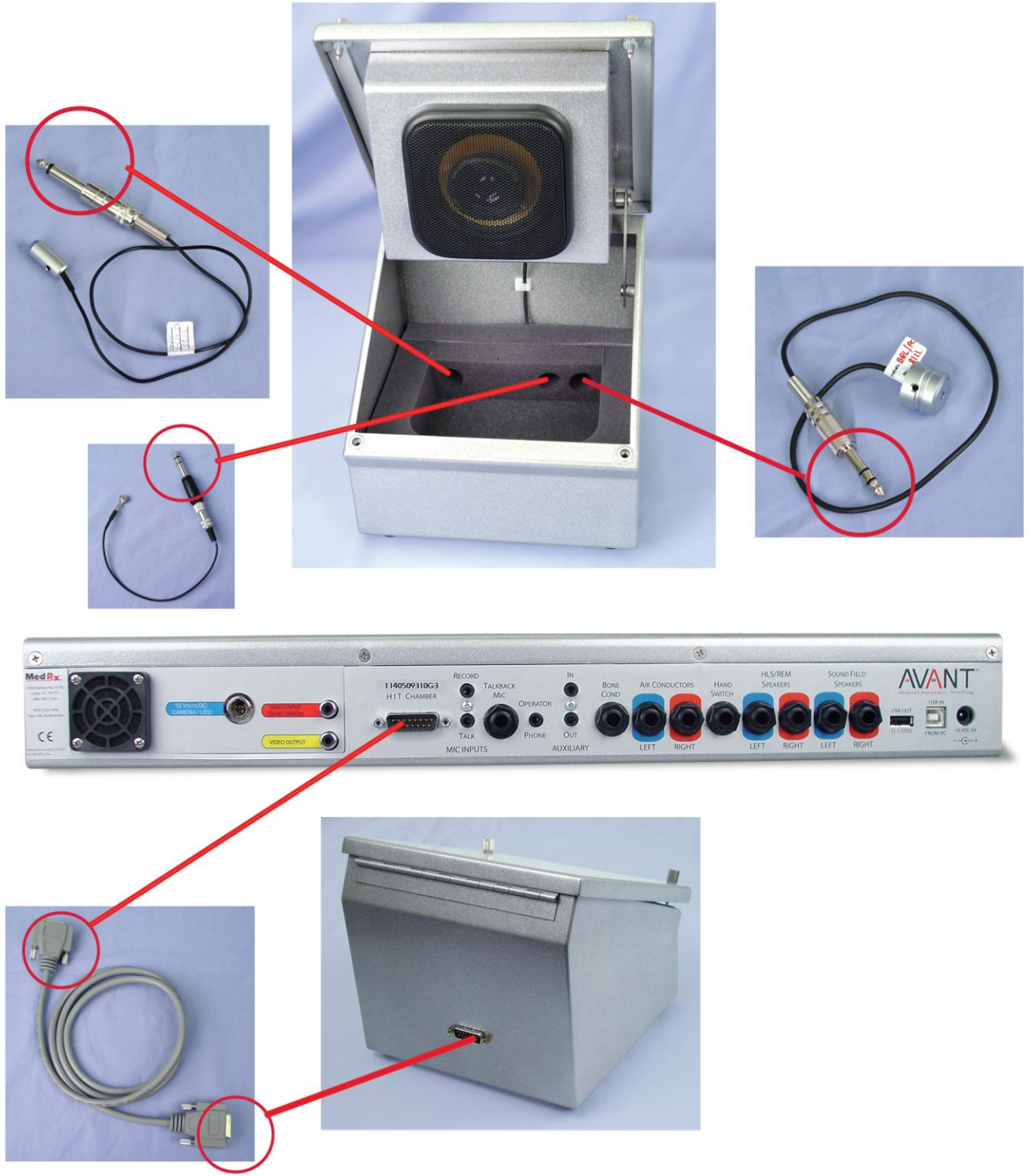
Speakers, Conductors and Hand Switch Wiring Diagram



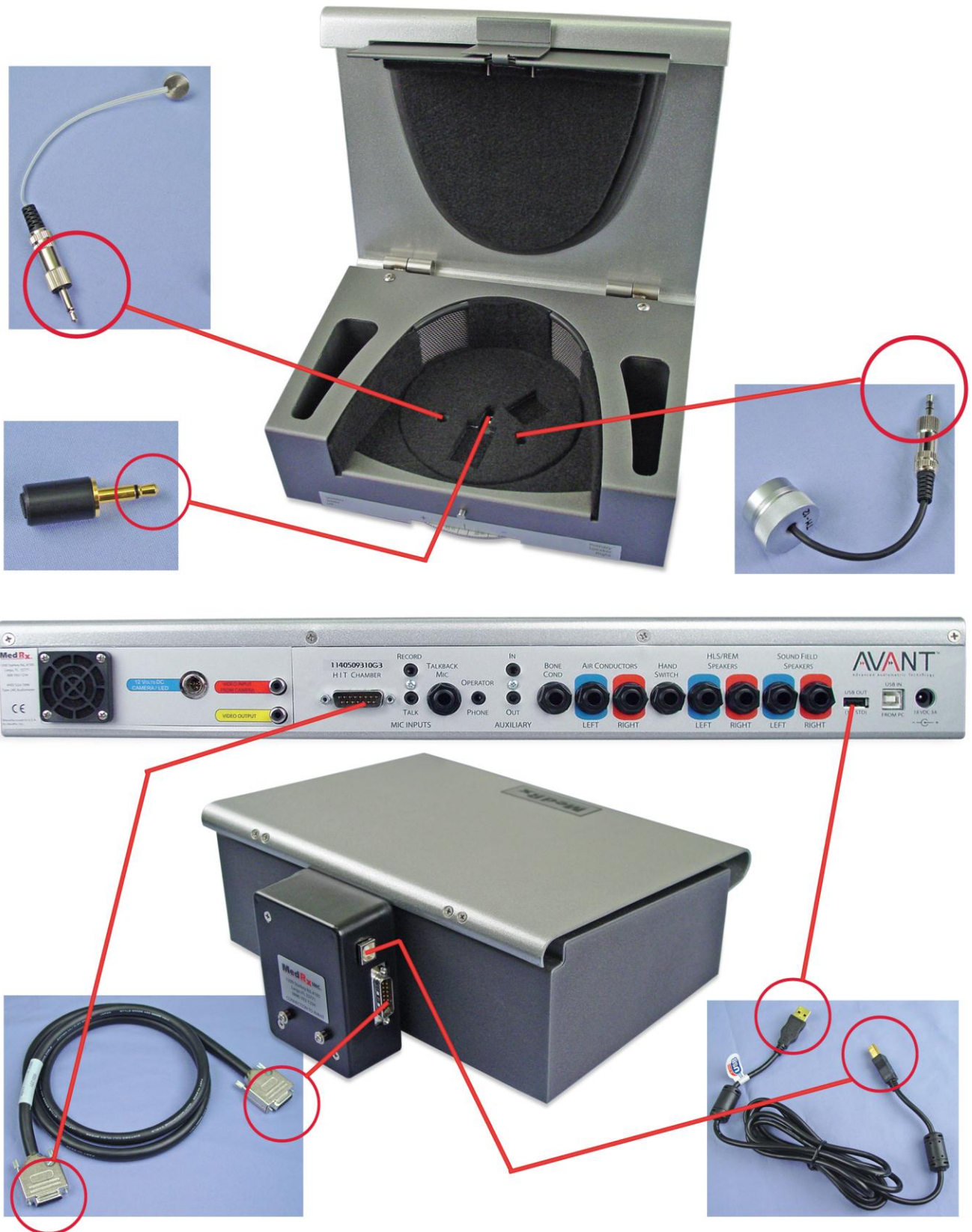
HIT Box Wiring Diagram



HIT Box Wiring Diagram without Battery Simulator Box



Optional Upgrade - Multi Directional HIT Box Wiring Diagram



Multi Directional HIT Box without Battery Simulator Box

