

INSTALLATION MANUAL

AVANT[™]
Advanced Audiometric Technology



MedRx INC.[®]

This Page Intentionally Left Blank

Contents

Getting to Know Your AVANT™	4
Software Installation	5
Driver Installation	7
Additional Hardware Setup Procedures	10
Calibration	12
Limited Warranty	14



#0086

MedRx INC®

www.medrx-usa.com

1200 Starkey Rd., #105, Largo FL 33771

Toll Free: (888) 392-1234 • (727) 584-9600

Fax: (727) 584-9602 • Email: medrx@medrx-usa.com

MedRx's Authorized Representative in Europe

(Regulatory affairs only)

Emergo Europe, Molenstraat 15

2513 BH The Hague, The Netherlands

Tel: (31) (0) 70 345-8570 • Fax: (31) (0) 70 346-7299

Getting to Know Your AVANT™

The AVANT™ represents a new era of precision in-situ verification for your office. Compact yet rugged, this PC-Based system is USB powered and supports all ANSI and IEC Real Ear tests. The AVANT™ combines diagnostic audiometry, Real Ear Measurement, Live Speech Mapping, a HiPRO Hearing Instrument programming interface and add-on capability for Video Otoscopy and a Hearing Instrument Test chamber. The following section of this manual will familiarize you with the physical features and accessories of the AVANT™ system.



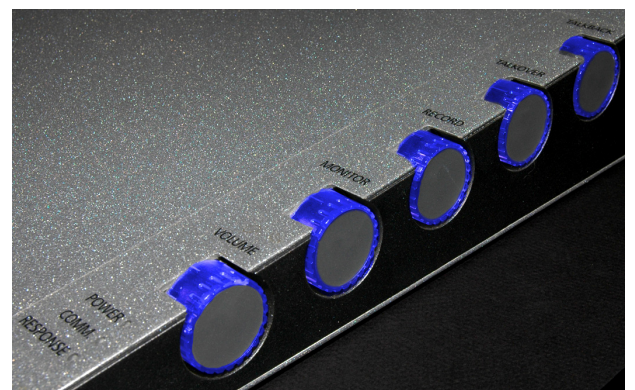
Front View



Rear View



Left Side

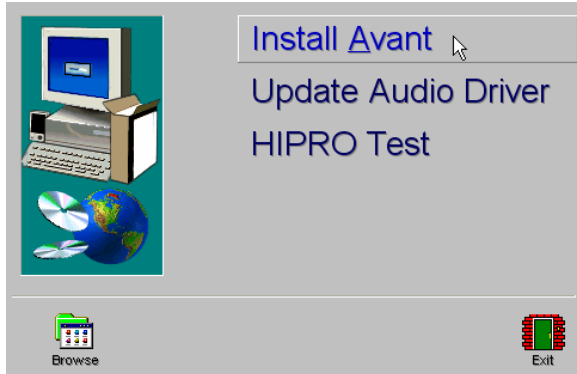


Right Side

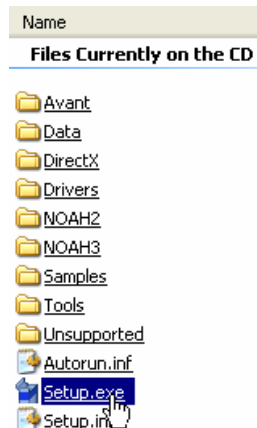
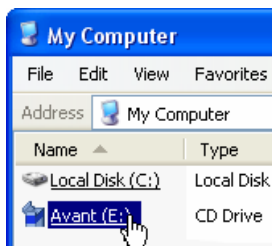
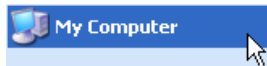
Software Installation

Do Not Plug in the AVANT™ USB Cable yet!

1. Insert the AVANT™ CD-ROM into the CD drive. Wait until the **Setup program starts**.

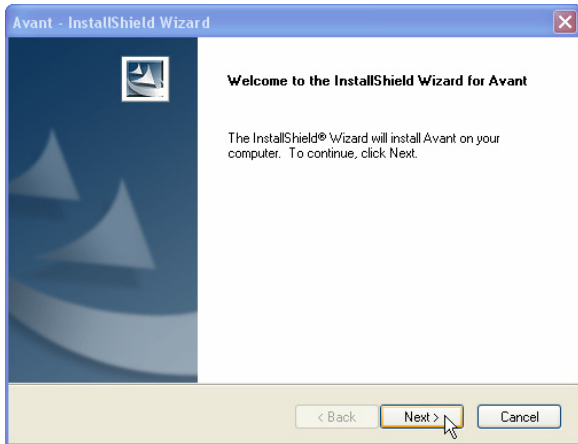


2. On the Setup screen, choose **Install Avant**.

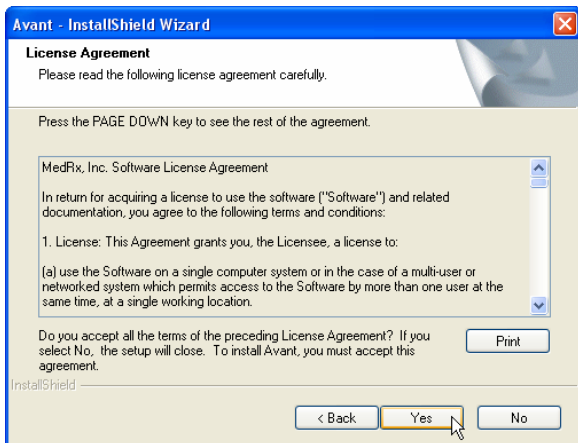


If the Setup program does not automatically start,

- Click **Start**
- Click **My Computer**
- Double Click on the **CD Drive** icon
- This should open the AVANT™ Setup screen shown below.
- If it does not, Windows will display a list of files on the CD ROM
 - Double Click **Setup.exe**



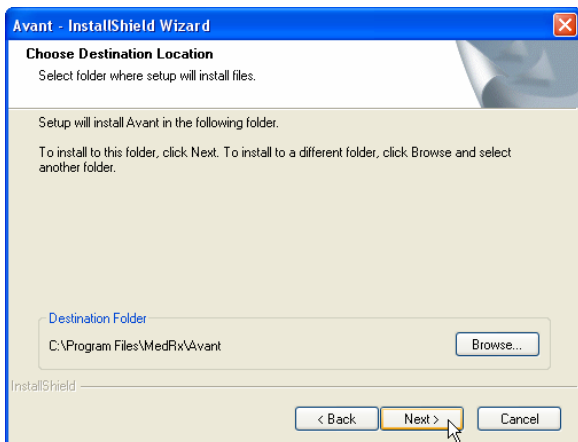
3. This is the Welcome screen.
 - To continue, Click **Next**



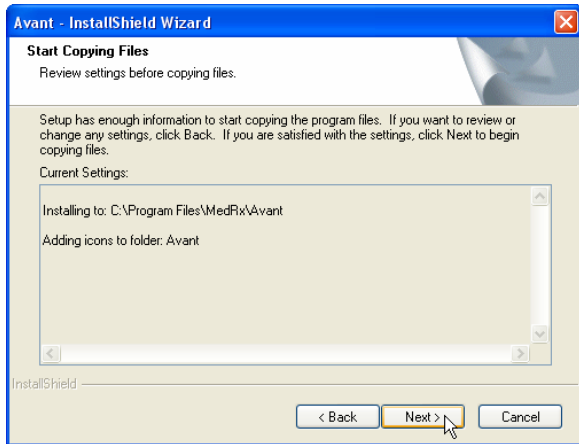
4. Read the Software License Agreement. This important document defines the acceptable usage of the AVANT™ software.

After reading the Agreement,

- Click **Yes**

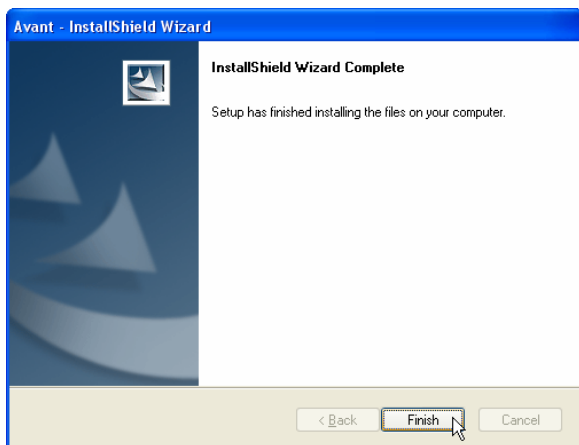


5. This screen indicates the location of the program files.
 - a. Click **Next**



6. This screen summarizes the installation configuration.

- To continue,
 - a. Click **Next**
- To make changes,
 - a. Click **Back**



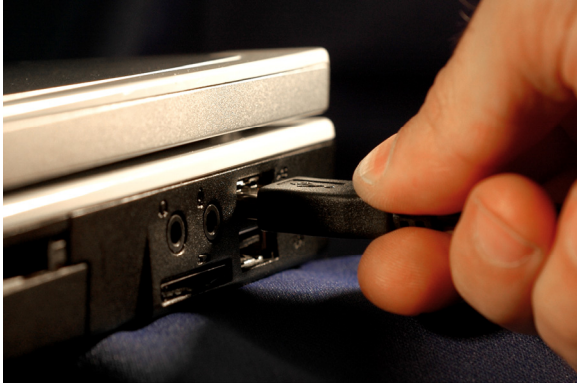
7. When the installation is complete, click **Finish**.

Driver Installation



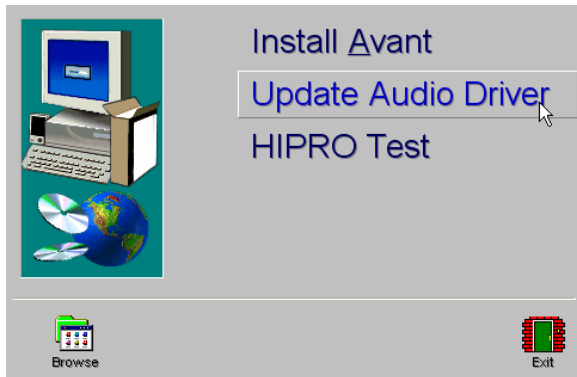
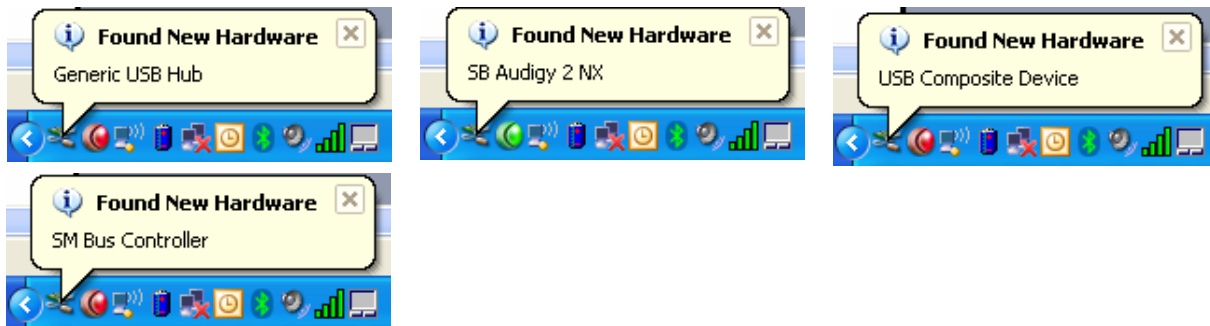
1. Connect the following cables to the AVANT™ as shown:

- **Power (18VDC 3A)**
- **USB IN (From PC)**

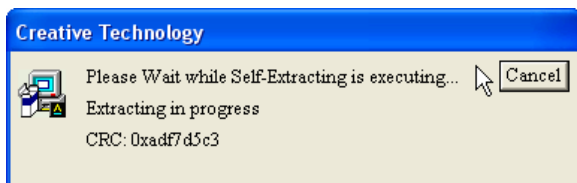


2. Connect the USB cable from the AVANT™ to your computer as shown.
 - Note that the drivers you will install next are specific to the USB port. It is advisable to label the USB port “AVANT” to prevent connection problems should you unplug the computer in the future.

Wait for Windows to install default drivers. During this process, you will see the following prompts in your system tray (lower right corner of the screen).



1. After the Windows drivers have been installed,
 - Click **Update Audio Drivers**



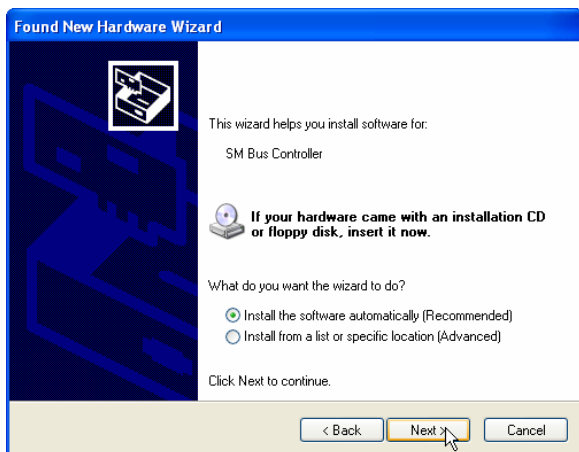
2. The Sound Blaster drivers will extract. This takes a few minutes, during which time you will see this screen. **NO ACTION IS REQUIRED.**



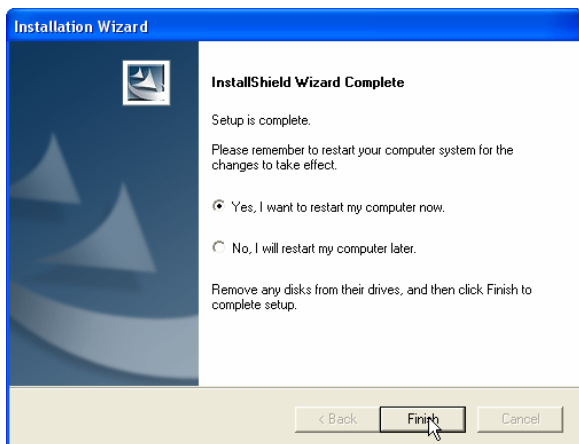
3. When this screen appears,
 - Click **OK**



4. When this window appears,
 - Select **"No, not at this time"**
 - Click **Next**.



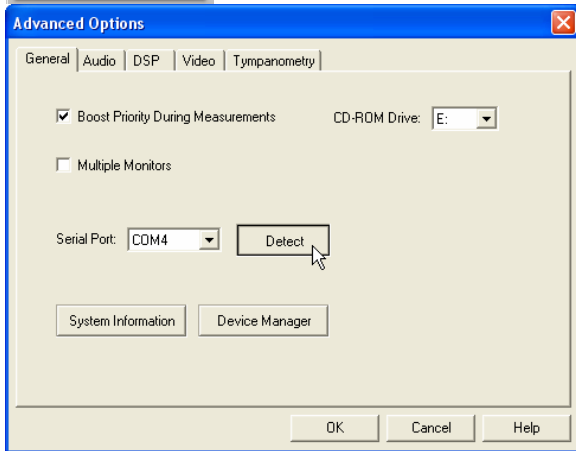
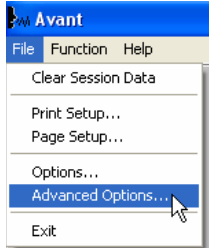
5. When this screen appears,
 - Select **"Install the software automatically (recommended)"**
 - Click **Next**.



6. When the driver installation is complete, this screen will appear. In order to complete the installation of the drivers, the system must be re-started.
 - Save all open documents.
 - Close all open programs.
 - Select **Yes, I want to restart my computer now.**
 - Click **Finish**.

Detect COM Port

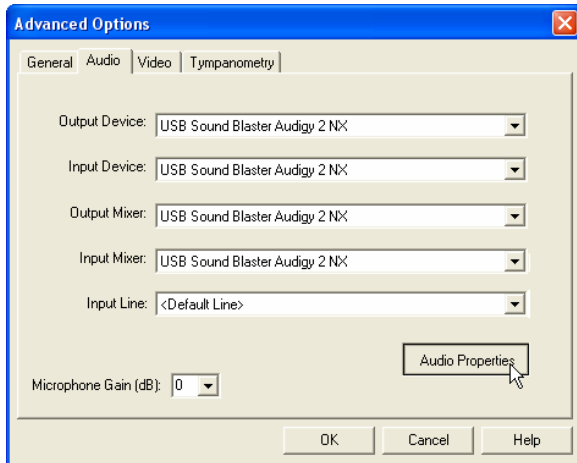
The next step in configuring your AVANT™ for testing and fitting is to detect the COM port. To do this, follow the steps below:



1. Launch the AVANT™ software by double-clicking AVANT shortcut on your Windows Desktop.
2. From the AVANT™ main screen,
 - Click **File**.
 - Click **Advanced Options**.
3. From the General tab,
 - Click **Detect**.
 - This process may take a few minutes.
 - Note, the Hi-PRO will only function on COM 1,2, 3 or 4. If the software detects a COM port above 4, call MedRx Technical Support at (888) 392-1234 for assistance in setting the COM port to an appropriate value.

Check Audio Settings

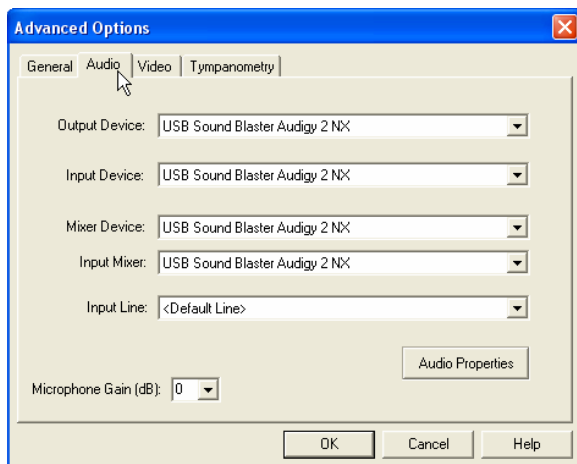
In order for the AVANT™ to function properly, the sound card inside the device must be properly identified to Windows. To confirm the settings are correct, follow the steps below:



1. With the Advanced Options screen still open, click on the **Audio** tab
2. Next you need to set the Default Windows sound card settings. This will route all non-AVANT™ Windows sounds to the internal sound card of your computer. These sounds include event notifications such as new e-mail and error warnings as well as audio and video playback. To configure the default settings,
 - Click **Audio Properties**



3. Using the pull downs, set the Sound Playback and Sound Recording Default devices to the internal sound card of your computer.
 - **NOTE:** The internal sound card on your computer will likely not have the same name as this screen shot. Consult your computer's documentation for the name of the internal sound card and set this control accordingly.

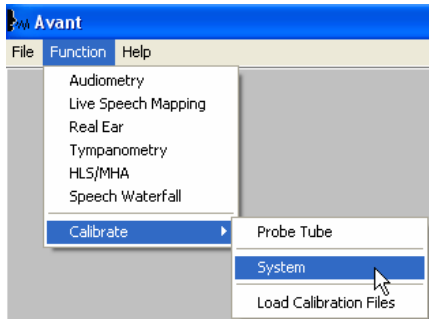


4. With the Advanced Options screen still open, click on the **Audio** tab again.
 - The settings should be identical to the ones shown on the left.
 - If they are different, use the pull-down menus to adjust them.
 - Once the settings are correct click **OK**
 - Should you encounter any difficulties or receive error messages during the installation, please contact MedRx Technical support at (888) 392-1234 Monday – Thursday 9:00 am – 5:30 pm Eastern time, or Friday 9:00 am – 5:00 pm Eastern time.

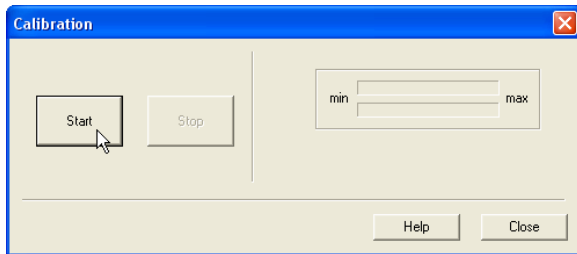
Calibration

System Calibration

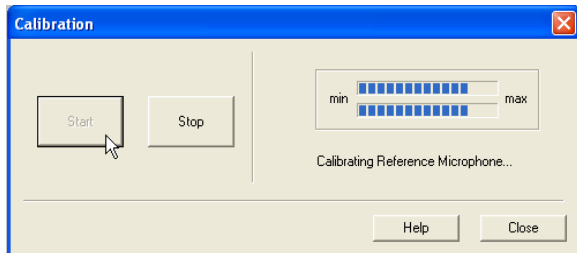
Before using the AVANT™, the internal sound card must be calibrated to the computer. To do this, follow the steps below:



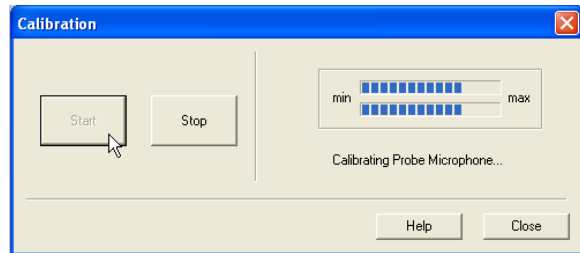
1. From the AVANT™ main screen,
 - Click **Function**.
 - Click **Calibrate**.
 - Click **System**.



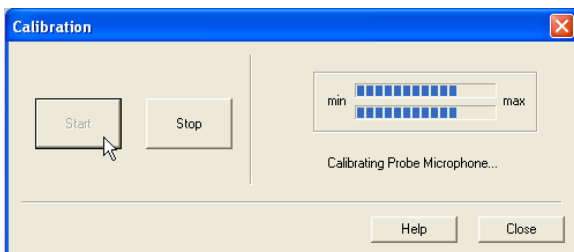
2. When this window appears, click **Start**
3. The status of the calibration will be shown on the right half of the screen as shown in the images below.
 - **No Action is Required.**



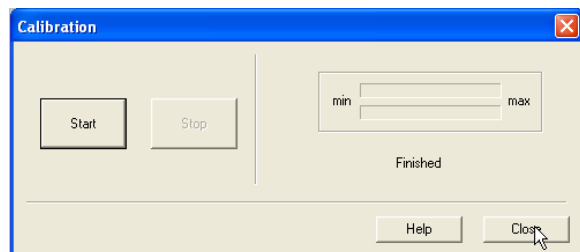
System Calibration Step 1



System Calibration Step 2



System Calibration Step 3



System Calibration Step 4

When the System Calibration finishes (step 4 above), click **Close**.

Loading the Calibration Files

Each AVANT™ is calibrated in compliance with current ANSI and IEC Audiometry and Real Ear Measurement standards. This calibration procedure results in a series of files that the AVANT™ software reads to keep the hardware in calibration. These files are supplied on a CD bearing the same serial number as your AVANT™ device.

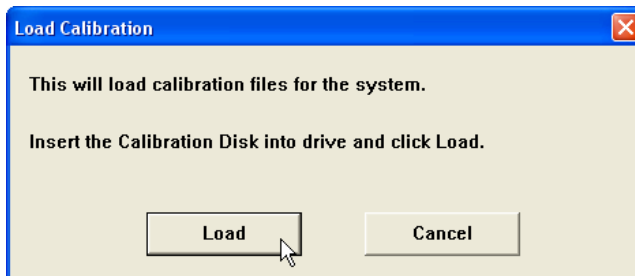
The final step before using your AVANT™ is to load these device-specific calibration files onto the computer used to control the AVANT™ device.



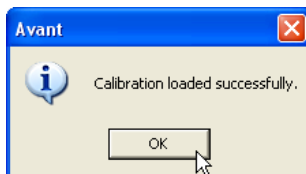
1. Place the AVANT™ Calibration CD in the computer's CD Drive.
 - Note that the CD bears the serial number for a specific AVANT. If you have more than one piece of MedRx equipment, be sure to match the serial numbers on the Calibration CD with the serial number on the device.

After confirming the serial numbers match, click

- **Function.**
- **Calibrate.**
- **Load Calibration.**



2. After a few seconds, the CD will "spin up" and this message will appear.
 - **Click Load.**



3. When the files are finished being loaded, this message will appear.
 - Click **OK** to complete loading the calibration.

Congratulations

Your AVANT™ system is now set up and ready to use to verify your hearing instrument fittings. Please consult the AVANT™ Training Manual and the Interactive Help system within the software for instructions and procedures. This Installation Manual as well as the AVANT™ Training Manual are included in PDF format on a CD ROM in the original AVANT™ packaging.

In addition, context-sensitive, interactive Help is always available by pressing the F1 key, or by clicking the Help icon or Help menu.

Limited Warranty

MedRx, Inc warrants the AVANT™ System to be free from defects in material and workmanship for one year from the time of purchase. If this system fails to perform as specified during this period, the purchaser is responsible for calling MedRx at (888) 392-1234. The company's representative will advise the owner to either return specific components or the entire system to:

MedRx, Inc.

1200 Starkey Road #105 Largo, FL 33771

MedRx will repair or replace any defective parts, fully test the system and/or components and ship the system promptly back to the owner. There is no cost for this warranty service, provided the system is one year old or less and has not been misused, abused or damaged. Such damage includes, but is not limited to, dropping, exposure to excessive heat greater than 100°F and water/liquid damage.

Repair or replacement of the system as provided under this warranty is the sole and exclusive remedy of the purchaser. MedRx shall not be liable for any consequential or incidental damages, or for breach of any express or implied warranty. Except to the extent of applicable law, any implied warranty, merchantability or fitness of this product is limited to the duration of this warranty.

MedRx will, at its discretion, service and repair out of warranty components at the purchaser's request, charging for parts and labor as necessary.

The limited warranty is deemed void if software or hardware is installed on the AVANT™ which is not pre-approved by MedRx, Inc. Approved software includes NOAH™ and HIMSA approved hearing aid manufacturer programming modules for fitting hearing aids.

MedRx, Inc is not responsible for problems resulting from installation of unapproved software or hardware. In the event of unapproved software or hardware installed on the system causing a conflict with the AVANT™ functions, MedRx will service the problem for a fee to be determined at the time of service.

Consult your MedRx Technical support member for other alternatives for back up.



www.medrx-usa.com

1200 Starkey Rd., #105, Largo FL 33771
Toll Free: (888) 392-1234 • (727) 584-9600
Fax: (727) 584-9602 • Email: medrx@medrx-usa.com

MedRx's Authorized Representative in Europe

(Regulatory affairs only)

Emergo Europe, Molenstraat 15
2513 BH The Hague, The Netherlands
Tel: (31) (0) 70 345-8570 • Fax: (31) (0) 70 346-7299