

# INSTALLATION MANUAL

# AVANT POLAR HIT™



**MedRx** INC™

# Contents

Getting to Know your AVANT™ POLAR HIT™ .....	3
Setting up the System.....	5
Software Installation .....	6
Driver Installation .....	7
Accessories.....	8
Limited Warranty .....	9



**MedRx**INC®

[www.medrx-usa.com](http://www.medrx-usa.com)

1200 Starkey Rd., #105, Largo FL 33771

Toll Free: (888) 392-1234 • (727) 584-9600

Fax: (727) 584-9602 • Email: [medrx@medrx-usa.com](mailto:medrx@medrx-usa.com)

**MedRx's Authorized Representative in Europe**

(Regulatory affairs only)

Emergo Europe, Molenstraat 15

2513 BH The Hague, The Netherlands

Tel: (31) (0) 70 345-8570 • Fax: (31) (0) 70 346-7299

---

# Getting to Know your AVANT Polar HIT

The AVANT Polar HIT represents a new era of precision Hearing Instrument Testing for your office. Compact yet rugged, this PC-Based system is USB powered and performs all required ANSI and IEC tests. A unique feature of the Polar HIT is a rotating test pad, which allows you to generate polar plots to verify the performance of directional microphones upon delivery and following repairs. The following section of this manual will familiarize you with the physical features and accessories of the Polar HIT system.

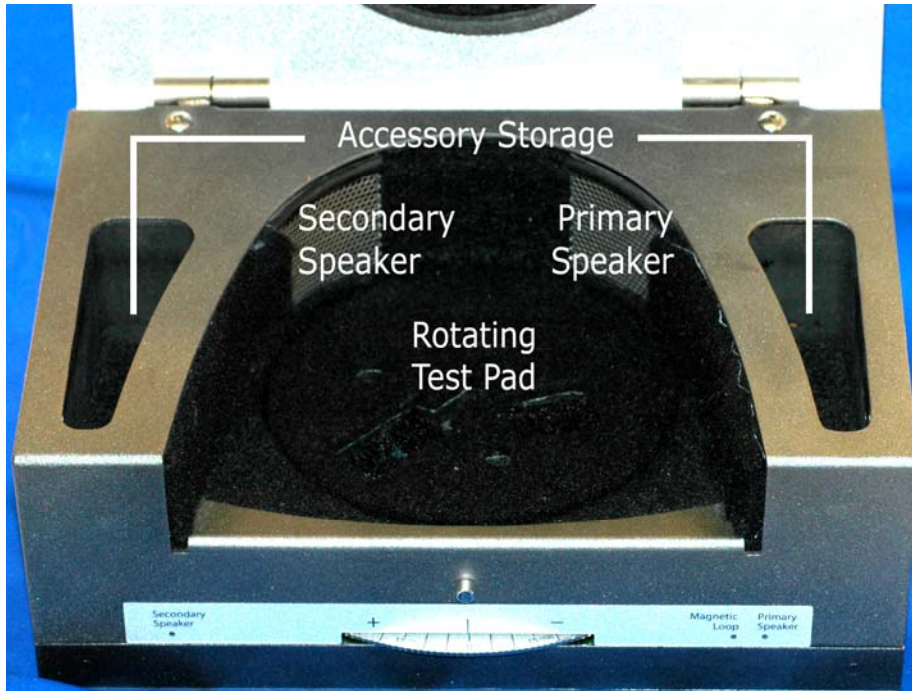


Front View

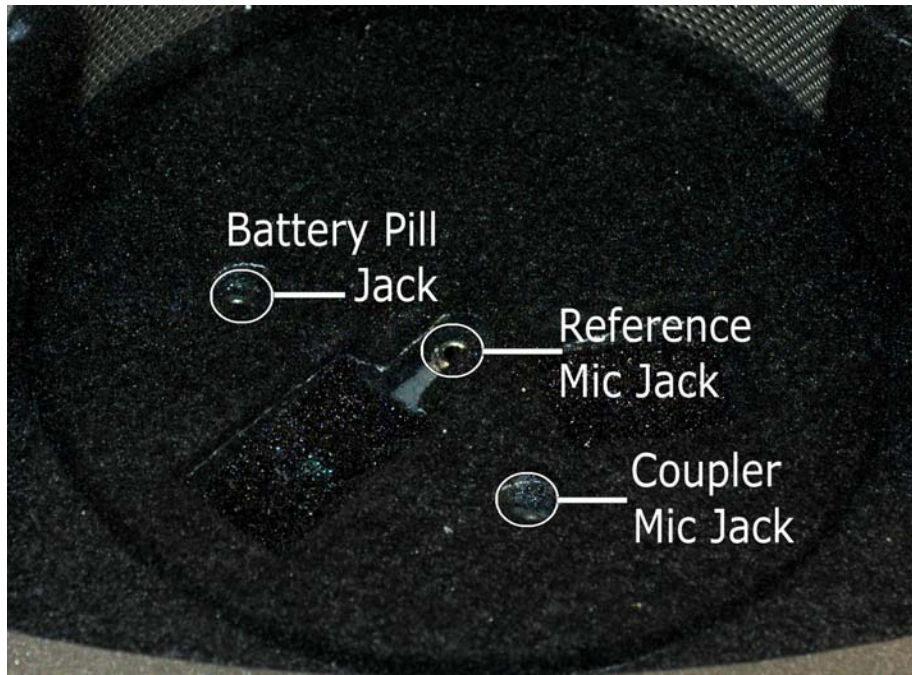


Rear View

Note the single high-speed USB 2.0 (backward compatible to USB 1.1) connector, which supplies the unit with power and transmits software control and data acquisition.



Inside the Test Chamber



Detail view of the Rotating Test Pad

---

# Setting up the System

## *Install the Microphones*

Carefully install the reference and coupler microphones as shown in the images below. Take care when handling these components, as they are delicate, precision calibrated instruments.



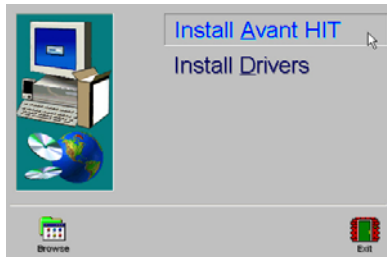
Install the Reference Microphone as shown above.



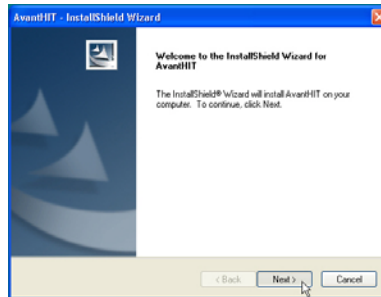
Install the Coupler Microphone as shown above.

# Software Installation

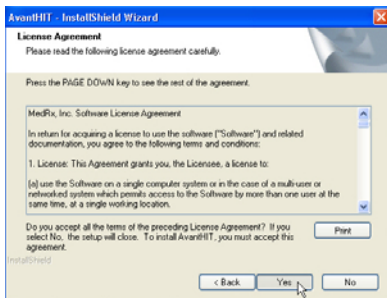
**Do Not Plug in the AVANT POLAR HIT™ USB Cable yet!**



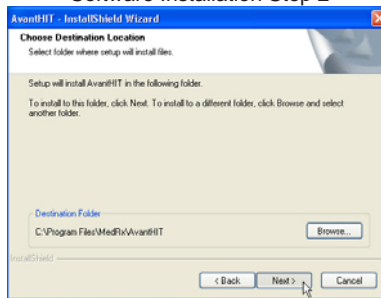
Software Installation Step 1



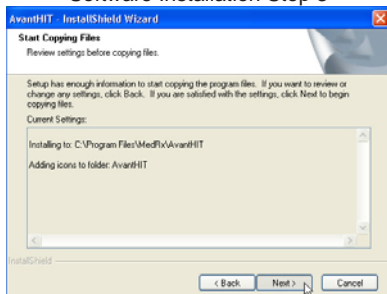
Software Installation Step 2



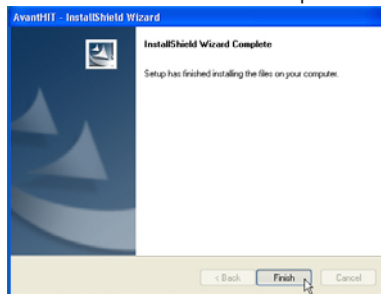
Software Installation Step 3



Software Installation Step 4



Software Installation Step 5



Software Installation Step 6

Insert the AVANT HIT™ CD-ROM into the CD drive. Wait until the **Setup program starts**.

On the Setup screen, choose **Install AVANT HIT**.

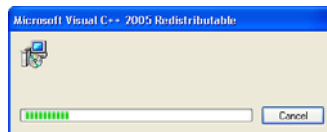
Follow the screen prompts to complete the software installation. MedRx recommends accepting all defaults.

## Notes:

If the Setup does not start, open the Windows Explorer and double-click on the CD-ROM icon.

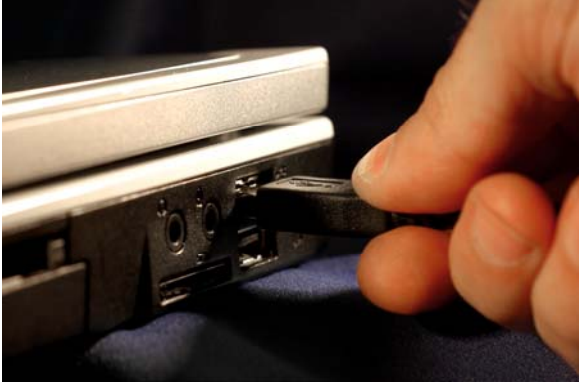
The installation may ask you to update DirectX. If it does, follow the DirectX setup instructions on the screen.

The Installation may install the Microsoft C++ Redistributable component and display the window below. This will complete automatically and does not require any action on your part.



# Driver Installation

Connect the USB cable from the AVANT POLAR HIT™ to your computer as shown below.

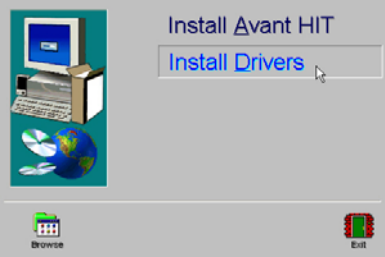


Wait for the system to copy and install default drivers. During this process, you will see the following prompts in your system tray (lower right corner of the screen).



After the default Windows driver installation is complete, choose **Install Drivers** on the AVANT HIT™ Setup screen. Follow the installation procedure (choose *Next* button) until the installation is finished.

Driver Installation Step 1



Driver Installation Step 2



Note: If the driver signature check screen appears, ignore it by clicking 'Continue Anyway'

Exit the Setup screen when the driver installation is finished.

---

# Accessories

## ***Couplers***

The system includes the couplers and adapters shown below. These will allow you to perform all ANSI and IEC Hearing Instrument Tests.

**Note:** There is a flexible o-ring inside both the 2cc Coupler and the Button Receiver Adapter. These must remain in place for the couplers to function properly. Replacement o-rings are available from MedRx.



## ***Battery Pills***

Battery Pills, also known as Battery Simulators, provide power to the hearing instrument during testing. The system includes a complete set of Battery Pills as shown below.





---

# Congratulations

Your Avant Polar HIT system is now set up and ready to test hearing instruments. Please consult the Avant Polar HIT User Manual and the Interactive Help within the software for instructions and procedures.

## Limited Warranty

MedRx, Inc warrants the AVANT POLAR HIT™ System to be free from defects in material and workmanship for one year from the time of purchase. If this system fails to perform as specified during this period, the purchaser is responsible for calling MedRx at (888) 392-1234. The company's representative will advise the owner to either return specific components or the entire system to:

**MedRx, Inc.**

**1200 Starkey Road #105**

**Largo, FL 33771**

MedRx will repair or replace any defective parts, fully test the system and/or components and ship the system promptly back to the owner. There is no cost for this warranty service, provided the system is one year old or less and has not been misused, abused or damaged. Such damage includes, but is not limited to, dropping, exposure to excessive heat greater than 100°F and water/liquid damage.

Repair or replacement of the system as provided under this warranty is the sole and exclusive remedy of the purchaser. MedRx shall not be liable for any consequential or incidental damages, or for breach of any express or implied warranty. Except to the extent of applicable law, any implied warranty, merchantability or fitness of this product is limited to the duration of this warranty.

MedRx will, at its discretion, service and repair out of warranty components at the purchaser's request, charging for parts and labor as necessary.

The limited warranty is deemed void if software or hardware is installed on the AVANT POLAR HIT™ which is not pre-approved by MedRx, Inc. Approved software includes NOAH™ and HIMSA approved hearing aid manufacture programming modules for fitting hearing aids.

MedRx, Inc is not responsible for problems resulting from installation of unapproved software or hardware. In the event of unapproved software or hardware installed on the system causing a conflict with the AVANT POLAR HIT™ functions, MedRx will service the problem for a fee to be determined at the time of service.

Consult your MedRx Technical support member for other alternatives for back up.