

# INSTALLATION MANUAL

# AVANT POLAR HIT™



**MedRx®**



# Contents

Getting To Know Your AVANT™ POLAR HIT™ .....	4
Setting up the System .....	6
Software Installation .....	7
Driver Installation – Windows 7 .....	10
Driver Installation – Windows XP .....	13
Accessories .....	17
EMC Precautions .....	18
Safety .....	21
Limited Warranty .....	22



#0086



[www.medrx-usa.com](http://www.medrx-usa.com)



1200 Starkey Rd., #105, Largo FL 33771 U.S.A.

Toll Free: (888) 392-1234 • (727) 584-9600

Fax: (727) 584-9602 • Email: [medrx@medrx-usa.com](mailto:medrx@medrx-usa.com)



**MedRx's Authorized Representative in Europe**

(Regulatory affairs only)

Emergo Europe, Molenstraat 15

2513 BH The Hague, The Netherlands

Tel: (31) (0) 70 345-8570 • Fax: (31) (0) 70 346-7299

# Getting to Know Your AVANT Polar HIT

The AVANT Polar HIT represents a new era of precision Hearing Instrument Testing for your office. Compact yet rugged, this PC-Based system is USB powered and performs all required ANSI and IEC tests. A unique feature of the Polar HIT is a rotating test pad, which allows you to generate polar plots to verify the performance of directional microphones upon delivery and following repairs. The following section of this manual will familiarize you with the physical features and accessories of the Polar HIT system.

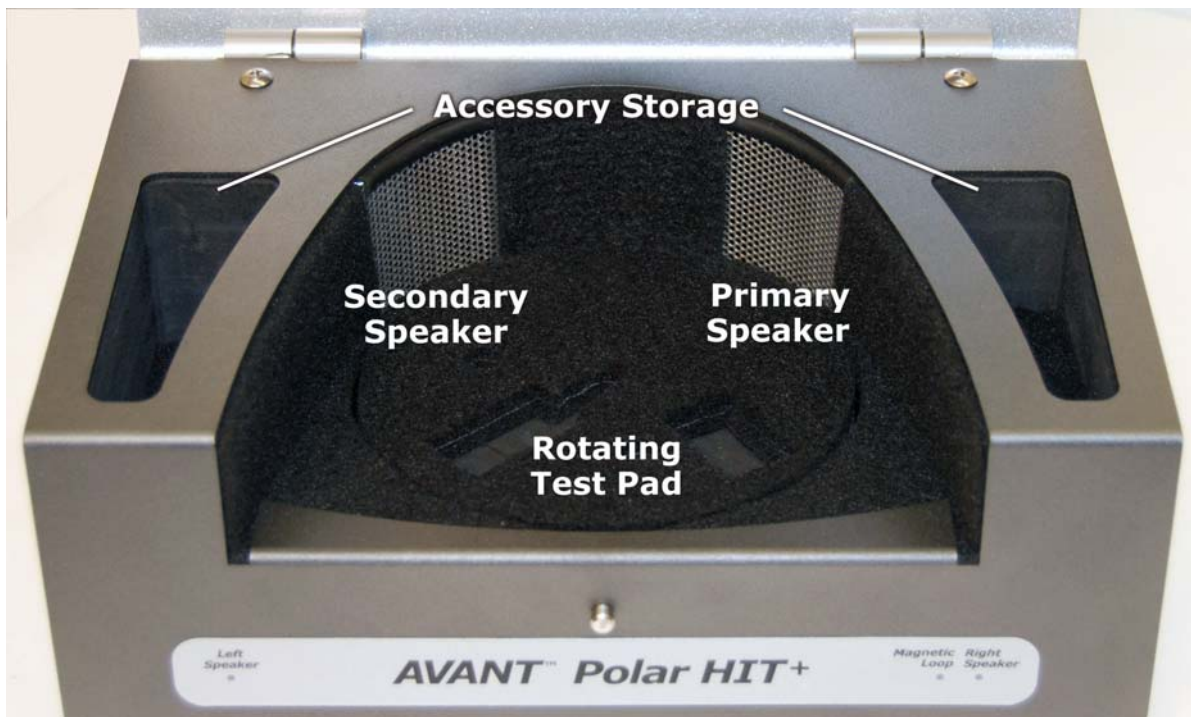


Front View

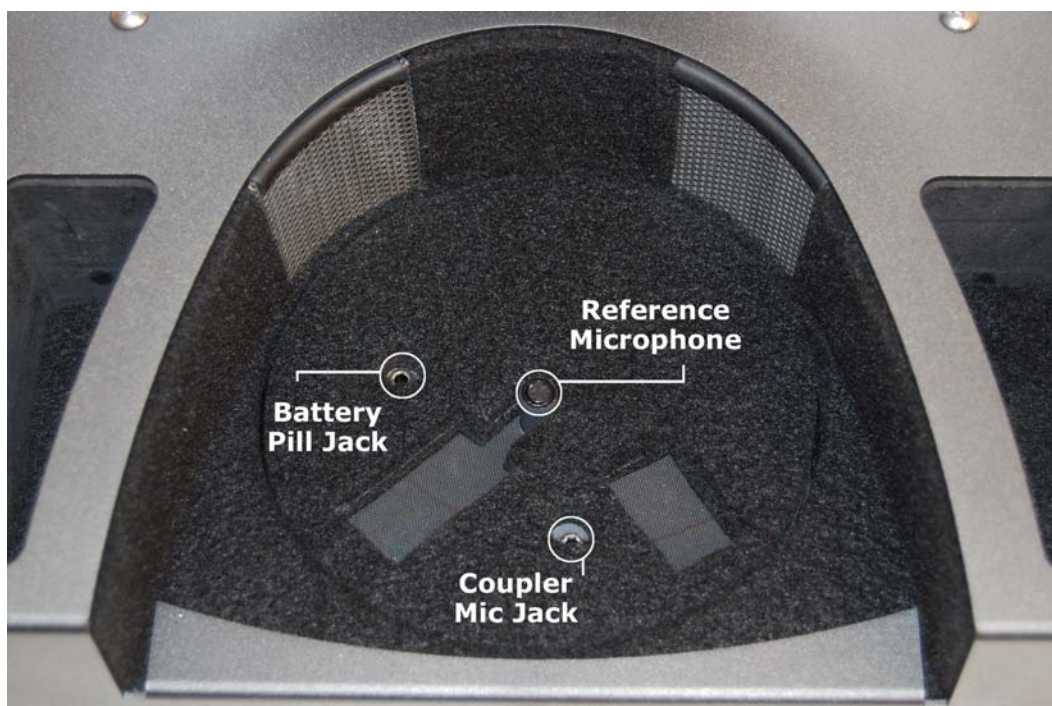


Rear View

Note the single high-speed USB 2.0 (backward compatible to USB 1.1) connector, which supplies the unit with power and transmits software control and data acquisition.



Inside the Test Chamber



Detail view of the Rotating Test Pad

# Setting up the System

## *Install the Coupler Microphone*

The Reference Microphone is pre-installed at the factory and should be flush or nearly flush with the floor of the rotating test pad.



Carefully install the coupler microphone as shown in the images below. Take care when handling these components, as they are delicate, precision calibrated instruments.

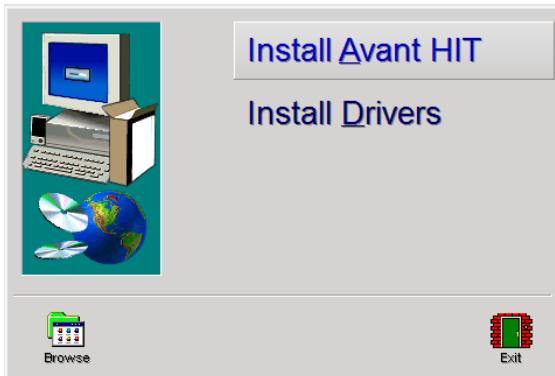


Install the Coupler Microphone as shown above.

Once the microphones are installed, you must install the Polar HIT Software and Drivers. This procedure is detailed in the next sections of this manual. If you have difficulty with these steps, contact MedRx Technical Support at (888) 392-1234 or 727-584-9600.

# Software Installation

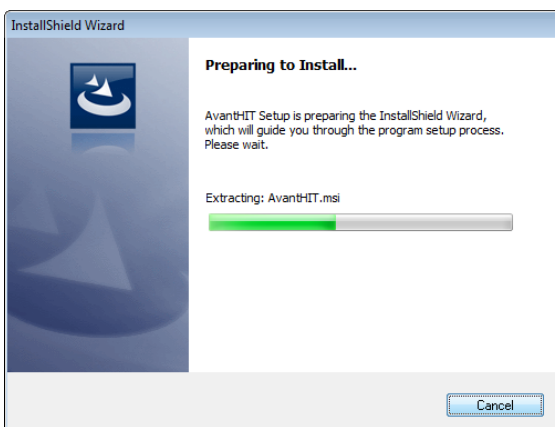
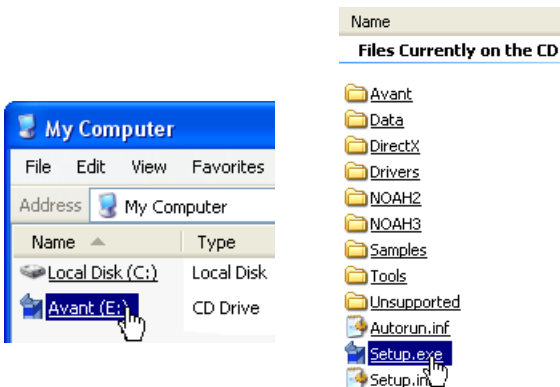
Do Not Plug in the AVANT POLAR HIT™ USB Cable yet



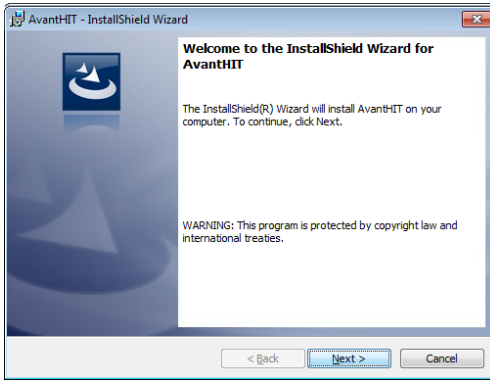
1. Insert the AVANT HIT™ CD-ROM into the CD drive. Wait until the **Setup program starts**.
2. On the Setup screen, choose **Install Avant HIT**.

If the Setup program does not start automatically:

- Open Computer explorer from Windows **Start** menu.
- Double Click on the **CD Drive** icon. This should open the AVANT™ Setup screen shown at the top left.
- If it does not, Windows will display a list of files on the CD ROM.
- Double Click **Setup.exe**

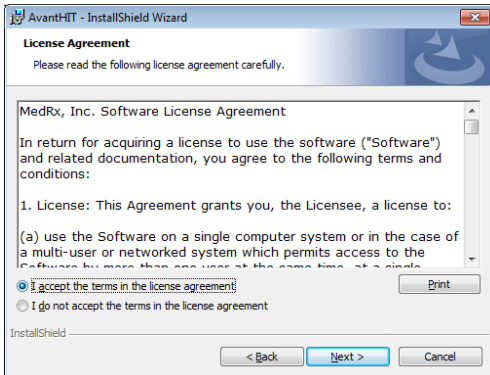


3. Wait for the program to setup the InstallShield Wizard.



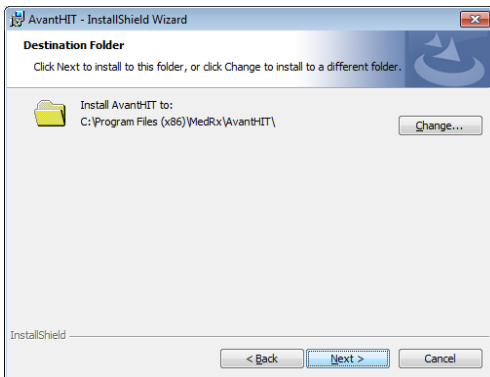
4. This is the Welcome screen

- Click **Next**.



5. Read the Software License Agreement. This important document defines the acceptable usage of the Polar HIT.

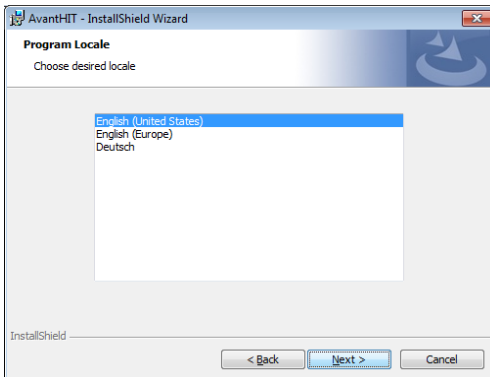
- After reading the Agreement, click **I accept...**
- Click **Next**.



6. This screen indicates the location of the program files.

- Click **Next**.

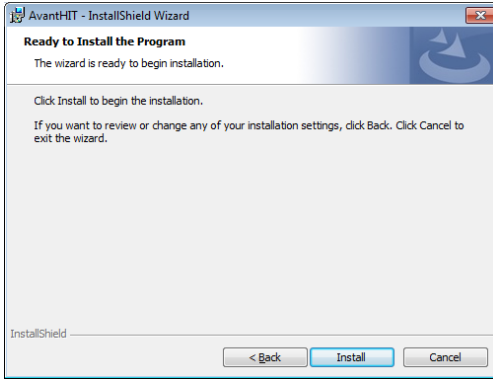
Note: You can install the Software to a different location, but it is not recommended.



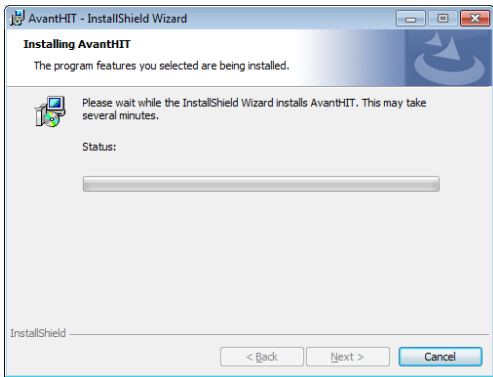
7. Choose desired Locale

- Click **Next**.

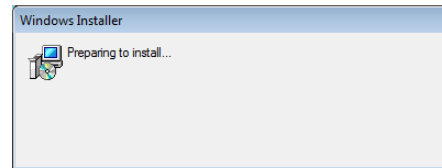




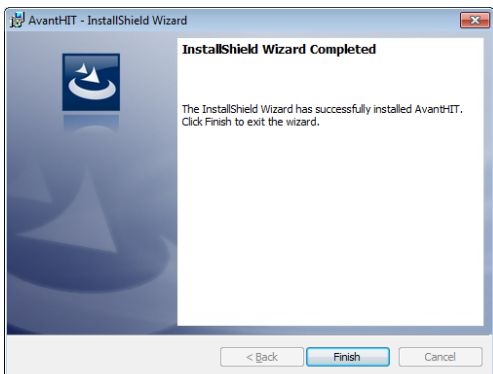
8. Ready to Install Program.
  - Click **Install**.



9. Wait while the InstallShield Wizard installs the AvantHIT program.
  - Click **Next**.



10. When the installation is complete, click **Finish**.



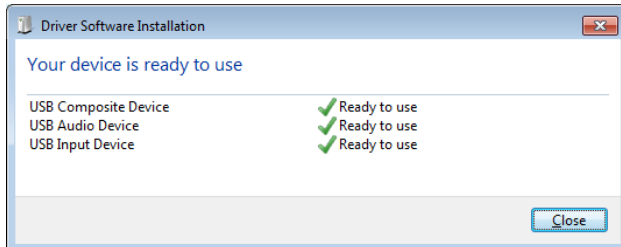
# Driver Installation on Windows 7

(see page 13 for Windows XP Driver Installation)

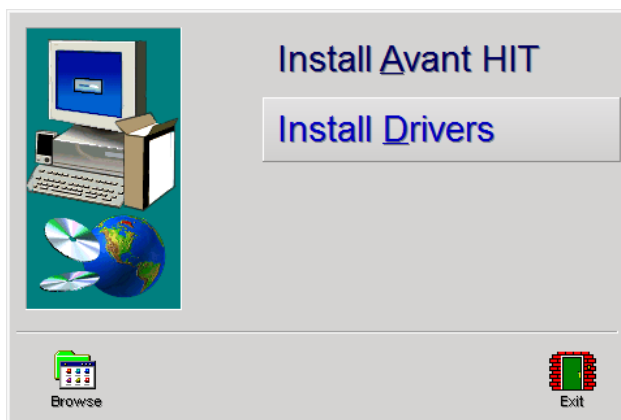
Because drivers are loaded to specific USB ports, it is essential that the Polar HIT cable be connected to the same USB port on your computer each time it is used. It is advisable to mark this port with a label to assist with identifying it should the cable need to be disconnected.



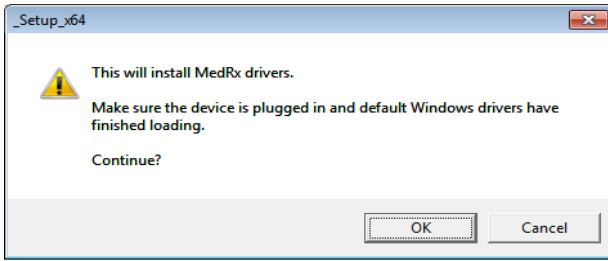
1. Connect the USB cable from the AVANT POLAR HIT™ to your computer as shown above.
2. Wait for the system to copy and install default drivers. During this process, you will see the following screen.



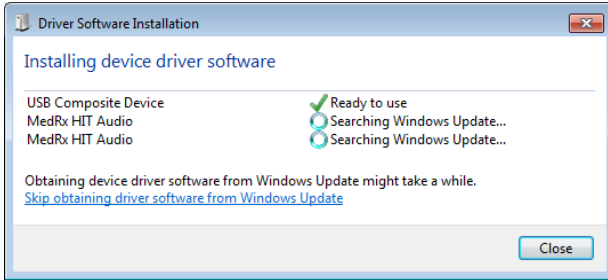
3. When this screen appears and all devices are "Ready to use", click **Close**.



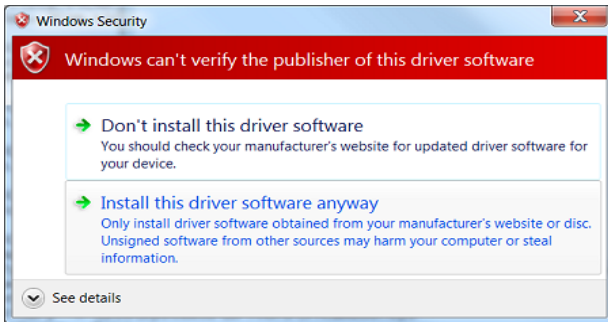
4. On the AvantHIT Setup screen, click **Install Drivers**.



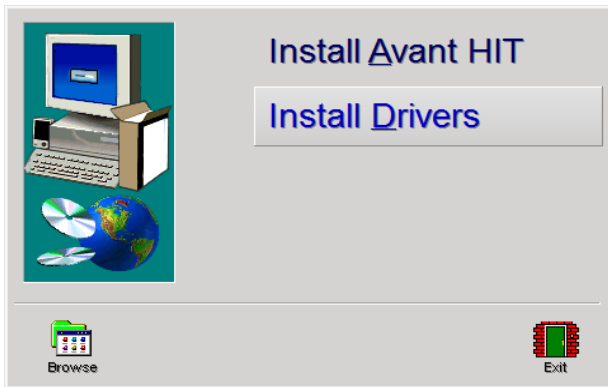
5. When this screen appears, click **Ok**.



6. When this window appears and all devices are "Ready to use", click **Close**.

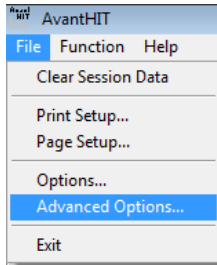


7. If this warning screen appears, click **Install this driver software anyway**.

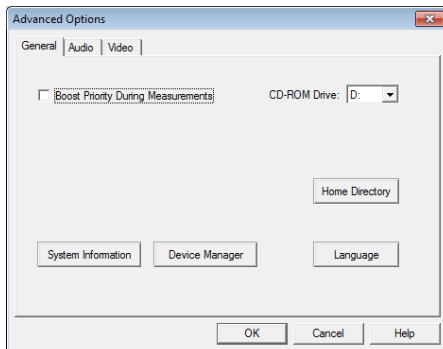


8. On Setup Window click **Exit**

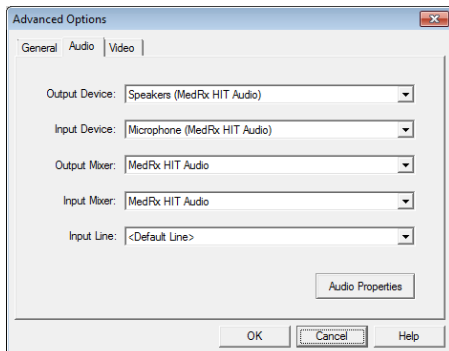
Next you need to set the Default Windows sound card settings. This will route all non-AVANT™ Windows sounds to the internal sound card of your computer. These sounds include event notifications such as new e-mail and error warnings as well as audio and video playback.



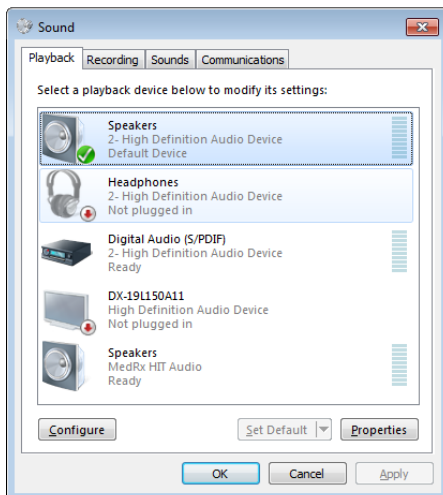
1. Launch the **AVANT HIT** software.
2. Open the **Advanced Options** from File menu as shown.



3. Open **Audio tab**.



4. When the audio properties are configured properly, during driver installation, the Audio Tab will appear like the image on the left. If not, use the pull-down lists to adjust the settings to match the image.
5. Click **Audio Properties**.



- In Windows Sound control panel, make sure the MedRx Audio Device is not set as default. If it is default, change this by clicking on your system (non-MedRx) audio device and then choose Set Default.

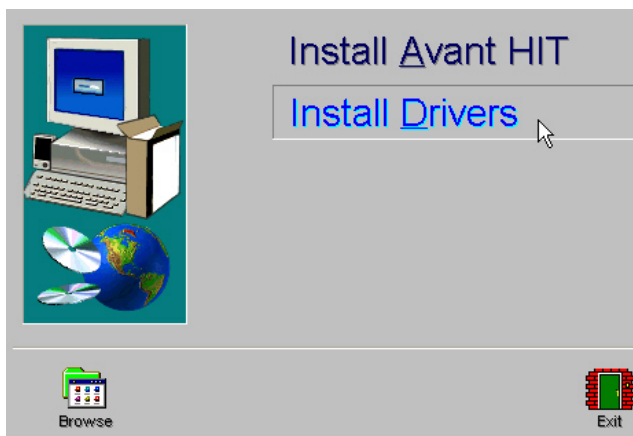
**NOTE:** The internal sound card on your computer will likely not have the same name as this screen shot. Consult your computer's documentation for the name of the internal sound card and set this control accordingly.

# Driver Installation on Windows XP

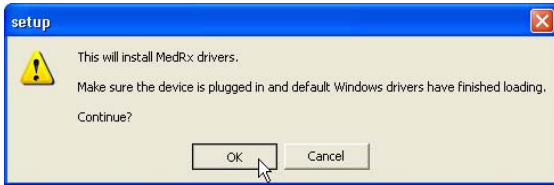
Because drivers are loaded to specific USB ports, it is essential that the Polar HIT cable be connected to the same USB port on your computer each time it is used. It is advisable to mark this port with a label to assist with identifying it should the cable need to be disconnected.



1. Connect the USB cable from the AVANT POLAR HIT™ to your computer as shown above.
2. Wait for the system to copy and install default drivers. During this process, you will see the following prompts in your system tray (lower right corner of the screen).



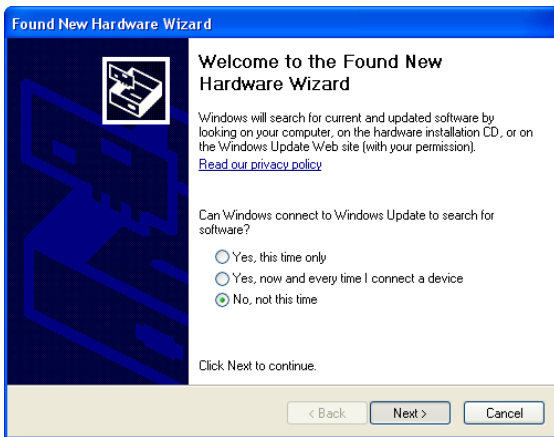
3. After the Windows drivers have been installed, insert the Avant HIT installation CD into the CD Drive.
4. When this screen appears, click **Install Drivers**.



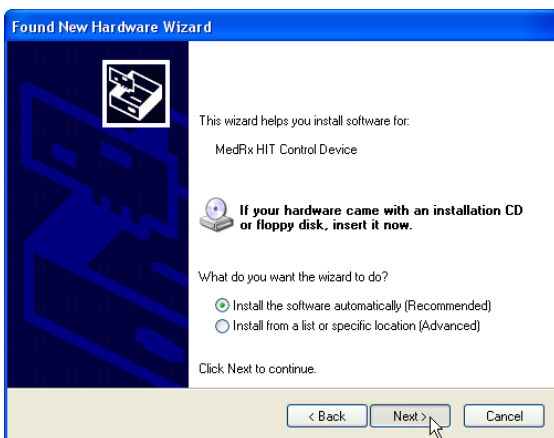
5. When this screen appears, click **OK**.



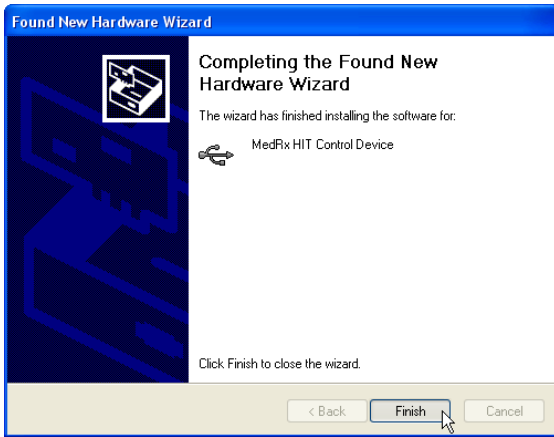
6. When the driver signature check screen appears, click **Continue Anyway**.



7. When this window appears,  
8. Select **No, not at this time**  
9. Click **Next**.



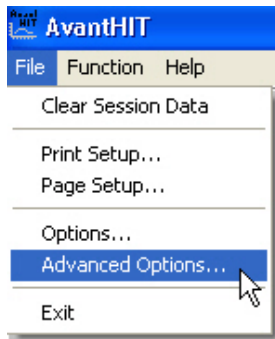
10. When this screen appears,  
11. **Select Install the software automatically (recommended).**  
12. Click **Next**.



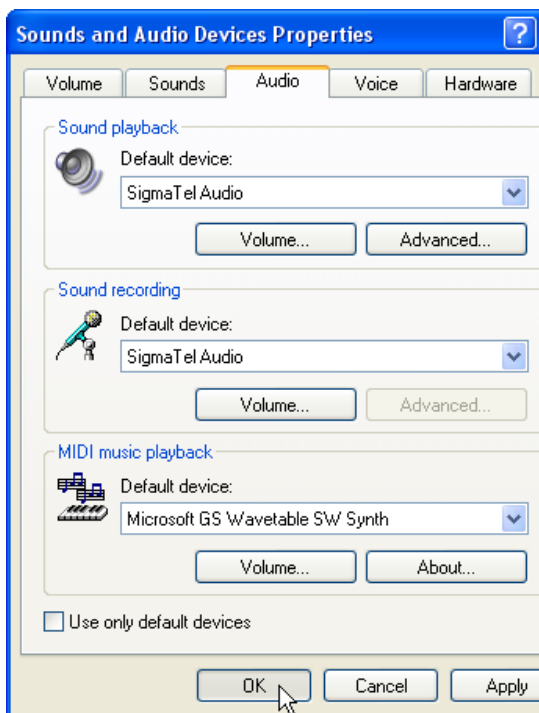
13. When this screen appears,
14. Click **Finish**.

**Exit the Setup screen** when the driver installation is finished.

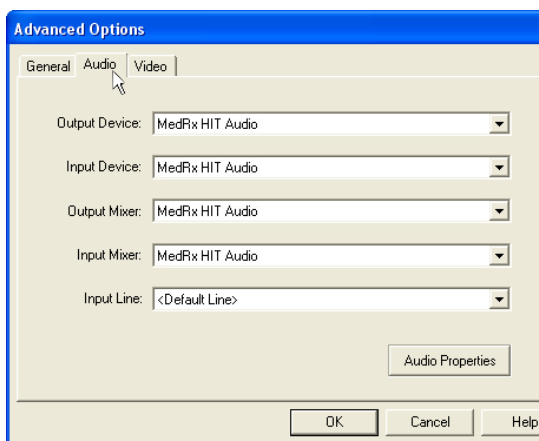
Next you need to set the Default Windows sound card settings. This will route all non-AVANT™ Windows sounds to the internal sound card of your computer. These sounds include event notifications such as new e-mail and error warnings as well as audio and video playback.



1. Launch the **AVANT HIT** software
2. Open the **Advanced Options** as shown
3. Click on the **Audio** Tab
4. Click the **Audio Properties** button



5. Using the pull downs, set the Sound Playback and Sound Recording Default devices to the internal sound card of your computer.
6. **NOTE:** The internal sound card on your computer will likely not have the same name as this screen shot (SigmaTelAudio). Consult your computer's documentation for the name of your internal sound card and set this control accordingly.



7. When the audio properties are configured properly, the Audio Tab will appear like the image on the left. If not, use the pull-down lists to adjust the settings to match the image.



# Accessories

## ***Couplers***

The system includes the couplers and adapters shown below. These will allow you to perform all ANSI and IEC Hearing Instrument Tests. Also included are two special accessories used only for Polar Plots.

**Note:** There is a flexible O-ring inside both the 2cc Coupler and the Button Receiver Adapter. These must remain in place for the couplers to function properly. Replacement O-rings are available from MedRx.



## ***Battery Pills***

Battery Pills, also known as Battery Simulators, provide power to the hearing instrument during testing. The system includes a complete set of Battery Pills as shown below.



## EMC Precautions

The Avant Polar Hearing Instrument Test (HIT) box needs special precautions regarding EMC and needs to be installed according to the following EMC information.

List of all cables and maximum lengths of cables, transducers and accessories:


Transducer / Accessories	Maximum Cable length
USB Cable	2.9 meters
Battery Simulators (All Versions)	0.3 meters
Microphones (All Versions)	0.3 meters

## Warnings!

- The use of accessories, transducers and cables other than those specified, with the exception of transducers and cables sold by the manufacturer of the Avant Polar Hearing Instrument Test box as replacement parts for internal components, may result in increased emissions or decreased immunity of the Avant Polar Hearing Instrument Test Box.
- The Avant Polar Hearing Instrument Test Box should not be used adjacent to or stacked with other equipment. If adjacent or stacked use is necessary, the Avant Polar Hearing Instrument Test box should be observed to verify normal operation in the configuration in which it will be used.
- The Avant Polar Hearing Instrument Test Box may be interfered with by other equipment, even if that other equipment complies with CISPR emission requirements.
- The Avant Polar Hearing Instrument Test Box does not have life supporting function
- Portable and mobile RF communications equipment can affect the Avant Polar Hearing Instrument Test Box.

Guidance and manufacturer's declaration – electromagnetic emissions		
The Avant Polar Hearing Instrument Test box is intended for use in electromagnetic environment specific below. The customer or the user of the Avant Polar Hearing Instrument Test box should assure that it is used in such an environment.		
Emission test	Compliance	Electromagnetic environment - guidance
RF emissions CISPR 11	Group 1	The Avant Polar Hearing Instrument Test box uses RF energy only for its internal function. Therefore, its RF emissions are very low and are not likely to cause any interference in nearby electronic equipment.
RF emissions CISPR 11	Class B	The Avant Polar Hearing Instrument Test box is suitable for use in all establishments, including domestic establishments and those directly connected to the public low - voltage power supply network that supplies buildings used for domestic purposes.
Harmonic emissions IEC 61000-3-2	Non applicable	
Voltage fluctuations / flicker emissions IEC 61000-3-3	Non applicable	

<b>Guidance and manufacturer's declaration – electromagnetic immunity</b>			
The Avant Polar Hearing Instrument Test box is intended for use in electromagnetic environment specific below. The customer or the user of the Avant Polar Hearing Instrument Test box should assure that it is used in such an environment.			
<b>Immunity test</b>	<b>IEC 60601 test level</b>	<b>Compliance level</b>	<b>Electromagnetic environment - guidance</b>
Electrostatic discharge (ESD)  IEC 61000-4-2	+/- 6 kV contact +/- 8 kV air	+/- 6 kV contact +/- 8 kV air	Floors should be wood, concrete or ceramic tile. If floors are covered with synthetic material, the relative humidity should be at least 30%.
Electrical fast transient / burst IEC 61000-4-4	+/- 2 kV for power supply lines +/- 1 kV for input / output lines	+/- 2 kV for power supply lines +/- 1 kV for input / output lines	Mains power quality should be that of a typical commercial or hospital environment.
Power frequency (50/60 Hz) Magnetic field  IEC 61000-4-8	3 A/m	3 A/m	Power frequency magnetic fields should be at levels characteristic of a typical location in a typical commercial or hospital environment.

<b>Guidance and manufacturer's declaration – electromagnetic immunity</b>			
The Avant Polar Hearing Instrument Test box is intended for use in electromagnetic environment specific below. The customer or the user of the Avant Polar Hearing Instrument Test box should assure that it is used in such an environment.			
<b>Immunity test</b>	<b>IEC 60601- test level</b>	<b>Compliance level</b>	<b>Electromagnetic environment - guidance</b>
			Portable and mobile RF communications equipment should be used no closer to any part of the Avant Polar Hearing Instrument Test box, including cables, than the recommended separation distance calculated from the equation applicable to the frequency of the transmitter. <b>Recommended separation distance:</b>
Conducted RF IEC 61000-4-6	3 V <sub>eff</sub>	3 V <sub>eff</sub>	$d = 1,17 \times \sqrt{P}$
Radiated RF IEC 61000-4-3	3 V/m 80 MHz to 2,5 GHz	3 V/m	$d = 1,17 \times \sqrt{P}$ 80 to 800 MHz  $d = 2,33 \times \sqrt{P}$ 800 MHz to 2,5 GHz
			Where P is the maximum output power rating of the transmitter in watts (W) according to the transmitter manufacturer and d is the recommended separation distance in meters (m). Field strengths from fixed RF transmitters, as determined by an electromagnetic site survey <sup>a</sup> , should be less than the compliance level in each frequency range <sup>b</sup> . Interference may occur in the vicinity of equipment marked with the following symbol: 

- NOTE 1 At 80 MHz and 800 MHz, the higher frequency ranges applies.  
 NOTE 2 These guidelines may not apply in all situations. Electromagnetic propagation is affected by absorption and reflection from structures, objects and people.
- a Field strengths from fixed transmitters, such as base stations for radio (cellular/cordless) telephones and land mobile radios, amateur radio, AM and FM radio broadcast and TV broadcast cannot be predicted theoretically with accuracy. To assess the electromagnetic environment due to fixed RF transmitters, an electromagnetic site survey should be considered. If the measured field strength in the location in which the Avant Polar Hearing Instrument Test box is used exceeds the applicable RF compliance level above, the Avant Polar Hearing Instrument Test box should be observed to verify normal operation. If abnormal performance is observed, additional measures may be necessary, such as reorienting or relocating the Avant Polar Hearing Instrument Test box.
- b Over the frequency range 150 kHz to 80 MHz, field strengths should be less than 3 V/m.

Recommended separation distances between Portable and mobile RF communications equipment and the Avant Polar Hearing Instrument Test box			
The Avant Polar Hearing Instrument Test box is intended to use in an electromagnetic environment in which radiated RF disturbances are controlled. The customer or the user of the Avant Polar Hearing Instrument Test box can help prevent electromagnetic interference by maintaining a minimum distance between portable and mobile RF communications equipment (transmitters) and the Avant Polar Hearing Instrument Test box as recommended below, according to the maximum output power of the communications equipment.			
Rated maximum output power of transmitter W	Separation distance according to frequency of transmitter meters		
	150 kHz to 80 MHz $d = 1,17 \times \sqrt{P}$	80 MHz to 800 MHz $d = 1,17 \times \sqrt{P}$	800 MHz to 2,5 GHz $d = 2,33 \times \sqrt{P}$
0,01	0,12	0,12	0,233
0,1	0,37	0,37	0,74
1	1,17	1,17	2,33
10	3,7	3,7	7,40
100	11,7	11,7	23,3
For transmitters rated at a maximum output power not listed above, the recommended separation distance d in meters (m) can be estimated using the equation applicable to the frequency of the transmitter, where P is the maximum output power rating of the transmitter in watts (W) according to the transmitter manufacturer.			
NOTE 1 At 80 MHz and 800 MHz the separation distance for the higher frequency range applies.			
NOTE 2 These guidelines may not apply in all situations. Electromagnetic propagation is affected by absorption and reflection from structures, objects and people.			

# Safety

Regarding electrical safety, this device is to be used only by professionals in the hearing healthcare industry.

It is Class II Medical Electrical (ME) equipment that is part of an ME system.

Power is supplied by the USB cable connected to a computer. An in-line optical isolator with medical power supply is recommended to achieve optimum safety. A medical grade computer is recommended and a medical grade isolation transformer will help minimize ground current. It is recommended that powered speakers are connected to an isolation transformer. The use environment should be between 10°C and 35°C, humidity within 30% to 90%. All components with operator contact are made of bio-compatible materials.

The colored lights on the device only indicate operating functions and have no other significance. The colors do not signify any dangerous or faulty condition. Mild soapy water is the preferred cleaning solution.

All repairs should be sent to Medrx for evaluation and / or repair.

Symbols that may be used:



Read the instruction manuals for safe usage of the device. (operating instructions)



or **SN** Indicates that the device serial number will follow.



Type B applied part.



Manufacturer (Medrx)



Authorized Representative in Europe

# Congratulations

Your MedRx system is now set up and ready for use. Please consult the Training Manual and the Interactive Help Files within the software for instructions and procedures. The Training Manual is available in PDF format on CD and at [www.medrx-usa.com](http://www.medrx-usa.com) in our Download Section.

## Limited Warranty

MedRx, Inc warrants this product to be free from defects in material and workmanship for one year from the time of purchase. If this system fails to perform as specified during this period, the purchaser is responsible for calling MedRx at (888) 392-1234 or (727) 584-9600. The company's representative will advise the owner to either return specific components or the entire system to:

**MedRx, Inc.  
1200 Starkey Road #105  
Largo, FL 33771 USA**

MedRx will repair or replace any defective devices, fully test the system and/or components and ship the system promptly back to the owner. There is no cost for the repair or return shipping, provided the system is one year old or less and has not been misused, abused or damaged. Such damage includes, but is not limited to, dropping, exposure to excessive heat greater than 100°F and water/liquid damage.

Repair or replacement of the system as provided under this warranty is the sole and exclusive remedy of the purchaser. MedRx shall not be liable for any consequential or incidental damages or for breach of any express or implied warranty. Except to the extent of applicable law, any implied warranty, merchantability or fitness of this product is limited to the duration of this warranty.

MedRx will, at its discretion, service and repair out of warranty products at the purchaser's request, charging for parts and labor as necessary.

The limited warranty is deemed void if software or hardware is installed on this product which is not pre-approved by MedRx, Inc. Approved software includes NOAH™ and HIMSA approved hearing aid manufacturer programming modules for fitting hearing aids.

MedRx, Inc is not responsible for problems resulting from installation of unapproved software or hardware. In the event of unapproved software or hardware installed on the system causing a conflict, MedRx will service the product for a fee to be determined at the time of service.

Any extension of this warranty past the initial one-year warranty is subject to the following (where applicable).

1. A \$300 deductible per repair.
2. Extended warranty does not include cables, connectors or peripherals.
3. Extended warranty of the Video Otoscope covers optics only.