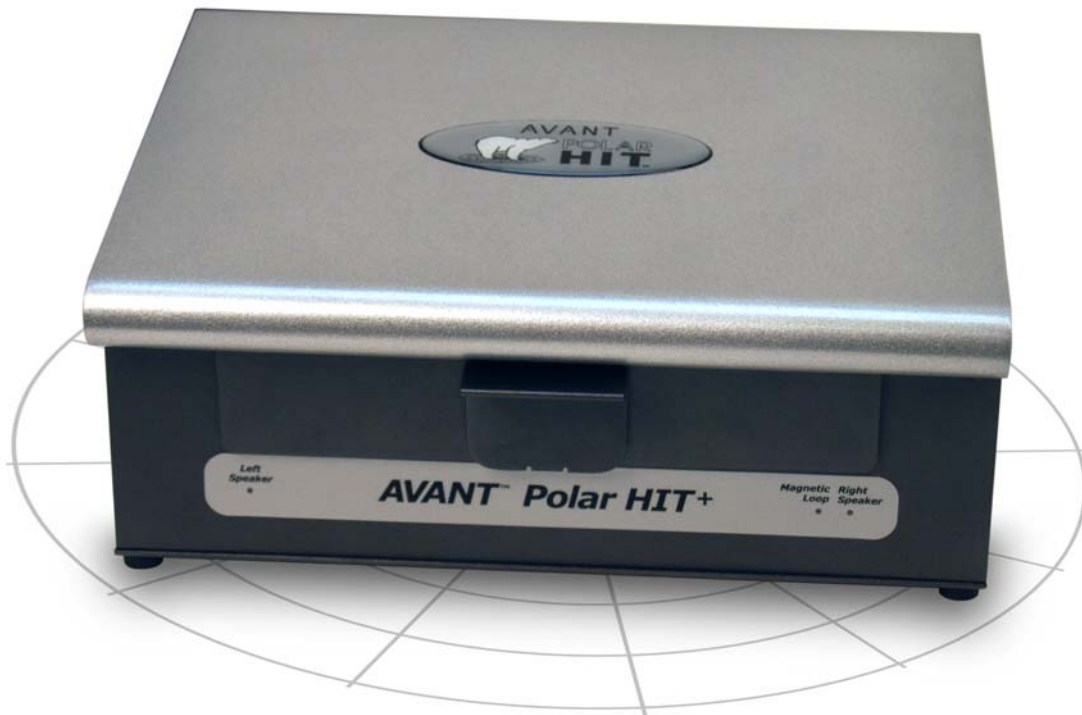


# USER MANUAL

# AVANT POLAR HIT™



**MedRx®**

# Contents

Introduction .....	3
AVANT™ POLAR HIT™ Software Overview .....	4
AVANT™ POLAR HIT™ Software Options .....	5
Preparing for Testing .....	7
Rotational Table Control.....	10
Making HIT Measurements .....	11
Sample HIT Measurements .....	13
Directional Testing (Polar HIT Hardware) .....	14
Clinical Use of Directional Testing.....	14
Testing Directional Hearing Instruments (Polar Plots) .....	16
Printing .....	20
Limited Warranty .....	21



#0086



[www.medrx-usa.com](http://www.medrx-usa.com)



1200 Starkey Rd., #105, Largo FL 33771

Toll Free: (888) 392-1234 • (727) 584-9600

Fax: (727) 584-9602 • Email: [medrx@medrx-usa.com](mailto:medrx@medrx-usa.com)



**MedRx's Authorized Representative in Europe**

(Regulatory affairs only)

Emergo Europe, Molenstraat 15

2513 BH The Hague, The Netherlands

Tel: (31) (0) 70 345-8570 • Fax: (31) (0) 70 346-7299

# Introduction

Hearing Instrument Testing (HIT) measures the hearing instrument response in a 2cc coupler in the test chamber. The coupler response is then compared to the manufacturer specification to ensure quality performance or to detect possible malfunctions of the hearing instrument.

This system follows the ANSI S3.22-2009 and IEC 60118-7 (2005-10) standards for hearing aid measurement methods.

**The Avant Polar HIT supports the following measurements:**

OSPL-90	Frequency Response	Input/Output (AGC)	Induction Coil
Full on Gain	Equivalent Input Noise	Battery Current	Directionality
Reference Test Gain	Harmonic Distortion	Attack/Release	

The AVANT Polar HIT represents a new era of precision Hearing Instrument Testing for your office. Compact yet rugged, this PC-Based system is USB powered and performs all required ANSI and IEC tests. A unique feature of the Polar HIT is a rotating test pad, which allows you to generate polar plots to verify the performance of directional microphones upon delivery and following repairs. This manual will explain the available tests and provide step-by-step instructions for all supported tests.

This manual assumes that the system hardware, software and drivers are installed and working properly. Please refer to the MedRx Avant Polar HIT Installation Manual for assistance.

The scope of this manual is to get you “up and running” with the AVANT Polar HIT System. Please consult the interactive Help System within the software for more detailed information of features and functionality. To access this tool, press the F1 key at any time or click the Help icon or text menu with your mouse.

This manual covers both the automated and the manual versions of the Avant Polar HIT.

# The AVANT HIT Software

## General Overview

The AVANT HIT software will either run as a part of the AVANT Software Suite (figure 1), or as a stand-alone module (figure 2). The AVANT Software Suite can run stand-alone or from within the NOAH™ System or the TIMS® NOAH™-Compatible Office System.



Figure 1 The AVANT Software Suite Main Screen.



Figure 2 The AVANT HIT Stand-Alone Main Screen.

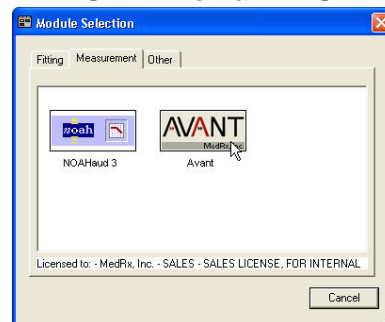
## Launching the HIT Software

### Stand Alone



1. Double click the **AVANT HIT** shortcut on your Windows Desktop.

### NOAH™ and TIMS®



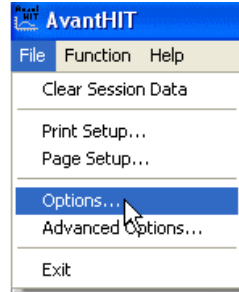
1. Launch **NOAH**.
2. Click the **Module Selection** icon.
3. Click the **Measurement** Tab.
4. Double click the **AVANT** icon.

## Software Options

### Basic Options

The software allows you to set several default options as described below. To access the Options screen, click **File**, then Options from the Avant HIT main window.

Options may also be accessed using the **Options** menu once inside the HIT software.



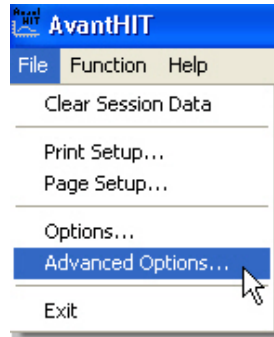
The **View tab** allows you to set the default appearance of the HIT test environment. Values can be changed by using the check boxes and pull-down menus shown above. Consult the interactive help system in the product you are using for explanations of parameters.

The **HIT Tab** allows you to select the relevant Standard for your measurements (ANSI S3.22-2009 or IEC 60118-7 2005-10) as well as the general parameters for your HIT measurements. Consult the interactive help system in the product you are using for explanations of parameters.

Note: HIT functionality is available in several MedRx products. These screens may vary slightly depending on the product. Consult the interactive help system in the product you are using.

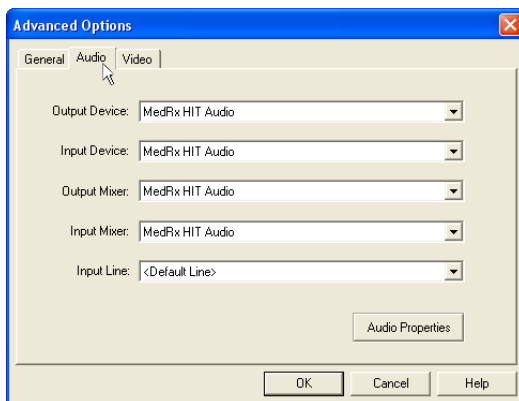
## Advanced Options

The Advanced Options screen allows you to configure your system to meet your individual clinical needs. It also provides MedRx Technical Support with tools for helping you with technical issues. Access this screen from the File Menu on the Avant Main Screen as shown to the right.

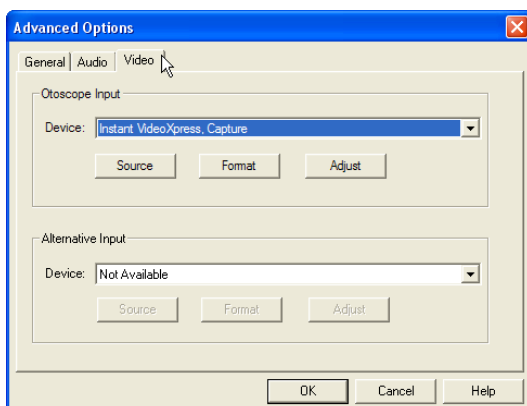


The key features of each tab are described below. For more in-depth information, consult the interactive **Help** system (F1) within the software.

The **General Tab** configures the overall Avant HIT environment and behavior with respect to other Windows programs, specifically NOAH



Use the **Audio Tab** to select the proper audio device for your Avant HIT. If necessary, this tab also provides access to the Windows Audio controls.



If your system has a Video Otoscope, the **Video Tab** allows you to select the appropriate device driver.

# Preparing for ANSI/IEC Hearing Instrument Testing

## *Attaching Hearing Instruments to the Coupler*

### **For ITE (In The Ear), ITC (In The Canal) and MIC (Mini Canal) Hearing Instruments**

1. Seal acoustic vents.
2. Wrap the canal portion of the instrument with a hermetic sealing material such as Bostik Blu-Tack (see Figure 1).
3. Align the sound bore with the opening of the ITE coupler adapter. Press the sealing material firmly into the ITE adapter (see figure 2).
4. Ensure that the black O-ring is installed in the 2cc coupler and snap the ITE adapter in place (see Figure 3).



Figure 1

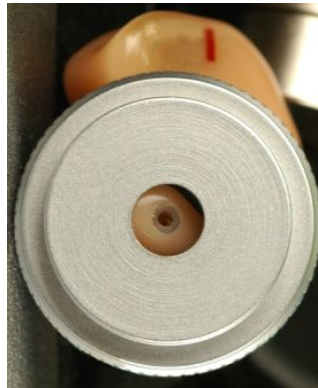


Figure 2



Figure 3

## ***Attaching Hearing Instruments to the Coupler (cont.)***

### **BTE (Behind The Ear) Hearing Instruments**

1. Remove earmold from hearing instrument.
2. Attach ear hook to 20mm long Tygon tube on BTE Coupler Adapter (see Figure 4).
3. Snap the BTE Coupler Adapter onto the 2cc Coupler (see Figure 5).



Figure 4



Figure 5

### **Hearing Instruments with Button Receivers**

1. Remove earmold from hearing instrument.
2. Attach the button receiver to the Coupler Adapter and seal with putty (see Figure 6).
3. Snap the Button Receiver Coupler Adapter onto the 2cc Coupler (see Figure 7).



Figure 6



Figure 7



## **Positioning Hearing Instruments to the Test Chamber**

The AVANT Polar HIT chamber utilizes two speakers positioned 90° apart. When placing hearing instruments in the chamber, it is critical to place the hearing instrument microphone adjacent to the reference microphone. The center of the sound inlet of the hearing instrument microphone should be between 2mm and 8mm from the center of the reference microphone. Proper positioning for ITE, BTE and Body Worn hearing instruments are shown below.



ITE Hearing Instrument



BTE Hearing Instrument



Body Worn Hearing Instrument

Once the instrument is properly placed in the test chamber, turn the instrument on and close the lid of the chamber. The latch will engage with an audible “click” when the lid is closed properly.

### Notes:

1. ITE instruments are aligned as if they are being worn and the patient's nose is facing the **Secondary Speaker**.
2. BTE instruments are aligned as if they are being worn and the patient's nose is facing the **Primary Speaker**.
3. Battery pills are used for ITE and BTE Instruments, but not for Body Worn Instruments.

## ***Rotational Table Control***

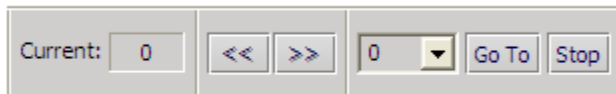
**This topic is applicable only for boxes that have automated rotational table.**

The operator may set automated rotational table to any desired angle using the controls located at the top of the screen.

The Rotational Table is organized so that angles from **0** to **180** degrees cover one side of the hearing aid, and **0** to **-180** degrees cover the opposite side of the hearing aid.

The **0 (Zero)** angle is assumed when the hearing aid microphone is facing the main (right) speaker.

The **Current** box indicates the current angle.



The table can be rotated either by using the **Left** and **Right** arrows or by selecting desired angle in the dropdown box and clicking **Go To** button.

Note: The desired angle can also be typed directly in the dropdown box.

Note: While in Go To motion, the table can be stopped by clicking **Stop** button.

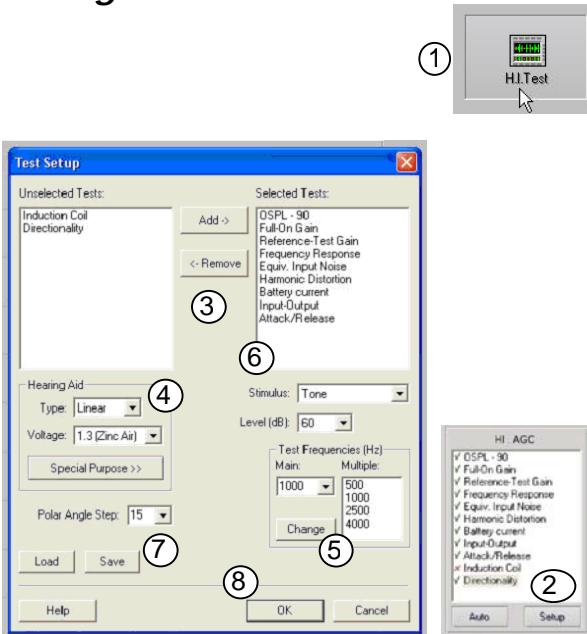
The control is available for any test, except the Directionality Test. The Directionality Test controls the table rotation automatically.

# Making HIT Measurements

## General overview

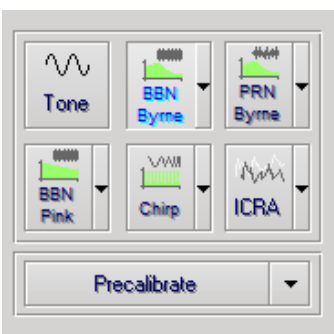
The AVANT HIT software is designed to make the process of making HIT measurements simple. The easiest way to complete them is to use the Auto Test feature.

## Setting Auto Test Preferences



1. From the AVANT HIT Main screen, click **HI Test**.
2. Click the **Setup button** below the list of tests.
3. In the Test Setup Window, add or remove the tests you want to include in your Auto Test battery.
4. Select the appropriate amplifier and battery type.
5. Select the test frequencies you wish to use.
6. Select your default stimulus.
  - For ANSI and IEC tests, select Tone.
  - To evaluate the performance of noise reduction circuits, select Speech Noise.
  - Select other stimuli as dictated by your clinic policies or jurisdiction's regulations.
7. Click **Save** to store your preferred settings
8. Click **OK** to close this window.

## Signal Type Toolbar



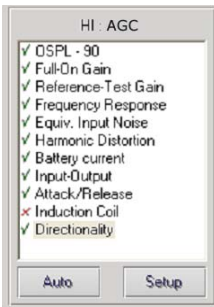
The signal type can be selected from this toolbar. The noise signal buttons can be re-assigned with desired noise types and weights from drop down lists. These assignments will be stored for quick signal selection.

For detailed description of signal types and weightings, consult the interactive **Help** system within the software.

**Precalibrate** function allows you to calibrate the reference level without the hearing aid turned on and then run tests without referencing. This function can be used if it is suspected that a high gain hearing aid is leaking sound thus affecting the reference microphone.

## Starting Test

After setting your default preferences, simply place the hearing instrument into the test chamber as described in the Avant Polar HIT Installation Manual



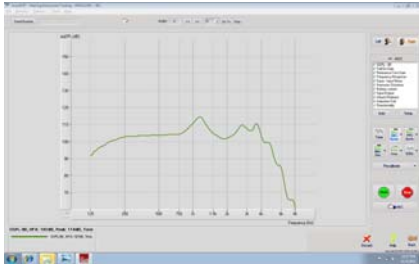
Click **Start** to start a single test in automatic mode. The test will finish after the measurement is complete.

Click **MSC** (Manual Signal Control) to start a single test in continuous mode. The test will not finish by itself and will have to be stopped by clicking **Stop** icon.

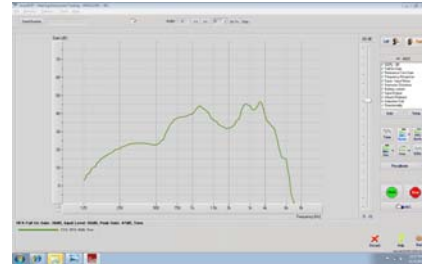
Click **Auto** run the selected tests in sequence.

# Sample HIT Measurements

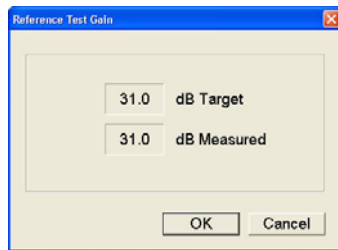
The screenshots below illustrate the Avant Polar HIT representations of the ANSI S3.22-2009 Hearing Instrument Test Battery. The system also supports the IEC 60118-7 2005-10.



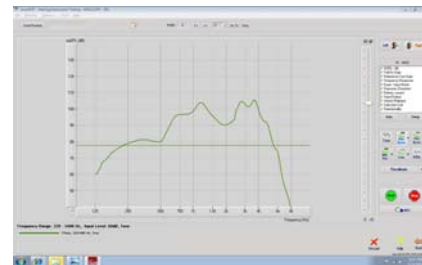
OSPL90



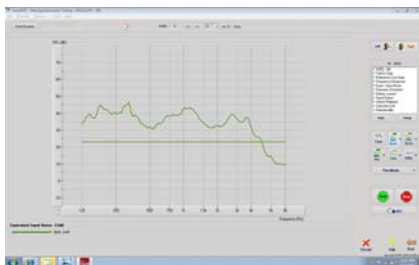
Full-On Gain



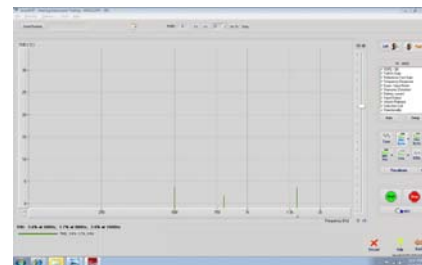
Reference Test Gain



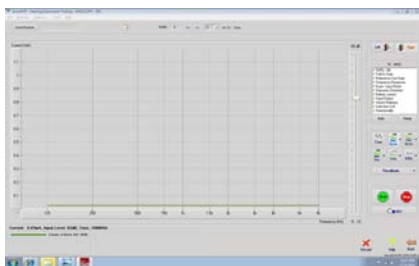
Frequency Response



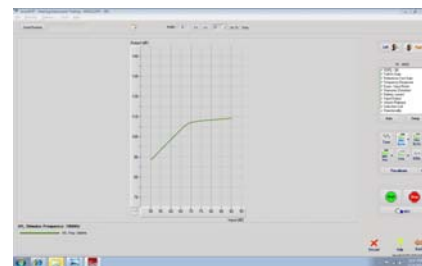
Equivalent Input Noise



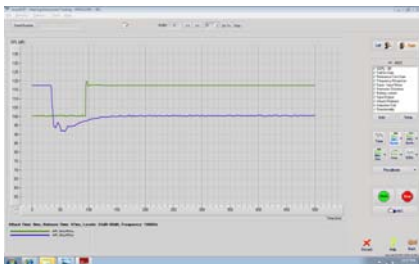
Total Harmonic Distortion



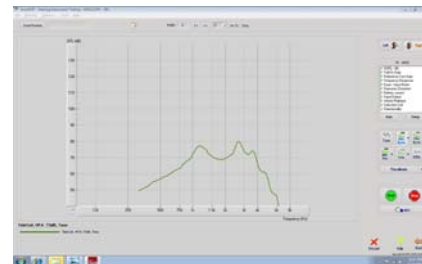
Battery Current



Input/Output



Attack/Release



Induction Coil

# Directional Testing - Polar HIT Hardware

The Directionality Test helps to verify directional characteristics of hearing aids.

The procedure of the test depends of the type of the HIT box:

- For HIT boxes with automated rotational table, follow the Automated Directionality Test see page 18.
- For HIT boxes with manual rotational table, follow the Manual Directionality Test see page 19.

1. Select the **Directionality Test** from the list on the right of the screen.
- **NOTE: Be sure to set the hearing instrument to Directional Mode**



2. Click



3. Click



## Clinical Use of Directional Testing

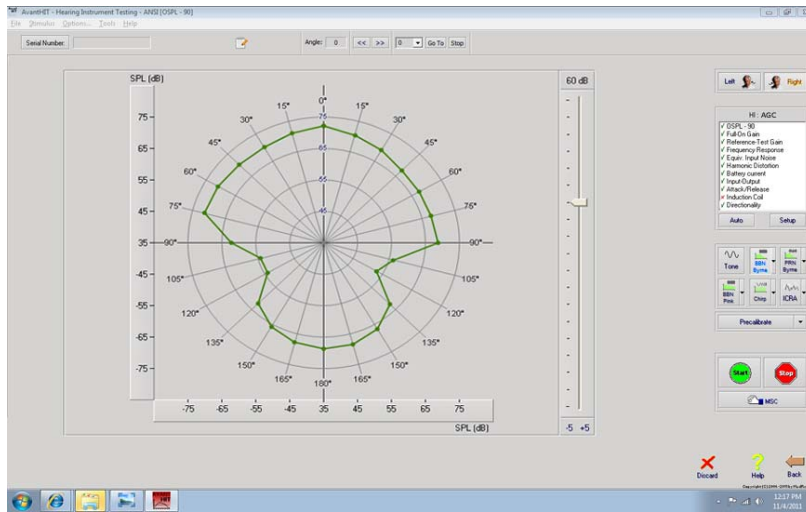
Integrating new technology into your daily routine takes a bit of time and effort, but being certain that your premium product line is in peak condition for every patient is well worth it. Testing each hearing instrument upon receipt from the manufacturer in the Avant Polar HIT chamber provides you with the confidence to know that one of the key features in each patient's hearing instrument fitting is functioning according to specification **before the appointment is made**. Identifying these problems and rescheduling is far better than sending a patient into the world with expectations that cannot be met.

As of 2007, there have been many peer-reviewed scientific papers demonstrating the benefits of directional microphones for people with sensorineural hearing loss. Further, the MarkeTrak surveys continue to show that discriminating speech in noise is one of the greatest challenges and most desired outcomes for people purchasing hearing instruments.

The majority of hearing instrument manufacturers offer sophisticated directional microphone systems, however, data reveals that manufacturing and shipping mishaps result in a large percentage of instruments arriving at your office with malfunctioning directional microphones.

Additionally, the Avant Polar HIT allows you to quickly and precisely diagnose when directional microphones fail or become misaligned after the fitting. This expedites the repair process and ensures your practice maintains the highest level of patient satisfaction and repeat business. Finally, the Avant Polar HIT is also a comprehensive ANSI and IEC test chamber which allows you to also diagnose distortion, weak amplifiers and malfunctioning telecoils.

A completed Polar Plot is shown below.



Interpretation:

The polar plot shows the measured sensitivity of the microphone for input signal at different angles. Here we see that the microphones of this hearing instrument have maximum sensitivity when the test signal (1000 Hz pure tone) is in front of the hearing instrument (+/- 75°).

The minimum sensitivity, or null of the system occurs between 105° and 120° to either side of the center of the hearing instrument.

While there is still measurable sensitivity directly behind the hearing aid (180°), the system is significantly less sensitive to sounds in this position.

This type of microphone configuration will provide a patient with noticeable improvement in speech discrimination in noise.

# Testing Directional Hearing Instruments (Polar Plots)

The Avant Polar HIT is unique in its ability to produce manufacturer-quality Polar Plots in your office. This is accomplished using the Avant Polar HIT software and the unique Rotating Test Pad.

## ***Attaching Hearing Instruments to the Coupler***

### **For ITE (In The Ear), ITC (In The Canal) and MIC (Mini Canal) Hearing Instruments**

1. Seal acoustic vents.
2. Wrap the canal portion of the instrument with a hermetic sealing material such as Bostik Blu-Tack (see Figure 1).
3. Align the sound bore with the opening of the ITE coupler adapter. Press the sealing material firmly into the ITE adapter (see figure 2).
4. Ensure that the black O-ring is installed in the 2cc coupler and snap the ITE adapter in place (see Figure 3).



Figure 1

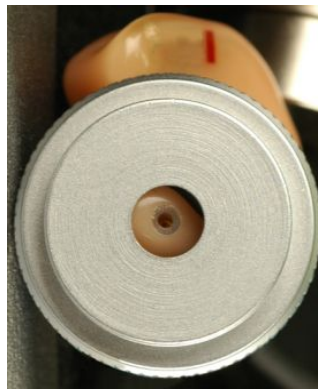


Figure 2



Figure 3

### **BTE (Behind The Ear) Hearing Instruments**

1. Remove earmold from hearing instrument.
2. Attach ear hook to the right angle tube on BTE Coupler Adapter (see Figure 4).
3. Snap the BTE Coupler Adapter onto the 2cc Coupler (see Figure 5).



Figure 4



Figure 5



## ***Positioning Hearing Instruments to the Test Chamber***

The AVANT Polar HIT chamber utilizes two speakers positioned 90° apart. When placing hearing instruments in the chamber, it is critical to align them so the primary hearing instrument microphone is perpendicular to the grill of the primary speaker. The Primary Speaker is on your right. Proper positioning for ITE, and BTE hearing instruments are shown below.



ITE Hearing Instrument



BTE Hearing Instrument

Once the instrument is properly placed in the test chamber, turn the instrument on and close the lid of the chamber. The latch will engage with an audible “click” when the lid is closed properly.

### Notes:

4. ITE instruments are aligned as if they are being worn and the patient's nose is facing the ***Secondary Speaker (Left)***.
5. BTE instruments are aligned as if they are being worn and the patient's nose is facing the ***Primary Speaker (Right)***.
6. Battery pills are used for ITE and BTE Instruments, but fresh Zinc Air batteries may also be used.

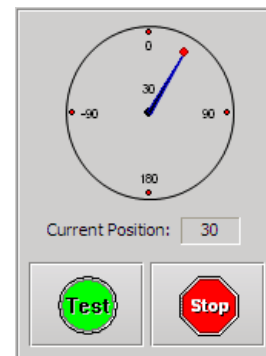
## Performing Polar Plot Testing (*Automated Directionality Test*)

The MedRx Polar HIT system uses a unique rotating base to allow the creation of Polar Plots of directional hearing instrument sensitivity. Prior to beginning a Directionality test, place the hearing instrument in the Test Chamber as described in the Preparing for Testing section of this guide, page 7.

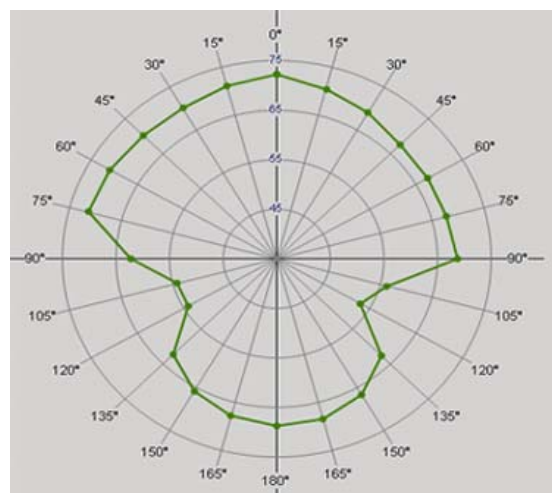
1. Select **Directionality** from the list (1) and press **Start** (2), Directionality test gauge is shows current position inside the box.



2. Press **Test** and wait for the test to finish. The test is performed automatically. Target and current positions are shown in real time during the test execution.



Typical Polar Plot

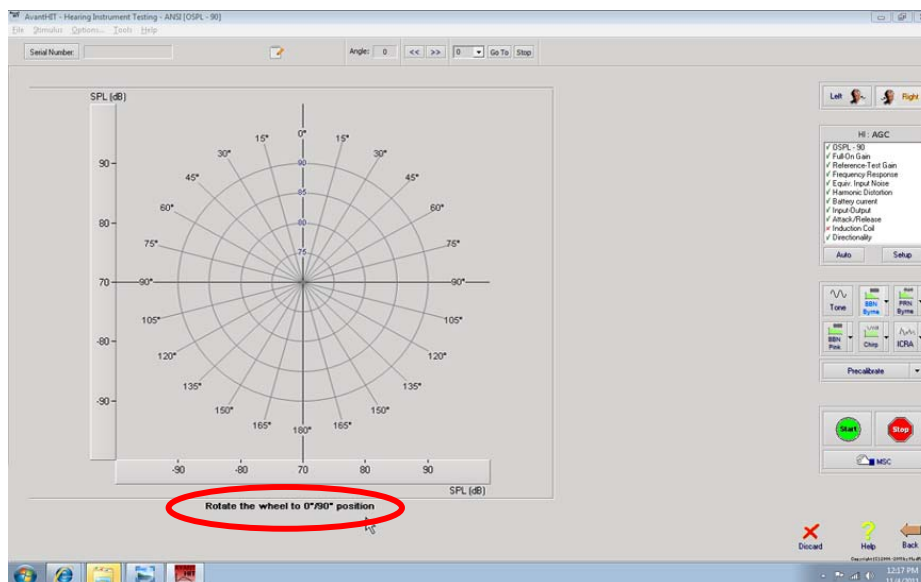


## Performing Polar Plot Testing (*Manual Directionality Test Version*)

**NOTE:** During testing, the software will prompt you to manually rotate the test pad either clockwise or counter-clockwise. Please refer to the figure below for reference.



- Follow the screen prompts (circled in red below) to complete the test.



**NOTE:** When the rotational cycle is complete, the “start” button replaces the “test” button.

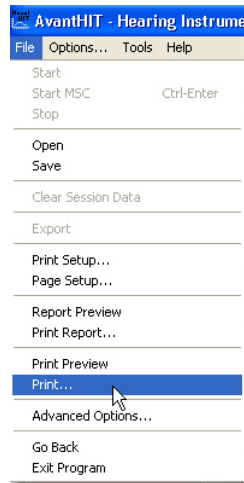


# Printing

The AVANT POLAR HIT software allows you to print tests individually or as a complete multi-test report.

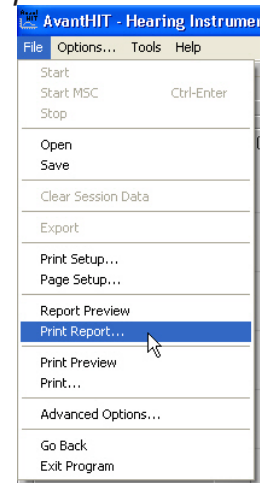
## Printing Individual Tests

1. Click **File**
2. Click **Print**



## Printing Multi-Test Reports

1. Click **File**
2. Click **Print Report**



# Limited Warranty

MedRx, Inc warrants this product to be free from defects in material and workmanship for one year from the time of purchase. If this system fails to perform as specified during this period, the purchaser is responsible for calling MedRx at (888) 392-1234 or (727) 584-9600. The company's representative will advise the owner to either return specific components or the entire system to:

**MedRx, Inc.  
1200 Starkey Road #105  
Largo, FL 33771 USA**

MedRx will repair or replace any defective devices, fully test the system and/or components and ship the system promptly back to the owner. There is no cost for the repair or return shipping, provided the system is one year old or less and has not been misused, abused or damaged. Such damage includes, but is not limited to, dropping, exposure to excessive heat greater than 100°F and water/liquid damage.

Repair or replacement of the system as provided under this warranty is the sole and exclusive remedy of the purchaser. MedRx shall not be liable for any consequential or incidental damages or for breach of any express or implied warranty. Except to the extent of applicable law, any implied warranty, merchantability or fitness of this product is limited to the duration of this warranty.

MedRx will, at its discretion, service and repair out of warranty products at the purchaser's request, charging for parts and labor as necessary.

The limited warranty is deemed void if software or hardware is installed on this product which is not pre-approved by MedRx, Inc. Approved software includes NOAH™ and HIMSA approved hearing aid manufacturer programming modules for fitting hearing aids.

MedRx, Inc is not responsible for problems resulting from installation of unapproved software or hardware. In the event of unapproved software or hardware installed on the system causing a conflict, MedRx will service the product for a fee to be determined at the time of service.

Any extension of this warranty past the initial one-year warranty is subject to the following (where applicable).

1. A \$300 deductible per repair.
2. Extended warranty does not include cables, connectors or peripherals.
3. Extended warranty of the Video Otoscope covers optics only.