

INSTALLATION MANUAL

A V A N T

REM*sp*[™]



MedRx[®]

Contents

| | |
|---|----|
| Getting to Know Your AVANT™ REMsp | 4 |
| Software Installation | 4 |
| Driver Installation | 6 |
| EMC Precautions | 8 |
| Safety | 11 |
| Limited Warranty | 12 |



#0086



www.medrx-usa.com



1200 Starkey Rd., #105, Largo FL 33771 U.S.A.

Toll Free: (888) 392-1234 • (727) 584-9600

Fax: (727) 584-9602 • Email: medrx@medrx-usa.com



MedRx's Authorized Representative in Europe

(Regulatory affairs only)

Emergo Europe, Molenstraat 15

2513 BH The Hague, The Netherlands

Tel: (31) (0) 70 345-8570 • Fax: (31) (0) 70 346-7299

Getting to Know Your AVANT REMsp

The AVANT REMsp represents a new era of precision in-situ verification for your office. Compact yet rugged, this PC-Based system is USB powered and supports ANSI and IEC Real Ear tests. The software includes targets for **DSL i/o 5.0** and **NAL-NL2**. The REMsp is an affordable, single probe device which utilizes MedRx's in-situ method for getting the fitting right the *first time, every time*. The following section of this manual will familiarize you with the physical features and accessories of the REMsp system.



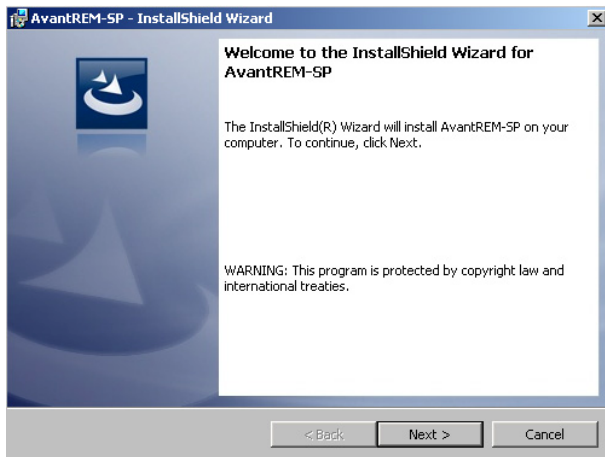
Front View



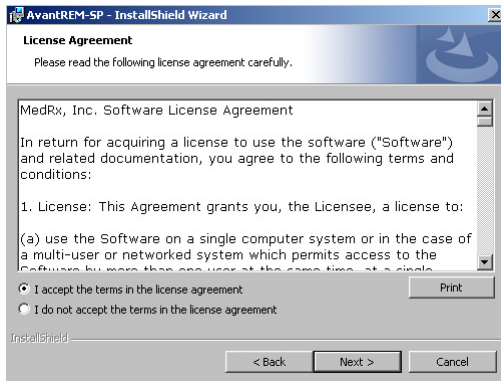
Rear View

Software Installation

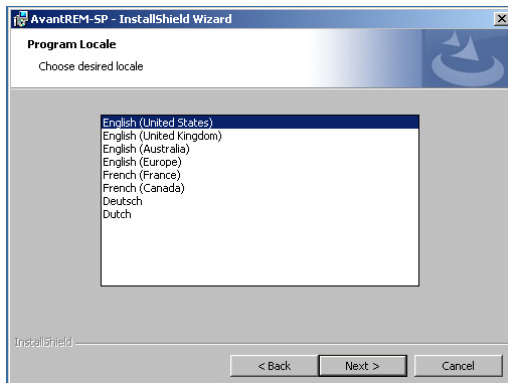
Do Not Plug in the AVANT REMsp yet!



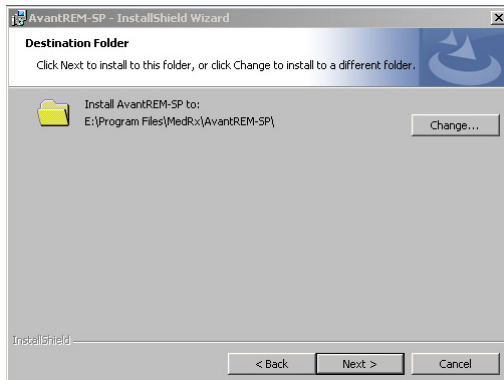
- Insert the AVANT REMsp CD-ROM into the CD drive. Wait until the **Setup program starts**.
- If the Setup program does not automatically start, click:
 - **Start.**
 - **Run.**
 - Type **D:\Setup.exe** in the window where 'D' is the drive letter assigned to the CD ROM drive on your computer.
- This is the Welcome screen.
- To continue, Click **Next**.



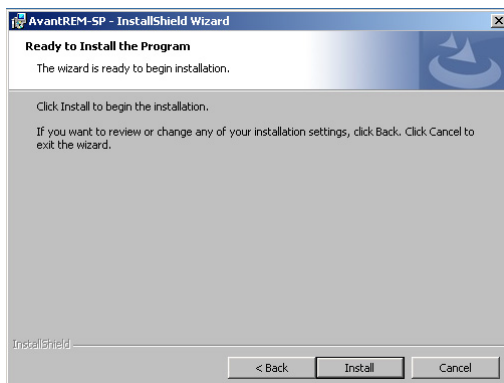
- Read the Software License Agreement. This important document defines the acceptable usage of the REMsp software.
- After reading the Agreement, click **Accept**.
- Click **Next**.



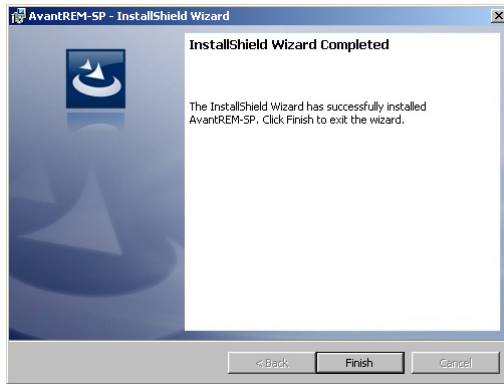
- Select the language you want to use on this screen using the radio buttons.
- Click **Next**.



- This screen indicates the location of the program files. The default location is recommended for most users; however, this location can be changed if necessary.
 - To continue with the default settings, click **Next**.
 - To change the location of the files (advanced users or system administrators only) click **Change**.
 - Browse to desired folder – click **Ok**.
 - Click **Next**.



- On the Setup screen, choose **Install**.



- When the installation is complete,
- Click **Finish**.

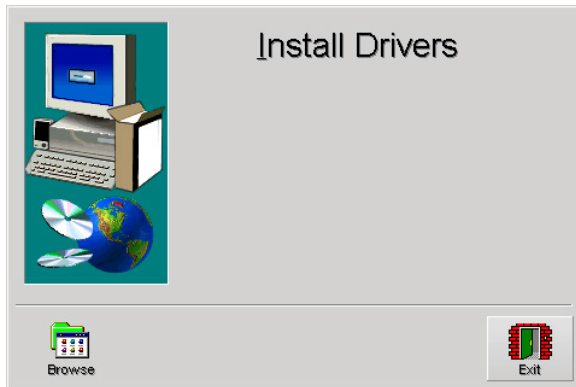
Driver Installation

Connect the AVANT REMsp to your computer as shown below, or use the included USB extension cable between the REMsp and the computer.



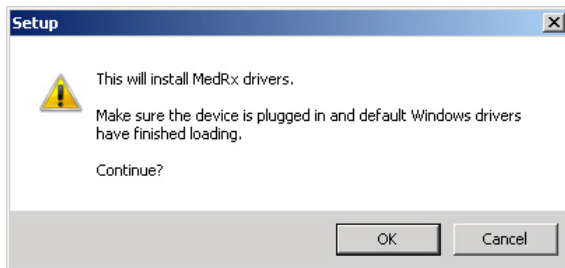
Your AVANT REMsp is USB powered.

Wait until Windows® installs default drivers. This takes approximately one minute.



1. After the software has been installed.

- Click **Install Drivers**.



2. When this screen appears,

- Click **OK**



3. When this screen appears,

- Click **Install**.



4. When the driver signature check screen appears,

- Click '**Continue Anyway**'.

5. Continue the installation by following the default options when prompted.

6. • Press **Exit** when finished.

Note: In Windows®XP, the drivers have to be loaded for every USB port the device is plugged in to.

Note: Windows® 7 screens will look different from pictures above. Follow the default options when prompted.

EMC Precautions

The Avant REMsp + needs special precautions regarding EMC and needs to be installed and put into service according to the following EMC information.

List of all cables and maximum lengths of cables, transducers and accessories:


| Transducer / Accessories | Maximum Cable length |
|--------------------------|----------------------|
| USB Cable | 2,9 meters |
| All Speakers | 2,9 meters |

Warnings!

- The use of accessories and cables other than those specified, with the exception of transducers and cables sold by the manufacturer of the Avant REMsp as replacement parts for internal components, may result in increased emissions or decreased immunity of the Avant REMsp.
- The Avant REMsp should not be used adjacent to or stacked with other equipment and if adjacent or stacked use is necessary, the Avant REMsp should be observed to verify normal operation in the configuration in which it will be used.
- The Avant REMsp may be interfered with by other equipment, even if that other equipment complies with CISPR emission requirements.
- The Avant REMsp does not have life supporting function
- Portable and mobile RF communications equipment can affect the Avant REMsp.

| Guidance and manufacturer's declaration – electromagnetic emissions | | |
|--|----------------|--|
| The Avant REMsp is intended for use in electromagnetic environment specific below. The customer or the user of the Avant REMsp should assure that it is used in such an environment. | | |
| Emission test | Compliance | Electromagnetic environment - guidance |
| RF emissions CISPR 11 | Group 1 | The Avant REMsp uses RF energy only for its internal function. Therefore, its RF emissions are very low and are not likely to cause any interference in nearby electronic equipment. |
| RF emissions CISPR 11 | Class B | The Avant REMsp is suitable for use in all establishments, including domestic establishments and those directly connected to the public low - voltage power supply network that supplies buildings used for domestic purposes. |
| Harmonic emissions IEC 61000-3-2 | Non applicable | |
| Voltage fluctuations / flicker emissions IEC 61000-3-3 | Non applicable | |

| Guidance and manufacturer's declaration – electromagnetic immunity | | | |
|--|--|--|---|
| The Avant REMsp is intended for use in electromagnetic environment specific below. The customer or the user of the Avant REMsp should assure that it is used in such an environment. | | | |
| Immunity test | IEC 60601 test level | Compliance level | Electromagnetic environment - guidance |
| Electrostatic discharge (ESD) IEC 61000-4-2 | +/- 6 kV contact +/- 8 kV air | +/- 6 kV contact +/- 8 kV air | Floors should be wood, concrete or ceramic tile. If floors are covered with synthetic material, the relative humidity should be at least 30%. |
| Electrical fast transient / burst IEC 61000-4-4 | +/- 2 kV for power supply lines +/- 1 kV for input / output lines | +/- 2 kV for power supply lines +/- 1 kV for input / output lines | Mains power quality should be that of a typical commercial or hospital environment. |
| Power frequency (50/60 Hz) Magnetic field IEC 61000-4-8 | 3 A/m | 3 A/m | Power frequency magnetic fields should be at levels characteristic of a typical location in a typical commercial or hospital environment. |

| Guidance and manufacturer's declaration – electromagnetic immunity | | | |
|--|------------------------------|-------------------------|--|
| The Avant REMsp is intended for use in electromagnetic environment specific below. The customer or the user of the Avant REMsp should assure that it is used in such an environment. | | | |
| Immunity test | IEC 60601- test level | Compliance level | Electromagnetic environment - guidance |
| | | | Portable and mobile RF communications equipment should be used no closer to any part of the Avant REMsp, including cables, than the recommended separation distance calculated from the equation applicable to the frequency of the transmitter. Recommended separation distance: |
| Conducted RF IEC 61000-4-6 | $3 V_{\text{eff}}$ | $3 V_{\text{eff}}$ | $d = 1,17 \times \sqrt{P}$ |
| Radiated RF IEC 61000-4-3 | 3 V/m 80 MHz to 2,5 GHz | 3 V/m | $d = 1,17 \times \sqrt{P}$ 80 to 800 MHz $d = 2,33 \times \sqrt{P}$ 800 MHz to 2,5 GHz |
| | | | Where P is the maximum output power rating of the transmitter in watts (W) according to the transmitter manufacturer and d is the recommended separation distance in meters (m). Field strengths from fixed RF transmitters, as determined by an electromagnetic site survey ^a , should be less than the compliance level in each frequency range ^b . Interference may occur in the vicinity of equipment marked with the following symbol:  |


| | |
|--------|---|
| NOTE 1 | At 80 MHz and 800 MHz, the higher frequency ranges applies. |
| NOTE 2 | These guidelines may not apply in all situations. Electromagnetic propagation is affected by absorption and reflection from structures, objects and people. |
| a | Field strengths from fixed transmitters, such as base stations for radio (cellular/cordless) telephones and land mobile radios, amateur radio, AM and FM radio broadcast and TV broadcast cannot be predicted theoretically with accuracy. To assess the electromagnetic environment due to fixed RF transmitters, an electromagnetic site survey should be considered. If the measured field strength in the location in which the Avant REMsp is used exceeds the applicable RF compliance level above, the Avant REMsp should be observed to verify normal operation. If abnormal performance is observed, additional measures may be necessary, such as reorienting or relocating the Avant REMsp |
| b | Over the frequency range 150 kHz to 80 MHz, field strengths should be less than 3 V/m. |

| Recommended separation distances between Portable and mobile RF communications equipment and the Avant REMsp | | | |
|--|--|---|--|
| The Avant REMsp is intended to use in an electromagnetic environment in which radiated RF disturbances are controlled. The customer or the user of the Avant REMsp can help prevent electromagnetic interference by maintaining a minimum distance between portable and mobile RF communications equipment (transmitters) and the Avant REMsp as recommended below, according to the maximum output power of the communications equipment. | | | |
| Rated maximum output power of transmitter W | Separation distance according to frequency of transmitter meters | | |
| | 150 kHz to 80 MHz $d = 1,17 \times \sqrt{P}$ | 80 MHz to 800 MHz $d = 1,17 \times \sqrt{P}$ | 800 MHz to 2,5 GHz $d = 2,33 \times \sqrt{P}$ |
| 0,01 | 0,12 | 0,12 | 0,233 |
| 0,1 | 0,37 | 0,37 | 0,74 |
| 1 | 1,17 | 1,17 | 2,33 |
| 10 | 3,7 | 3,7 | 7,40 |
| 100 | 11,7 | 11,7 | 23,3 |
| For transmitters rated at a maximum output power not listed above, the recommended separation distance d in meters (m) can be estimated using the equation applicable to the frequency of the transmitter, where P is the maximum output power rating of the transmitter in watts (W) according to the transmitter manufacturer. | | | |
| NOTE 1 At 80 MHz and 800 MHz the separation distance for the higher frequency range applies. | | | |
| NOTE 2 These guidelines may not apply in all situations. Electromagnetic propagation is affected by absorption and reflection from structures, objects and people. | | | |

A medical grade computer is recommended.

Safety

Regarding electrical safety, this device is to be used only by professionals in the hearing healthcare industry.

It is Class II Medical Electrical (ME) equipment that is part of an ME system.  Power is supplied by the USB cable connected to a computer. An in-line optical isolator with medical power supply is recommended to achieve optimum safety. A medical grade computer is recommended and a medical grade isolation transformer will help minimize ground current. It is recommended that powered speakers are connected to an isolation transformer. The use environment should be between 10°C and 35°C, humidity within 30% to 90%. All components with patient contact are made of bio-compatible materials.

The colored light on the device only signifies that the device is operational and the software is running (green). The color does not signify any dangerous or faulty condition. Mild soapy water is the preferred cleaning solution.

All repairs should be sent to Medrx for evaluation and / or repair.

Symbols that may be used:



Read the instruction manuals for safe usage of the device. (operating instructions)



or **SN** Indicates that the device serial number will follow.



Type B applied part.



Manufacturer (Medrx)



Authorized Representative in Europe

Congratulations

Your MedRx system is now set up and ready for use. Please consult the Training Manual and the Interactive Help Files within the software for instructions and procedures. The Training Manual is available in PDF format on CD and at www.medrx-usa.com in our Download Section.

Limited Warranty

MedRx, Inc warrants this product to be free from defects in material and workmanship for one year from the time of purchase. If this system fails to perform as specified during this period, the purchaser is responsible for calling MedRx at (888) 392-1234 or (727) 584-9600. The company's representative will advise the owner to either return specific components or the entire system to:

MedRx, Inc.
1200 Starkey Road #105
Largo, FL 33771 USA

MedRx will repair or replace any defective devices, fully test the system and/or components and ship the system promptly back to the owner. There is no cost for the repair or return shipping, provided the system is one year old or less and has not been misused, abused or damaged. Such damage includes, but is not limited to, dropping, exposure to excessive heat greater than 100°F and water/liquid damage.

Repair or replacement of the system as provided under this warranty is the sole and exclusive remedy of the purchaser. MedRx shall not be liable for any consequential or incidental damages or for breach of any express or implied warranty. Except to the extent of applicable law, any implied warranty, merchantability or fitness of this product is limited to the duration of this warranty.

MedRx will, at its discretion, service and repair out of warranty products at the purchaser's request, charging for parts and labor as necessary.

The limited warranty is deemed void if software or hardware is installed on this product which is not pre-approved by MedRx, Inc. Approved software includes NOAH™ and HIMSA approved hearing aid manufacturer programming modules for fitting hearing aids.

MedRx, Inc is not responsible for problems resulting from installation of unapproved software or hardware. In the event of unapproved software or hardware installed on the system causing a conflict, MedRx will service the product for a fee to be determined at the time of service.

Any extension of this warranty past the initial one-year warranty is subject to the following (where applicable).

1. A \$300 deductible per repair.
2. Extended warranty does not include cables, connectors or peripherals.
3. Extended warranty of the Video Otoscope covers optics only.



#0086

MedRx

www.medrx-usa.com



1200 Starkey Rd., #105, Largo FL 33771 U.S.A.

Toll Free: (888) 392-1234 • (727) 584-9600

Fax: (727) 584-9602 • Email: medrx@medrx-usa.com



MedRx's Authorized Representative in Europe

(Regulatory affairs only)

Emergo Europe, Molenstraat 15

2513 BH The Hague, The Netherlands

Tel: (31) (0) 70 345-8570 • Fax: (31) (0) 70 346-7299