

The MedRx Tinnometer provides a whole new approach to tinnitus assessment

- ✓ *Customized stimulus*
- ✓ *Control the level, shape & frequency*
- ✓ *Built-in tinnitus report*
- ✓ *Save and recall sessions*
- ✓ *NOAH™ compatible*



*Call Us Today*  
**888-392-1234**

*Break away  
from the limitations  
of your audiometer  
with a revolutionary  
new tool*

TIN-S-AD1258-2

**MedRx**®

[www.medrx-usa.com](http://www.medrx-usa.com)

727-584-9600  
1200 Starkey Rd, Suite 105  
Largo, FL 33771



*To Learn More*

**888-392-1234**  
[www.medrx-usa.com](http://www.medrx-usa.com)

Call MedRx Today 727-584-9600 or 888-392-1234 To Schedule A FREE Online Demo

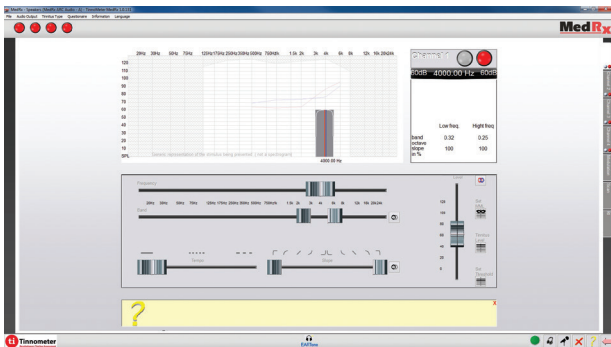


**Add to Existing  
MedRx Audiometers**

**or**

**Use the New  
Tinnometer System**

*Confidently track your  
patient's tinnitus with tools  
designed specifically  
for tinnitus*



*Customized  
Reports Specific  
to Tinnitus Assessment  
and Medicare  
Requirements*

Tinnitus Assessment						
Ear:	Tinnitus pitch Match (Hz)	Tinnitus Band With	Threshold Intensity (dB SPL)	Tinnitus Band Octave	Tinnitus Slope %	Relative Tinnitus Intensity (SL)
Right	3640 Hz	3156 Hz - 4198 Hz	56 dB	0.33	100	2 SL
Left	3640 Hz	3156 Hz - 4198 Hz	56 dB	0.33	100	2 SL

Ear:	Masker Center Frequency (Hz)	Masker Band With	Masker Intensity (dB)	Masker Band Octave	Masker Slope %
Right	3640 Hz	3156 Hz - 4198 Hz	60 dB	0.33	100
Left	3640 Hz	3156 Hz - 4198 Hz	60 dB	0.33	100

Ear:	Masker relative Frequency Pitch Mask: Masker	Relative Width	Relative Intensity (SL)	Octave Difference	Slope Difference
Right	0 Hz	249.32 %	4 dB	0	0
Left	0 Hz	249.32 %	4 dB	0	0

Diagnosis: H93.11 Tinnitus, right ear

**CPT 92625  
Medicare Billing for  
Tinnitus Assessment  
with an Average \$72  
Reimbursement**

**Add Recurring Revenue  
with Yearly Tinnitus  
Assessments**



*Track Changes  
in Tinnitus Easily with  
NOAH™ Sessions*

*Quickly  
Perform Tinnitus  
Assessment*

**ti** Break away from the limitations of your audiometer with a revolutionary new tool