

M

STUDIO

Software

MedRx

Studio Software Installation Manual





0123
TÜV SÜD Product Services GmbH
Ridlerstraße 65 • 80339 Munich • Germany



www.medrx-usa.com



1200 Starkey Rd., #105, Largo, FL 33771 U.S.A.
Toll Free: (888) 392-1234 • (727) 584-9600
Fax: (727) 584-9602 • Email: medrx@medrx-usa.com



MedRx's Authorized Representative in Europe
DGS Diagnostics A/S
Audiometer Alle 1 • 5500 Middelfart • Denmark



MedRx's Archived manuals are available at www.medrx-usa.com/manuals-archived/

Contents

Computer Requirements	4
Software Installation.....	5
Connecting Device	7
Sound Card Settings.....	8
Connecting to a Database.....	9
Limited Warranty.....	11





Computer Requirements

MedRx Minimum Computer Specs:

Windows® PC compatible computer
Intel™ i5 Dual Core, 2.0 GHz or better
4 GB RAM
20 GB free hard drive space
Available 2.0 USB port
Windows 7, 8 or 10 Professional (32 or 64-bit)
Compatible with Windows Surface Tablet
Compatible with 3.0 USB

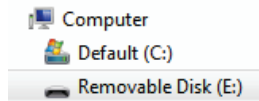
MedRx Recommended Computer Specs:

Windows® PC computer
Intel™ i5 Quad Core or better
8 GB RAM or more
Available USB 2.0
Graphics Adapter with 2GB Dedicated Video Memory
50 GB or more free hard drive space
High Speed Internet Connection
Windows 10 Professional 64-bit
Compatible with 3.0 USB

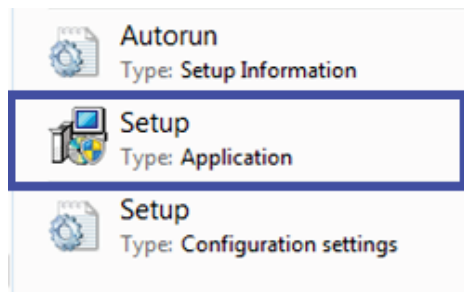
Software Installation



1. Insert the MedRx USB Flash Drive into a USB port:
 - Launch **My Computer**
 - Locate USB Drive



(E:) may vary depending on the USB port selected. Consult your computer's documentation.

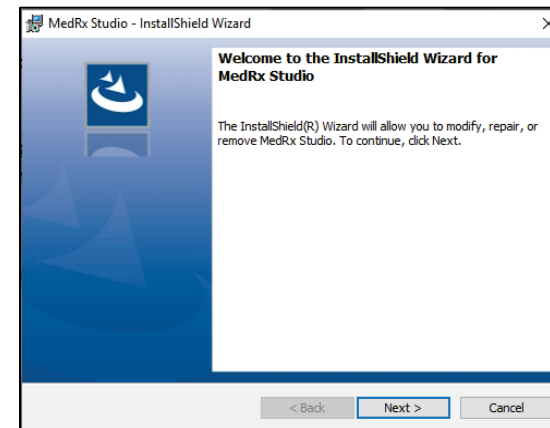


2. Double click on **Setup** to launch:

NOTE: If requested, *Accept Permission to Install Software.*

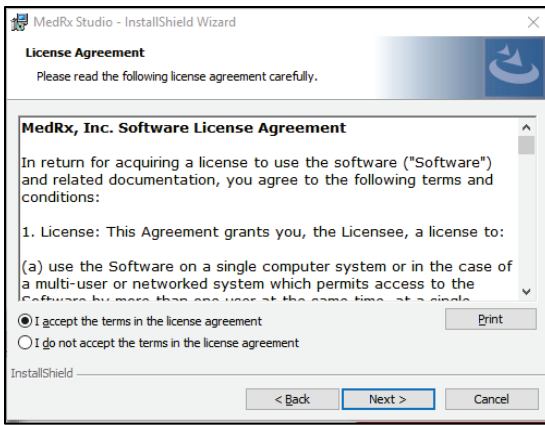


3. On the Setup screen, choose **Install MedRx Studio.**

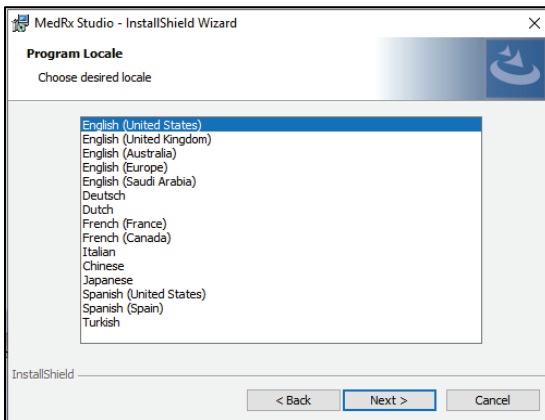


4. This is the Welcome screen.

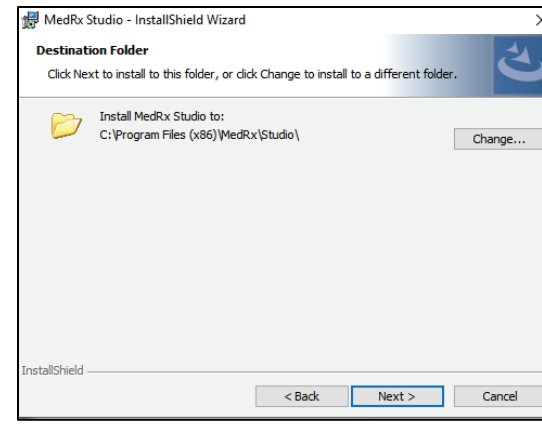
- To continue, click **Next.**



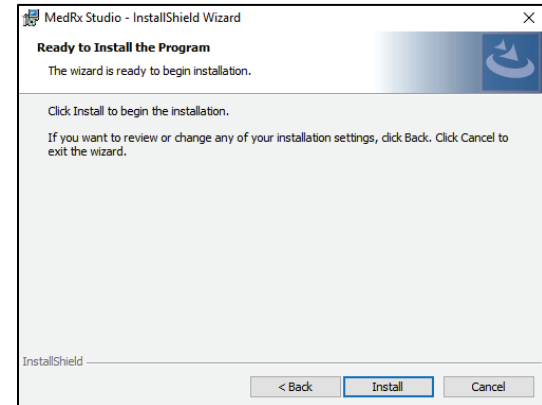
5. Read the Software License Agreement. This important document defines the acceptable usage of the Studio Software.
 - After reading the agreement, select **I accept...**
 - Click **Next**.



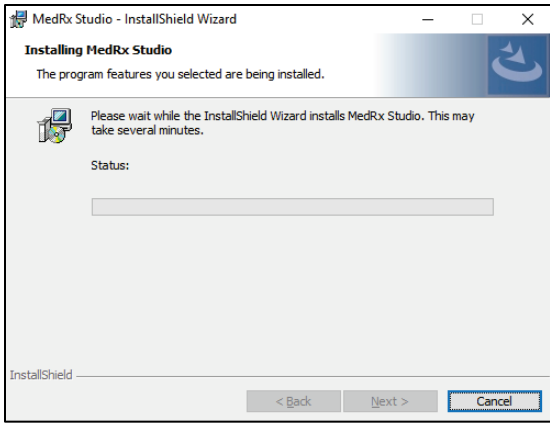
6. This screen sets the language and location choice.
 - Make a selection and click **Next**.



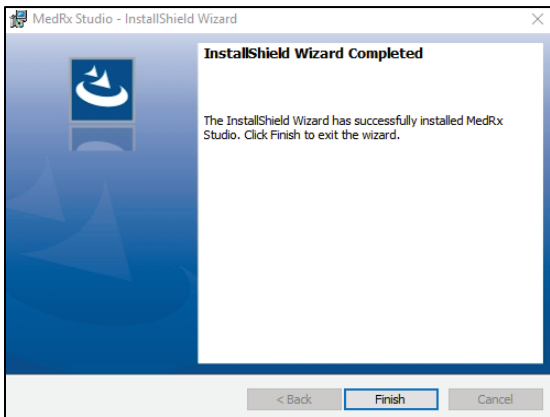
7. This screen indicates the location of the program files. The default location is recommended for most users. If necessary, this location can be changed.
 - To continue with the default settings, click **Next**.
NOTE: To change the location of the files (advanced users or system administrators only, click Change).



8. Installation of Program is ready to start.
 - To continue, click **Install**.
 - To make changes, click **Back**.



9. Installation is in process.



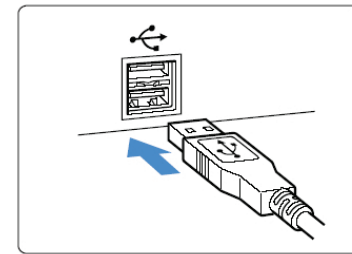
10. When the installation is complete.

- Click **Finish**.

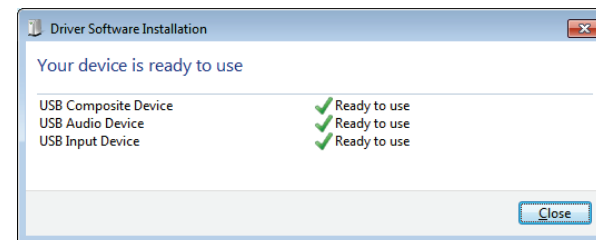
Connecting Device

Your MedRx products are USB powered.

Connect the USB cable from the MedRx device to your computer.



Wait for the system to copy and install default Windows drivers.



When this screen appears and all devices are “Ready to use”.

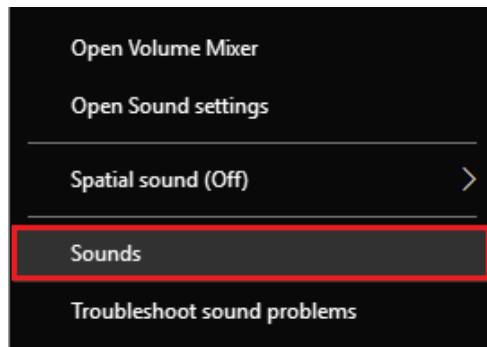
- Click **Close**.

Sound Card Settings

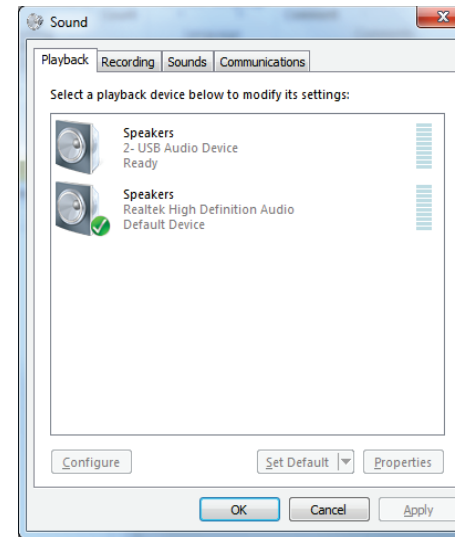
Next you need to confirm or set the default Windows sound card settings. This will route all non-MedRx Windows sounds to the internal sound card of your computer. (These sounds include event notifications such as new e-mail and error warnings as well as audio and video playback.)



1. **Right click** the speaker icon in your system tray.



2. Select the **Sounds** option from the list.



3. In the Windows Sound control panel, under the Playback tab and the Recording tab, make sure the MedRx Audio Device is not set as default. If it is default, change this by clicking on your system (non-MedRx) audio device and then choose Set Default.

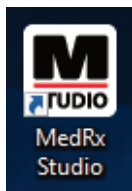
NOTE: The internal sound card on your computer will likely not have the same name as this screen shot. Consult your computer's documentation for the name of the internal sound card and set this control accordingly.

4. Click **OK**.

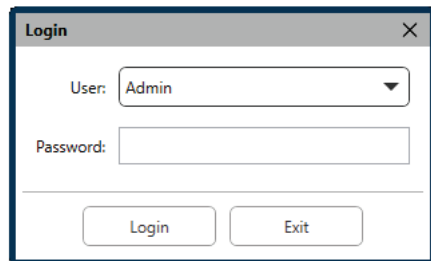
Congratulations you have set-up your new MedRx Device

Connecting to a Database

The MedRx Studio software can run with NOAH™ Systems, OtoAccess, MS SQL Express, or without database access.



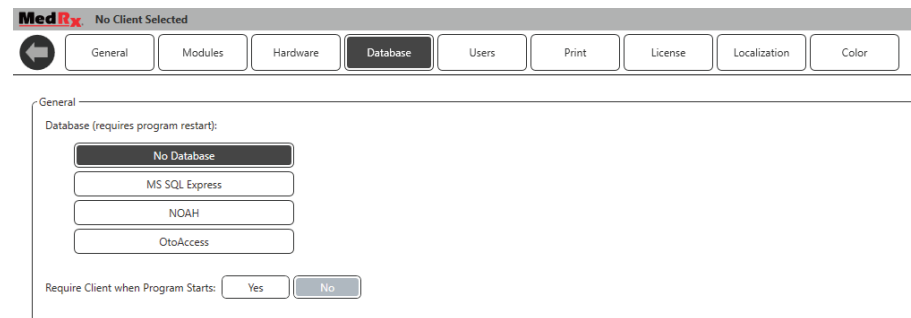
To set-up a Database, double click the MedRx Studio icon on your Windows Desktop.



If the Login window appears, click Login. There is no password set on initial installation.



Click the settings wheel in the top right menu bar.



Select Database from the tabs. Click on your desired Database. Close the MedRx Studio software to apply changes.

Note: Only databases that are set up will appear.

Database Set Up



Without a Database

- Double click the MedRx Studio shortcut on your Windows Desktop.



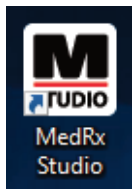
NOAH

- Download and install NOAH.
- Launch NOAH.
- Select a patient.
- Launch MedRx Studio module following NOAH procedures.



OtoAccess

- Download and install OtoAccess.
- Launch OtoAccess.
- Select a patient.
- Launch MedRx Studio module following OtoAccess procedures.

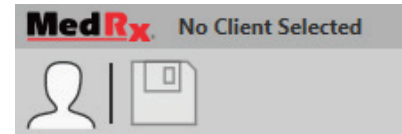


MS SQL Express

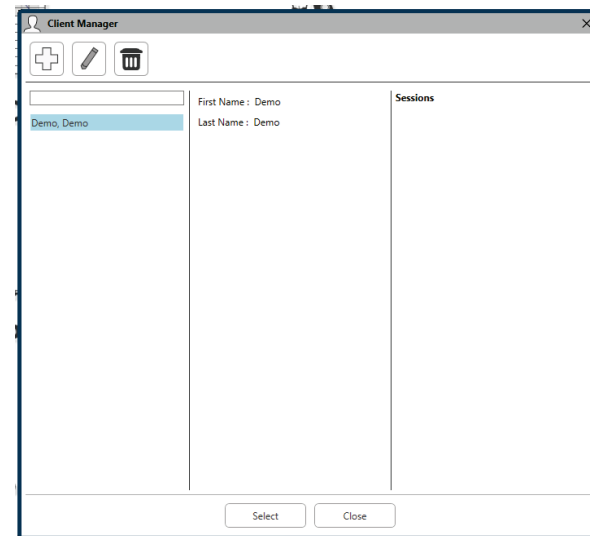
- Download and install MS SQL Express.
- Run MedRx MS SQL database set up.

- Double click the MedRx Studio shortcut on your Windows Desktop.

Note: MedRx provides access to SQL database connections. The database owner must configure the database and backup policies to meet local regulatory requirements.



- **Select Client** in the top left corner.



- **+** - Create client.
- **Pencil** - Edit client.
- **Trash** - Delete client.

Limited Warranty

MedRx, Inc warrants this product to be free from defects in material and workmanship for one year from the time of purchase. If this system fails to perform as specified during this period, the purchaser is responsible for calling MedRx at (888) 392-1234 or (727) 584-9600. The company's representative will advise the owner to either return specific components or the entire system to:

MedRx, Inc.
1200 Starkey Road #105
Largo, FL 33771 USA

MedRx will repair or replace any defective devices, fully test the system and/or components and ship the system promptly back to the owner. There is no cost for the repair or return shipping, provided the system is one year old or less and has not been misused, abused or damaged. Such damage includes, but is not limited to, dropping, exposure to excessive heat greater than 100°F and water/liquid damage.

Repair or replacement of the system as provided under this warranty is the sole and exclusive remedy of the purchaser. MedRx shall not be liable for any consequential or incidental damages or for breach of any express or implied warranty. Except to the extent of applicable law, any implied warranty, merchantability or fitness of this product is limited to the duration of this warranty.

MedRx will, at its discretion, service and repair out of warranty products at the purchaser's request, charging for parts and labor as necessary.

The limited warranty is deemed void if software or hardware is installed on this product which is not pre-approved by MedRx, Inc. Approved software includes NOAH™ and HIMSA approved hearing aid manufacturer programming modules for fitting hearing aids.

MedRx, Inc. is not responsible for problems resulting from installation of unapproved software or hardware. In the event of unapproved software or hardware installed on the system causing a conflict, MedRx will service the product for a fee to be determined at the time of service.

Any extension of this warranty past the initial one-year warranty is subject to the following (where applicable).

1. A \$300 deductible per repair.
2. Extended warranty does not include cables, connectors or peripherals.