



Welcome to the
New Generation

AVANT ARC

Combining the Power
of Audiometry and
Real Ear Measurement
into One System!

With the ever-growing demand
for portability, MedRx has merged
both diagnostic and fitting
capabilities into one small, USB-
powered, software-driven system.

AVANT ARC Audiometry/ REM Combination

MedRx AVANT ARC

- Complete Air, Bone, Speech and Free Field Audiometry
- Binaural Live Speech Mapping
and Real Ear Measurement
- Powerful 3rd Party Counseling Tools
- Built-in Special Tests, Word Lists and Auto-Scoring
- PC Based and Portable
- HID device - True Plug and Play

AVANT ARC

Air, Bone, Speech & Masking Audiometry

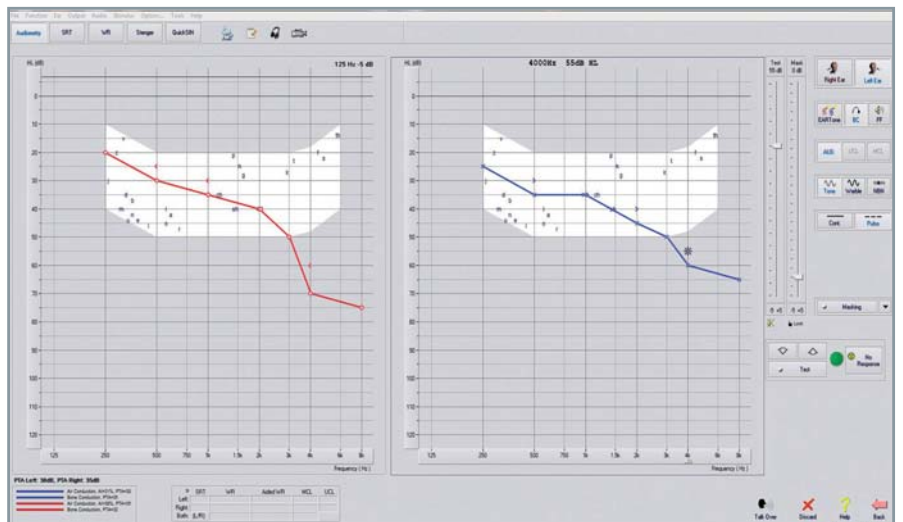
AVANT ARC

ARC Standard Accessories:

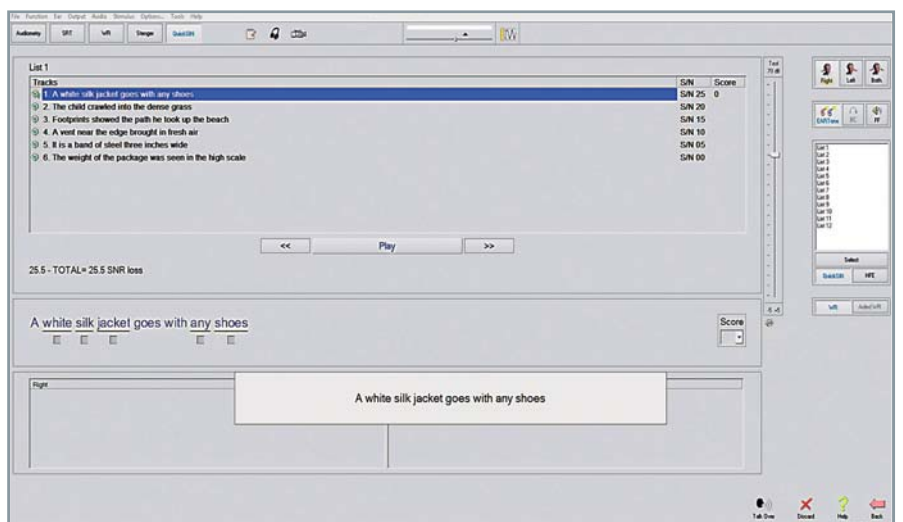
- Sure-Probe™ Binaural Probe Microphone System with Lighted Visual Cues
- Headphones and a Powered Set of Speakers
- Probe Tubes
- DD45 Headphone
- Bone Conductor
- Operator Mic / Monitor Headset
- Patient Response Switch
- Talkback Microphone
- External Power Supply
- Auditec Sound File License
- USB Cable, Software, Manuals & Carrying Case
- Optional RECD Coupler



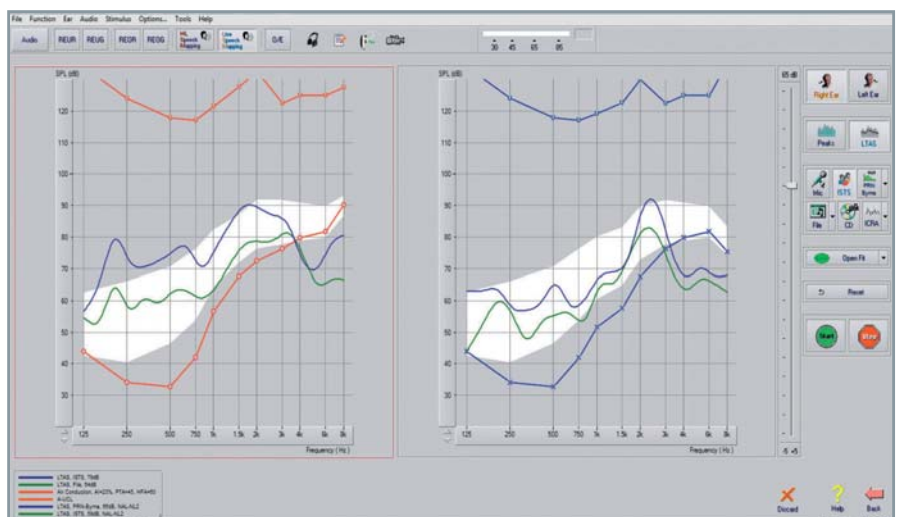
Underside of device



AVANT ARC – Audiometry



AVANT ARC – Optional QuickSIN™ Test



Live Speech Mapping including MSS target (other available targets; DSL v5.0, NAL-NL1 and NAL-NL2)

The AVANT ARC

Audiometry & REAL EAR Measurement Combined



The ARC software has excellent counseling tools

MedRx AVANT ARC

The AVANT ARC combines the power of PC-based Audiometry with the fitting and counseling benefits of REM & Live Speech Mapping into one compact device.

Complete air, bone, speech and masking combined with full REAL EAR and Live Speech Mapping provides the professional with the tools needed to fully test, fit and effectively counsel patients and 3rd-parties all in a sleek, portable and lightweight design.

ARC Software

For loading software, ARC is designed around a common HID protocol, which automatically recognizes and loads drivers when plugged into any USB port – no more dedicated ports and drivers to load manually. This unique system is NOAH™, TIMS®, Blueprint™ and Sycle. Net™ compatible.

Available Tests

The ARC offers pure tone audiometry via earphones and bone conduction, masking and speech audiometry with SRT (Speech Recognition Threshold), WR (Word Recognition), SISI (Short Increment Sensitivity Index), ABLB (Alternate Binaural Loudness Balance) and Tone Decay Tests. Additional features are HLS (Hearing Loss Simulator) and MHA (Master Hearing Aid), QuickSIN™ testing and automated audiometry.

In addition to Live Speech Mapping, the AVANT REM software supports all traditional Real Ear Measurements and includes targets for MSS (Modified Speech Spectrum), DSL v5.0, NAL-NL1 and NAL-NL2 as well as HLS (Hearing Loss Simulator) and MHA (Master Hearing Aid) Modules.

Counseling Tools (HLS/MHA)

The Hearing Loss Simulator demonstrates the effect of the client's hearing loss for the spouse or family member. The program attenuates an input signal to simulate the severity of the loss for the third party. The Master Hearing Aid Simulator demonstrates the benefits of amplification of a hearing aid to an inexperienced user. Using these tools can empower the patient and third party to make informed decisions about their hearing healthcare.

Live Speech Mapping
& Real Ear Measurement

AVANT
ARC



DD45 Headphone comes standard with the ARC



Complete your Compact Audiological Suite with the USB Video Otoscope which has a One Cable Connection to your Computer

MedRx International
 Sickingenstr. 10-71
 10553 Berlin, Germany
 Tel.: +49 30 / 70 71 46-50
 Fax: +49 30 / 70 71 46-99
 E-mail: medrx-sales@maico.biz
 Web: www.medrx-int.com

Welcome to the New Generation.

Specs

AVANT ARC

About MedRx

MedRx, Inc. is a U.S. based global manufacturer and developer of advanced computerized diagnostic and hearing instrument fitting technologies, specifically designed for the hearing care professional.

MedRx has created a remarkable new generation of discreet, yet powerful PC-based instrumentation for Audiometry, Real Ear Measurement, Live Speech Mapping, Hearing Instrument Testing & Evaluation and Video Otoscopy.

Technical Specifications

REAL EAR MEASUREMENT

The Device Meets or exceeds all tests required in the ANSI S3.46-1997 Methods of Measurement of Real-Ear Performance Characteristics of Hearing Aids, along with the requirements of IEC/EN 61669:2001.

Probe Microphones (L/R): Dual Electret Microphone Elements
 Probe Microphone Tube: Silicone 1.0 mm Nominal Diameter
 Measurement Range: 40-120 ± 3 dB SPL
 Measured Frequency Range: 125-8000Hz
 Test Stimuli: Broadband Noise and Synthesized Random Noise - Pink, White, Byrne LTASS and ANSI weighted; ICRA; ISTS Microphone, File, CD-ROM for Live Speech Mapping, Chirp

Test Stimulus Levels at 1m: 40-90 dB SPL in 1 dB Steps - 200Hz through 8K Hz (depending on speaker wattage and efficiency)

Test Stimulus Accuracy: ± 3dB SPL
 Equalization: Pressure Method
 Analysis Mode: User Selectable 1/3, 1/6, 1/9, 1/12, 1/24, 1/48 Octave Bands

ANSI S3.46-1997 Test Available IEC/EN 61669:2001: Real Ear Unaided Response, Real Ear Unaided Gain, Real Ear Insertion Gain, Real Ear Occluded Response, Real Ear Occluded Gain, Real Ear Aided Response, Real Ear Aided Gain
 Other Test Available: Live Speech Mapping™ with Peaks and LTAS analysis; Real Ear to Coupler Difference, Occlusion Effect, Percentile Analysis

Prescription Methods: NAL-RP, 1/3 Gain, 1/2 Gain, Berger, Pogo 1, Pogo 2, FIG6, DSL m[I/O], NAL-NL1, NAL-NL2

Probe Monitoring: Available with Operator Headset

REM EXTERNAL CONNECTIONS

Power connection: USB 2.0 input 5.0 Volt Bus
 USB 2.0 input: Standard USB "B" socket
 Line-Output jack (REM or Audiometry Speakers): 3.5mm Stereo Jack
 Speaker Output (Internal Amplifier) (2): 3.81mm Pluggable Spring Clamp
 Probe Microphones inputs (2): 8 pin Mini-DIN
 Operator Headset Jack (REM or Audiometry): 3.5mm Stereo Jack
 Patient Headset Jack (Client): 3.5mm Stereo Jack
 Power Jack: 2.1mm X 5.5mm

HEARING LOSS SIMULATOR AND HEARING AID SIMULATOR
 Software based sound equalization with available Live Speech Mapping functionality. Frequency Range 125Hz - 8000 Hz, 13 Band Equalizer

AUDIOMETRY

Standards: Clinical Audiometer as per ANSI S3.6-2010 Type 2 AE (IEC 60645-1 & 2), Tone Audiometry, Speech Audiometry
 Channels: Two channels
 Outputs: DD45, IP30 Insert Earphones, EAR 3A® Insert Earphones or TDH 39 Headphones, B71 Bone Conductor, Free Field-Line Level Output or Internal Amplifier

Tone Stimuli: Pure Tone, Warble Tone, Continuous or Pulsed, Warble modulation frequency and Pulse period are user adjustable.

Masking Signals:
 Tone Audiometry: Narrow Band Noise (default), Speech Weighted Noise, White Noise.
 Speech Audiometry: Speech Weighted Noise (default), White Noise, External Recorded (opposite channel).

Frequency Range: Air: 125Hz - 8000Hz (limited 8000Hz to 12500Hz available)
 USB Power only: 250Hz - 8000Hz
 Bone: 125Hz - 8000Hz (Line Level)
 Sound Field: < 1.0% at 500 Hz, 100dB SPL
 Acoustic Distortion: < -10dB HL from 125 Hz - 8000 Hz (12500 Hz)
 Noise Floor: 1dB or 5dB steps, user selectable
 Attenuation: 1dB or 5dB steps, user selectable
 Minimum / Maximum Output: -10 dB to 120 dB HL at 1 KHz - Air (¼ inch mono jacks), -10 dB to 75 dB_{pk} at 1 KHz - Bone (¼ inch mono jack)
 Free Field Output: Frequency Range 125-8,000 Hz, Dynamic Range 60-90+ dB_{pk} at 1 meter distance, (Using 30 watt stereo amplifier with 89 dB sensitivity speakers)
 Speech Input: Microphone (3.5 mm stereo jacks)
 I/O Jacks - 3.5mm: Operator Headphones (output shared with REM), Operator Talk Forward Microphone, Patient Talk Back Microphone, Free Field (Line Out shared with REM)
 I/O Jacks - 1/4": Left Air Conduction, Right Air Conduction, Bone Conduction, Patient Response Switch

POWER (FOR BOTH REM AND AUDIOMETRY)

USB 2.0 Input: 5.0 Volt Bus
 Max Power Consumption: Less than 500 mA at 5.0 volts
 Power Supply: 15V DC, 2A
 Internal Speaker Amp: 120V, 60 Hz or 100V - 240V, 50/60 Hz available
 Optional Powered Speakers: Approx. 20 cm x 12 cm x 3 cm Net < 1kg
 Dimensions (L x W x H):
 Weight:



MedRx
 Micro PC-Based Instrumentation

AVANT™ is a Trademark of MedRx

Distributed by: