



MedRx Tinnometer
Tinnitus Assessment

QUICK GUIDE

Tinnometer Basics

Identify Tinnitus

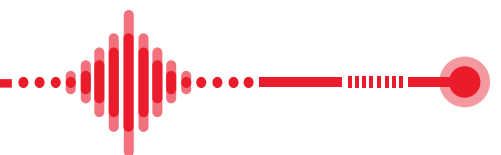
Identify tinnitus frequency level, shape & tempo

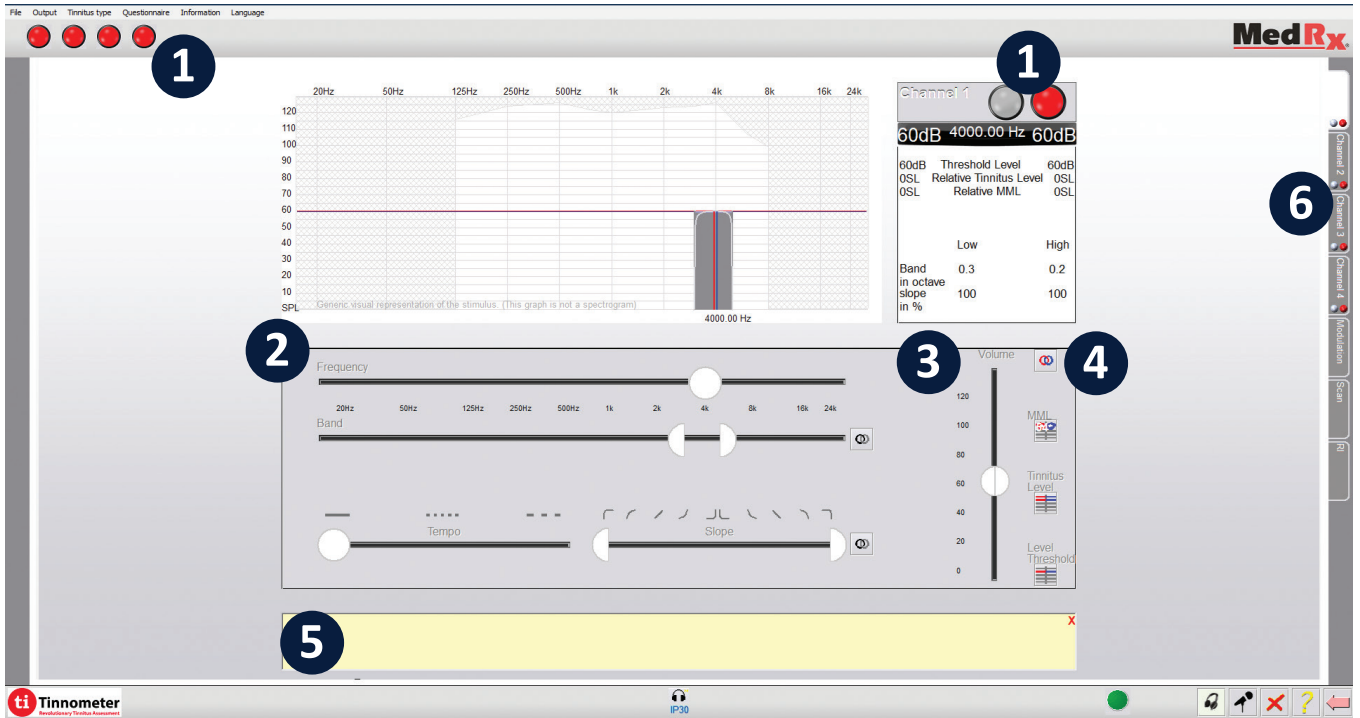
Tinnitus Threshold

Lower matched tinnitus to find threshold

Mask Tinnitus

Raise matched stimuli above tinnitus level and mask for 60 seconds





Overview of Main Screen Functions

1. Click to start stimulus
2. Sliders to change frequency, bandwidth, tempo and slope
3. Slider to change intensity levels
4. Set minimum masking level, set matched tinnitus, set tinnitus threshold
5. Description of each item shows in yellow box at the bottom of screen
6. Channels designed to present multiple tinnitus stimuli simultaneously

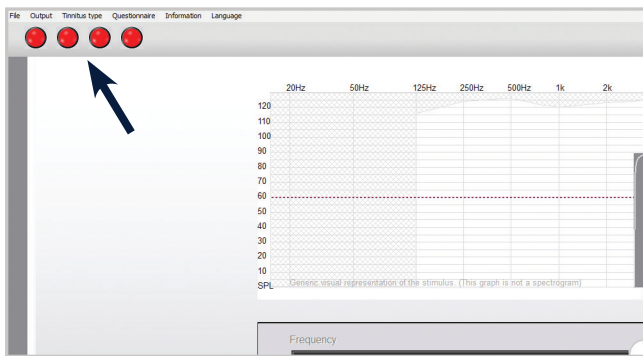
Break away from the limitations of your audiometer with a revolutionary new tool

The MedRx Tinnometer provides a whole new approach to tinnitus assessment. Confidently track your patient's tinnitus with tools designed specifically for tinnitus. Add recurring revenue with yearly tinnitus assessments. Track changes in tinnitus easily with Noah sessions. Generate customized reports specific to tinnitus assessments.

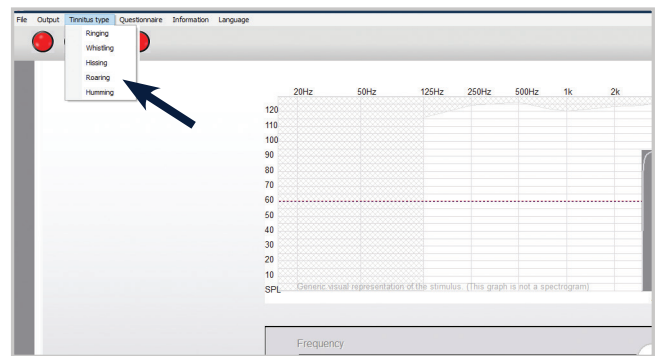
Tinnometer Basics in 3 Quick Steps

Step 1 Identify Tinnitus

Identify tinnitus frequency level, shape & tempo



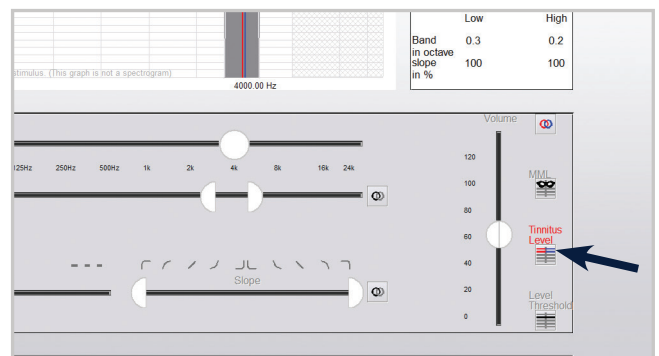
1. Turn tinnitus stimulus on by clicking a red dot.



2. Use drop down to choose description of tinnitus sound.



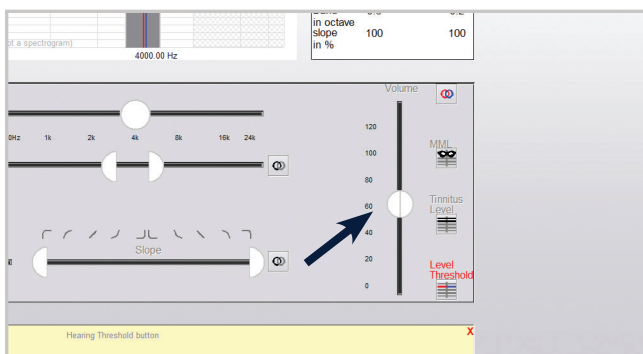
3. Match frequency level and band slope of tinnitus. Tempo will pulse sound to help with differentiation.



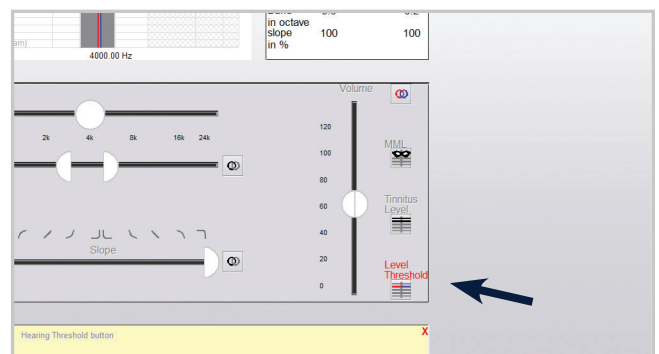
4. Click Tinnitus Level button.

Step 2 Tinnitus Threshold

Lower frequency matched tinnitus to find threshold



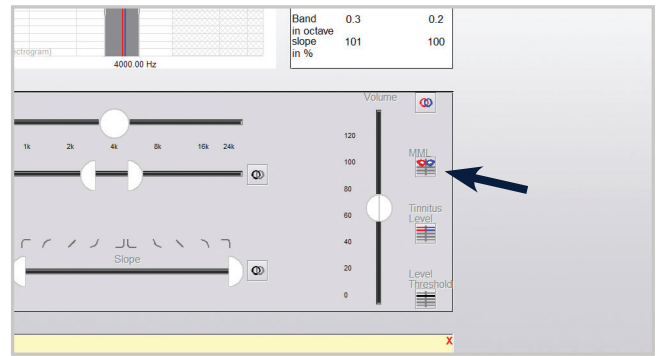
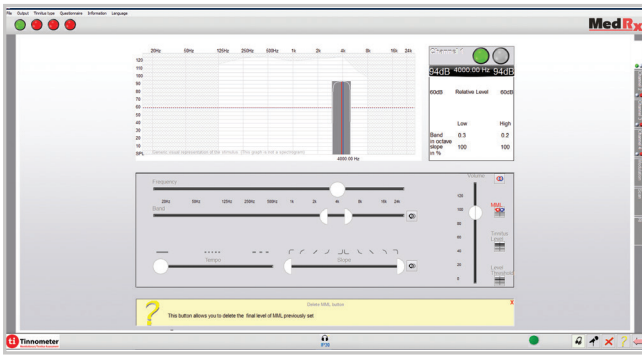
1. Lower level of matched tinnitus to patient threshold (usually 1-5 dB below matched level).



2. Click Level Threshold button.

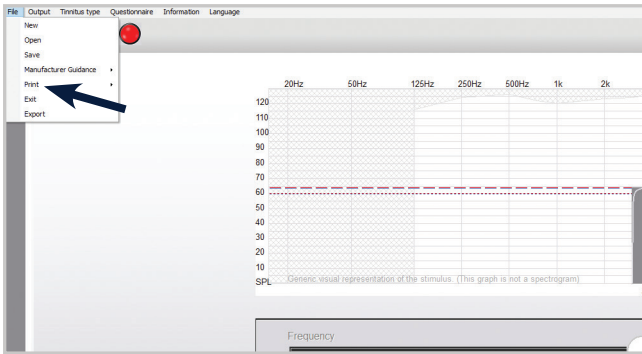
Step 3 Mask Tinnitus

Raise stimulus above tinnitus level and mask for 60 seconds



1. Raise stimulus above tinnitus match (widen bandwidth if needed) until patient states they no longer hear their tinnitus. Play stimulus for 60 seconds and confirm continued masking.

2. Click Set MML (Minimum Masking Level) button.



Recall Prior Sessions When opening prior sessions all data will be accessible. Right click any button to return to previous information.

3. Save session and print report.

Shortcut Keys

- Shift + ←/→: Moves 1/8 Octave
- Page Up/Down: 5 dB Intensity Change
- Frequency Slider: Click and Drag for Small Frequency Changes



Good Things Come in Small Packages

MedRx International
 MAICO Diagnostics GmbH
 Sickingenstr. 70-71
 10553 Berlin, Germany
 Phone: +49 30 70 71 46 50
 Fax: +49 30 70 71 46 99
 Email: medrx-sales@maico.biz
 www.medrx-diagnostics.com

Tinnometer Features

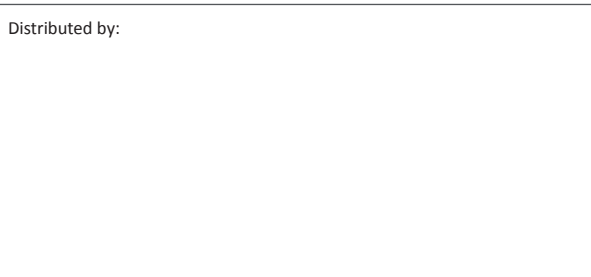
- Control the Level, Shape & Frequency
- Customized Stimulus and Reports
- Test Time Under 10 Minutes
- Save and Recall Sessions
- Quickly Pitch Match
- Noah, TIMS, Blueprint OMS and Sycle Compatible

Standard Accessories

- DD450 Headphones
- Patient Response Switch
- Talkback Microphone
- Operator Mic / Monitor Headset
- Software & Manuals
- Carrying Case

MedRx Minimum Computer Specs:

Windows® PC compatible computer, Intel™ i5, 2.0 GHz or better. 4 GB RAM. 20 GB free hard drive space. Available 2.0 USB Port. Windows 10 or 11 Professional (32 Or 64-Bit).



MX-TIN-INTDS-2 Rev. 2

