

# EduMic Compatibility Guide

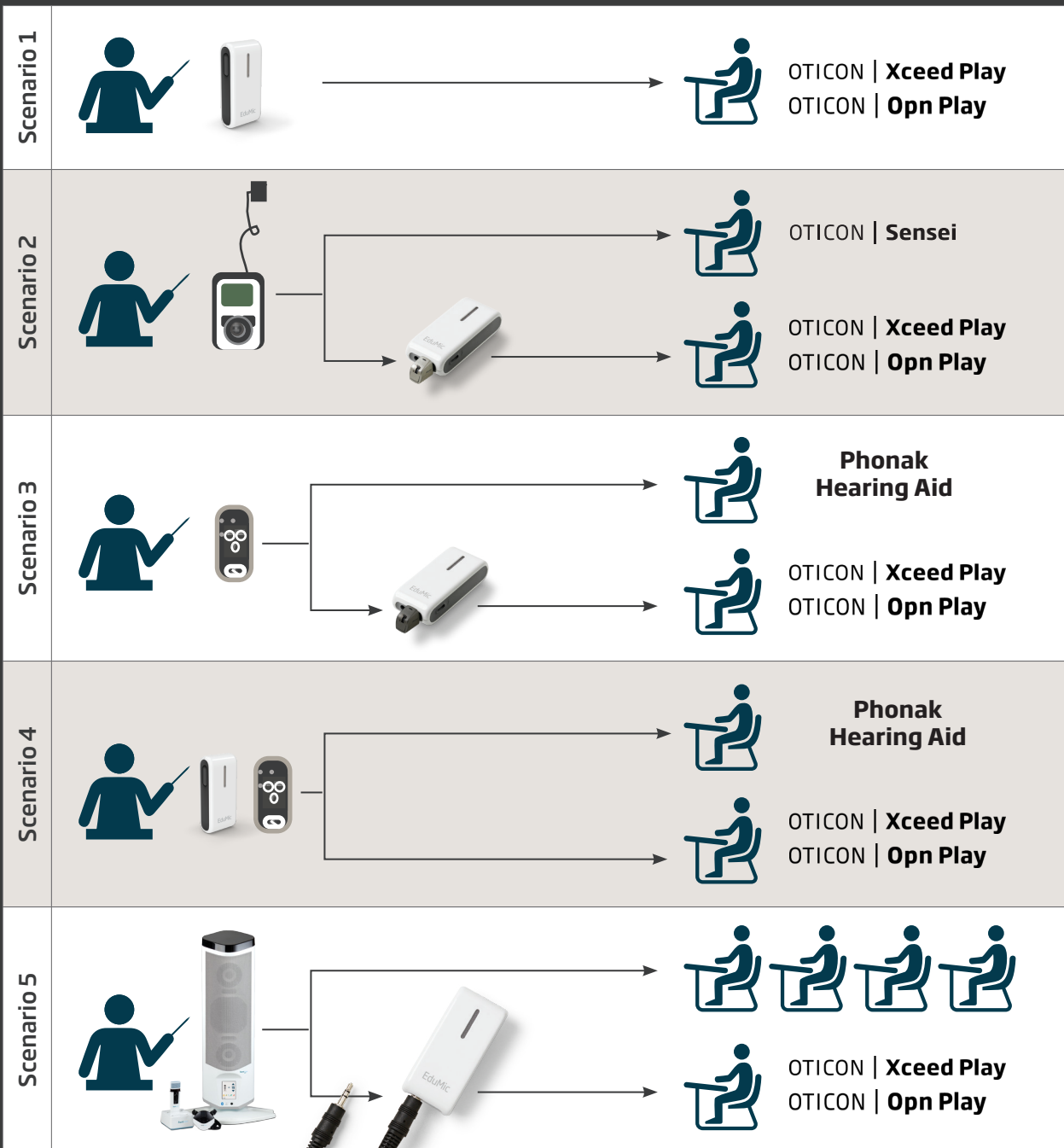




# EduMic Compatibility Guide

This guide provides use case scenarios for EduMic coupled with Oticon hearing aids, as well as other hearing aid, wireless microphone and FM brands. Oticon uses 2.4 GHz low energy Bluetooth® in EduMic and its hearing aids.

	Scenario Description	Technology Description	Hearing Aids	Model
Scenario 1	<p><b>Oticon Bluetooth compatible products</b> Speaker wears EduMic. Listener(s) wear Oticon Bluetooth hearing aids.</p>	EduMic streams directly to Oticon Bluetooth hearing aids.	Opn Play, Xceed Play, Opn S™, Xceed, Opn™, Siya, Oticon Medical Ponto 4 and future Bluetooth hearing aids from Oticon	BTE PP, miniRITE R, miniRITE T miniRITE, BTE, Ponto 4, Ultra Power, Super Power
Scenario 2	<p><b>Oticon hearing aids with varying Oticon technology</b> Speaker wears Oticon Amigo T30 or T31 transmitter system. Listener(s) wear older Oticon or Oticon Bluetooth hearing aids.</p>	For listener(s) wearing older Oticon hearing aids, the Amigo R12 Receiver is plugged into the hearing aid.	Oticon Sensei, Sensei SP, Dynamo, Ponto 3 + Streamer	BTE, Power BTE, Super Power BTE
		For listener(s) wearing Oticon Bluetooth hearing aids, the Amigo R2 Universal Receiver is plugged into the EduMic. The EduMic is placed on a table. Listeners sit no more than 9.5 feet away from the EduMic.	Opn Play, Xceed Play, Opn S, Xceed, Opn, Siya, Oticon Medical Ponto 4 and future Bluetooth hearing aids from Oticon	BTE PP, miniRITE R, miniRITE T miniRITE, BTE, Ponto 4, Ultra Power, Super Power
		For non-Bluetooth hearing aids, please contact Oticon		BTE models, miniRITE T miniRITE
Scenario 3	<p><b>EduMic with Roger Touchscreen Mic when universal receiver is available</b> Speaker wears Phonak Roger Touchscreen Mic.</p>	For listener(s) wearing Oticon Bluetooth hearing aids, the Roger X Universal Receiver is plugged into the EduMic.	Opn Play, Xceed Play, Opn S, Xceed, Opn, Siya, Oticon Medical Ponto 4 and future 2.4GHz hearing aids from Oticon	BTE PP, miniRITE R, miniRITE T miniRITE, BTE, Ponto 4, Ultra Power, Super Power
		For listener(s) wearing Phonak hearing aids, Roger transmits directly to the aids.	Phonak hearing aids	
		For listener(s) wearing non-Bluetooth Oticon hearing aids, use Roger receiver. Receiver model is based on make and model of hearing aid. Receiver is plugged into the hearing aid.	Oticon Sensei, Dynamo or older, Ponto 3	BTE, Power BTE, Super Power BTE
Scenario 4	<p><b>EduMic with Roger Touchscreen Mic when a universal receiver is not available</b> Speaker wears both EduMic and a Phonak Roger Touchscreen Mic</p>	For listener(s), EduMic streams directly to Oticon Bluetooth hearing aids, while Roger transmits directly to Phonak hearing aids. It is an option when a universal receiver is not available.	Opn Play, Xceed Play, Opn S, Xceed, Opn, Siya, Oticon Medical Ponto 4 and future Bluetooth hearing aids from Oticon	BTE PP, miniRITE R, miniRITE T miniRITE, BTE, Ponto 4 Ultra Power, Super Power
Scenario 5	<p><b>EduMic with FrontRow Juno</b> Speaker wears Juno transmitter. The AUX volume on Juno Tower is set to Maximum. EduMic is connected via 3.5 mm audio cable to audio out jack on Juno Tower.</p>	For listener(s) wearing Oticon Bluetooth hearing aids, the voice is transmitted directly to the hearing aids.	Opn Play, Xceed Play, Opn S, Xceed, Opn, Siya, Oticon Medical Ponto 4 and future Bluetooth hearing aids from Oticon	BTE PP, miniRITE R, miniRITE T miniRITE, BTE, Ponto 4 Ultra Power, Super Power
		For listener(s) not wearing hearing aids, the sound is amplified as usual.	For listener(s) not wearing hearing aids, the sound is amplified as usual.	



### LED indicator overview



#### Status indicator

A steady light indicates you are sending sound. A flashing light indicates that EduMic is muted.

○	White	Start-up
⦿	Flashing blue	Pairing in progress
●	Green	ON/microphone mode
⦿	Flashing green	Mute in microphone mode
●	Yellow	Jack/FM mode
⦿	Flashing yellow	Mute in jack/FM mode
●	Red	Pairings cleared
●	Magenta	Telecoil mode
⦿	Flashing magenta	Mute in telecoil mode

### LED indicator overview



#### Power indicator

Charging time for full charging is 2.5 hours. A quick 30 minute charge during a break provides approx. 2.5 hours of use.

When the power indicator flashes RED, there is approx. 2 hours of battery life remaining.

○	White	Start-up
●	Green	Fully charged
⦿	Flashing yellow	Charging
⦿	Flashing red	Battery low

# Oticon Compatibility Decision Tree

What hearing aid technology does the child have?



18508 15555-9915/12.19



www.oticon.com