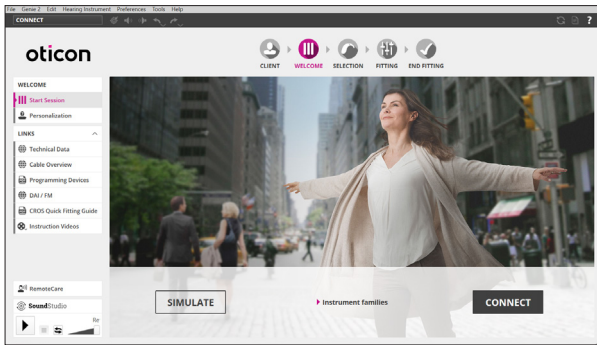


# OTICON | More Quick Guide



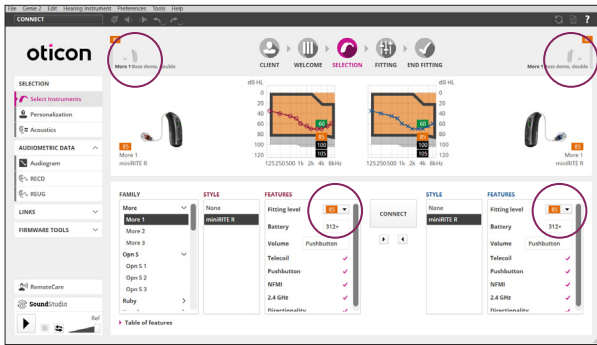
## Opening Screen

In order to navigate through the Genie 2 software, follow the tabs at the top of the screen, working from left to right.



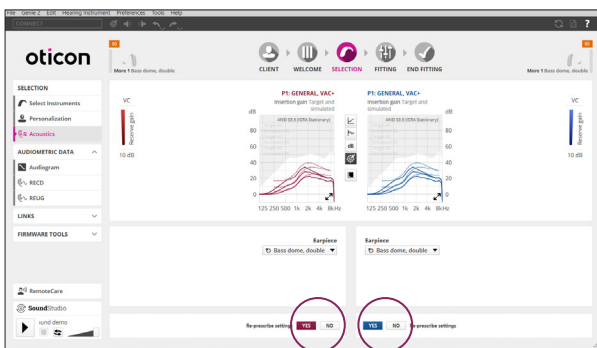
## Welcome Screen

From the welcome screen, either connect to instruments or simulate a fitting.



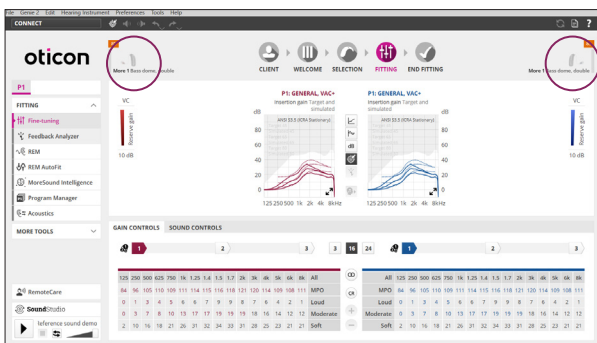
## Selection Screen

Once connected, the bars beside the hearing aids become green. The ability to change the speaker strength is located in the middle of the page.



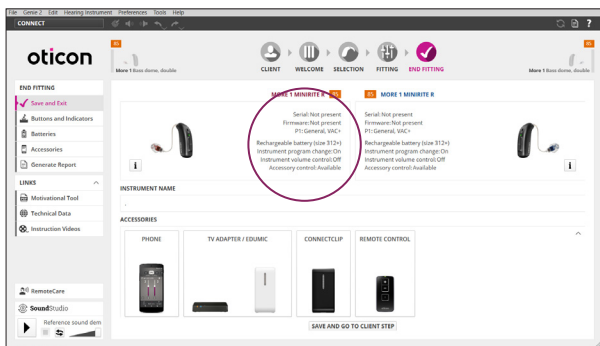
## Selection Screen – Acoustics

Clicking on the vertical menu item labeled “Acoustics” allows for the opportunity to change the selected earpiece. Please note, if an earpiece is changed, be sure to re-prescribe settings at the bottom of the screen.



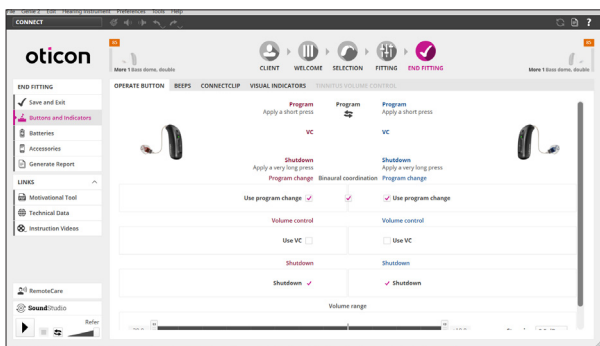
## Fitting Screen

The order of fitting tools visible on the left task pane have changed to make key fitting features easily accessible and convenient. Real time adjustment of gain, adaptation manager and compression can be made in the fitting screen.



## End Fitting Screen

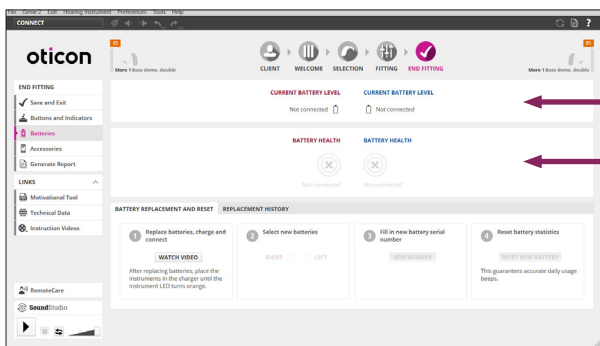
Compatible accessories and general hearing aid information is located on this screen. Accessories are paired outside of the software. If accessories have been previously paired, there will be a red and/or blue indicator showing the accessory that has been successfully paired.



## End Fitting Screen – Buttons and Indicators

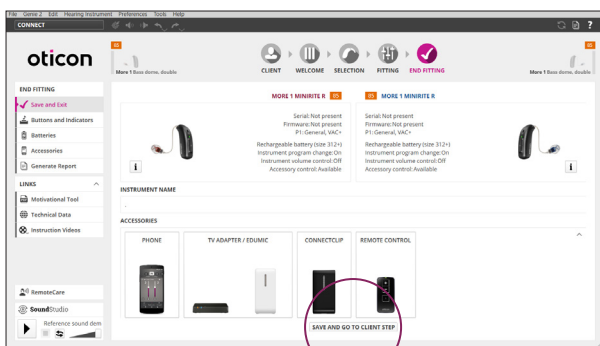
Buttons and Indicators can be accessed via the left task pane. Visual indicators can be programmed with Oticon More miniRITE R.

Hearing aids automatically turn off/on when inserting/removing from charger. Shutdown allows for the hearing aids to be manually turned off/on.



## End Fitting Screen – Batteries

When fitting miniRITE R - rechargeable lithium-ion hearing aids, the Batteries tab can be selected on the left vertical menu to see Current Battery Level (current charge in hearing aids) and overall Battery Health. Additionally, battery replacement and reset can be completed in this screen.



## End Fitting Screen – Save and Exit

Click "Save and Exit" to save the session and exit the software.

**Note:** Settings are automatically saved in the instruments during the programming process.