

PRODUCT INFORMATION AMIGO STAR

The Amigo Star is an ear-level FM receiver that is comfortable, easy to handle and reliable. It is for people with normal hearing who can benefit from Assistive Listening Devices, in order to overcome the negative effects of distance, poor room acoustics, and background noise commonly found in classrooms, lecture halls, auditoriums and similar environments.

Designed for comfort

The comfort of an FM device is a major factor that can influence wearing time. The Amigo Star can be customized to fit each user's ear shape and ear canal size. The Amigo Star uses Corda² thin tubes and domes that come in a range of lengths and sizes, and connect easily to the device. The thin tubes are transparent, so Amigo Star is virtually invisible when worn on the ear. The natural sound quality of Amigo Star ensures a comfortable listening experience.

Easy to handle

Amigo Star is an intuitive, easy to operate device that is ready to use out of the box. With a volume control and channel seek button on the device, set up is instantaneous. The tactile volume control wheel is numbered, ensuring the proper loudness is always obtained. The one-touch channel seek button quickly locks on to the FM channel being transmitted. Amigo Star has an LED status indicator that confirms the system is working and an FM signal is being received.

Reliable

Amigo Star is easy to service thanks to Corda² thin tubes and domes. Unlike devices with the receiver unit in the ear, this disposable coupling to the ear not only ensures comfortable, discreet fit, but is easily replaced on site and is inexpensive. Amigo Star has achieved IP57 classification meaning it is water resistant. Amigo Star is easily cleaned and offers superior wax protection. With its robust construction, it can also withstand accidental drops.

Compatibility

Amigo Star can work with almost any FM transmitter.

User Features

- Amigo Star can be synchronized wirelessly and programmed by Amigo T30/T31/WRP
- Amigo Star can be used with virtually any FM transmitter
- Volume control wheel with on/off function
- Channel selection via push button
- LED status indicator
- Customizable Corda² fitting system
- Water resistance with IP57 classification
- Intelligent sleep mode and off mode
- 6 color choices



Volume control wheel with on/off function

LED status indicator

Customizable Corda² fitting system

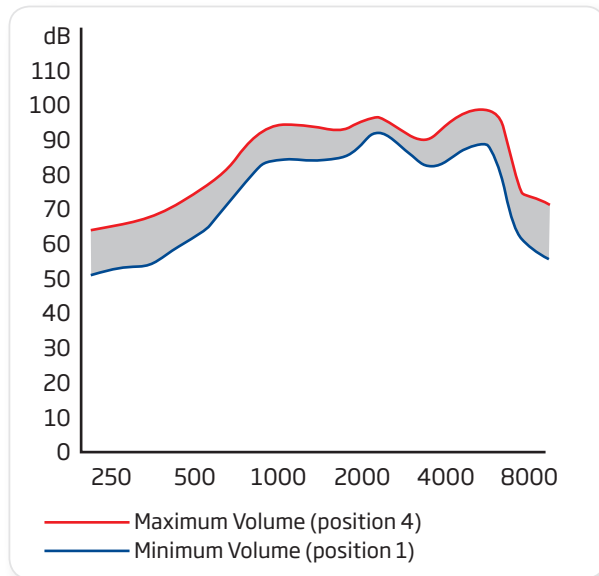
Water resistance with IP57 classification

Channel seek push button

Optional tamper resistant battery compartment

2 cc Coupler

Max. output SPL at VC position 1 and 4*



*Measured with Corda² tube size 1.09 attached to 2 cc BTE Coupler, Amigo T30 transmitter and lapel microphone

AMIGO STAR COLORS



Technical data

Amigo Star

Dimensions	11 x 7.75 x 33.5 mm
Weight (with battery)	3.5 g
Battery Drain	Up to 2.75 mA
Expected Battery Life	55 hours
Dust and water resistance	IP57 classification
Bandwidth with T5/T30/T31	450 - 6000 Hz
Intelligent sleep and off modes	Sleep mode after 60 seconds. Off mode after 90 minutes
Operating frequencies (country dependant)	EU 169 - 188 MHz US 216 - 218 MHz
Programming frequency	3.7 MHz
Channel selection	Up to 30 channels with built in scan function
Recommended channel spacing	150 kHz
Antenna	Built in
Intended climate conditions	-10 - +50° C
FM range	50-100 ft.
Programming range (T30/T31/WRP)	12 inches
SNR	50 dB
Distortion	THD <2% @ 1600 Hz
VC range	14 dB
2 cc coupler Max output	109 dB SPL