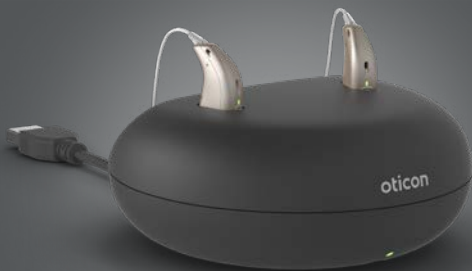


# Instructions for use



## Charger 1.0 miniRITE R

Oticon Opn S™  
Oticon Opn Play™  
Oticon Ruby

## Introduction to this booklet

This booklet guides you on how to use and maintain your new charger. Please read the booklet carefully, including the Warning section. This will help you get the most out of the new charger. If you have additional questions about the charger, please contact your hearing care professional.

| **About** | [Start-up](#) | [Handling](#) | [Warnings](#) | [More info](#) |

For your convenience, this booklet contains a navigation bar to help you easily navigate through the different sections.

## Intended use

<b>Intended use</b>	The charger is intended to recharge hearing aids that contain rechargeable batteries. The product is intended to be used together with the given hearing solution.
<b>Indications for use</b>	There are no indications for use (diagnoses) for the Charger itself.
<b>Intended user</b>	Lay persons including children older than 36 months.
<b>User environment</b>	Home setting.
<b>Contraindications</b>	No contraindications.
<b>Clinical benefits</b>	See clinical benefits of the hearing aid.

### IMPORTANT NOTICE

Please refer to your hearing aid's instructions for use for details on the functionality of your specific hearing aid solution.

## Table of content

### About

Charger	6
Temperature conditions	7

### Start up

Prepare charger	8
Charge the hearing aids	9
Charging time	10

### Handling

Caring for your charger	12
Power the charger using other sources	13

### Warnings

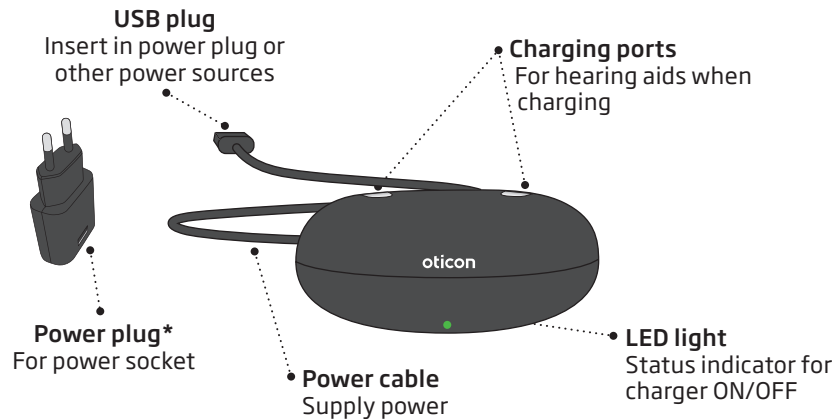
Warnings	14
----------	----

### More info

Troubleshooting guide	16
Charger: Conditions of use	20
International Warranty	26
Australia only	28

## Charger

### What it is and does



\* Power plug will vary from country to country

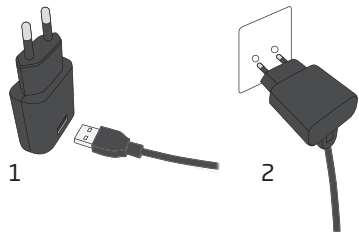
## Temperature conditions

Temperature	Charging condition
Below +5°C	No charging due to low temperature
+10°C to +35°C	Best charging condition. Charging will take up to 3 hours
+5°C to +10°C and +35°C to +40°C	Prolonged charging. Charging will take up to 4 hours
Above +40°C	No charging due to high temperature

Charging will automatically resume when the temperature is within the operating range of +5°C to +40°C.

## Prepare charger

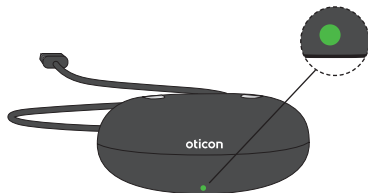
### Connect to power source



1. Insert the USB plug into the power plug.
2. Insert the power plug into a power socket.

The charger will turn on automatically.

### Charger is on



When the charger is connected to power, the green LED turns on.

## Charge the hearing aids

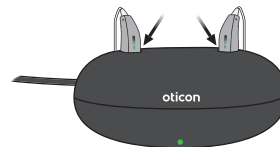
### Place hearing aids in charger



Place the hearing aids in the charging ports as shown in the picture.

The right hearing aid should be placed where the red indicator is. The left hearing aid should be placed where the blue indicator is.

### Charging



The hearing aids LEDs will turn on when the hearing aids are correctly placed in the charger.

**Hearing aid LED charging status:**  
Red /Orange\* = Charging  
Green light = Fully charged

\*depending on the hearing aid family, see hearing aid instruction for use.

## Charging time

Fully charge your hearing aid before first time use.

Charge your hearing aid every night. That ensures you start your day with a fully charged hearing aid.

Charging time may vary depending on the remaining capacity of the battery. If your hearing aid is completely drained the normal charging time is:

3 hours	1 hour	0.5 hour
Fully charged	50% charged	25 % charged

The charging process will automatically stop when the battery is fully charged. Leave the hearing aid in the charger when you do not use it. Remember to keep the charger connected to a power source.

Note charging time may vary between left and right hearing aid.

### IMPORTANT NOTICE

Always leave the charger connected to a power source when the hearing aid is seated in the charging port. Switching off the charger will make the hearing aid turn on and start using battery.

## Caring for your charger

Always make sure that the charger is dry and clean before use. Keep the charging ports clean for dust using a dry cloth. Do not use water or cleaning fluids to clean the charging ports.

Store your charger in a dry location, e.g. in the bedroom, rather than in the bathroom or kitchen.

Keep the charger in a temperature environment of +5°C to +40°C.

## Power the charger using other sources

It is possible to power the charger from other sources with a USB port. Ensure that the power source is USB 2.0 compliant, minimum 500mA output.

### Examples of sources:

- Power bank
- PC
- Car

When using a power bank ensure that it does not have a power-saving or auto-shutdown mode. As this can result in your hearing aids not being fully charged or not charged at all.

### IMPORTANT NOTICE

When recharging the hearing aid use the supplied original power supply 5.0V/1 A, CE and safety marked, for the charger.



## Warnings

For your personal safety and to ensure correct usage, you should familiarise yourself fully with the following general warnings before using your charger. Consult your hearing care professional if you experience unexpected operations or serious incidents with your charger during use or because of its use. Your hearing care professional will support you with issue handling and, if relevant, reporting to the manufacturer and/or the national authorities.

### **Usage of charger**

The charger should be used only as directed and adjusted by your hearing care professional.

### **Risk of burns**

Do not place anything but the hearing aids in the charger ports.

### **Choking hazards**

Charger, hearing aids and their parts should be kept out of reach of children and anyone who might swallow these items or otherwise cause injury to themselves.

*If a small part is swallowed, see a doctor or hospital immediately.*

### **Heat**

The charger must never be exposed to extreme heat, e.g. left inside a parked car in the sun.

The charger must not be dried in microwave ovens or other ovens.

### **Connection to external equipment**

The safety of the use charger when connected to external equipment with an auxiliary input cable and/or with USB cable and/or directly, is determined by the external signal source. When connected to external equipment plugged into a wall outlet, this equipment must comply with IEC-62368-1 or equivalent safety standards.

### **Fire hazards**

The power source in your charger has insufficient energy to cause fire in normal usage conditions.



## Troubleshooting guide

Symptom	Possible causes	Solutions
The charger LED remains turned off when the charger is connected to power	The charger is not switched on	Verify that the power supply is connected correctly  Always control charging starts up to make sure the power source delivers sufficient output for your charger
The charger LED shows long orange blinks	The hearing aid or charger is too warm	Move the charger and hearing aid to a location with a temperature between +5°C to +40°C
The charger LED repeatedly shows 3 short orange blinks	The charger is too cold	Move the charger to a location with a temperature between +5°C to +40°C
	System error	Contact your hearing care professional

## Troubleshooting guide

Symptom	Possible causes	Solutions
<b>Hearing aid LED remains off when the hearing aid is placed in the charger</b>	The charger is not switched on	Verify that the charger power supply is connected correctly
	The hearing aid or charger is either too warm or too cold	Move the charger and hearing aid to a location with a temperature between +5 °C to +40 °C
	Charging is incomplete. The room temperature exceeds +35 °C, which prolongs the charging time. The charger has stopped charging to protect the battery	Reinsert the hearing aid into the charger. This will complete the charging within approximately 15 minutes
	The hearing aid is not correctly inserted into the charger	Check the charger slots for foreign objects
<b>The hearing aid LED blinks red/orange* when the hearing aid is placed in the charger</b>	System error	Contact your hearing care professional

\* depending on the hearing aid family, see hearing aid instruction for use

## Charger: Conditions of use

<b>Operational environment conditions</b>	Temperature: +5°C to +40°C Humidity: 5% to 93%, non-condensing Atmospheric pressure: 700 hPa to 1060 hPa
<b>Transportation and storage conditions</b>	Temperature and humidity shall not exceed the below limits for extended periods during transportation and storage:  Temperature: -25°C to +70°C Humidity: 5% to 93%, non-condensing

Information about hearing aid: Condition of use, see hearing aid Instruction for use.

The manufacturer declares that this charger is in compliance with the essential requirements and other relevant provisions of Directive EMC (2014/30/EU) and LVD (2014/35/EU).

Declaration of Conformity is available from the manufacturer.



SBO Hearing A/S  
Kongebakken 9  
DK-2765 Smørum  
Denmark  
[www.sbohearing.com](http://www.sbohearing.com)

**Australian sponsor**






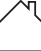
Oticon Australia a division of Audmet Australia  
Suite 4, Level 4, Building B  
11 Talavera Road  
North Ryde NSW 2113









Waste from electronic equipment must be handled according to local regulations.



### Description of symbols used in this booklet

	<b>Warnings</b> Text marked with a warning symbol must be read before using the device.
	<b>Manufacturer</b> The device is produced by the manufacturer whose name and address are stated next to the symbol. Indicates the medical device manufacturer, as defined in EU Directives 90/385/EEC, 93/42/EEC and 98/79/EC.
	<b>Electronic waste (WEEE)</b> Recycle hearing aids, accessories or batteries according to local regulations. Hearing aid users can also return electronic waste to their hearing care professional for disposal. Electronic equipment covered by Directive 2012/19/EU on waste and electrical equipment (WEEE).
	<b>Regulatory Compliance Mark (RCM)</b> The device complies with electrical safety, EMC and radio spectrum requirements for devices supplied to the Australian or New Zealand market.
	<b>Double insulation</b> Indicates that product power supply is double insulated. This means a very low risk of single fault failures i.e. single fault failures cannot occur.
	<b>Indoor use</b> Indicates that the product is qualified for indoor use.

### Description of symbols used on the regulatory packaging label

	<b>Keep dry</b> Indicates a medical device that needs to be protected from moisture.
	<b>Caution symbol</b> Consult instructions for use for warnings and cautions.
	<b>Catalogue number</b> Indicates the manufacturer's catalogue number so that the medical device can be identified.
	<b>Serial number</b> Indicates the manufacturer's serial number so that a specific medical device can be identified.
	<b>Medical Device</b> The device is a medical device.
	<b>Power supply outlet</b> Indicates the rate at which power is sent from the outlet to your electrical device.

## International warranty

Your charger is covered by an international limited warranty issued by the manufacturer for a period of 12 months from the date of delivery to you. This limited warranty covers manufacturing and material defects in the device itself, but not in accessories such as batteries, tubing, speakers, earpieces and filters, etc. Problems from improper or incorrect handling or care, excessive use, accidents, repairs made by an unauthorized party, exposure to corrosive conditions, physical changes in your ear, damage due to foreign objects entering the device, or incorrect

adjustments are NOT covered by the limited warranty and may void it. Under this warranty, the manufacturer will choose, in its sole discretion, whether to repair the hearing aid, or replace it with an equivalent model. The above warranty does not affect any legal rights that you might have under applicable national legislation governing sale of consumer goods. Your hearing care professional may have issued a warranty that goes beyond the clauses of this limited warranty. Please consult him/her for further information.

### **If you need service**

Take your charger to your hearing care professional, who may be able to sort out minor problems and adjustments immediately. Your hearing care professional can assist you to obtain warranty service from the manufacturer. Your hearing care professional may charge a fee for their services.

## Australia only

The rights given under this warranty are in addition to other rights and remedies under a law in relation to the good or services to which the warranty relates to. Our goods come with guarantees that cannot be excluded under the Australian Consumer Law. You are entitled to a replacement or refund for a major failure and compensation for any other reasonably foreseeable loss or damage. You are also entitled to have the goods repaired or replaced if the goods fail to be of acceptable quality and the failure does not amount to a major failure.

Australian customers should contact Oticon Australia at Suite 4, Level 4, Building B, 11 Talavera Road, North Ryde NSW 2113, telephone 1800 633 738 if you have any questions regarding this warranty.

215366AU / 2019.12.05

## Warranty

### Certificate

Name of owner: \_\_\_\_\_

Hearing care professional: \_\_\_\_\_

Hearing care professional's address: \_\_\_\_\_

Hearing care professional's phone: \_\_\_\_\_

Purchase date: \_\_\_\_\_

Model: \_\_\_\_\_ Serial no.: \_\_\_\_\_

215366AU / 2019.12.05



**oticon**  
life-changing technology